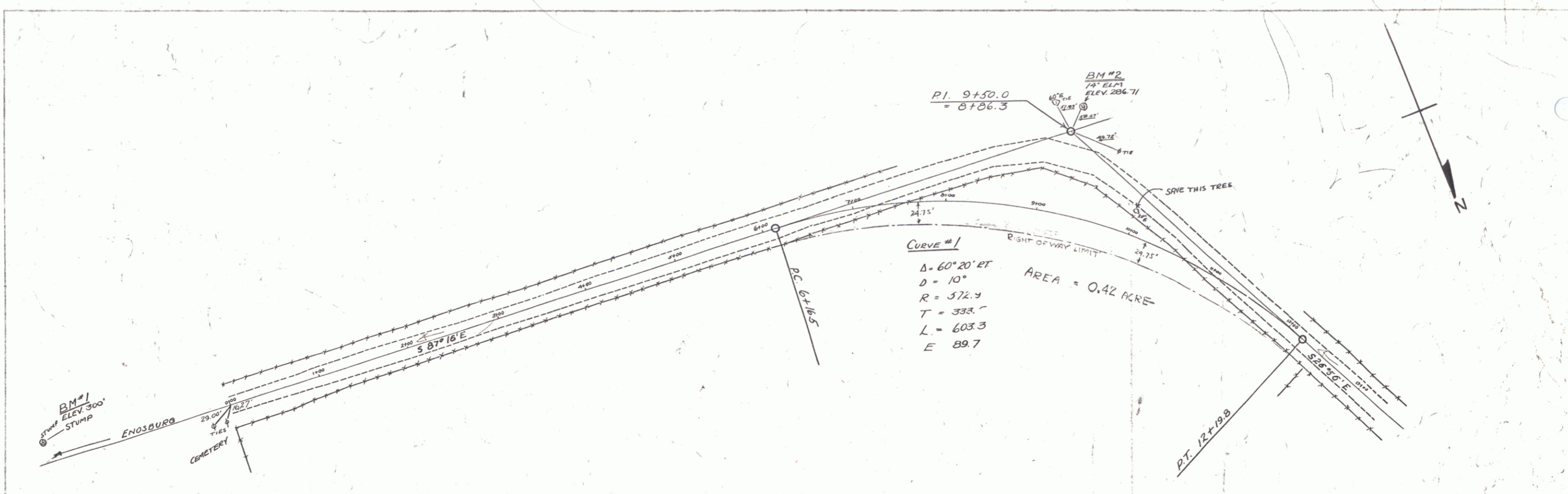


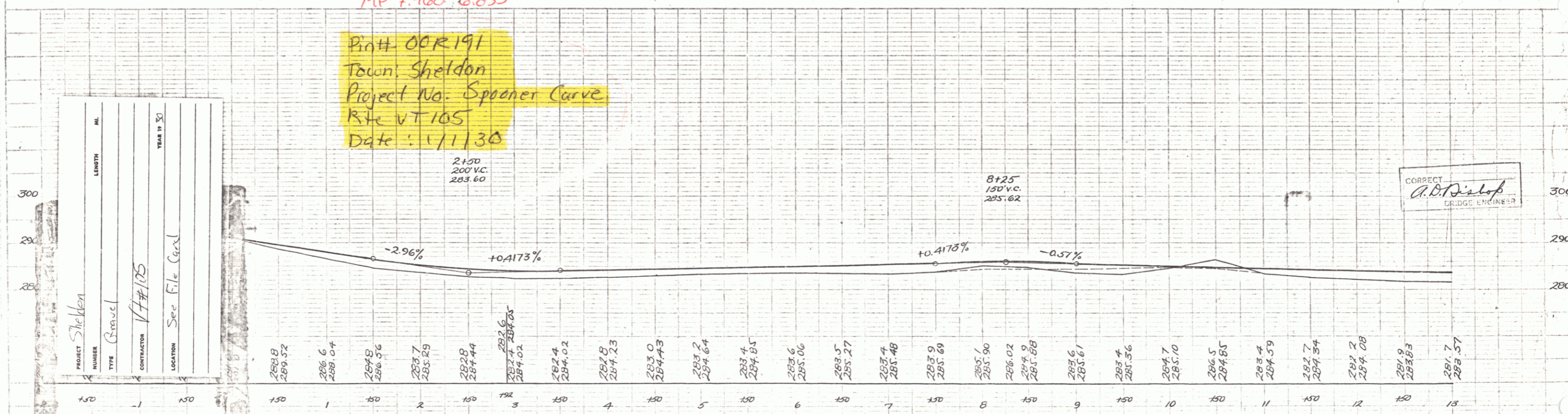
PLAN
 DATE 11/1/30
 SHEET NO. 6 OF 6
 PROJECT NO. 17#125
 CONTRACTOR
 LOCATION



MP 7.460-6.835

Pin# 00R191
 Town: Sheldon
 Project No. Spooner Curve
 Rte VT 105
 Date: 1/1/30

PROFILE
 DATE 11/1/30



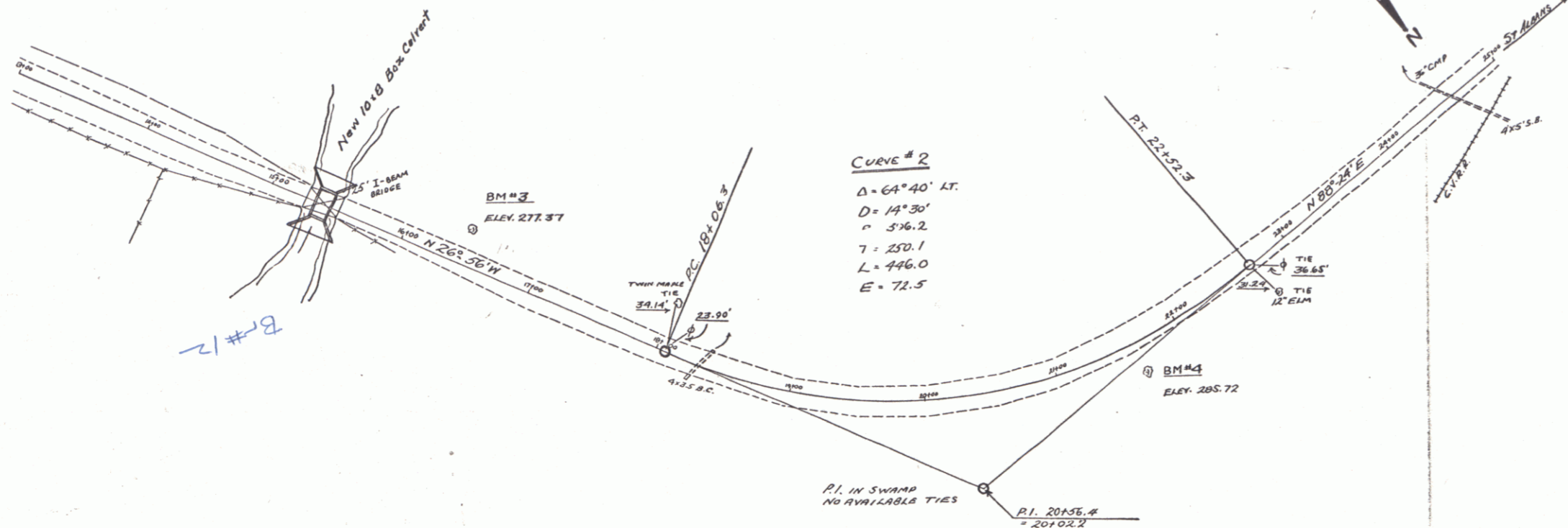
CORRECT
 A.B. Dialop
 BRIDGE ENGINEER

BM #1 STUMP 23' LEFT STATION ELEV. 300.0'
 BM #2 74" ELM. 25' LEFT STATION 25, ELEV. 286.71'

SCALE 1" = 50 FT.

TOWN OF SHELDON
 SPOONER CURVE
 NORTH SHELDON
 SHEET 6 OF 6

Cable Guard Rail Required
 Lt Sta 1517 to Sta 15181 32 lin ft
 Rt Sta 1517 to Sta 15181 32 lin ft
 Allowance for Anchors 80 lin ft
 Total 144 lin ft

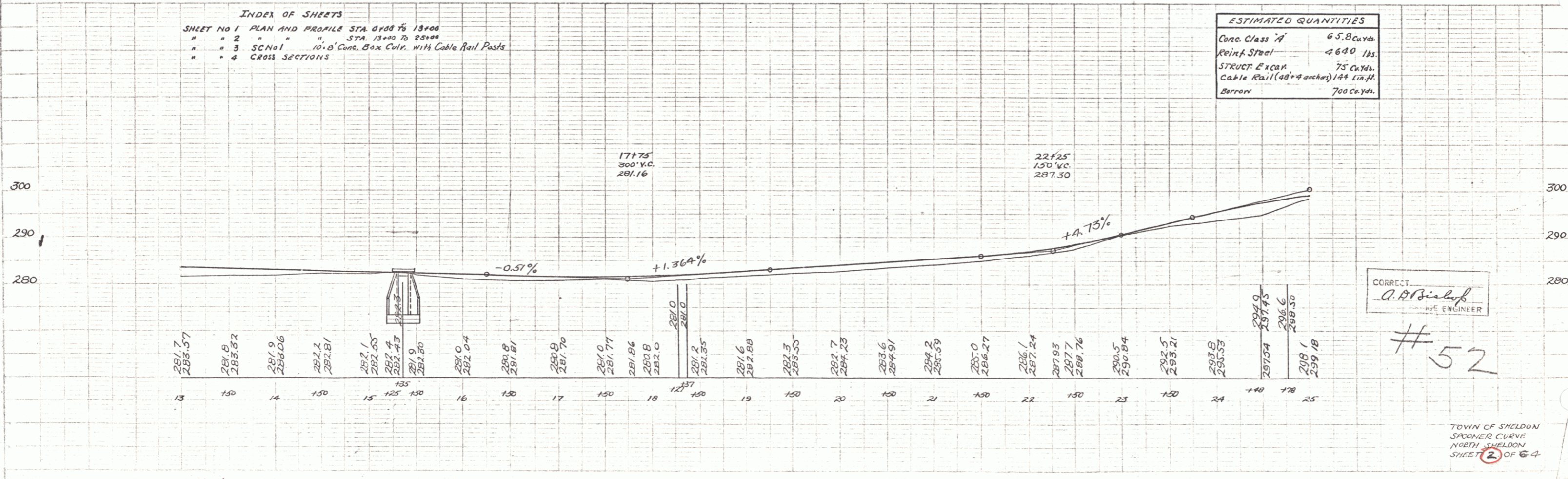


STEEL SCHEDULE				
BAR REQ'D	SIZE	LTN	DETAIL	
A	82	7/8"	13'-0"	
B	66	3/4"	9'-6"	STRAIGHT
C	48	1/2"	14'-3"	"
D	22	1/2"	12'-0"	
E		1/2"	12'-0" to 30'-0"	E Bars vary 12'-0" to 30'-0" in pairs. Pairs increase by 2'-0" lengths. One of each pair for each Apron. Bars to be marked E, 10 E10. Total Length 450 Lin Ft.
F		1/2"	5'-0" to 10'-0"	F Bars vary 5'-0" to 10'-0" in fours (one for each wing) each set increases by 3'-3". Mark F, 10 F5. Total Length 230 Lin Ft.
G		1/2"	5'-6" to 11'-6"	G Bars vary 5'-6" to 11'-6" in fours by 6" increas. per set. Mark G, 10 G13. Total Lth. 448 Lin Ft.
D ₁ to D ₇		1/2"	4'-6" to 10'-6"	D ₁ Bars Vary by fours from 4'-6" to 10'-6" for D ₇ Bars by 1'-0" increase per set.
E ₁₁	8	1/2"	16'-0"	Straight (in cutoff walls). Total Lth. 210 Lin Ft.

Total length 16400 bar 6'-6"
 Maximum length of bars to be 22'-0"
 Bars required longer than 22'-0" to be spliced
 40 diameters

INDEX OF SHEETS
 SHEET NO 1 PLAN AND PROFILE STA 0+00 TO 13+00
 " " 2 " " STA. 13+00 TO 25+00
 " " 3 SCN 1 10'-0" Conc. Box Cul. with Cable Rail Posts
 " " 4 CROSS SECTIONS

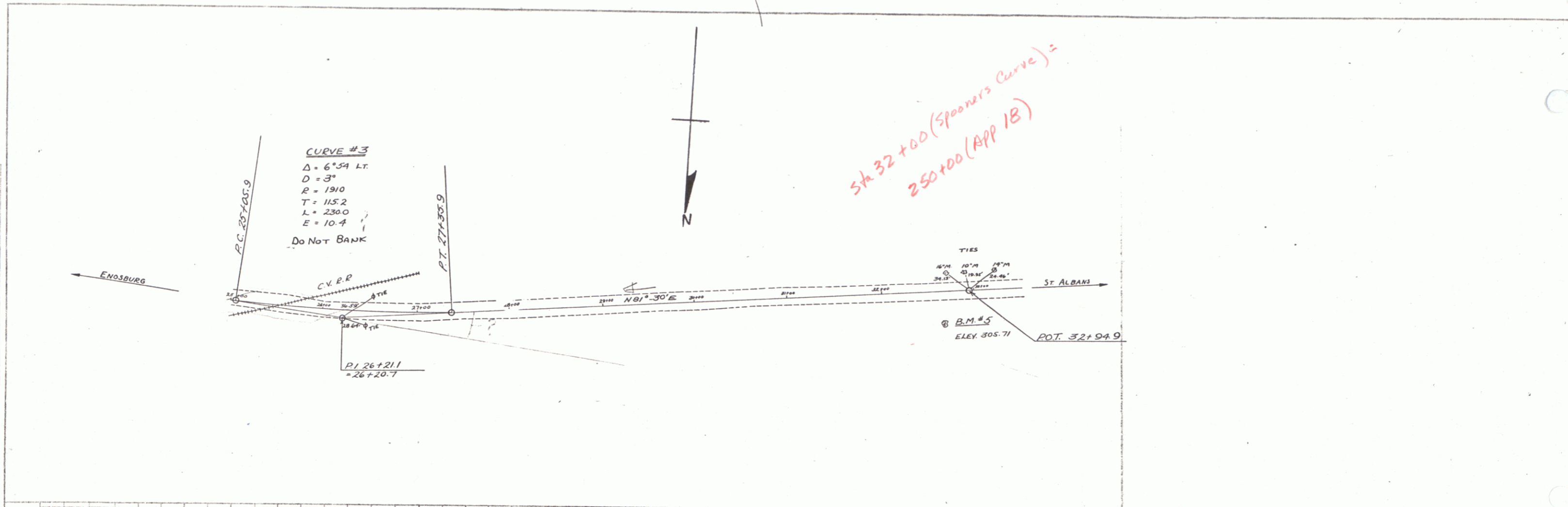
ESTIMATED QUANTITIES	
Conc. Class 4'	65.8 cu yds
Reinf. Steel	4630 lbs.
STRUCT. E' x can	75 cu yds.
Cable Rail (40' x anchors) 144 Lin Ft.	
Borrow	700 cu yds.



TOWN OF SHELDON
 SPOONER CURVE
 NORTH SHELDON
 SHEET 2 OF 4

PLAN
 DATE 3/23/00
 DRAWN BY [Signature]

BASE
 DATE 3/23/00
 DRAWN BY [Signature]



Sta 32+00 (Spooner's Curve) =
 250+00 (APP 1B)

