

INDEX OF SHEETS	
SHEET NO. 1	TITLE PAGE
2	TYPICAL CROSS-SECTION OF IMPROVEMENT { Grading, Base & Drainage, with Guard Rail, and Double Tack Coat of Refined Tar. Item 29.
3	BANKING AND WIDENING TABLES
4-18	PLAN AND PROFILE STA.
19	STANDARD STRUCTURE SHEET 5-28, PIPE CULVERTS.
20	" " " 5-30, CABLE GUARD RAIL, WOOD GUARD RAIL.
21	" " " 5-30A, STA. LIND., FRO. RID. PINS, SOUND. MERS.
22	" " " 5-40, BARRIERS, SIGNS, & LIGHTS.
23	" " " 5-41, ROUNDING TOPS OF CUT SLOPES.
24	" " " SCM 2-3, WINGS FOR 3'x3' RC. BOX.
25	" " " S.C. 2-4, BARRELS FOR 3'x3' & 4'x5' RC. BOX.
26	DETAILS OF WINGS FOR 4'x5' RC. BOX.
27-10	CROSS SECTION SHEETS.

STANDARD STRUCTURE SHEETS APPROVED  
BY THE CHIEF ENGINEER:  
5-28 JULY 11, 1933.  
5-30 AUG. 15, 1934.

(To Be Returned to R.O.W. Division)  
Town of Bloomfield  
Perpetual  
Right-of-Way Division  
M.O.M.F.I.E.

STATE OF VERMONT  
STATE HIGHWAY DEPARTMENT

PLAN AND PROFILE OF PROPOSED  
STATE HIGHWAY

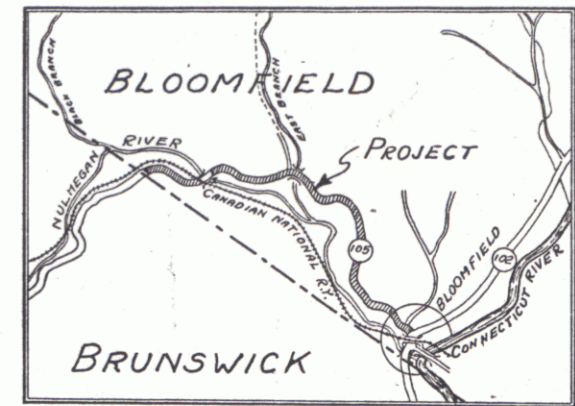
FEDERAL AID PROJECT

TOWN OF BLOOMFIELD

BLOOMFIELD-ISLAND POND ROAD Route VT 105

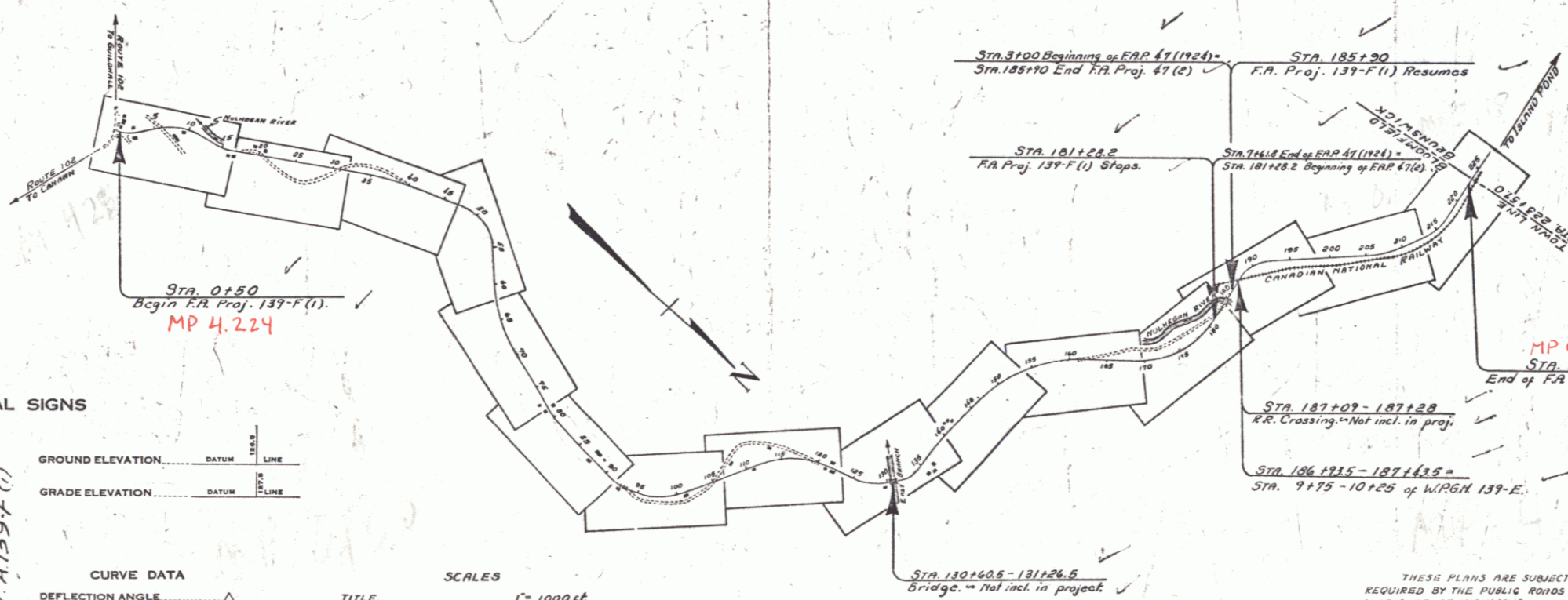
BEGINNING AT THE INTERSECTION OF ROUTE 102  
AND 105 IN BLOOMFIELD VILLAGE AND EXTENDING  
NORTHWESTERLY ON ROUTE 105 4.213 MILES.  
LENGTH OF PROJECT 21,697.4 FT. = 4.109 MI.

FED. ROAD DIST. NO.	STATE	FED. AID PROJ. NO.	FISCAL YEAR	SHEET NO.	TOTAL SHEETS
9	VT.	139-F(1)	1941	1	119



SCALE: 1" = 1 MILE

RECORD PLANS  
By AC Birnie 6/5/42



CONVENTIONAL SIGNS

GROUND ELEVATION.....	DATUM	LINE
GRADE ELEVATION.....	DATUM	LINE

CURVE DATA

DEFLECTION ANGLE.....	Δ
DEGREE OF CURVE.....	D
RADIUS OF CURVE.....	R
TANGENT DISTANCE.....	T
LENGTH OF CURVE.....	L
EXTERNAL DISTANCE.....	E
POINT OF INTERSECTION.....	P. I.
POINT OF CURVE.....	P. C.
POINT OF TANGENT.....	P. T.
POINT ON TANGENT.....	P. O. T.

SCALES

TITLE.....	1" = 1000 ft.
TYPICAL.....	1" = 2 ft.
PLAN.....	1" = 50 ft.
PROFILE HORIZONTAL.....	1" = 10 ft.
PROFILE VERTICAL.....	1" = 30 ft.
CROSS SECTIONS.....	1" = 5 ft.

THESE PLANS ARE SUBJECT TO SUCH REVISIONS AS MAY BE REQUIRED BY THE PUBLIC ROADS ADMINISTRATION OR THE COMMISSIONER OF HIGHWAYS.

CONSTRUCTION IS TO BE CARRIED ON IN ACCORDANCE WITH THE PLANS AND THE STANDARD ROAD AND BRIDGE SPECIFICATIONS OF 1936, AS APPROVED DECEMBER 28TH, 1936, BY THE PUBLIC ROADS ADMINISTRATION, INCLUDING ALL SUBSEQUENT APPROVED REVISIONS AND SUCH REVISED SPECIFICATIONS AND SPECIAL PROVISIONS AS ARE SUBMITTED WITH THE PLANS.

APPROVED: *Nov. 21, 1940*  
*H.S. Langford*  
COMMISSIONER OF HIGHWAYS

SUBMITTED BY ORDER OF THE STATE HIGHWAY BOARD

RECOMMENDED FOR APPROVAL

DISTRICT ENGINEER  
PUBLIC ROADS ADMINISTRATION  
FEDERAL WORKS AGENCY

APPROVED

DISTRICT ENGINEER  
PUBLIC ROADS ADMINISTRATION  
FEDERAL WORKS AGENCY

APPROVED: <i>Nov. 31, 1940</i> <i>E. J. [Signature]</i> ROAD ENGINEER	APPROVED: <i>Nov. 21, 1940</i> <i>[Signature]</i> DISTRICT HIGHWAY COMMISSIONER	SERIES: F.A.P. No. 139-F(1) FILED SHEET 1 OF 119
---	---	---

DIST. # 9 PLANS