

INDEX OF SHEETS

SHEET NO.	TITLE PAGE
1	TITLE PAGE
2	PLAN & PROFILE OF IMPROVEMENT
3	AUTOMATIC FLASH SIGNAL (D80.12-19.1)
4	WIRING CIRCUIT FOR AUTOMATIC FLASH SIGNAL (Plan #303313-1)

FED. ROAD DIST. NO.	STATE	U.S. H. PROJ. NO.	STATE	TOTAL SHEETS	TOTAL SHEETS
D	VT.	139-E	1937	4	4

STATE OF VERMONT
STATE HIGHWAY DEPARTMENT

PLAN AND PROFILE OF PROPOSED
STATE HIGHWAY
U.S. WORKS PROGRAM GRADE CROSSING PROJECT

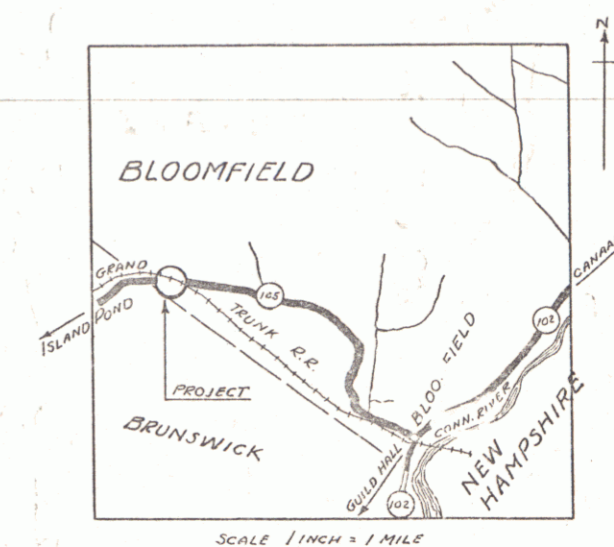
TOWN OF BLOOMFIELD Pin# 06R187

AUTOMATIC FLASH SIGNAL ON ROUTE VT. 105 AT THE
CROSSING OF CANADIAN NATIONAL RAILWAYS BETWEEN
ISLAND POND AND BLOOMFIELD AT STONE DAM.

MILAGE STATION 192+38.

Begin Project STA 9+75 MP 0.693
End Project STA 10+25 MP 0.683

LENGTH OF PROJECT 50.0 FEET = 0.009 MILES



APPROVED: 9th December 1936
A.C.H. CHIEF ENGINEER CANADIAN NATIONAL RAILWAYS.

APPROVED: [Signature] 18/12/37
COMMISSIONER OF HIGHWAYS

RIGHT-OF-WAY DIVISION
TOWN FILE

PERPETUAL
Town of VT 105
(To Be Returned To R.O.W. Division)

RECOMMENDED
DISTRICT ENGINEER BUREAU OF PUBLIC ROADS
RECOMMENDED FOR APPROVAL
CHIEF ENGINEER BUREAU OF PUBLIC ROADS
APPROVED
DIRECTOR BUREAU OF PUBLIC ROADS

SERIES NO. 139-E FILED
SHEET 1 OF 4

THESE PLANS ARE SUBJECT TO REVISIONS AS MAY BE REQUIRED BY THE BUREAU OF PUBLIC ROADS AND COMMISSIONER OF HIGHWAYS. CONSTRUCTION IS TO BE CARRIED ON IN ACCORDANCE WITH THE PLANS AND SPECIFICATIONS OF THE ASSOCIATION OF AMERICAN RAILROADS, WHICH APPLY TO THIS WORK.

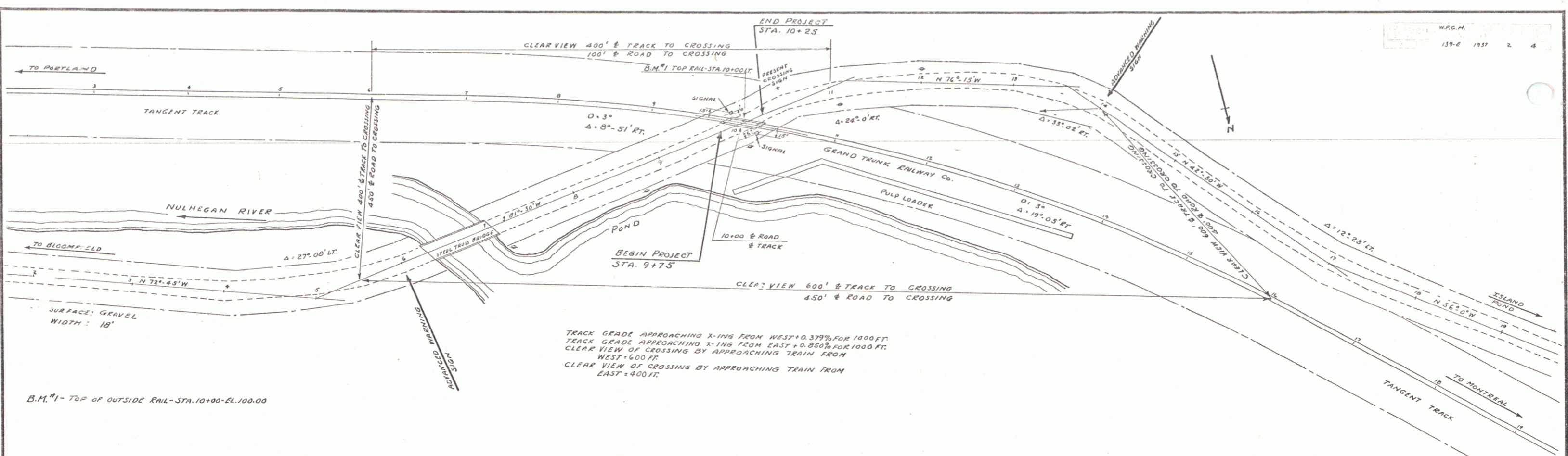
SCALES

PLAN	1" = 50 FEET
PROFILE	HORI. 1" = 50' VERT. 1" = 10'

CONVENTIONAL SIGNS

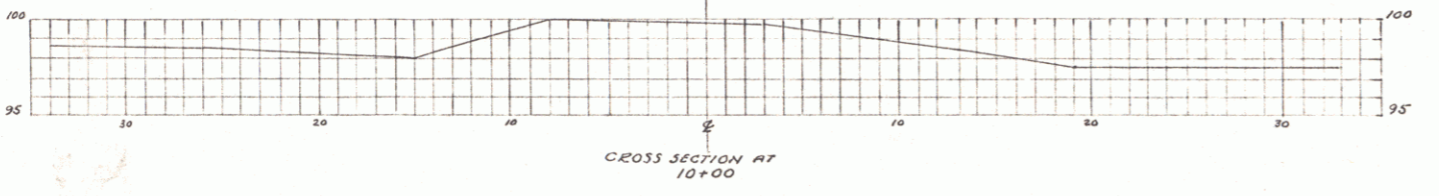
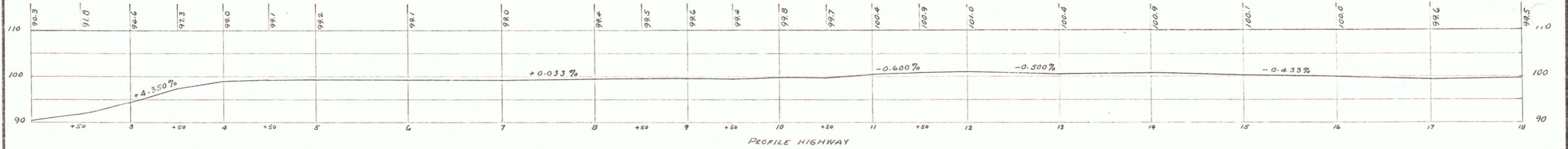
GROUND ELEVATION	BATHY LINE
GRADE ELEVATION	BATHY LINE
CURVE DATA	DEFLECTION ANGLE Δ
	DEGREE OF CURVE D
	RADIUS OF CURVE R
	TANGENT DISTANCE T
	LENGTH OF CURVE L
	EXTERNAL DISTANCE E
	POINT OF INTERSECTION P. I.
	POINT OF CURVE P. C.
	POINT OF TANGENT P. T.
	POINT ON TANGENT P. O. T.

NAME: [Blank]
LENGTH: [Blank] FEET
DATE: [Blank]
CONTRACTOR: [Blank]
LOCATION: On Route Vt. 105 at the crossing of Canadian National Railway between Island Pond and Bloomfield at Stone Dam.



TRACK GRADE APPROACHING X-ING FROM WEST +0.37% FOR 1000 FT.
 TRACK GRADE APPROACHING X-ING FROM EAST +0.85% FOR 1000 FT.
 CLEAR VIEW OF CROSSING BY APPROACHING TRAIN FROM WEST = 600 FT.
 CLEAR VIEW OF CROSSING BY APPROACHING TRAIN FROM EAST = 450 FT.

B.M. #1 - TOP OF OUTSIDE RAIL - STA. 10+00 - EL. 100.00



AUTOMATIC FLASH SIGNAL
 GRADE CROSSING AT STONE DAM
 OVER
 GRAND TRUNK RAILWAY CO.
 OPERATED BY THE
 CANADIAN NATIONAL RAILWAYS
 VT. W.R.G.H. 139-E - BLOOMFIELD, VT.
 ROUTE VT. 105 - STA. 10+00

ADVANCED WARNING SIGNS WILL BE ERRECTED, IF THEY ARE NOT ALREADY IN PLACE, IN ACCORDANCE WITH "MANUAL ON UNIFORM TRAFFIC CONTROL DEVICES ON STREETS AND HIGHWAYS, (1936)

ESTIMATED QUANTITIES	
REQUIRED: 2 SIGNALS WITH WIRING & WARNING SIGNS.	Surveyed by G.W. LANE Designed by Drawn by Traced by A.W.P. Checked by Series W.R.G.H. No. 139-E Sheet 2 of 4