

INDEX OF SHEETS	
SHEET NO.	TITLE PAGE
1	TITLE PAGE
2	TYPICAL CROSS-SECTION OF IMPROVEMENT { 2 1/2" GRAVEL MIXED-IN-PLACE SURFACE COURSE WITH REFINED TAR - ITEMS 24 B & 24 H
3	BANKING AND WIDENING TABLES
4-6	PLAN AND PROFILE STA.
7	STANDARD SHEET 540, BARRICADES-SIGNS & LIGHTS
7A	5 50, GUARD RAIL
8-12	CROSS SECTIONS

STANDARD SHEET 5-30 APPROVED BY THE CHIEF ENGINEER ON AUG. 15, 1935.

STATE OF VERMONT
STATE HIGHWAY DEPARTMENT

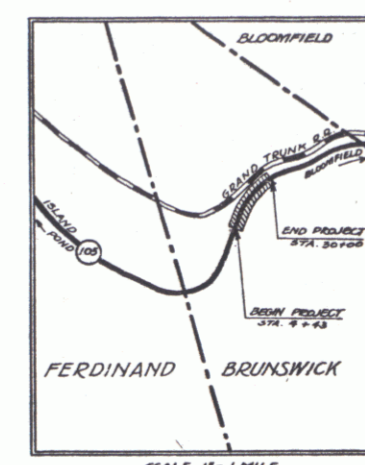
PLAN AND PROFILE OF PROPOSED
STATE HIGHWAY
FEDERAL AID PROJECT

TOWN OF BRUNSWICK Pin#00R184

ISLAND POND-BLOOMFIELD ROAD

FROM A POINT 0.794 MILES NORTHEASTERLY FROM FERDINAND
BRUNSWICK TOWN LINE NORTHEASTERLY 0.484 MILES
LENGTH OF PROJECT = 2557.0 FEET = 0.484 MILES

FED. ROAD DIST. NO.	STATE	FED. AID PROJ. NO.	FISCAL YEAR	SHEET NO.	TOTAL SHEETS
9	VT.	159-C	1936	1	12

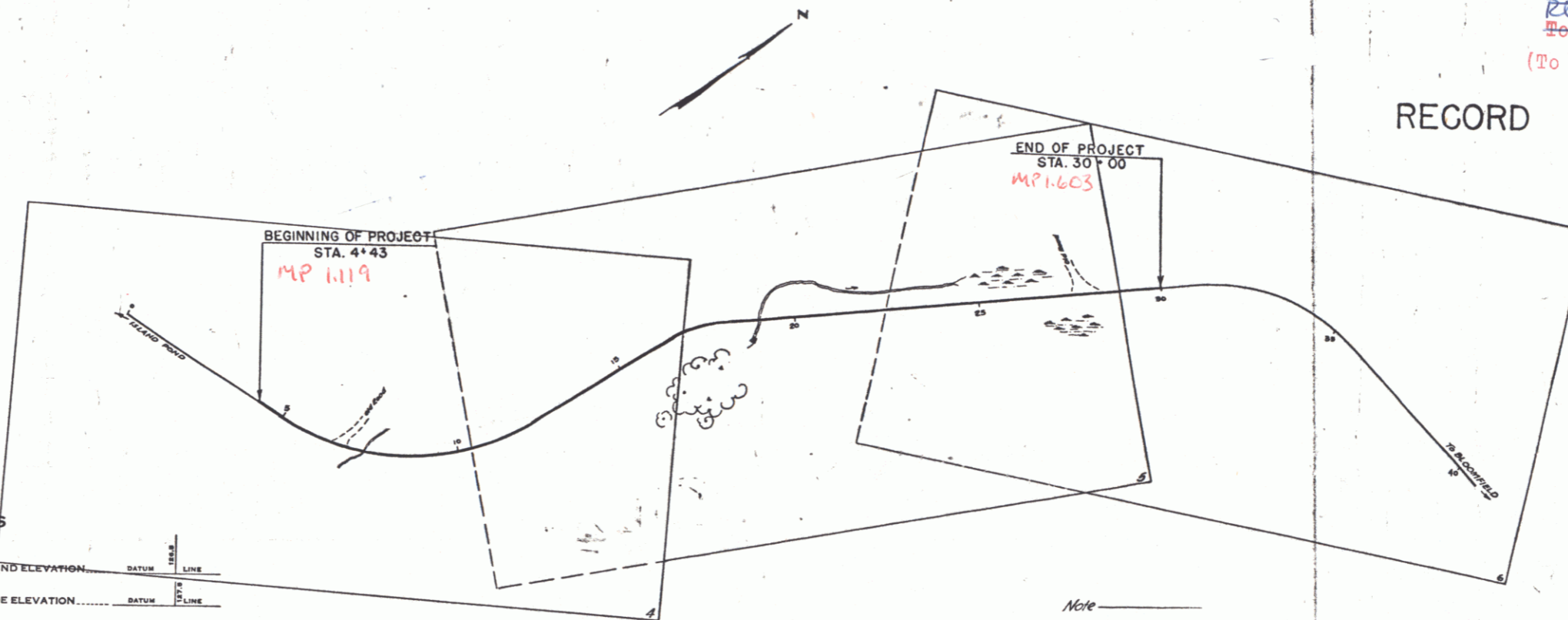


SCALE 1" = 1 MILE

RIGHT-OF-WAY DIVISION
TOWN FILE
PERPETUAL

Town of BRUNSWICK
(To Be Returned To R.O.W. Division)

RECORD PLANS



CONVENTIONAL SIGNS

COUNTY LINE	---
TOWN LINE	---
FENCE LINE	---
STONE WALL	---
UNFENCED PROPERTY	---
GUARD RAIL	---
TRAVELED WAY	---
RAILROAD	---
RETAINING WALL	---
CENTER LINE	---
SURVEY LINE	---
CULVERT	---
DROP INLET	---
TROLLEY POLE	---
POWER POLE	---
TELEPHONE POLE	---
TREES	---
HEDGE	---

GROUND ELEVATION	DATUM	LINE
---	---	---
GRADE ELEVATION	DATUM	LINE
---	---	---

CURVE DATA

DEFLECTION ANGLE	Δ
DEGREE OF CURVE	D
RADIUS OF CURVE	R
TANGENT DISTANCE	T
LENGTH OF CURVE	L
EXTERNAL DISTANCE	E
POINT OF INTERSECTION	P. I.
POINT OF CURVE	P. C.
POINT OF TANGENT	P. T.
POINT ON TANGENT	P. O. T.

SCALE

TITLE	1" = 200'
PLAN	1" = 50'
PROFILE	1" = 10'
CROSS-SECTION	1" = 5'

Note
These plans are subject to such revisions as may be required by the Bureau of Public Roads and the Commissioner of Highways.
Construction is to be carried on in accordance with the plans and Standard Road and Bridge Specifications of 1930 including all subsequent approved revisions and such revised specifications and special provisions as are submitted with the plans.
Attention of Contractors is called to the fact that the State Highway Board reserves the right to extend this project northerly at the same contract prices. Said cost of extension not to exceed 25% of the amount of the contract.

APPROVED: July 8, 1935
H. W. Wagoner
COMMISSIONER OF HIGHWAYS

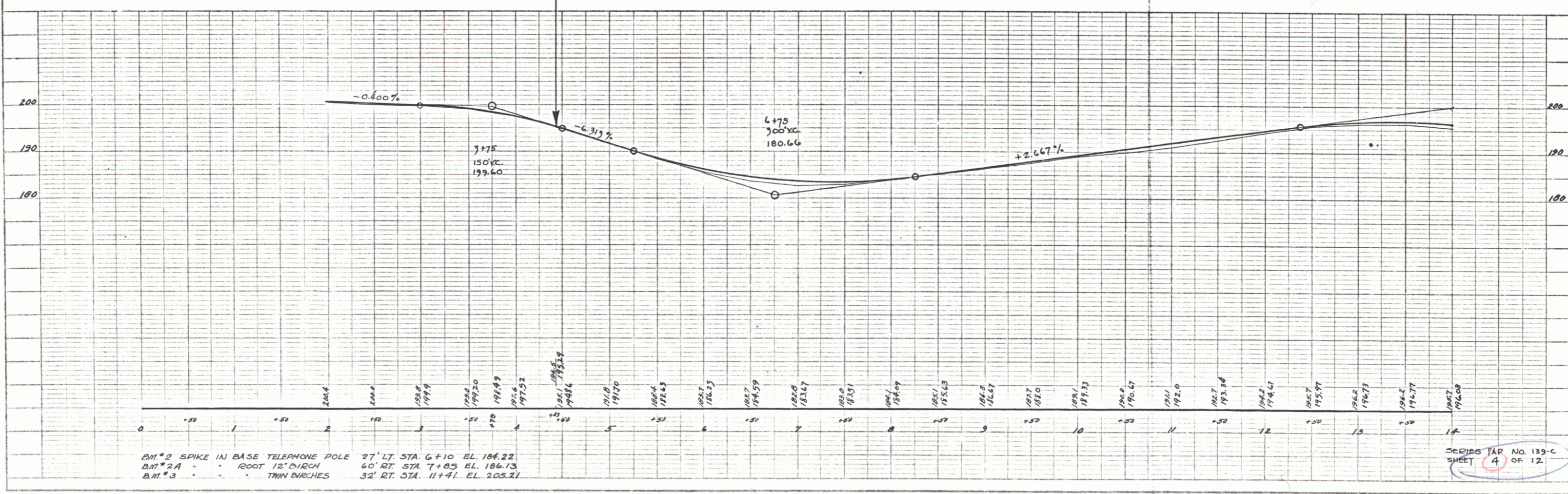
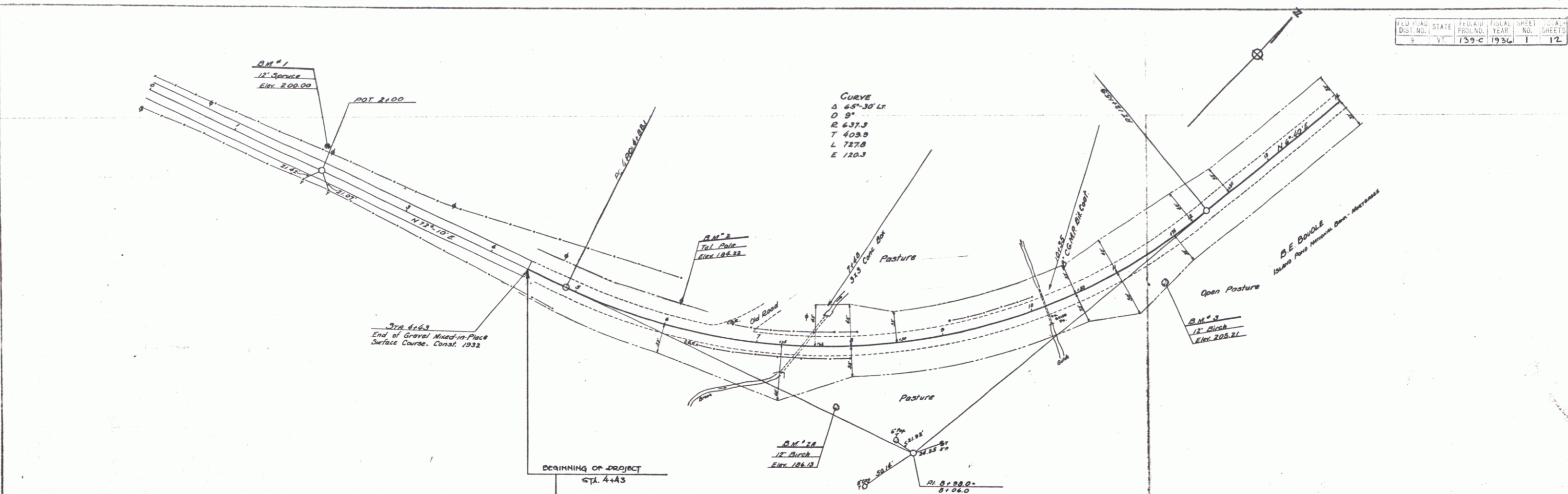
SUBMITTED BY ORDER OF THE STATE HIGHWAY BOARD

NOTE: ANY FURTHER INFORMATION CONCERNING THIS PROJECT, INCLUDING QUANTITIES, SHOULD BE REFERRED TO THE FIELD ENGINEER IN CHARGE OF THE PROJECT.

RECOMMENDED _____
DISTRICT ENGINEER BUREAU OF PUBLIC ROADS
RECOMMENDED FOR APPROVAL _____
CHIEF ENGINEER BUREAU OF PUBLIC ROADS
APPROVED _____
DIRECTOR - BUREAU OF PUBLIC ROADS

CORRECTED July 8, 1935
W. H. Wagoner
ROAD ENGINEER

SERIES FAP NO. 159-C FILED
SHEET 1 OF 12

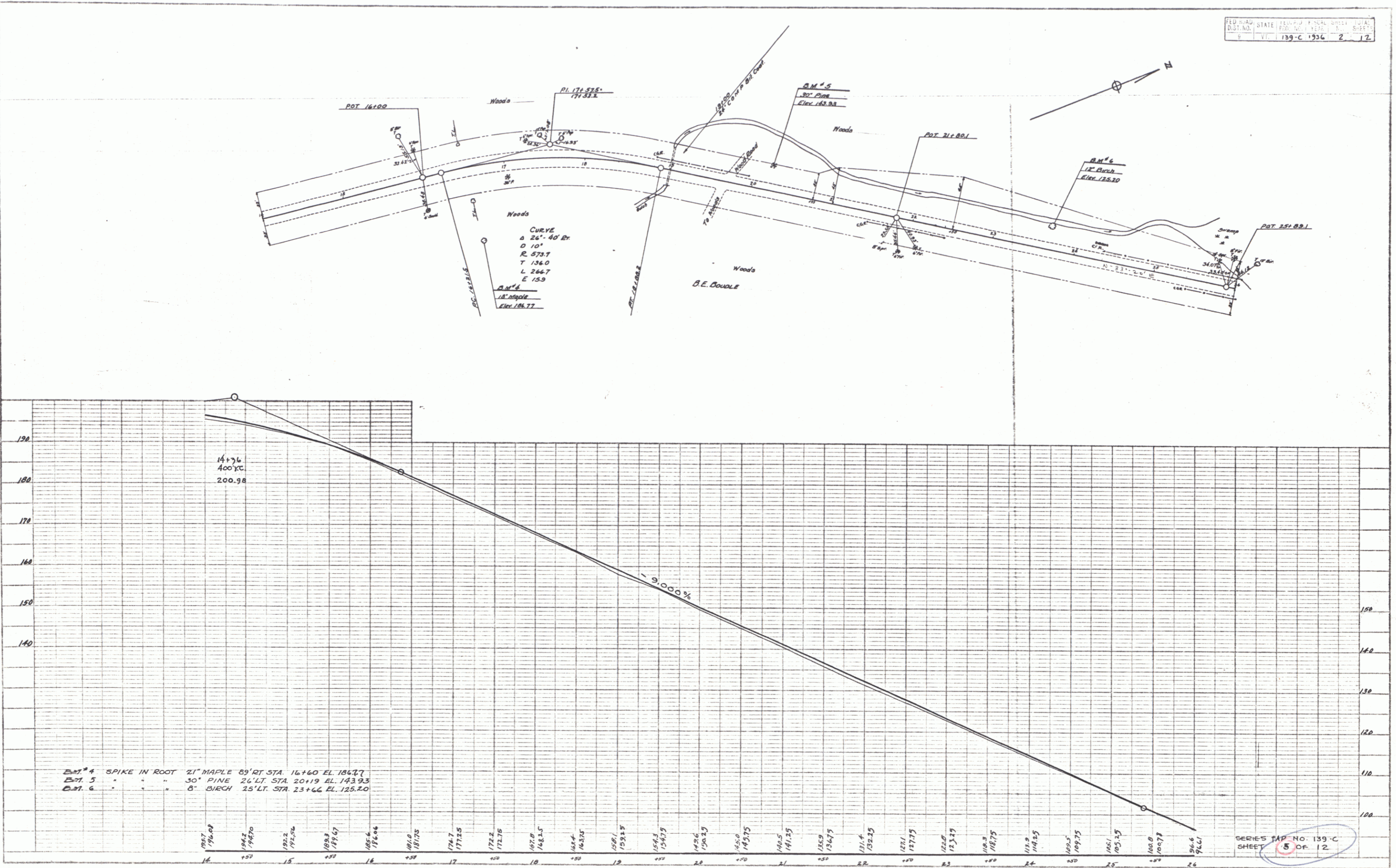


PLAN
 REVISIONS
 DATE
 BY
 CHECKED
 NO. OF SHEETS
 TOTAL SHEETS

PROFILE
 DATE
 BY
 CHECKED
 NO. OF SHEETS
 TOTAL SHEETS

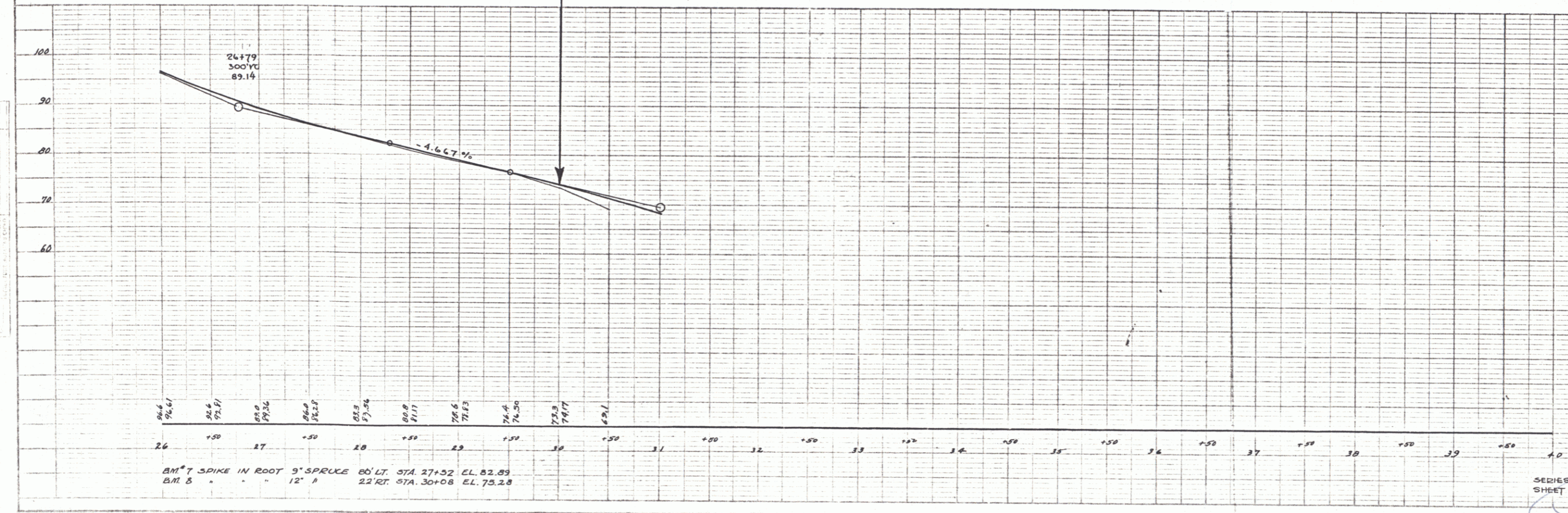
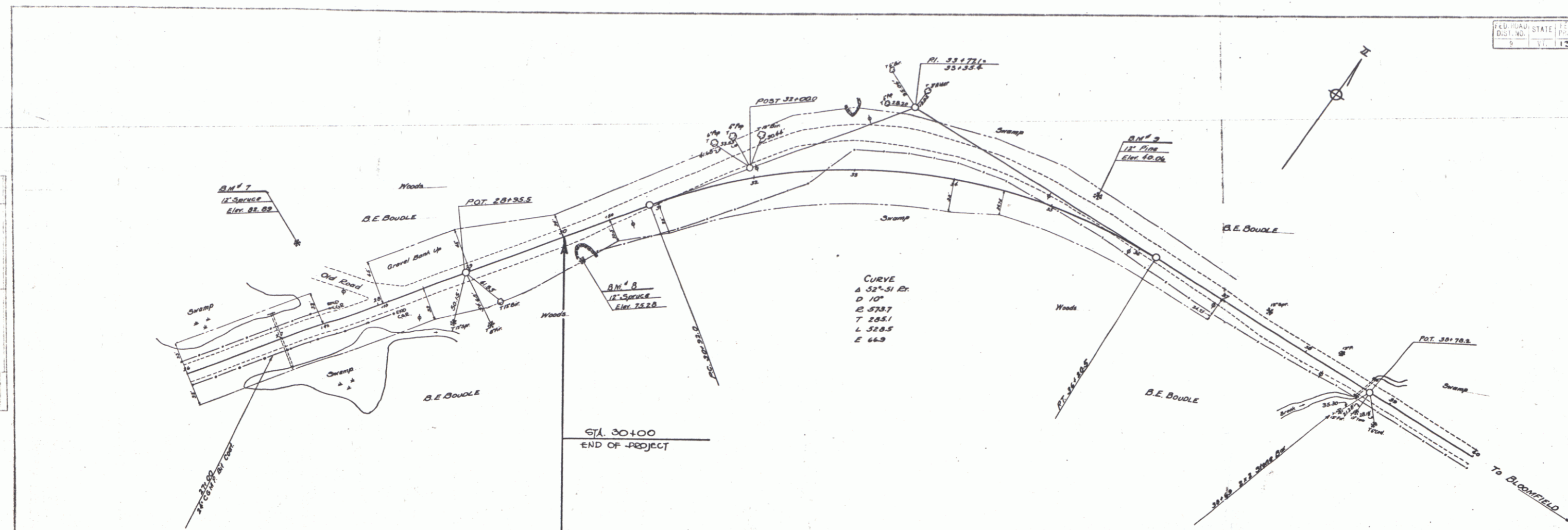
B.M. 2 SPIKE IN BASE TELEPHONE POLE 27' LT. STA. 6+10 EL. 184.22
 B.M. 2A - ROOT 12' BIRCH 60' RT. STA. 7+05 EL. 186.13
 B.M. 3 - THIN BIRCHES 32' RT. STA. 11+41 EL. 205.21

SERIES MAP No. 135-C
 SHEET 4 OF 12



PLAN
 SERIES
 SHEET NO.
 SHEET TOTAL

PROFILE
 SERIES
 SHEET NO.
 SHEET TOTAL



BM 7 SPIKE IN ROOT 9" SPRUCE 80' LT. STA 27+52 EL. 82.83
 BM 8 " " " 12" P 22' RT STA 30+08 EL. 75.28