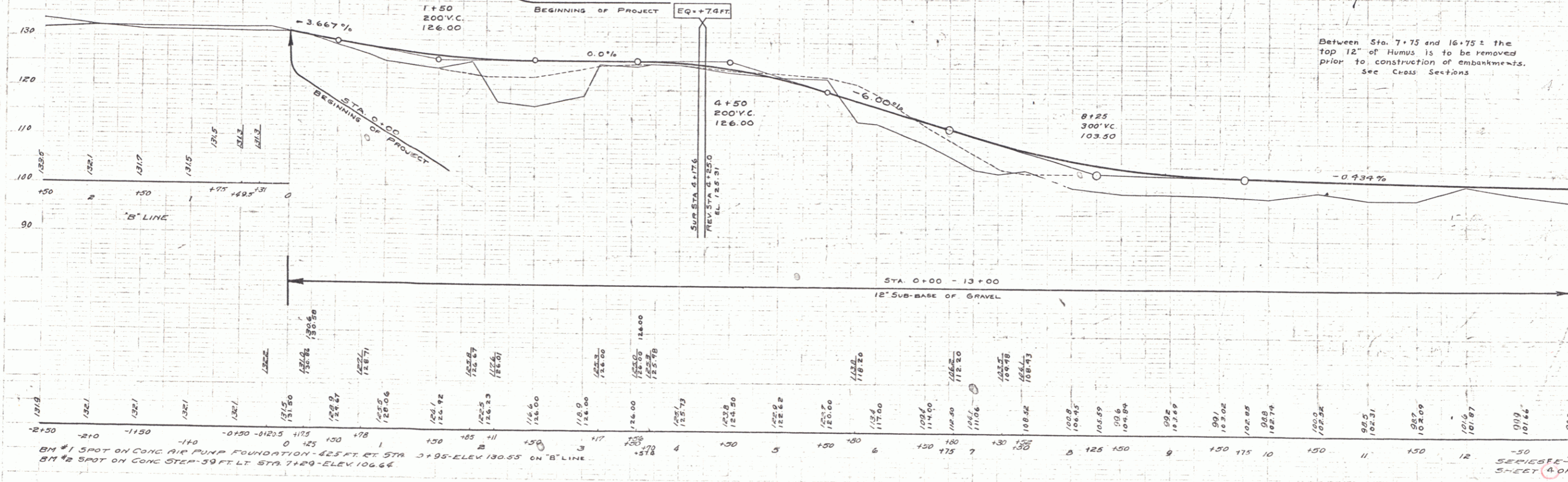
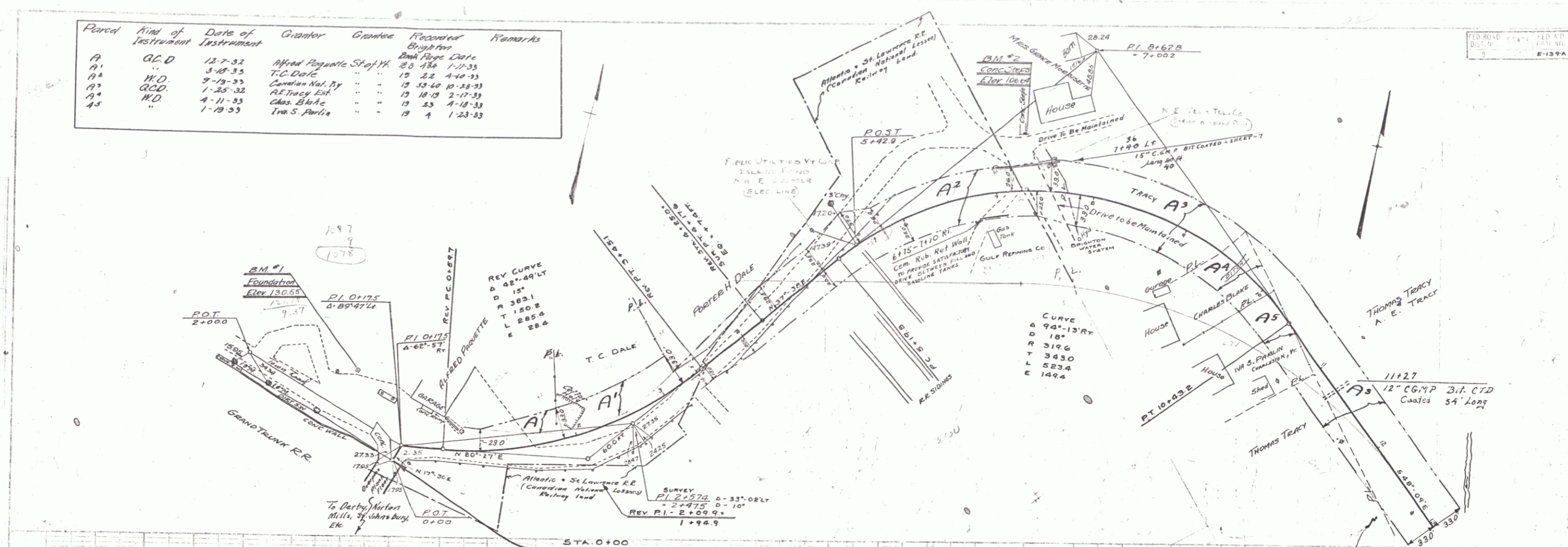


Parcel	Kind of Instrument	Date of Instrument	Grantor	Grantee	Recorded Book Page	Remarks
A	G.C.D.	12-7-32	Alfred Roquette Strat. W.	"	23 184	1-19-33
A1	"	3-18-33	T.C. Dale	"	19 22	4-10-33
A2	W.D.	9-19-33	Camden Nat. Ry	"	19 33-60	10-28-33
A3	G.C.D.	1-25-33	A.E. Tracy Est.	"	19 18-19	2-17-33
A4	W.D.	4-11-33	Chas. Strick	"	19 23	4-18-33
A5	"	1-19-33	Ira S. Parlin	"	19 4	1-23-33

FED. ROAD DIST. NO. 1000
 E-139A 1932 4-14



Between Sta. 7+75 and 16+75 the top 12" of Humus is to be removed prior to construction of embankments. See Cross Sections.

BM #1 SPOT ON CONC. AIR PUMP FOUNDATION - 425 FT. ET STA. 3+95 - ELEV. 130.55 ON 'B' LINE
 BM #2 SPOT ON CONC. STEM - 39 FT. LT. STA. 7+20 - ELEV. 106.66

SEE SHEETS 130-A, 130-B, 130-C, 130-D, 130-E, 130-F, 130-G, 130-H, 130-I, 130-J, 130-K, 130-L, 130-M, 130-N, 130-O, 130-P, 130-Q, 130-R, 130-S, 130-T, 130-U, 130-V, 130-W, 130-X, 130-Y, 130-Z