

INDEX OF SHEETS

1. Title Page
2. Typical Sheet
3. Summary of Quantities (Rigid Frame)
4. Item Detail and Drainage Sheet
5. Earthwork and Grade Sheet (Rigid Frame)
6. R.F. Detail Sheets
7. Plan Sheets (20 Scale) (Rigid Frame)
8. Profile Sheet
9. Plan Sheets (50 Scale) (Rigid Frame)
10. Profile Sheet
11. Profile Sheet
- 12-14. Plan Sheets (50 Scale) (Rigid Frame)
15. Profile Sheet
- 16-17. Landscaping Sheets
18. Traffic Relocation During Construction

STANDARDS

- | | |
|---|----------|
| 19. A-6-1 Slopes in Solid Rock Excavation | 12/ 8/72 |
| 20. B-1 Banking Tables | 12/ 8/72 |
| 21. B-2 Embankment on Earth Slope | 12/ 8/72 |
| 22. C-1 Curbs | 12/ 8/72 |
| 23. C-2a Portland Cement Concrete Sidewalk | 12/14/72 |
| 24. C-2b Headwalls, Underdrain & Carrier Pipe Construction Details | 3/ 8/72 |
| 25. C-4 Metal End Sections | 7/15/72 |
| 26. D-1E Precast Reinf. Conc. Curb Drop Inlet w/ Cast Iron Grate | 12/ 8/72 |
| 27. E-1 Fld. Aid Const. Ident. Signs | 12/14/72 |
| 28. E-2 Road Const. Approach Signs | 12/14/72 |
| 29. E-3 Bridge Const. Approach Signs | 12/14/72 |
| 30. E-4 On-Project Const. Signs | 12/14/72 |
| 31. G-1 Anchor for St. Beam Guard Rail w/ St. or Wood Posts at Openings | 4/ 1/72 |
| 32. G-2a Guard Rail, Std. St. Beam w/ St. Posts, Type I | 12/ 8/72 |
| 33. G-2b Steel Marker Posts | 12/ 8/72 |
| 34. G-2a Approach Railing (2 Rail Aluminum) in Transition w/ Guard Rail, Std. St. Beam w/ St. Posts, Type I and Type II | 12/ 8/72 |
| 35. J-1 Erection of Project Markers | 12/ 8/72 |
| 36. J-2 Std. Conc. Steps - Metal Hand Railing | 12/14/72 |
| 37. T-1 Temporary Erosion Control Details | 7/ 5/72 |
| 38. T-2 Temporary Erosion Control Details | 7/ 5/72 |
| 39. SS-1-71 Sht. 1 Alum. Bridge Railing Details | 8/24/72 |
| 40. SS-1-71 Sht. 2 Alum. Bridge Railing Details | 8/24/72 |
| 41. SCB-21-71 General Notes | 1/24/72 |
| 42. SCB-26-71 Details of W Beam Bridges | 5/15/72 |

BRIDGE SHEETS (RIGID FRAME)

- | |
|---|
| 43. BR 101 Preliminary Information Sheets |
| 44. BR 102 Quantity Sheet and Approach Slab Details |
| 45. BR 103 Tiring Log |
| 46. BR 104 Top Slab & Typical Rigid Frame Section |
| 47. BR 105 Abutment No. 1 |
| 48. BR 106 Abutment No. 2 |
| 49-49a. BR 107 & 108 Reinforcing Schedule |
| 50-57. Cross Sections (Mainline) |
| 58. Cross Sections (South Street) |
| 59-62. Cross Sections (Frontage Road) |
| 63. Cross Sections (Sideline Vic. of Lake Street) |
| 64. Cross Sections (R.R. Traverse) (Stairway) |

SHEETS FOR SUPER SPAN DESIGN

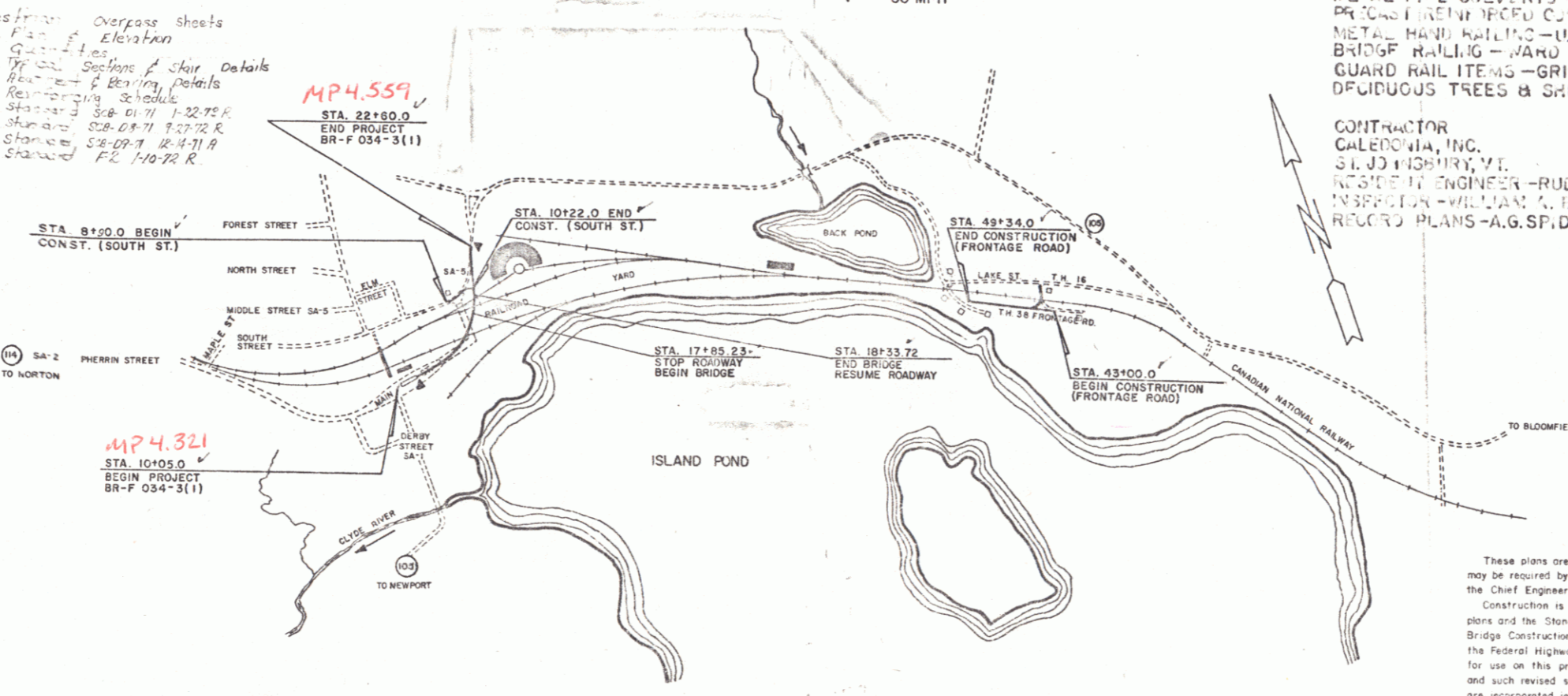
- | |
|--|
| 65. Summary of Quantities |
| 66. Earthwork and Grade Sheet |
| 67-69. Plan Sheets (20 Scale) |
| 70. Profile Sheet |
| 71. BR 201 Preliminary Information Sheet |
| 72. BR 202 Boring Log |
| 73. BR 203 Super Span Arch Details |
| 74. BR 204 Super Span Footing Details and Quantities |
| 75. BR 205 Reinforcing Schedule |
| 76-83. Cross Sections (Mainline) |
| 84. Cross Sections (South Street) |

NOTE: SHEETS APPLY TO BOTH RIGID FRAME AND SUPER SPAN DESIGN UNLESS MARKED OTHERWISE.

CONVENTIONAL SIGNS

- COUNTY LINE
- TOWN LINE
- L.V.'S OF ACCESS
- POINT OF ACCESS
- STONE WALL
- RAILROAD
- RAILROAD
- SURVEY LINE
- SURVEY LINE
- POWER POLE
- TELEPHONE POLE
- TREES
- FA CONST. IDENTIFICATION SIGNS
- PROPERTY LINE
- ROW TAKING LINE
- SLOPE RIGHTS
- TOP OF CUT
- TOE OF SLOPE

Adoption Overpass sheets
 101 Plan & Elevation
 102 Quantity Sheet
 103 Typical Sections & Slab Details
 104 Reinforcing Schedule
 105 Reinforcing Schedule
 106 Standard Section 1-22-72 R
 107 Standard Section 2-22-72 R
 108 Standard Section 3-22-72 R
 109 Standard Section 4-22-72 R



STATE OF VERMONT
 DEPARTMENT OF HIGHWAYS

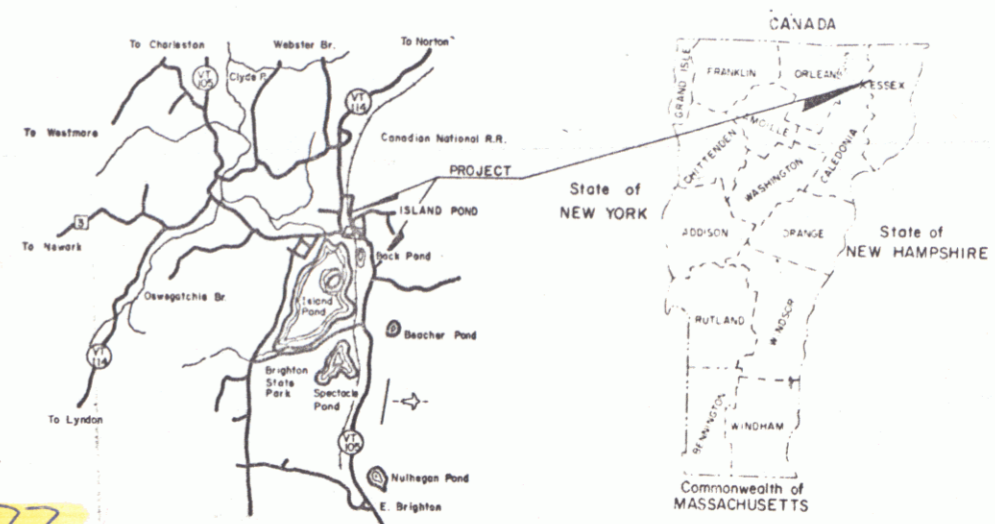


PROPOSED IMPROVEMENT
 TOWN OF BRIGHTON
 COUNTY OF ESSEX

VI. RTE. 105 BRIGHTON-BLOOMFIELD ROAD
 BEGINNING AT A POINT 116.7 MILES NORTHEASTERLY OF THE ISLAND POND VILLAGE LIMITS ON ROUTE 105 AND EXTENDING NORTHEASTERLY 0.236 MILES
 T.H. 38 FRONTAGE ROAD IS INCLUDED AS PART OF THE ABOVE PROJECT

LENGTH OF ROADWAY	1206.51 FEET = 0.229 MILES
LENGTH OF BRIDGE	48.49 FEET = 0.009 MILES
LENGTH OF PROJECT	1255.00 FEET = 0.236 MILES

1972	ADT	1660
1992	ADT	2840
1992	DHV	400
	D	54%
	T	6%
	V	30 MPH



BRIGHTON BR F 034-3(1)
 RECORD PLANS
 MATERIALS

- SUBBASE OF GRAVEL—ALLEN PIT & CARBONEAU PIT—BRIGHTON, VT.
- SAND CUSHION—BARNES PIT—BRIGHTON, VT.
- PLANT MIXED BASE COURSE & BITUMINOUS CONCRETE PAVEMENT—L.M. PIKE & SON, INC.—COVENTRY, VT.
- ASPHALT FOR SURFACE TREATMENT—MOBIL OIL CORP.—E. PROVIDENCE, R.I.
- CONCRETE CLASS B—CALKINS READY-MIX CONCRETE—LYNDVILLE & COVENTRY, VT.
- 41P ENTRAINING ADMIXTURE—CONSTRUCTION PRODUCTS DIV. OF W.R. GRACE & CO., DANVER, MA.
- REINFORCING STEEL—K ROSS BUILDING SUPPLY CENTER, INC.—LEBANON, N.H.
- WATER REPELLENT—P.P. & INDUSTRIALS—PITTSBURGH, PA.
- METAL PIPE CULVERTS—NORTHEASTERN CULVERT CORP.—WESTMINSTER, VT.
- PRECAST RIGID FRAME CONCRETE CURB DROP INLET—CALCO, INC.—WATERFORD, VT.
- METAL HAND RAILING—U.S. STEEL CORP.—FAIRLESS, PA.
- BRIDGE RAILING—HARD WELDER CO., INC.—FAIRLESS, PA.
- GUARD RAIL ITEMS—GRISWOLD FENCE CO., INC.—WILLISTON, VT.
- DECIDUOUS TREES & SHRUBS—YOUNGS GREEN MOUNTAIN NURSERY, INC.—IRASBURG, VT.

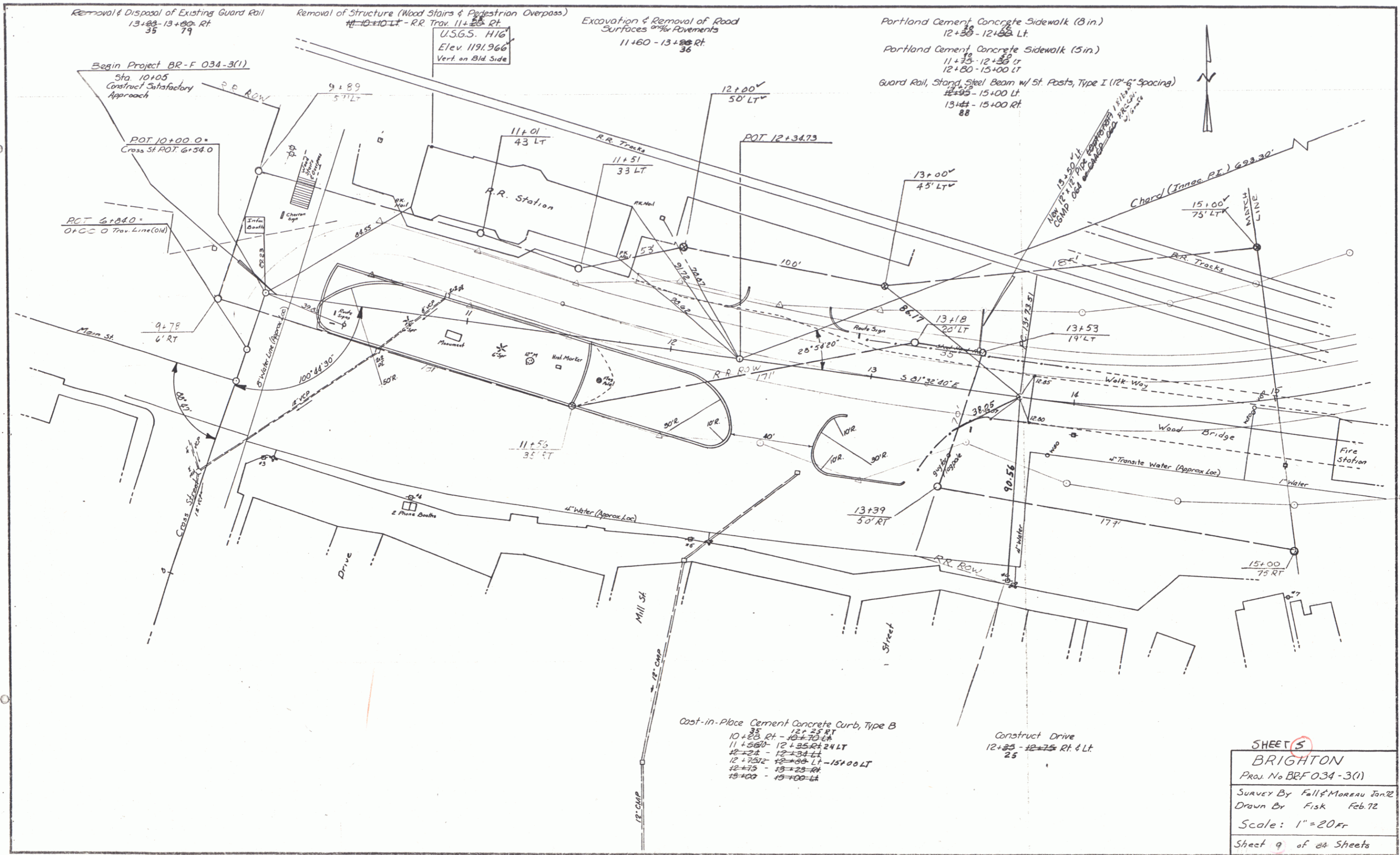
CONTRACTOR: CALLEDONIA, INC., ST. JOHNSBURY, VT.
 REGISTERED ENGINEER—RUDDOLPH L. BROW, IRASBURG, VT.
 INSPECTOR—WILLIAM A. EARLE, IRASBURG, VT.
 RECORD PLANS—A.G. SPIDLE.

CONTRACT DATED—DECEMBER 8, 1972.
 STARTED—JANUARY 2, 1973.
 COMPLETED—OCTOBER 11, 1973.
 ACCEPTED—OCTOBER 11, 1973.

RIGHT-OF-WAY DIVISION
 TOWN FILE
 PERPETUAL
 Town of VT 105
 (To Be Returned To R.O.W. Division)

These plans are subject to such engineering changes as may be required by the Federal Highway Administration or the Chief Engineer.
 Construction is to be carried on in accordance with these plans and the Standard Specifications for Highway and Bridge Construction dated January 3, 1972 as approved by the Federal Highway Administration on December 28, 1971 for use on this project, including all subsequent revisions and such revised specification and special provisions as are incorporated in these plans.

SUBMITTED BY ORDER OF THE STATE HIGHWAY BOARD
 APPROVED: R.H. Arnold DATE 3/15/72
 CHIEF ENGINEER
 DEPARTMENT OF TRANSPORTATION
 FEDERAL HIGHWAY ADMINISTRATION
 APPROVED: _____ DATE _____
 DIVISION ENGINEER
 BRIGHTON PROJECT BR-F 034-3(1)
 SHEET 1 OF 84 SHEETS
 BR-F 12/17/72



Removal & Disposal of Existing Guard Rail
13+88 - 13+99 Rt
35 79

Removal of Structure (Wood Stairs & Pedestrian Overpass)
11+10 LT - R.R. Trac. 11+25 Rt
36

Excavation & Removal of Road Surfaces & Pavements
11+60 - 13+88 Rt
36

Portland Cement Concrete Sidewalk (8 in.)
12+38 - 12+58 Lt.

Portland Cement Concrete Sidewalk (5 in.)
11+75 - 12+38 Lt
12+80 - 13+00 Lt

Guard Rail, Storage Steel Beam w/ St. Posts, Type I (12'-6" Spacing)
12+58 - 13+00 Lt
13+44 - 13+50 Rt
88

Begin Project BR-F 034-3(1)
Sta. 10+05
Construct Satisfactory Approach

POT 10+00.0
Cross St. POT. 6+54.0

POT 6+80.0
O.C.C. O. Trac. Line (Old)

U.S.G.S. H16
Elev. 1191.966
Vert. on Bid Side

POT 12+34.73

13+00
45' Lt

Chord (Times Rt.) 693.30'

15+00
75' Lt

Main St

R.R. Station

Walk Way

Wood Bridge

Transite Water (Approx Loc)

Fire Station

Water (Approx Loc)

Construct Drive
12+25 - 12+75 Rt. & Lt.
25

Cast-in-Place Cement Concrete Curb, Type B
10+20 Rt - 12+25 Rt
11+58 Lt - 12+35 Lt & 24 Lt
12+24 - 12+34 Lt
12+75 Lt - 13+00 Lt
12+75 - 13+25 Rt
13+00 - 13+00 Lt

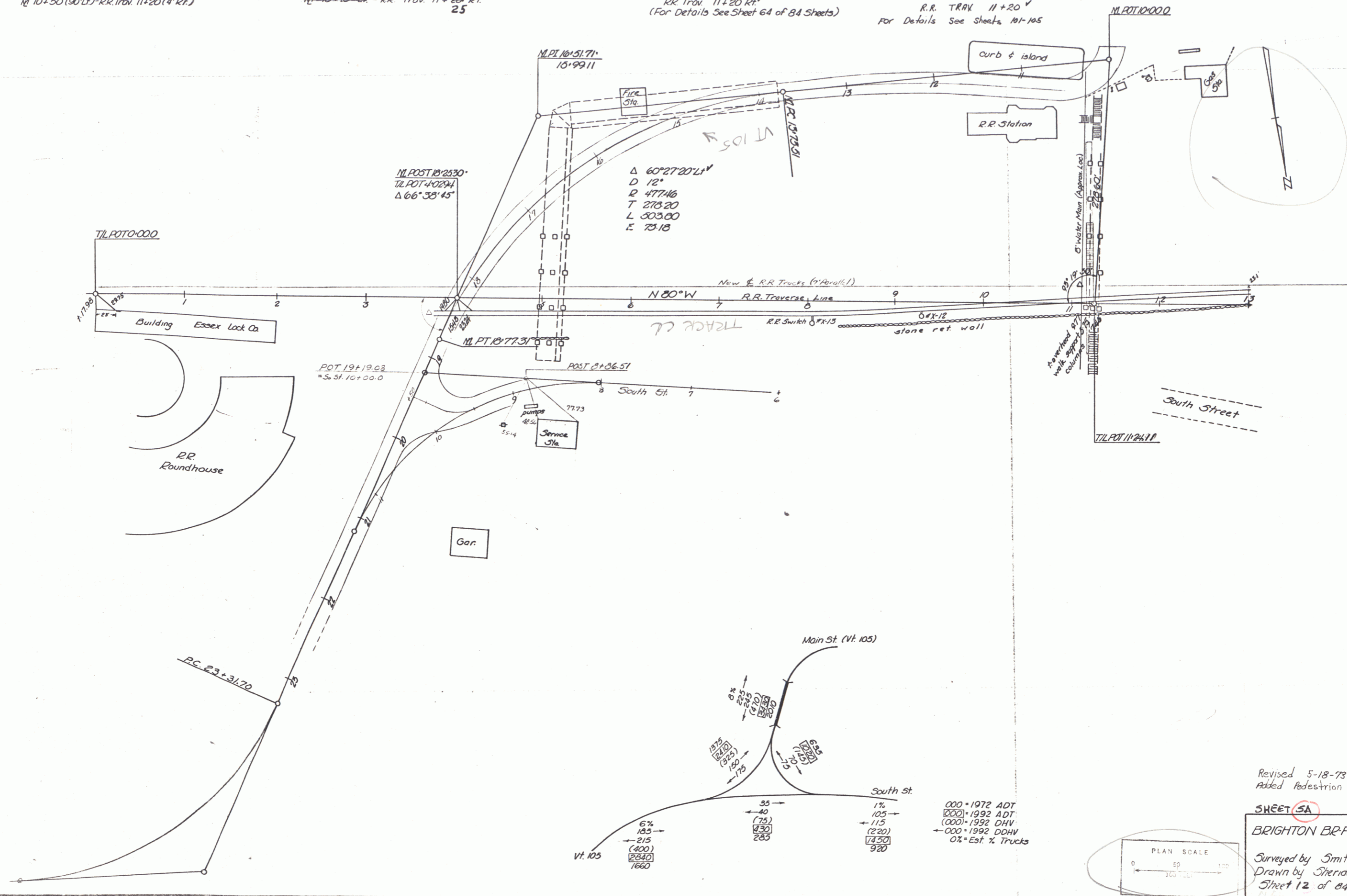
SHEET 5
BRIGHTON
Proj. No BR-F 034-3(1)
Survey By Fall & Moreau Jan. 72
Drawn By Fisk Feb. 72
Scale: 1" = 20 Ft.
Sheet 9 of 24 Sheets

Bituminous Concrete Sidewalk
 N+ 10+50 (90' LT) - R.R. Trk. 11+20 (4' RT.)

Removal of Structure (Wood Stairs & Pedestrian Overpass)
~~N+ 10+10~~ - R.R. Trk. 11+20 RT.
 25

Construct Concrete Steps
 R.R. Trk. 11+20 RT.
 (For Details See Sheet 64 of 84 Sheets)

CONSTRUCT NEW PEDESTRIAN WALKWAY
 R.R. TRK. 11+20
 For Details See Sheets 101-105

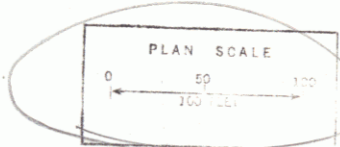


Revised 5-18-73 ELL
 Added Pedestrian Walkway

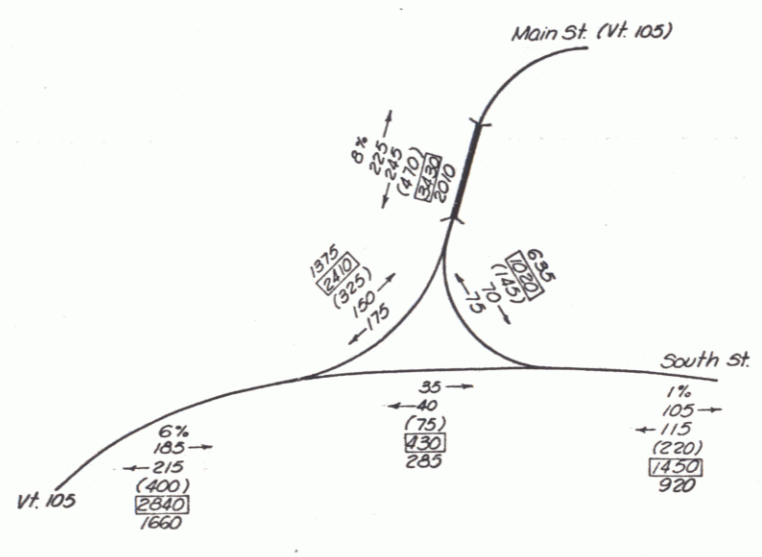
SHEET SA OF 2

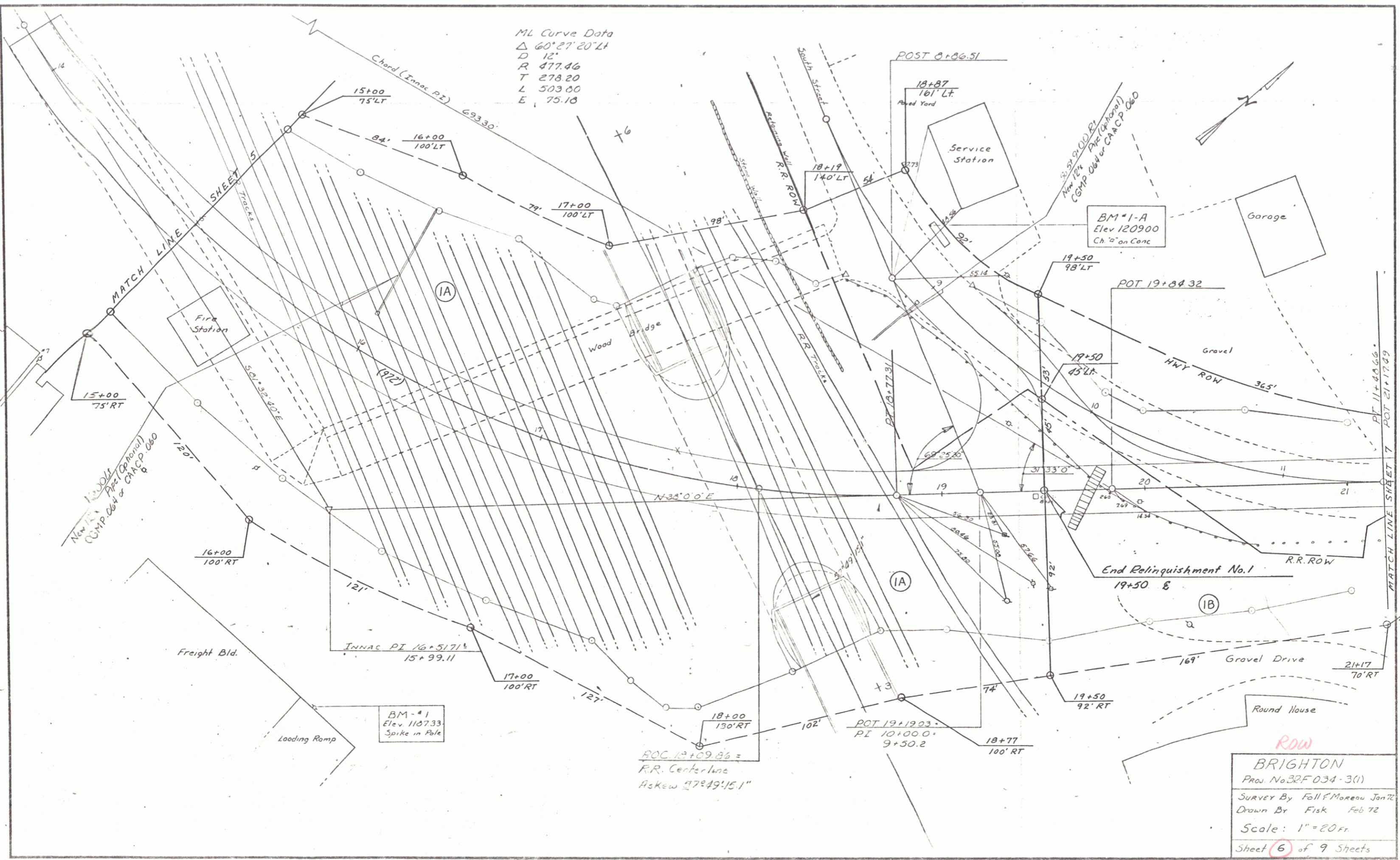
BRIGHTON BR-F 034-3(1)

Surveyed by Smith 4/72
 Drawn by Sheridan 4/72
 Sheet 12 of 84 Sheets



000' 1972 ADT
 000' 1992 ADT
 000' 1992 OHV
 000' 1992 OHV
 0% Est. % Trucks





ML Curve Data
 Δ 60° 27' 20" LT
 D 12'
 R 477.46
 T 278.20
 L 503.00
 E 75.10

Chord (Innoc. Pt) 693.30'

15+00
75' RT

16+00
100' RT

17+00
100' RT

18+00
130' RT

18+77
100' RT

19+50
92' RT

INNOC PI 16+51.71'
15+99.11

POT 19+190.3
PI 10+00.0
9+50.2

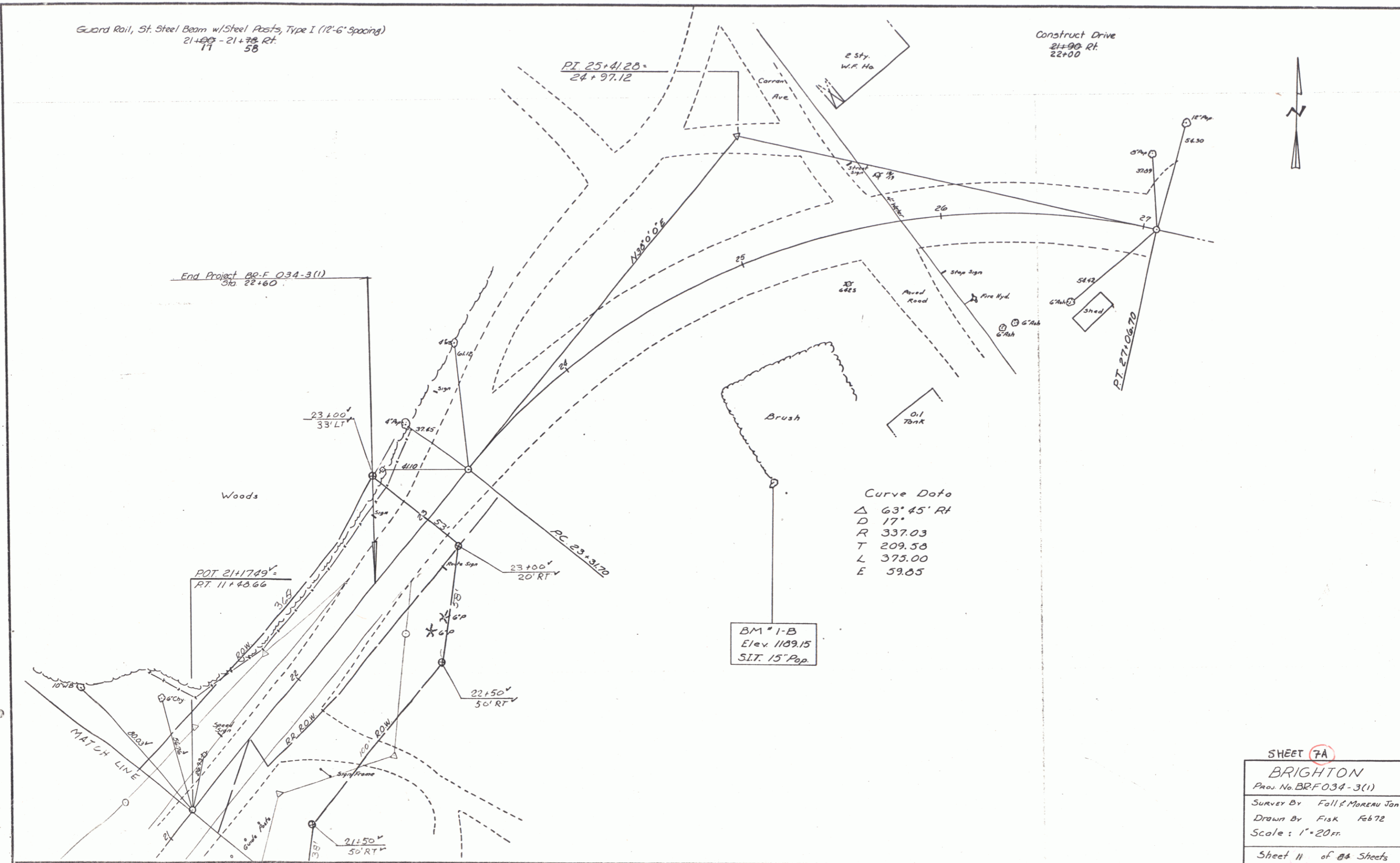
POT 19+84.32

PI 11+80.66'
POT 21+17.49

BM-41
Elev. 1107.33
Spike in Pole

BM-1-A
Elev 1209.00
Ch. 10" on Conc

ROW
BRIGHTON
 Proj. No. 32F034-3(1)
 Survey By Fall F. Moreau Jan 72
 Drawn By Fisk Feb 72
 Scale: 1" = 20 ft.
 Sheet (6) of 9 Sheets



SHEET 7A

BRIGHTON

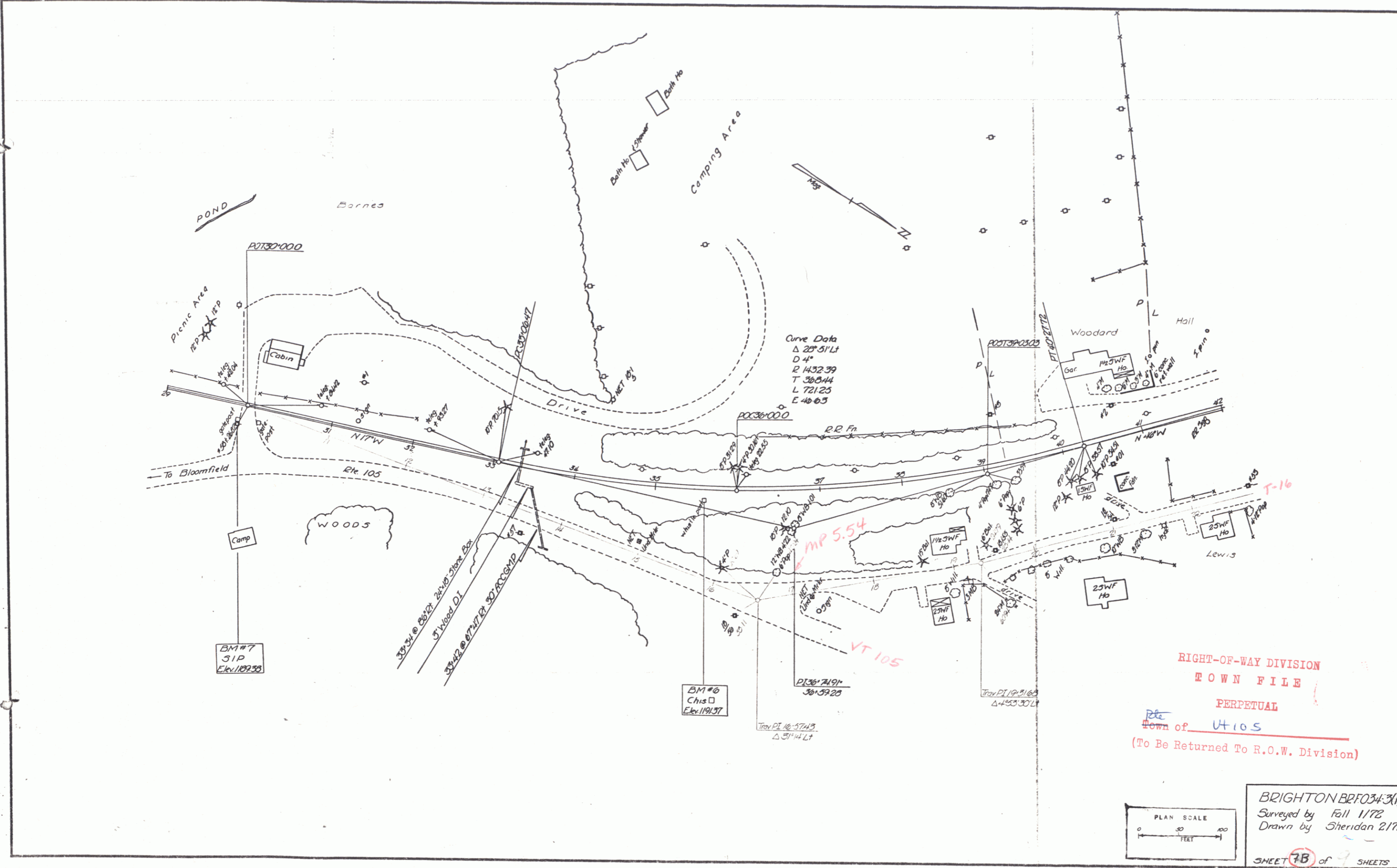
Proj. No. BR-F 034-3(1)

Survey By Fall & MOREAU Jan 72

Drawn By Fisk Feb 72

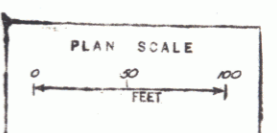
Scale: 1"=20 ft.

Sheet 11 of 84 Sheets

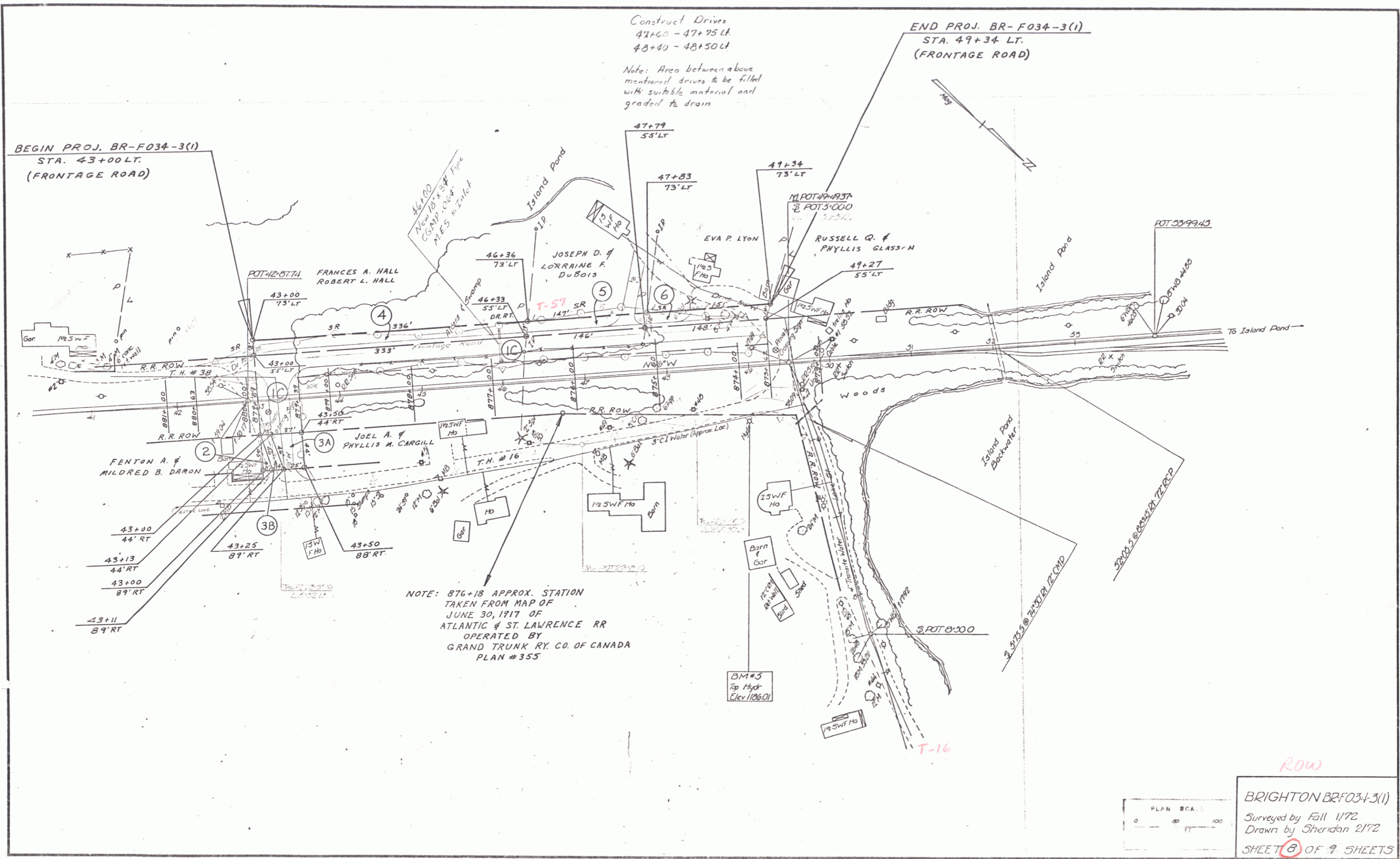


Curve Data
 Δ 20° 51' Lt
 D 4"
 R 1432.39
 T 385.44
 L 721.25
 E 40.63

RIGHT-OF-WAY DIVISION
 TOWN FILE
 PERPETUAL
 Rte
 Town of VT 105
 (To Be Returned To R.O.W. Division)



BRIGHTON BRFO34-3(1)
 Surveyed by Fall 11/72
 Drawn by Sheridan 2/72
 SHEET 7B of 9 SHEETS



BEGIN PROJ. BR-F034-3(1)
STA. 43+00 LT.
(FRONTAGE ROAD)

Construct Drives
47+60 - 47+75 Lt.
48+40 - 48+50 Lt.
Note: Area between above
mentioned drives to be filled
with suitable material and
graded to drain

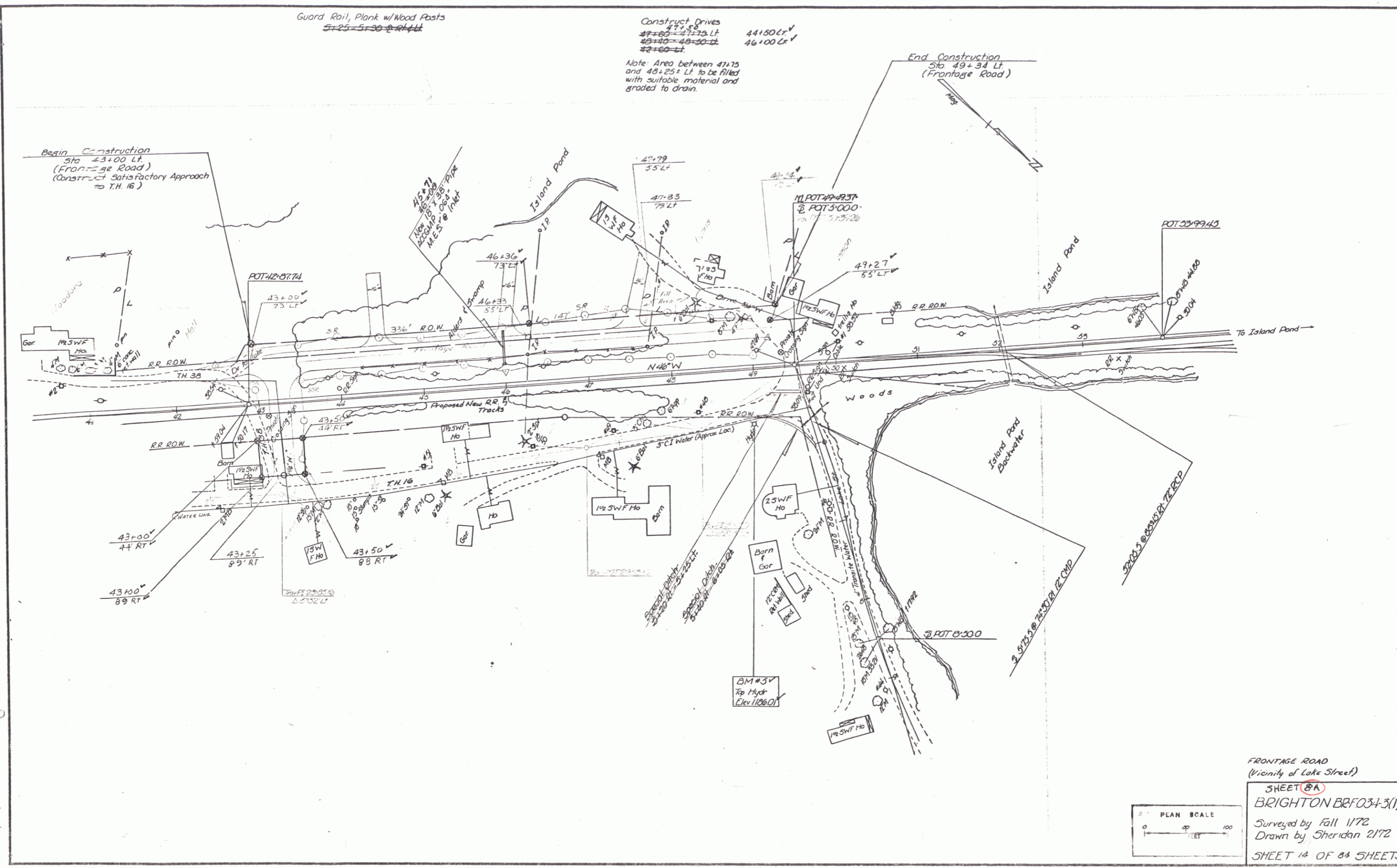
END PROJ. BR-F034-3(1)
STA. 49+34 LT.
(FRONTAGE ROAD)

NOTE: 876+18 APPROX. STATION
TAKEN FROM MAP OF
JUNE 30, 1917 OF
ATLANTIC & ST. LAWRENCE RR
OPERATED BY
GRAND TRUNK RY. CO. OF CANADA
PLAN #355



BRIGHTON BR-F034-3(1)
Surveyed by Fall 1/72
Drawn by Sheridan 2/72
SHEET 8 OF 9 SHEETS

ROW



FRONTAGE ROAD
 (Vicinity of Lake Street)

SHEET 8A
 BRIGHTON BRFO34-3(1)
 Surveyed by Fall 1/72
 Drawn by Sheridan 2/72
 SHEET 14 OF 84 SHEETS