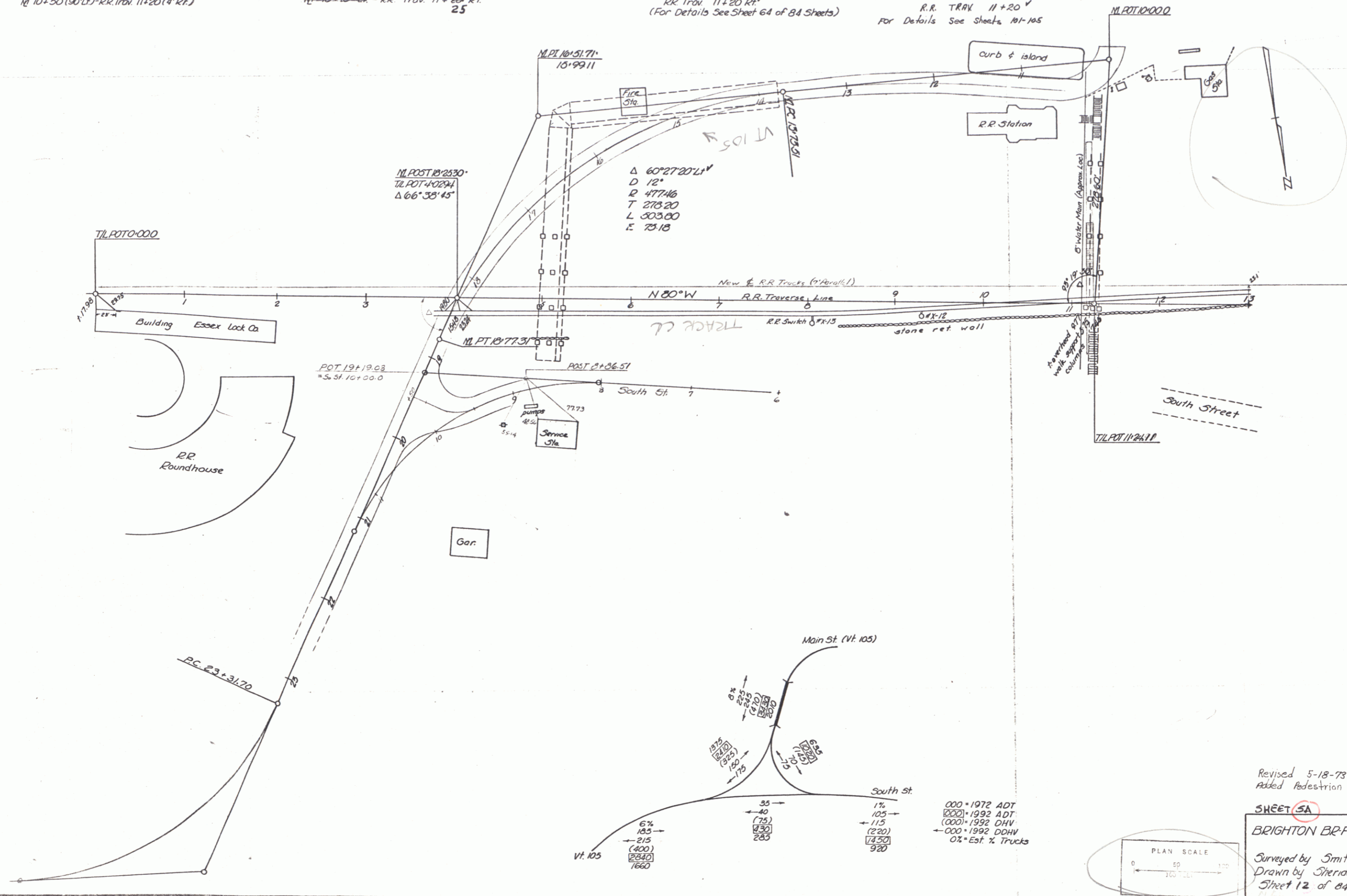


Bituminous Concrete Sidewalk
 N+ 10+50 (90' LT) - R.R. Trk. 11+20 (4' RT.)

Removal of Structure (Wood Stairs & Pedestrian Overpass)
 N+ 10+10 - R.R. Trk. 11+20 RT.
 25

Construct Concrete Steps
 R.R. Trk. 11+20 RT.
 (For Details See Sheet 64 of 84 Sheets)

CONSTRUCT NEW PEDESTRIAN WALKWAY
 R.R. TRK. 11+20
 For Details See Sheets 101-105



Revised 5-18-73 ELL
 Added Pedestrian Walkway

SHEET SA 1 OF 2

BRIGHTON BR-F 034-3(1)

Surveyed by Smith 4/72
 Drawn by Sheridan 4/72
 Sheet 12 of 84 Sheets

000 = 1972 ADT
 0000 = 1992 ADT
 0000 = 1992 OHV
 000 = 1992 DDHV
 0% Est. % Trucks