

INDEX OF SHEETS

SHEET NO. 1	TITLE PAGE
2	TYPICAL CROSS-SECTION OF IMPROVEMENT
3	BARROWS AND MEASURING TABLES
4-10	PLAN AND PROFILE SHEETS
11	STANDARD STRUCTURE SHEET 5-30 <i>PIPE CULVERTS</i>
12	5-31 <i>BOX</i>
13	5-32 <i>GUARD RAIL</i>
14	5-33 <i>BOUNDARIES, SIGNS, AND LIGHTS</i>
15	5-34 <i>BOUNDARY MARKERS</i>
16-36	CROSS SECTIONS

STANDARD SHEET 5-28 AND 5-29 APPROVED BY THE CHIEF ENGINEER ON JULY 14, 1933.
STANDARD SHEET 5-30 APPROVED BY THE CHIEF ENGINEER ON FEB. 15, 1933.

FED. ROAD DIST. NO.	STATE	PROJECT NO.	FISCAL YEAR	SHEET NO.	TOTAL SHEETS
9	VT.	89-B	1934	1	36

STATE OF VERMONT
STATE HIGHWAY DEPARTMENT

PLAN AND PROFILE OF PROPOSED
STATE HIGHWAY

NATIONAL RECOVERY HIGHWAY PROJECT

ISLAND POND VILLAGE

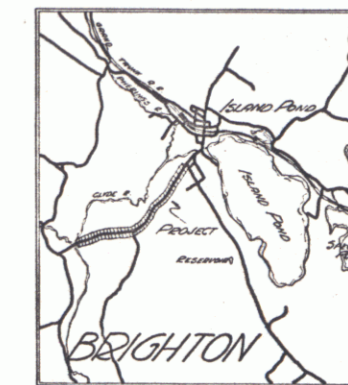
TOWN OF BRIGHTON

DERBY STREET

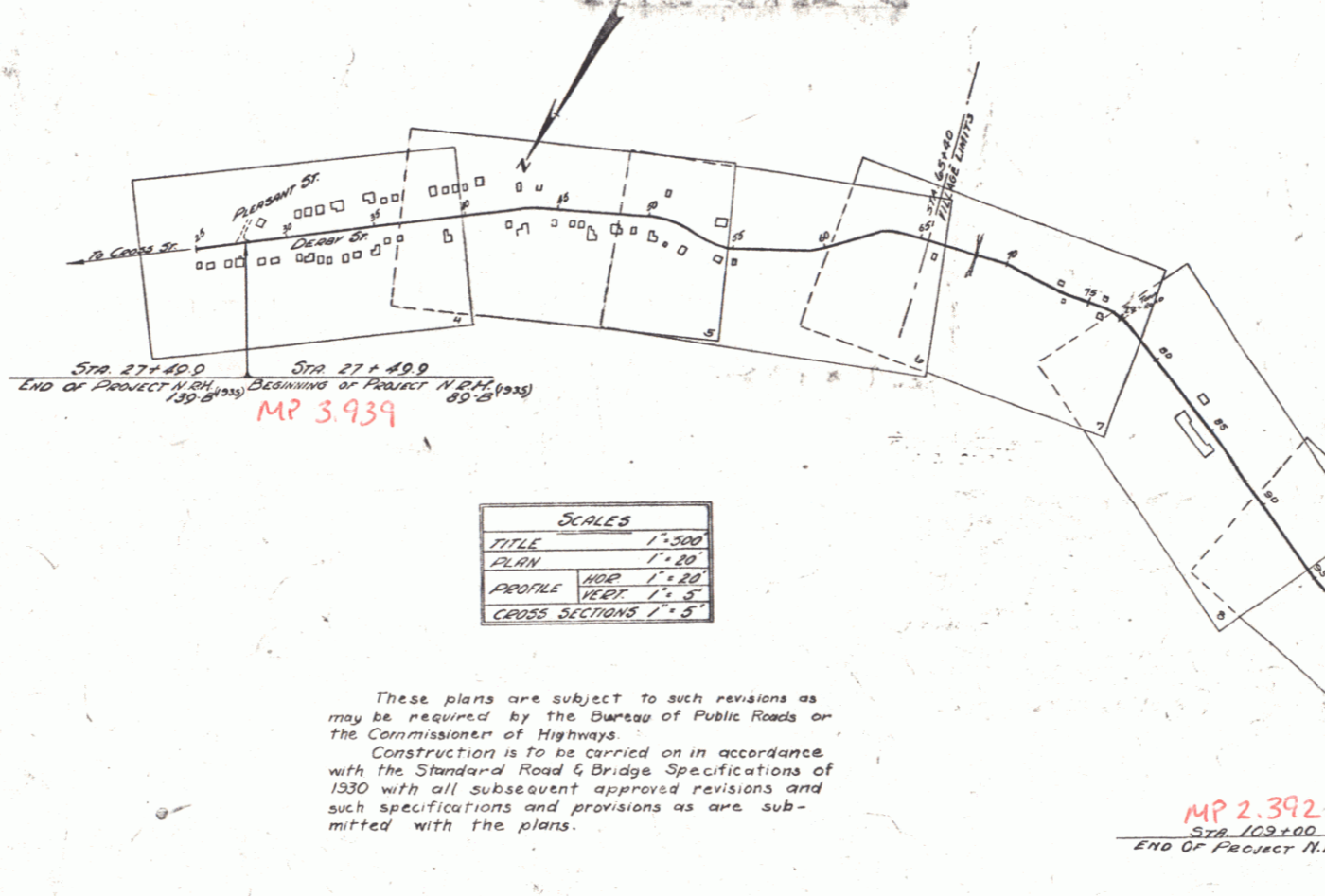
FROM THE INTERSECTION WITH PLEASANT STREET
WESTERLY 1.543 MI. TO A POINT IN FRONT OF THE
RESIDENCE OF WILLIAM MORRIS.

LENGTH OF PROJECT 1.543 MI. = 8149.6 FT.

Pin# 00R175



RECORD PLANS



ATTENTION OF CONTRACTORS IS CALLED TO THE FACT THAT THE STATE HIGHWAY BOARD RESERVES THE RIGHT TO EXTEND THIS PROJECT WESTERLY AT THE SAME CONTRACT PRICES, SAID COST OF EXTENSION NOT TO EXCEED 25% OF THE AMOUNT OF THE CONTRACT.

RIGHT-OF-WAY DIVISION
TOWN FILE

PERPETUAL

Town of W 105

(To Be Returned To Approved: Div 103)

H. J. Gaudin
Commissioner of Highways

SUBMITTED BY ORDER OF THE STATE HIGHWAY BOARD

NOTE: ANY FURTHER INFORMATION CONCERNING FISCAL QUANTITIES, ACCOUNTS OR OTHER DETAILS RELATIVE TO THIS PROJECT MAY BE FOUND IN EITHER THE FIELD BOOKS OR THE ESTIMATE FILE.

CONVENTIONAL SIGNS

COUNTY LINE	GROUND ELEVATION
TOWN LINE	FENCE LINE
STONE WALL	UNFENCED PROPERTY
GUARD RAIL	TRAVELED WAY
RAILROAD	RETAINING WALL
CENTER LINE	SURVEY LINE
CULVERT	DROP INLET
TROLLEY POLE	POWER POLE
TELEPHONE POLE	TREES
HEDGE	

CURVE DATA

DEFLECTION ANGLE	Δ
DEGREE OF CURVE	D
RADIUS OF CURVE	R
TANGENT DISTANCE	T
LENGTH OF CURVE	L
EXTERNAL DISTANCE	E
POINT OF INTERSECTION	P. I.
POINT OF CURVE	P. C.
POINT OF TANGENT	P. T.
POINT ON TANGENT	P. O. T.

SCALES

TITLE	1" = 500'
PLAN	1" = 40'
PROFILE	1" = 10'
VEGET.	1" = 5'
CROSS SECTIONS	1" = 5'

These plans are subject to such revisions as may be required by the Bureau of Public Roads or the Commissioner of Highways. Construction is to be carried on in accordance with the Standard Road & Bridge Specifications of 1930 with all subsequent approved revisions and such specifications and provisions as are submitted with the plans.

MP 2.392
Sta 102+00
END OF PROJECT N.R.H. 89-B (1935)

RECOMMENDED
DISTRICT ENGINEER BUREAU OF PUBLIC ROADS
RECOMMENDED FOR APPROVAL
CHIEF ENGINEER BUREAU OF PUBLIC ROADS
APPROVED
DIRECTOR BUREAU OF PUBLIC ROADS

SERIES NO. 89-B FILED
SHEET 1 OF 36