

INDEX OF SHEETS

SHEET NO. 1	TITLE PAGE
" 2	TYPICAL CROSS-SECTION OF IMPROVEMENT (5% GRAVEL MIXED-IN-PLACE SURFACE COURSE WITH REFINED TAR/ITEMS 245 & 244)
" 3	BANKING AND WIDENING TABLES
" 4.0	PLAN AND PROFILE SHEETS
" 11	STD. STRUCTURE SHEET 328 → PIPE CULV'S.
" 12	STD. STRUCTURE SHEET 329 → BOX CULV'S.
" 13	STD. STRUCTURE SHEET 330 → GUARD RAIL.
" 14	STD. STRUCTURE SHEET 331 → BOUNDARY MARKERS.
" 15	STD. STRUCTURE SHEET 332 → C.R.M. BOXES.
" 16	STD. STRUCTURE SHEET 340 → BARRICADE, SIGNS & LIGHTS.
" 412-34	CROSS SECTIONS

Std sheets 328 & 329 approved by the Chief Engineer on July 11, 1935.
Std sheet 330 approved by the Chief Engineer on Aug 15, 1935.
Std sheet 331 approved by the Chief Engineer on July 25, 1934.

(To Be Returned To R.O.W. Division)

Perpetual
Town of VT 105
RIGHT-OF-WAY DIVISION

STATE OF VERMONT
STATE HIGHWAY DEPARTMENT

PLAN AND PROFILE OF PROPOSED
STATE HIGHWAY

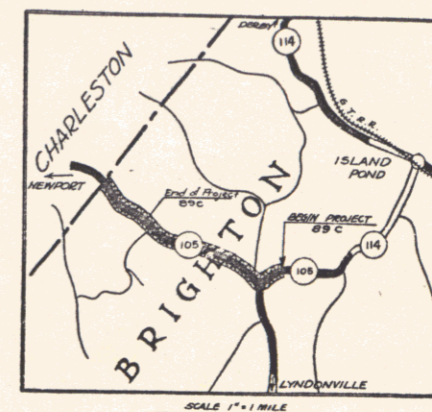
FEDERAL AID PROJECT

TOWN OF BRIGHTON Pin# 00R174

BRIGHTON - DERBY ROAD

VT 105

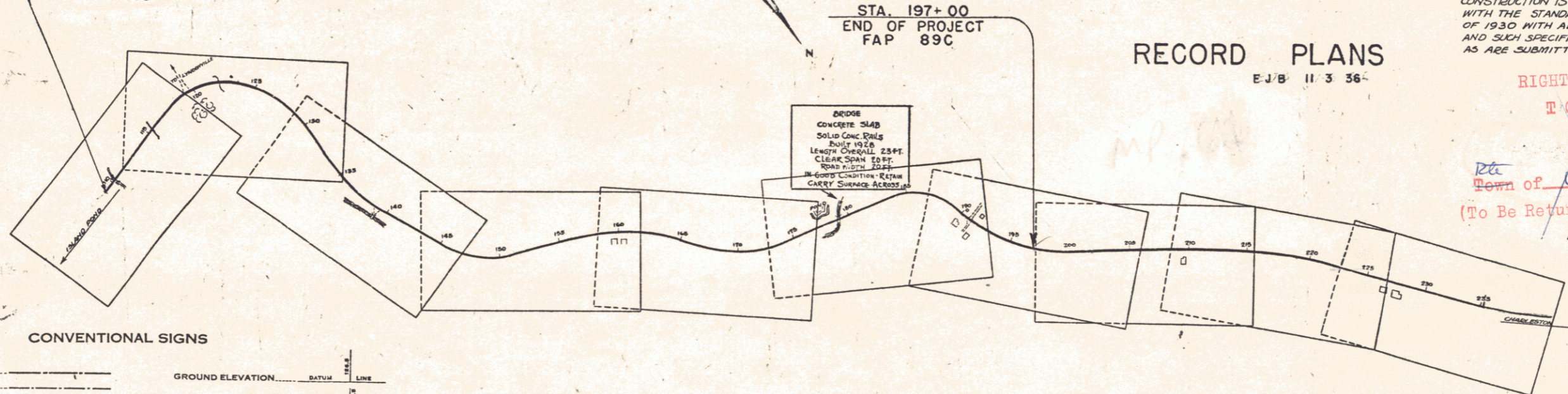
ON ROUTE 105 FROM A POINT APPROXIMATELY 1000 FT. NORTHEAST OF JCT. WITH ROUTE 114 NORTHWESTERLY 1.662 MILES TO A POINT APPROXIMATELY 500 FT. NORTHWEST OF THE BEMIS SCHOOL.
LENGTH OF PROJECT 8779.2 FT. = 1.662 MI.



FED. ROAD DIST. NO.	STATE	FED. AID PROJ. NO.	FISCAL YEAR	SHEET NO.	TOTAL SHEETS
9	VT.	89-C	1936	1	34

MP 2.392
STA. 109+00
END OF PROJECT NRH 89B (1935)
BEGINNING OF PROJECT FAP 89C

MP 0.720
STA. 197+00
END OF PROJECT FAP 89C



RECORD PLANS
E.J.B. 11 3 36

THESE PLANS ARE SUBJECT TO SUCH REVISIONS AS MAY BE REQUIRED BY THE BUREAU OF PUBLIC ROADS OR THE COMMISSIONER OF HIGHWAYS. CONSTRUCTION IS TO BE CARRIED ON IN ACCORDANCE WITH THE STANDARD ROAD & BRIDGE SPECIFICATIONS OF 1930 WITH ALL SUBSEQUENT APPROVED REVISIONS AND SUCH SPECIFICATIONS AND SPECIAL PROVISIONS AS ARE SUBMITTED WITH THE PLANS.

RIGHT-OF-WAY DIVISION
TOWN FILE
PERPETUAL
Town of VT 105
(To Be Returned To R.O.W. Division)

APPROVED: *July 8, 1935*
H. E. Sargent
COMMISSIONER OF HIGHWAYS
SUBMITTED BY ORDER OF THE STATE HIGHWAY BOARD

CONVENTIONAL SIGNS

COUNTY LINE	GROUND ELEVATION
TOWN LINE	FENCE LINE
STONE WALL	UNFENCED PROPERTY
GUARD RAIL	RAILROAD
TRAVELED WAY	RETAINING WALL
RAILROAD	CENTER LINE
RETAINING WALL	SURVEY LINE
CULVERT	DROP INLET
TROLLEY POLE	POWER POLE
TELEPHONE POLE	TREES
HEDGE	

BRIGHTON FAP 89-C
RECORD PLANS
CONTR. - E. L. SOMERS, INC.
F.P. 1054

CURVE DATA

DEFLECTION ANGLE	Δ
DEGREE OF CURVE	D
RADIUS OF CURVE	R
TANGENT DISTANCE	T
LENGTH OF CURVE	L
EXTERNAL DISTANCE	E
POINT OF INTERSECTION	P. I.
POINT OF CURVE	P. C.
POINT OF TANGENT	P. T.
POINT ON TANGENT	P. O. T.

SCALE

TITLE	1" = 500'
PLAN	1" = 50'
PROFILE	1" = 5'
CROSS SECTIONS	1" = 5'

Attention of the contractor is called to the fact that the State Highway Board reserves the right to extend this project northwesterly at the same contract prices. Said cost of extension not to exceed 25% of the amount of the contract.

NOTE: ANY FURTHER INFORMATION CONCERNING FINAL QUANTITIES, AMOUNTS OR OTHER DETAILS RELATIVE TO THIS PROJECT MAY BE OBTAINED EITHER THE FIELD BOOKS OR THE ESTIMATE FILE.

RECOMMENDED
DISTRICT ENGINEER
BUREAU OF PUBLIC ROADS
RECOMMENDED FOR APPROVAL
CHIEF ENGINEER
BUREAU OF PUBLIC ROADS
APPROVED
DIRECTOR - BUREAU OF PUBLIC ROADS

CORRECT: *July 8, 1935*
C. H. ...
ROAD ENGINEER
SERIES F NC 89C FILED
SHEET 1 OF 34