

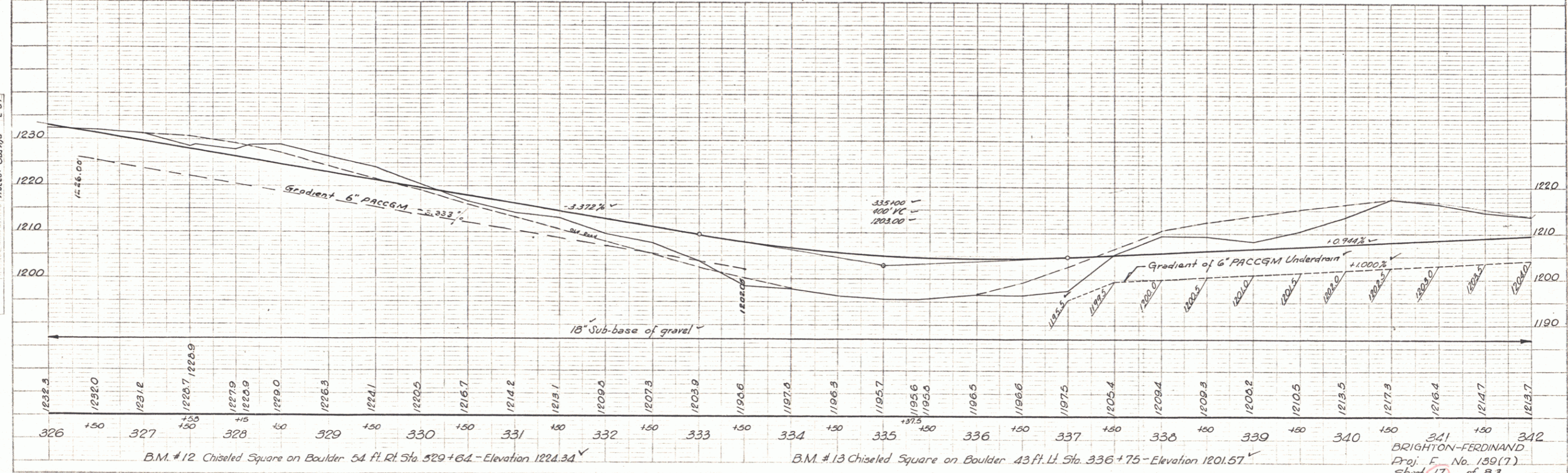
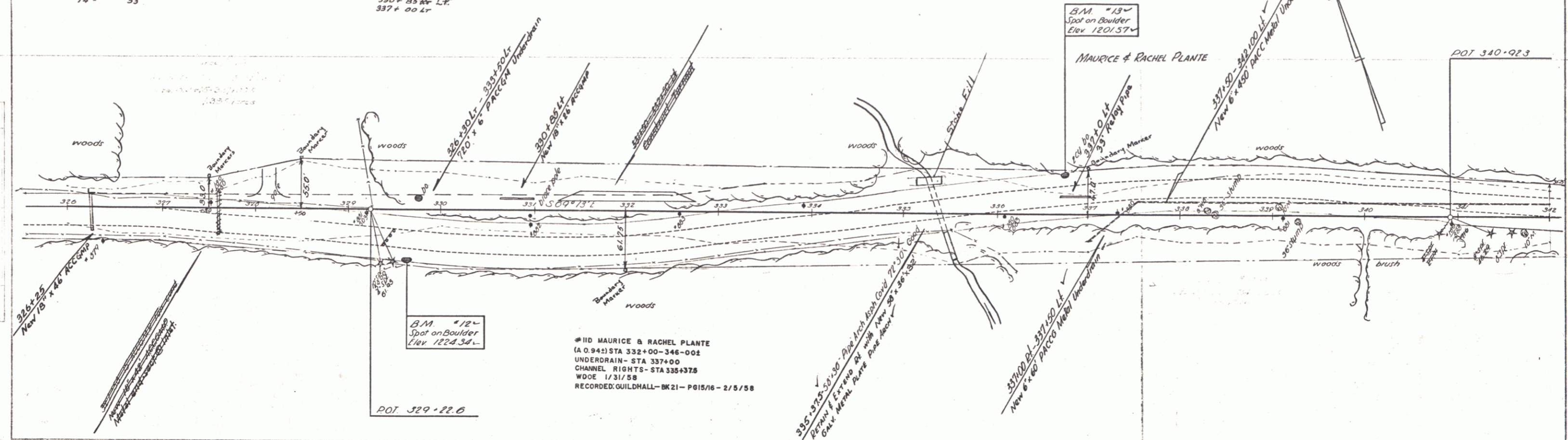
**THREE CABLE GUARD RAIL WITH STEEL POSTS**  
 Sta. 334+94 Lt. Rt. 426' 467'  
 332+25-337+81 330 330  
 333+20-336+40 330 330  
 74- 53

**CONSTRUCT DRIVE**  
 328+15-328  
 328+15 Lt. 328+15 Rt.  
 330+50 Lt. Rt.  
 330+50 Lt. Rt.  
 337+00 Lt.

**EXCAVATION & REMOVAL OF SURFACE ON DISCONTINUED ROADWAYS**  
 328+75-328+25 Rt. Lt.

**PLANK GUARD RAIL**  
 Sta. 329+50 Lt. Rt. 28'

**STEEL GUIDE POSTS**  
 Sta. 326+25 Lt. Rt. 1'-1'  
 337+00 1'-1'



PLAN  
 MAURICE & RACHEL PLANTE  
 1/31/58  
 1/31/58  
 1/31/58  
 1/31/58

MAURICE & RACHEL PLANTE  
 1/31/58  
 1/31/58  
 1/31/58  
 1/31/58

PLATE 1 - PLAN, PROFILE & P&R STATIONS  
 BRIGHTON-FERDINAND  
 Proj. F. No. 139(7)  
 Sheet 17 of 83