

INDEX OF SHEETS

SHEET NO. 1	TITLE PAGE
2	TYPICAL CROSS-SECTION OF IMPROVEMENT DOUBLE TACK COAT OF REFINED TAR WITH PEASTONE SEAL, ITEM 312-A
3	QUANTITY SHEET (ITEMS)
4	QUANTITY SHEET (DRAINAGE)
5-8	EARTHWORK SHEETS
9-21	PLAN AND PROFILE SHEETS
22	DETAILS OF CORR. GALV METAL PLATE PIPE ARCH AT STA 221+00
23	DETAILS OF CORR. GALV METAL PLATE PIPE ARCH AT STA 248+46
23-A	FLASHING LIGHTS SIGNALS SHEET
24	ROADWAY STANDARD SHEET RS 56-1 (BANKING TABLES)
25	ROADWAY STANDARD SHEET RS 56-3 (PLANK RAIL AND MARKERS)
26	ROADWAY STANDARD SHEET RS 56-4 (DRAINAGE)
27	ROADWAY STANDARD SHEET RS 56-6 (SLOPE GRADING AND TURNOUTS)
28	OMITTED
29	ROADWAY STANDARD SHEET RS 56-11 (THREE CABLE GUARD RAIL WITH STEEL POSTS)
30	ROADWAY STANDARD SHEET RS 56-12 (BARRICADES, SIGNS AND LIGHTS)
31-32	CROSS-SECTIONS

STATE OF VERMONT  
DEPARTMENT OF HIGHWAYS  
**PROPOSED IMPROVEMENT**

FEDERAL PROJECT

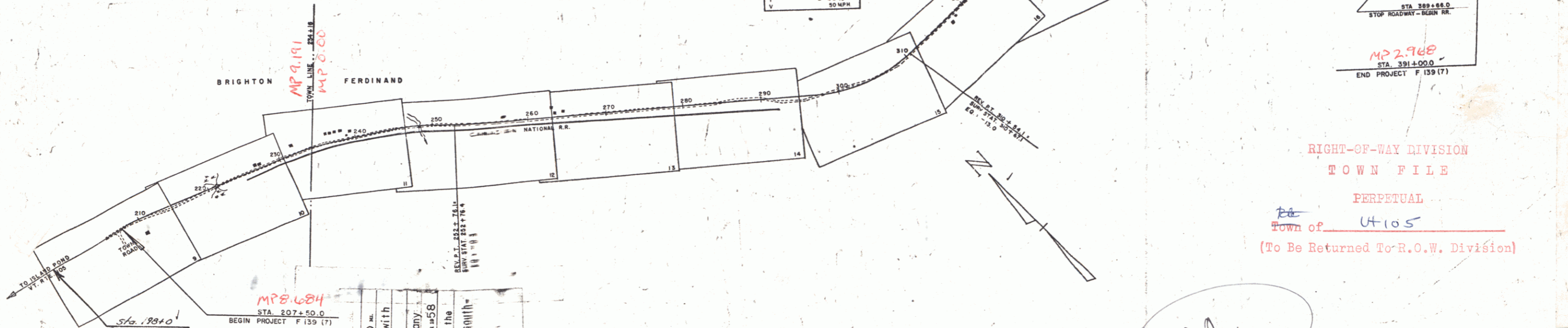
**TOWNS OF BRIGHTON & FERDINAND**  
COUNTY OF ESSEX  
**VT. ROUTE 105**  
ISLAND POND-BLOOMFIELD ROAD

Pin# 00R 173

PROJECT NAME & NUMBER	TYPE	PAVEMENT AREA
BRIGHTON-FERDINAND F 139(7)	DOUBLE TACK COAT	47,178 sq
RECORD PLANS		
MATERIALS		
SUBBASE OF GRAVEL - Gault Pit, Island Pond & Carron Pit, Bloomfield	RCP - Vermont Concrete, Windsor, Vt	
REFINED TAR - Old Colony Tar, Worcester, Mass.	ACCPMP - Northeastern Culvert Co, Westfield, Vt	
CURB AND ASPHALT - Socony Vacuum, E. Prov. R.I.	11" x 15" CGMP Arch - " " "	
GUARD RAIL - Monline Fence, Westboro, Ma.	6" x 8" CGMP - N. Eng. Metal Culf Co, Palmer, Mass	
CONTRACTOR - Caledonia Sand & Gravel Co.	CONTRACT DATED - March 26, 1958	
DESIGN ENGINEER - Frank Aldrich	CONTRACT STARTED - March 27, 1958	
INSPECTORS - A. Lavigne, C. Harpou, S. Robinson	CONTRACT COMPLETED - Sept. 17, 1958	
RECORD PLANS - F. Aldrich	CONTRACT ACCEPTED - Sept. 17, 1958	

BEGINNING AT A POINT 316.0 FEET WEST OF THE BRIGHTON-FERDINAND TOWN LINE AND EXTENDING SOUTH-EASTERLY 18,321.2 FEET, EXCLUDING RR. CROSSING  
19,271.2 3.650  
LENGTH OF PROJECT 18,321.2 FEET = 3.470 MILES

DESIGN DESIGNATION	VALUE
ADT(1958)	400
ADT(1975)	580
DIV	85
S	80%
T	8-1/2%
V	50 MPH



RIGHT-OF-WAY DIVISION  
TOWN FILE  
PERPETUAL  
Town of U105  
(To Be Returned To R.O.W. Division)

CONVENTIONAL SIGNS

ROW LINE	-----
COUNTY LINE	-----
TOWN LINE	-----
FENCE LINE	-----
STONE WALL	-----
UNFENCED PROPERTY	-----
GUARD RAIL	-----
TRAVELED WAY	-----
RAILROAD	-----
RETAINING WALL	-----
CENTER LINE	-----
SURVEY LINE	-----
CULVERT	-----
DROP INLET	-----
TROLLEY POLE	-----
POWER POLE	-----
TELEPHONE POLE	-----
TREES	-----
HEDGE	-----
ROW LIMIT LINE	-----

PROJECT BRIGHTON-FERDINAND  
LENGTH 3.650 MI.  
ITEM 312-A  
Double Tack Coat of Refined Tar with Peastone Seal  
CONTRACTOR Caledonia Sand and Gravel Company  
St. Johnsbury, Vermont  
YEAR 1958  
Location Beginning at a point 3616.0 feet west of the Brighton-Ferdinand town line and extending south.

SCALES

1" = 600'
1" = 200'
1" = 100'
1" = 50'
1" = 25'
1" = 10'
1" = 5'

APPROVED SECONDARY ENGINEER DATE	APPROVED CONSTRUCTION ENGINEER DATE 2/21/58	APPROVED BRIDGE ENGINEER DATE 2/24/58	APPROVED DISTRICT ENGINEER DATE 2/24/58	APPROVED HIGHWAY ENGINEER DATE 2/24/58	APPROVED CHIEF ENGINEER DATE 2/24/58
--	---	---	---	--	--

NOTE: ANY FURTHER INFORMATION CONCERNING FINAL QUANTITIES, AMOUNTS OR OTHER DETAILS RELATIVE TO THIS PROJECT MAY BE FOUND IN EITHER THE FIELD BOOKS OR THE ESTIMATE FILE.

DEPARTMENT OF COMMERCE  
BUREAU OF PUBLIC ROADS  
APPROVED  
DIVISION ENGINEER  
DATE

PROJECT NO. 139(7)  
SHEET 1 OF 83 SHEETS

MP 2.948  
STA. 391+00.0  
END PROJECT F 139(7)

MP 9.191  
MP 8.000

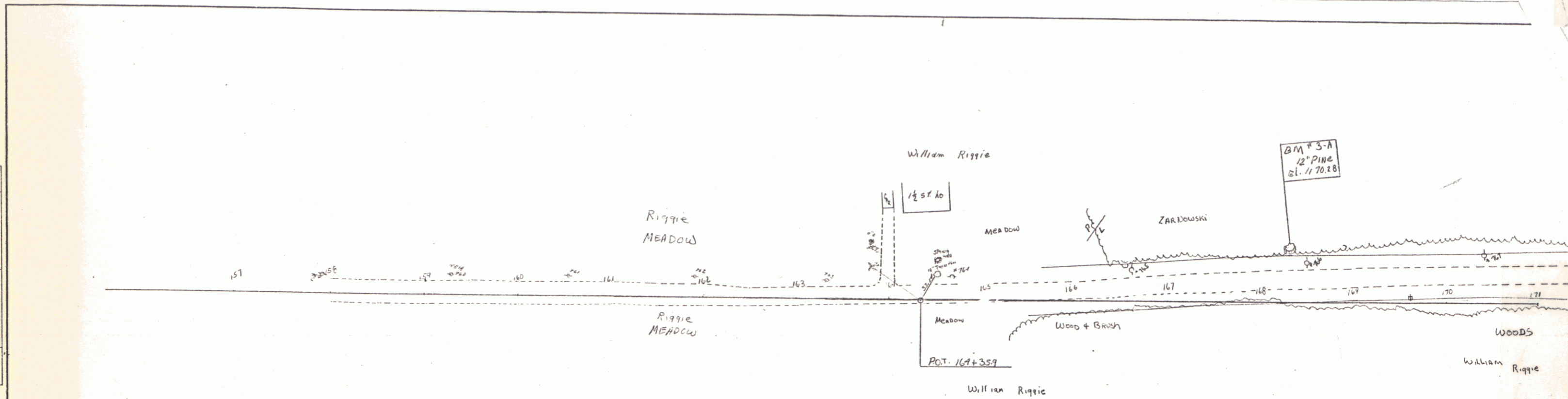
MP 8.684  
STA. 207+50.0  
BEGIN PROJECT F 139(7)

MP 2.948  
STA. 391+00.0  
END PROJECT F 139(7)

MP 3/14/58

PLAN  
 SURVEYED BY  
 PLOTTED AND CHECKED BY  
 DATE  
 NO. OF WAY CHECKED

PROFILE  
 SURVEYED BY  
 PLOTTED AND CHECKED BY  
 DATE  
 NO. OF WAY CHECKED



Not Built

RIGHT-OF-WAY DIVISION  
 TOWN FILE  
 PERPETUAL  
 Town of Vt 105  
 (To Be Returned To R.O.W. Division)

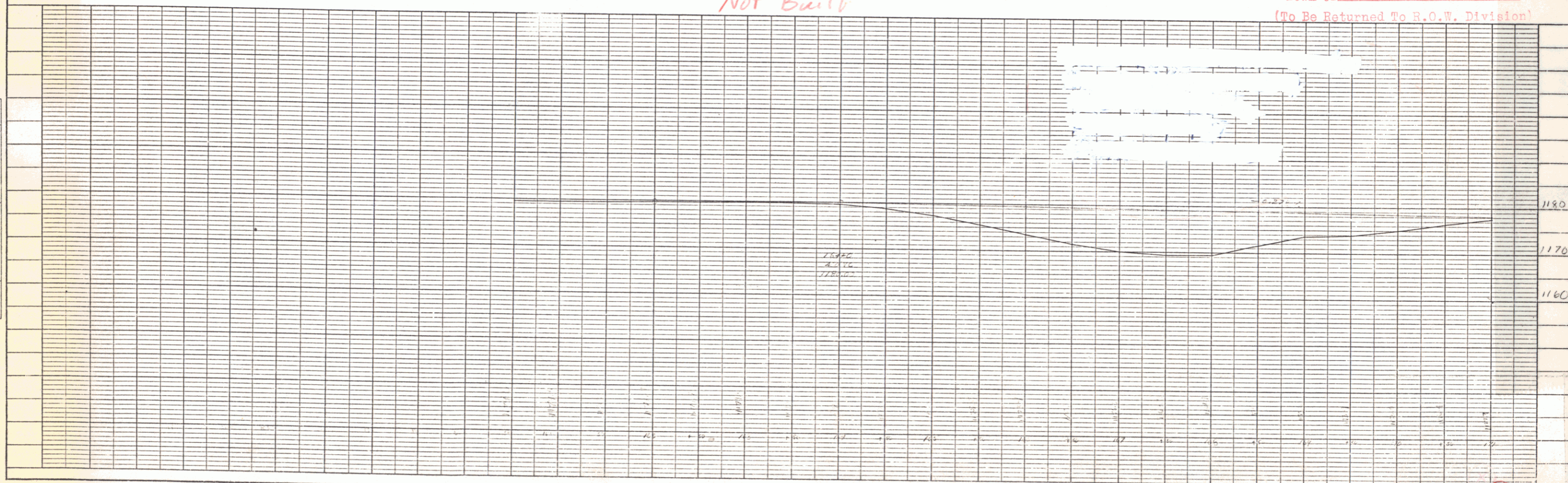
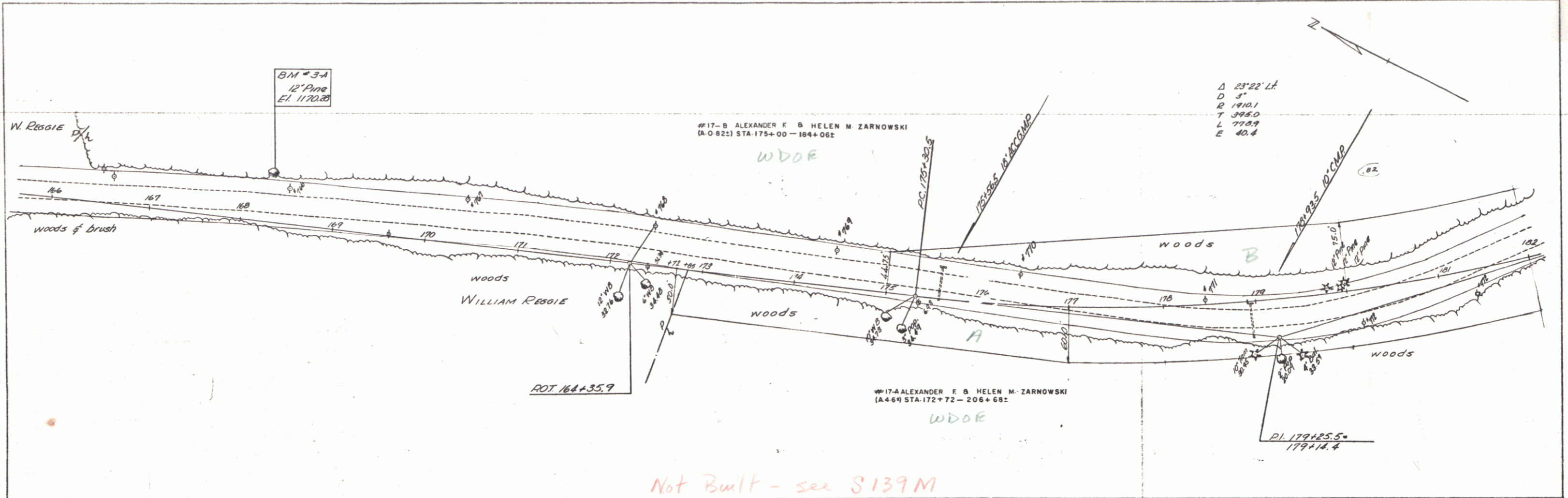


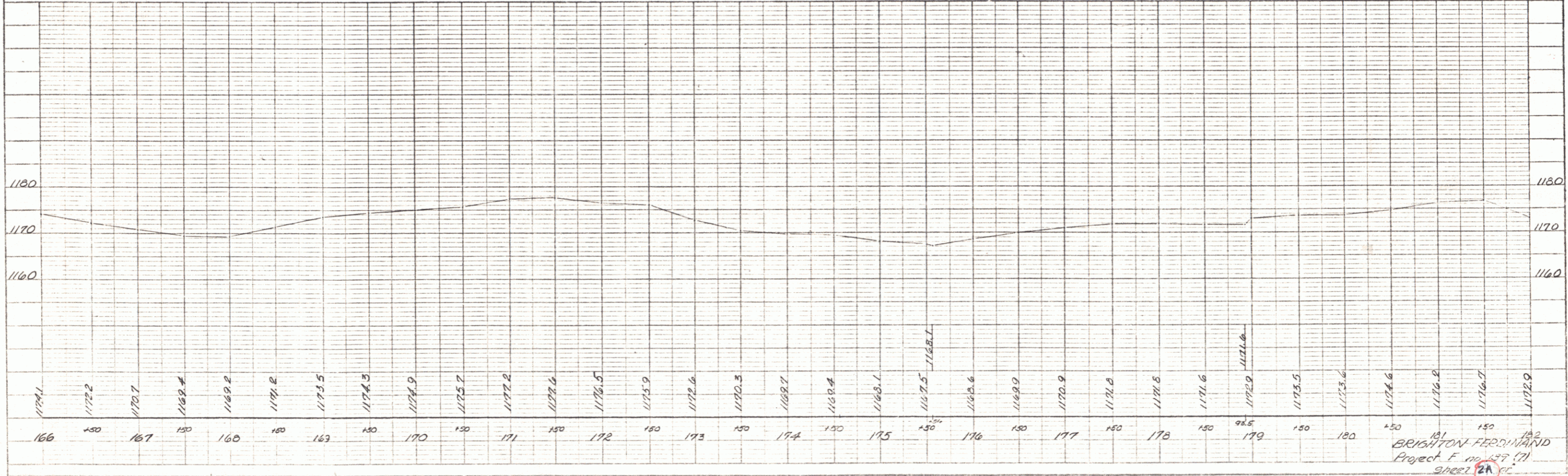
PLATE 1 - PLAN - PROFILE O. P. & E. STANDARD  
 PEUPEL & ESSER CO., NEW YORK  
 K & E CO. NO. 345-1

Sheet 2  
 BRIGTON F 139  
 DIST. # 9 PLANS 2

PLAN  
 DATE: 1/15/58  
 DRAWN BY: M. J. Long  
 CHECKED BY: A. P. Long  
 PROJECT: BRITTON FERRARI  
 SHEET: 2A



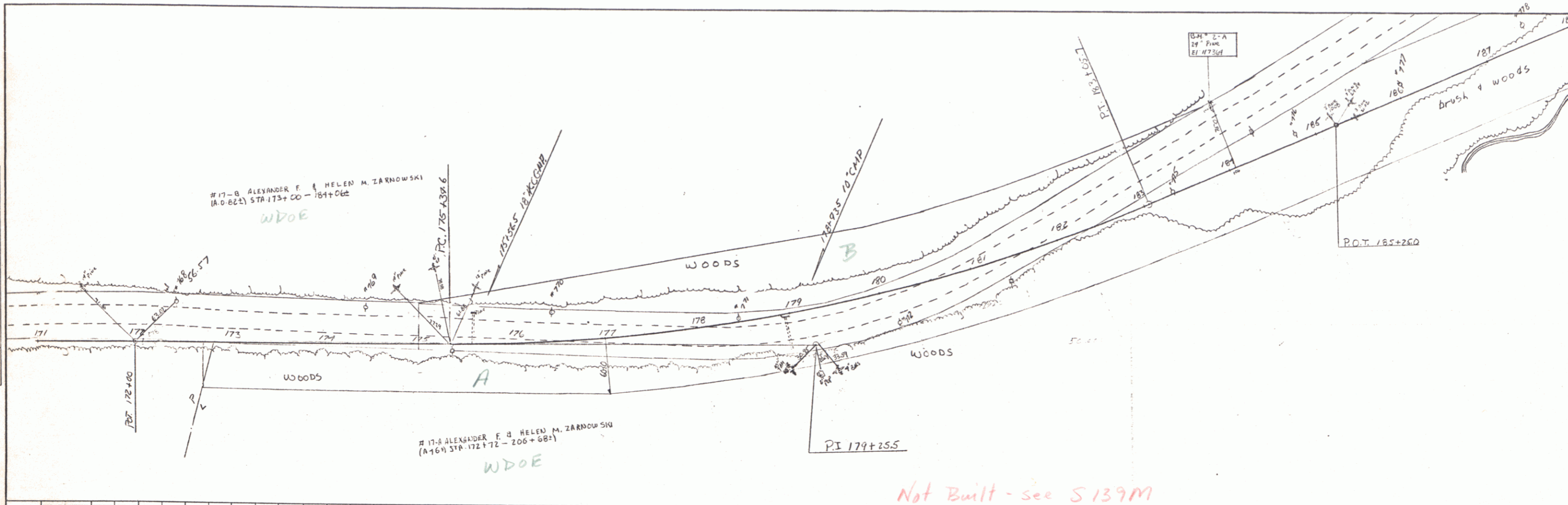
Not Built - see S139M



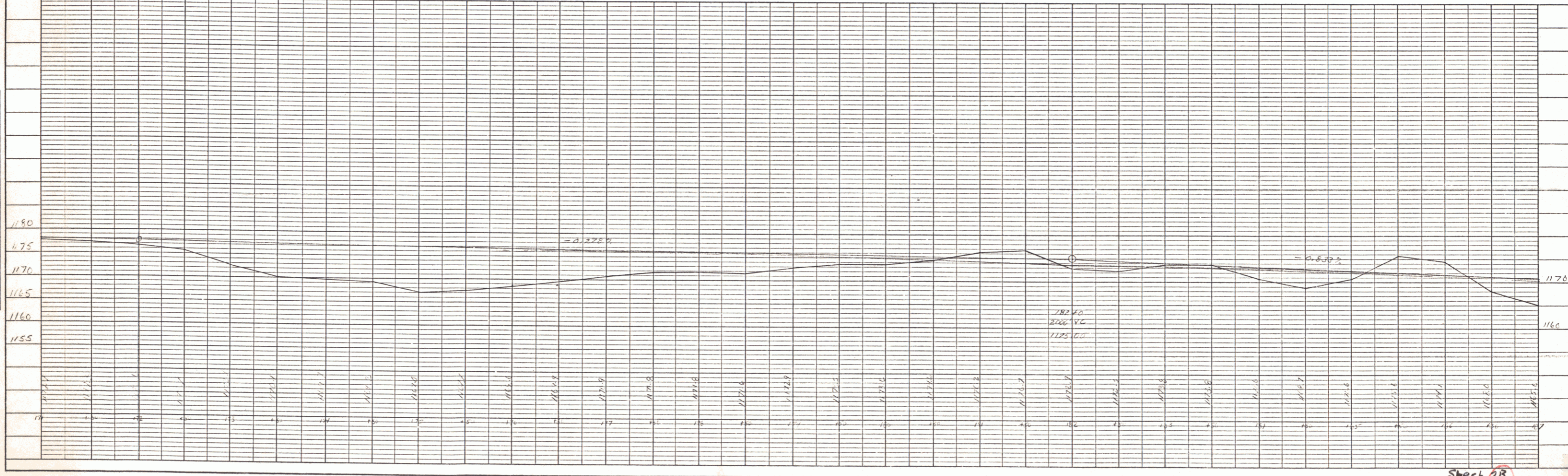
BRITTON FERRARI  
 Project F 100-139 (7)  
 Sheet 2A

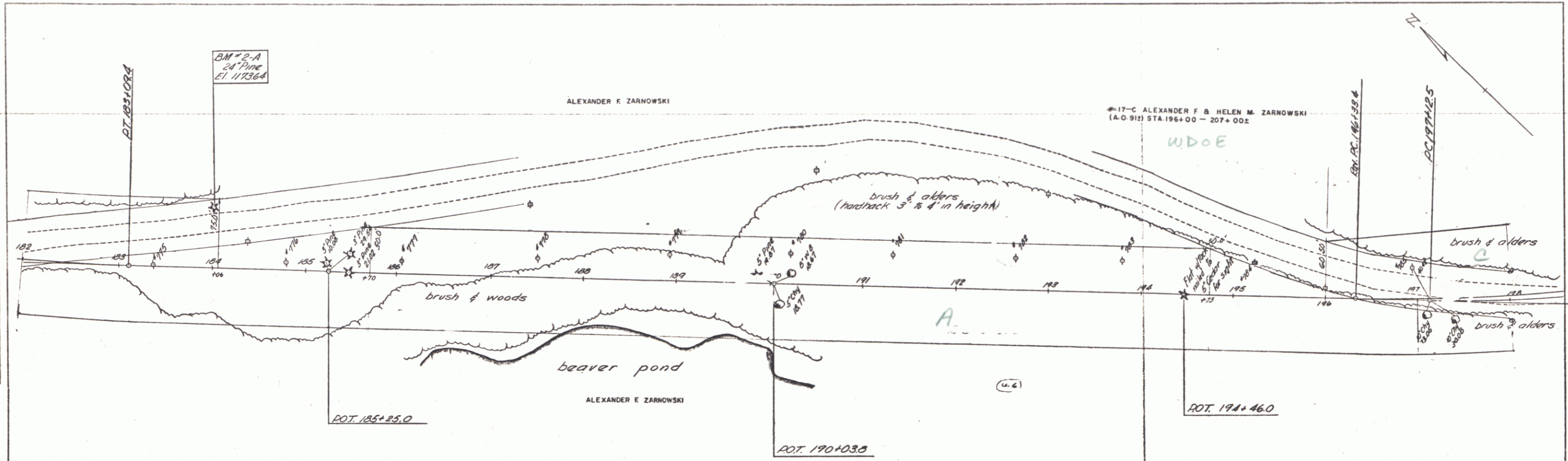
PLATE 1 - PLAN PROFILE & P & B BY STANDARD  
 PHOTO LITHOGRAPH CO. NEW YORK  
 P & B CO. NO. 348-03

PLAN  
 CHECKED BY: \_\_\_\_\_  
 DATE: \_\_\_\_\_  
 DRAWN BY: \_\_\_\_\_  
 DATE: \_\_\_\_\_  
 NOTE BOOK NO. \_\_\_\_\_  
 REVISIONS CHECKED: \_\_\_\_\_  
 NO. \_\_\_\_\_

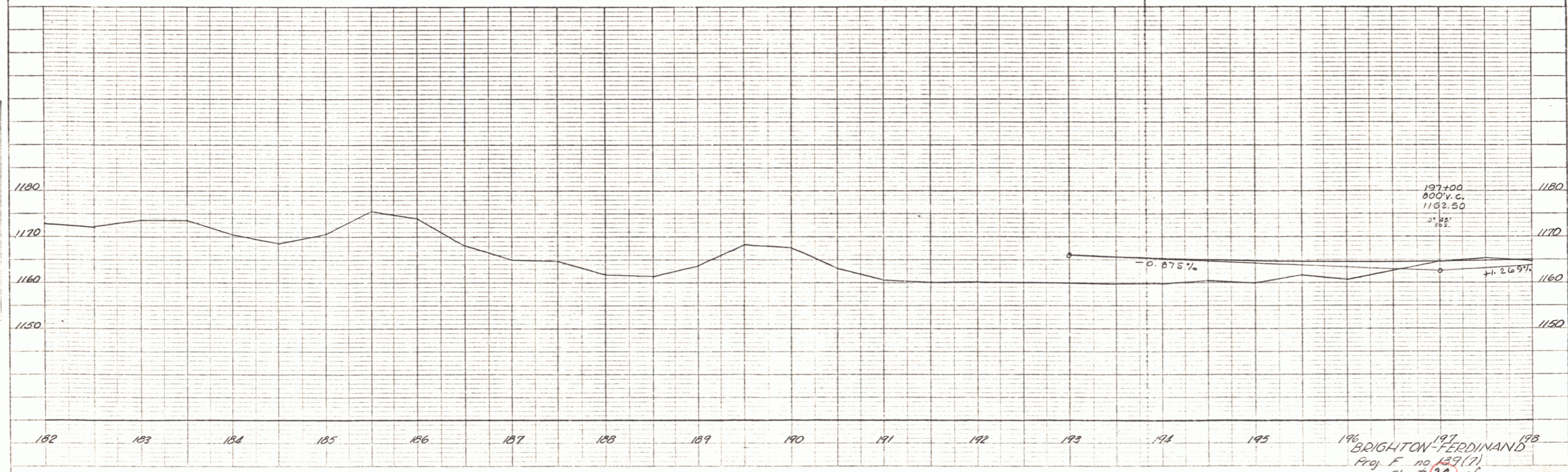


PROFILE  
 CHECKED BY: \_\_\_\_\_  
 DATE: \_\_\_\_\_  
 DRAWN BY: \_\_\_\_\_  
 DATE: \_\_\_\_\_  
 NOTE BOOK NO. \_\_\_\_\_  
 REVISIONS CHECKED: \_\_\_\_\_  
 NO. \_\_\_\_\_





Not Built - see S 139M



PLAN  
 DATE: 11-24  
 BY: A.F.Z.  
 CHECKED: H.C.H.  
 NO. 1

PROFILE  
 DATE: 11-24  
 BY: A.F.Z.  
 CHECKED: H.C.H.  
 NO. 1

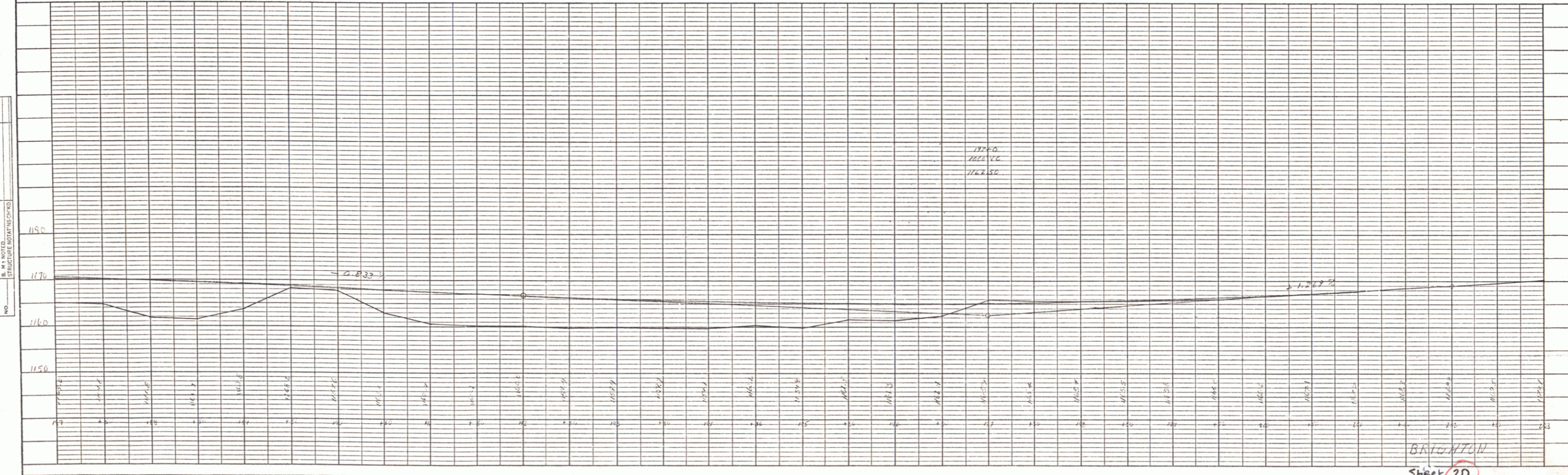
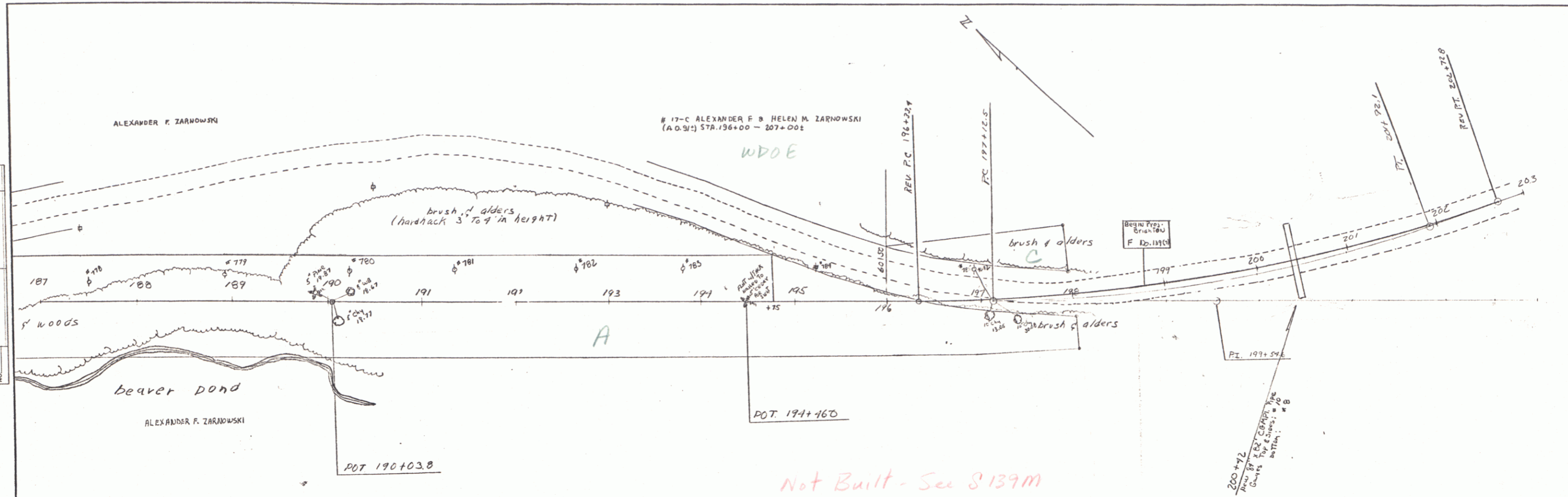
PLATE 3 - PLAN PROFILE OF PARKWAY  
 HOFFER & CO. INC., NEW YORK  
 115 N. 4TH ST., NEW YORK 14, N.Y.

196 BRIGHTON-FERDINAND  
 Proj. F no 139(7)  
 sheet 2C of 5

5

DATE: \_\_\_\_\_  
 BY: Z.A.M./A.L.Z.  
 CHECKED: \_\_\_\_\_  
 NO. \_\_\_\_\_

DATE: \_\_\_\_\_  
 BY: \_\_\_\_\_  
 CHECKED: \_\_\_\_\_  
 NO. \_\_\_\_\_



# 17-C ALEXANDER F B HELEN M ZARNOWSKI  
 (A.O.S.) STA. 196+00 - 207+00

ALEXANDER F. ZARNOWSKI

ALEXANDER F. ZARNOWSKI

Not Built - See S 139M



THREE CABLE GUARD RAIL WITH STEEL POSTS  
Sta. Lt. Rt.  
220+52 - 221+48 96' 80'  
220+60 - 221+40 18' 48'

EXCAVATION & REMOVAL OF ROAD SURFACE ON DISCONTINUED ROADWAY  
Sta. 217+00 - 217+75

REMOVAL & DISPOSAL OF PRESENT GUARD RAIL  
Sta. Lt. Rt.  
220+75 - 220+91 16' 16'  
221+06 - 221+22 16' 16'

CONSTRUCT DRIVES  
226+37 Lt.  
226+08 Lt.

STEEL GUIDE POSTS  
Sta. Lt. Rt.  
225+05  
227+50

OWNER TO REMOVE BY JUNE 1, 1958  
RESERVE CESSPOOL

REPAIR GUARD RAIL  
221+50 - 221+24

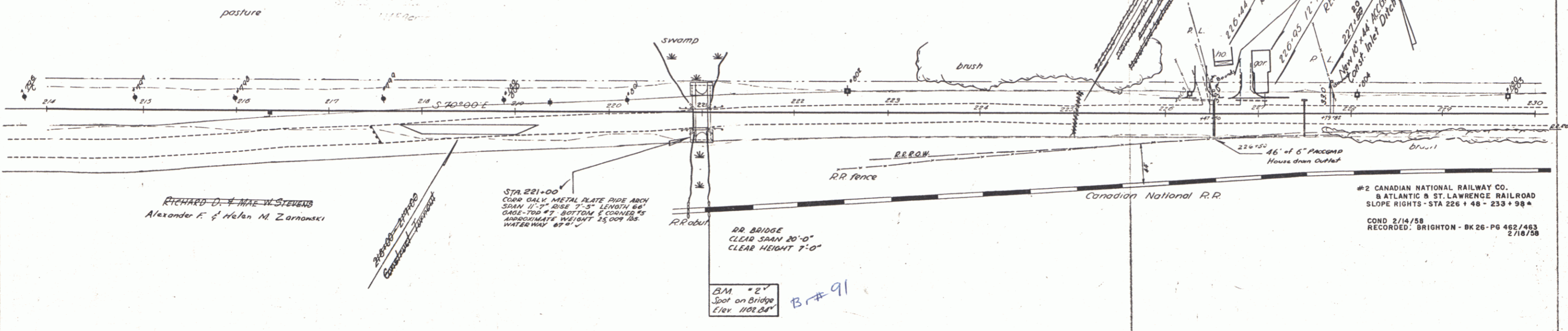
Alexander F. & Helen M. Zarnowski  
RICHARD D. & MAE W. STEVENS

CONC. SLAB BRIDGE (very poor cond.)  
CLEAR SPAN 12'-0"  
CLEAR HEIGHT 3'-0" AT ROADWAY 20'-0"

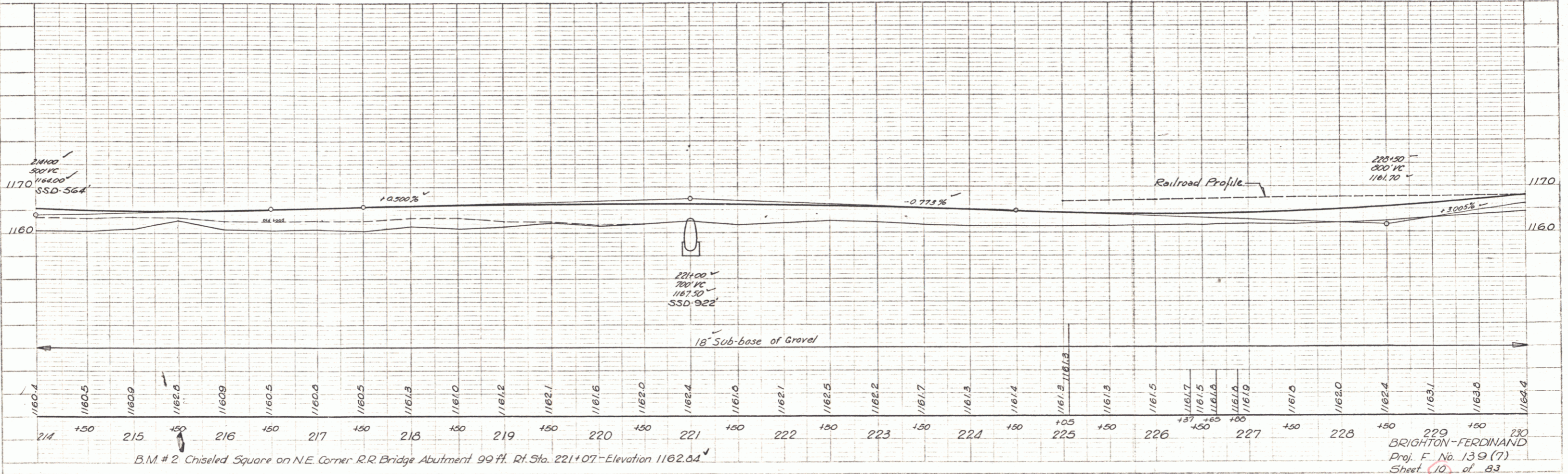
#3 GOLDE M. B. CURTIS I. COVILLE  
(1287 SQ. FT.) STA 226+47-227+82  
BUILDING STA 227+05  
OCD 3/14/58  
RECORDED BRIGHTON-BK26- PG 482/483-3/25/58

STATE - CONSTRUCT FLAT LAWN SLOPES  
#4 STELLA I. COVILLE  
(A 0.20) STA 227+79-234+201  
INLET DITCH - STA 232+55  
WDOE 4/3/58  
RECORDED BRIGHTON-BK26 PG 486/487-4/8/58

PLAN  
DATE 8/27/57  
BY J. W. BROWN  
CHECKED BY J. W. BROWN  
SCALE 1" = 40'



SECTION  
DATE 8-27-57  
BY J. W. BROWN  
CHECKED BY J. W. BROWN  
SCALE 1" = 40'



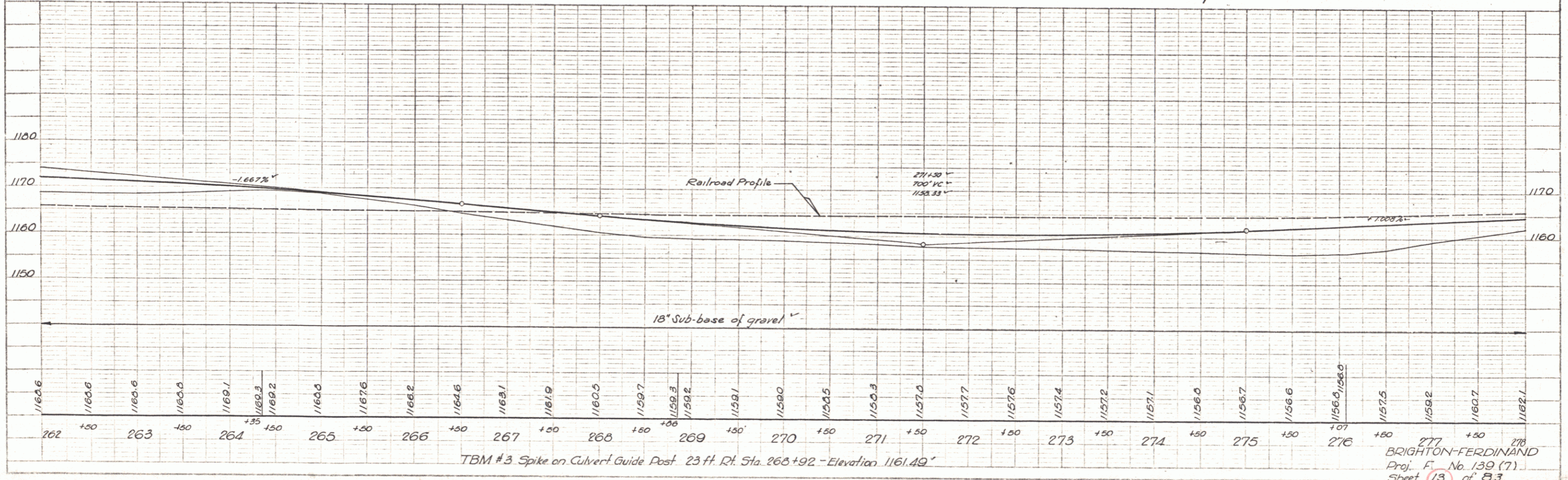
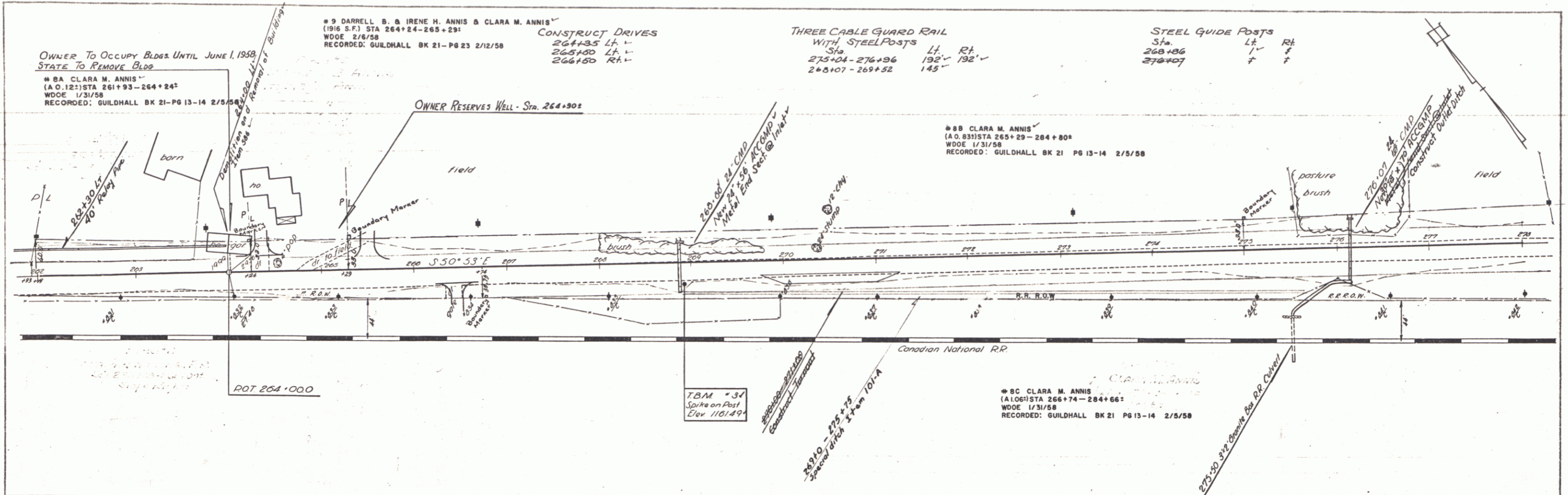
B.M. #2 Chiseled Square on NE Corner R.R. Bridge Abutment 99 ft. Rt. Sta. 221+07 - Elevation 1162.64

BRIGHTON-FERDINAND  
Proj. F. No. 139 (7)  
Sheet 10 of 83

PLATE 11 - PROFILE BY J. W. BROWN  
REVISED BY J. W. BROWN  
DATE 8/27/57







PLAN  
SCALE 1" = 100'

Vertical Curve  
40' Parabolic  
2.97  
2.57

THREE CABLE GUARD RAIL WITH STEEL POSTS  
Sta. 288+10-290+75 Lt. Rt. 25'

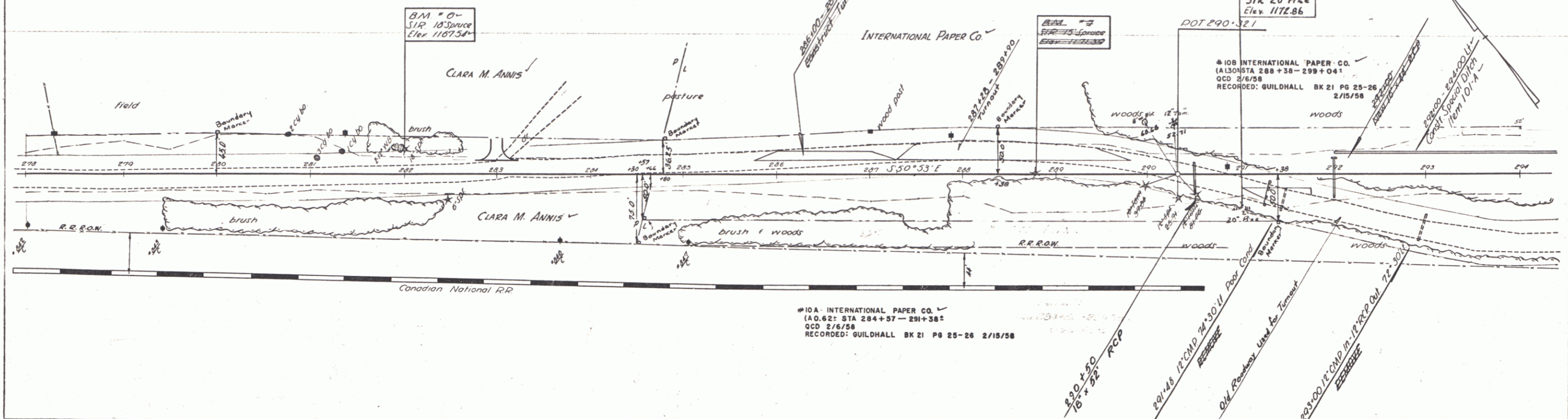
STEEL GUIDE POSTS  
Sta. Lt. Rt.  
288+00 1 1  
290+50 1 1  
293+00 1 1  
296+17 2 2

CONSTRUCT DRIVE  
283+00 E

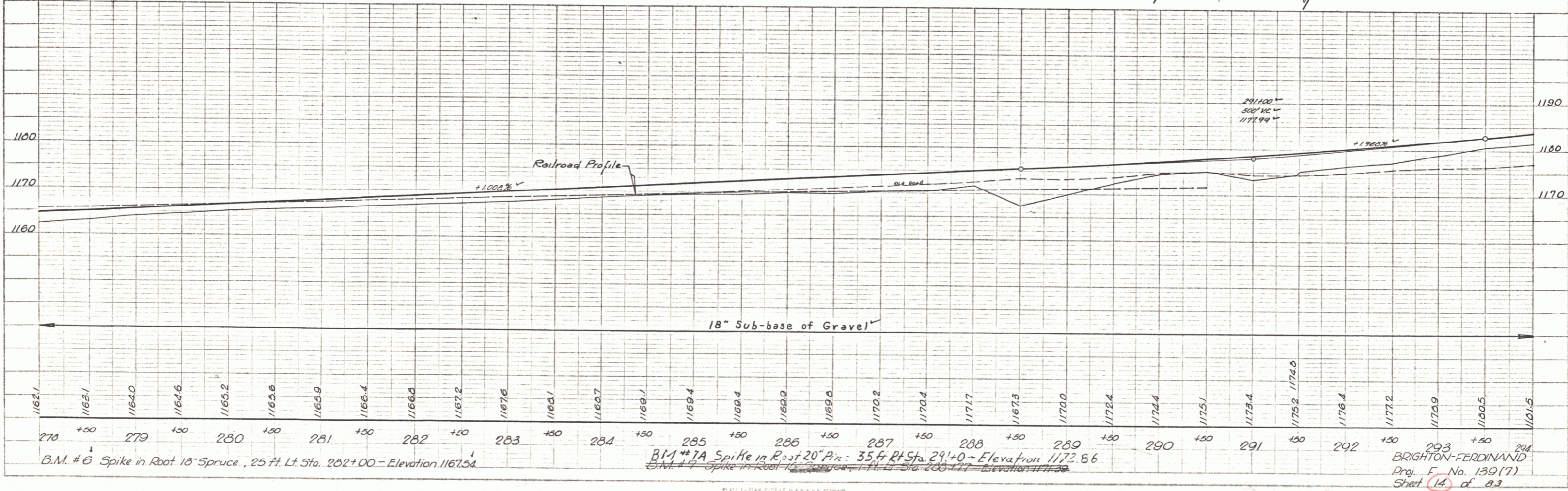
EXCAVATION & REMOVAL OF SURFACE ON DISCONTINUED ROADWAYS  
284+00-284+35 Lt.  
287+00-288+00 Lt.  
291+00-294+00 Rt.

PLANK GUARD RAIL  
Sta. 291+25-291+45 Lt. Rt. 24'

PLAN  
DATE: 2/6/58  
BY: [Signature]  
CHECKED: [Signature]



PROFILE  
DATE: 2/6/58  
BY: [Signature]  
CHECKED: [Signature]



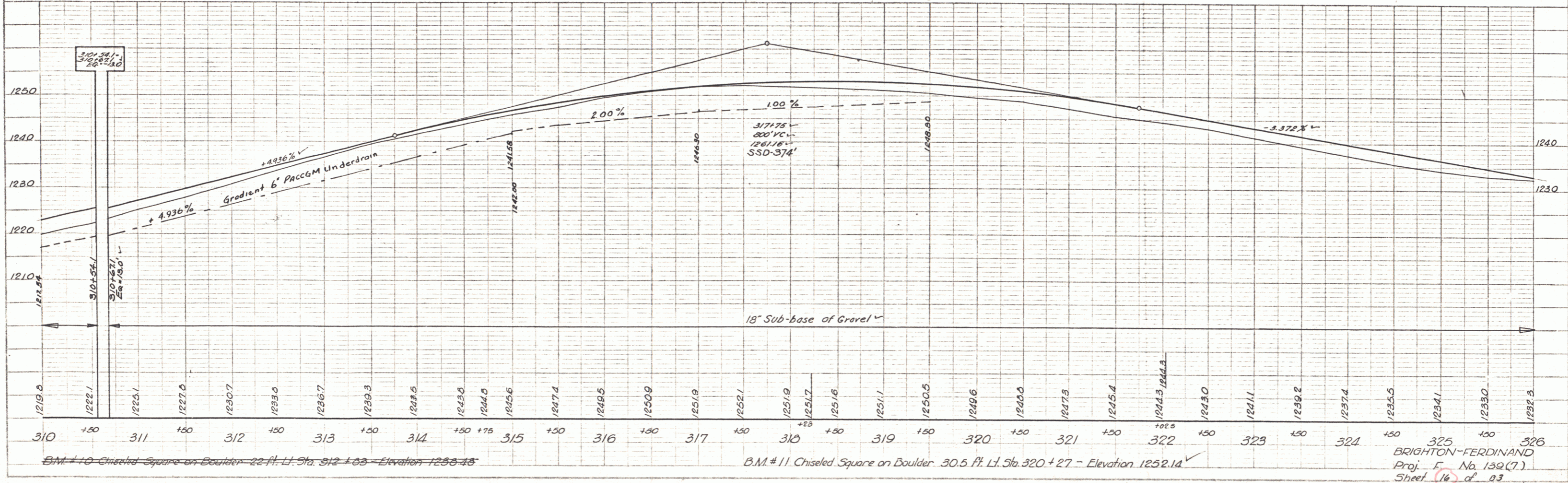
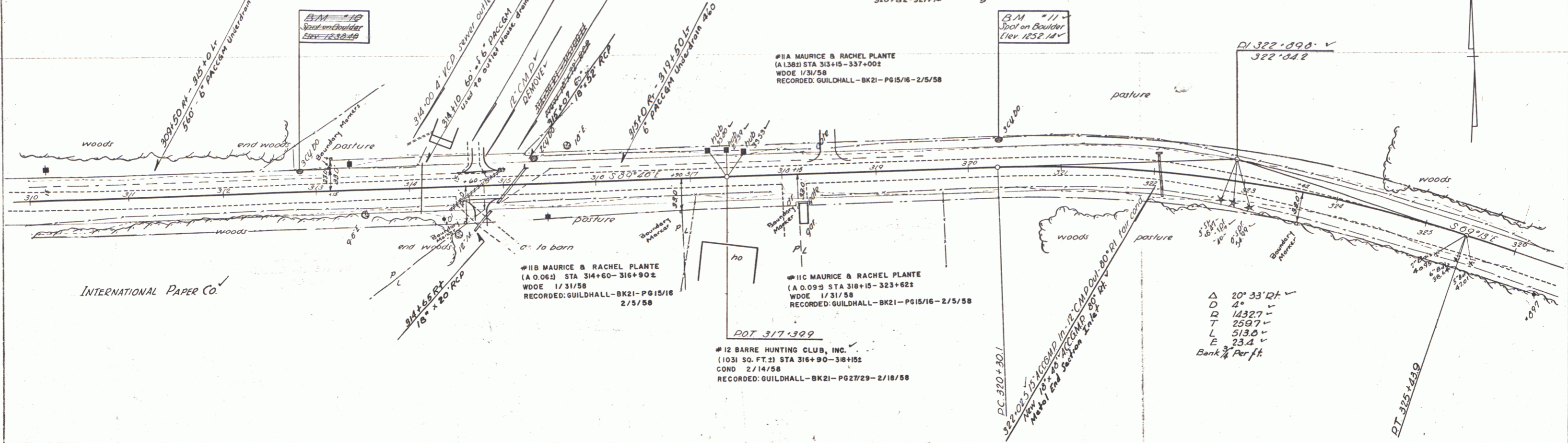
BRIGHTON-FERDINAND  
Proj. No. 139(7)  
Sheet 14 of 23



THREE CABLE GUARD RAIL WITH STEEL POSTS  
Sta 310+00 - 310+96

CONSTRUCT DRIVES  
314+75 Lt  
314+75 Rt  
318+10 Lt  
318+50 Lt

STEEL GUIDE POSTS  
Sta Lt Rt  
314+96 1 1  
316+00 1 1  
322+05 1 1  
320+82-321+74 5



PLAN  
DATE: 1/31/58  
BY: [Signature]  
CHECKED: [Signature]

Checked by: [Signature]  
Date: 1/31/58  
Project: Our No. 10

PLATE 1 - 1/31/58  
BRIGHTON-FERDINAND  
Proj. No. 132(7)  
Sheet 16 of 23

BRIGHTON-FERDINAND  
Proj. No. 132(7)  
Sheet 16 of 23

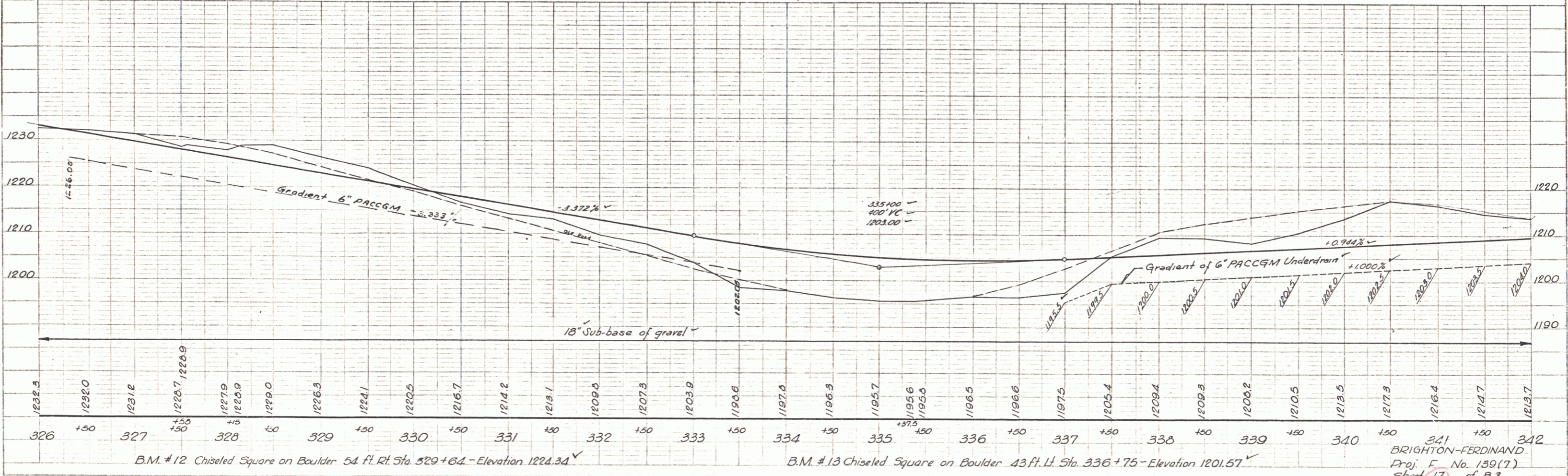
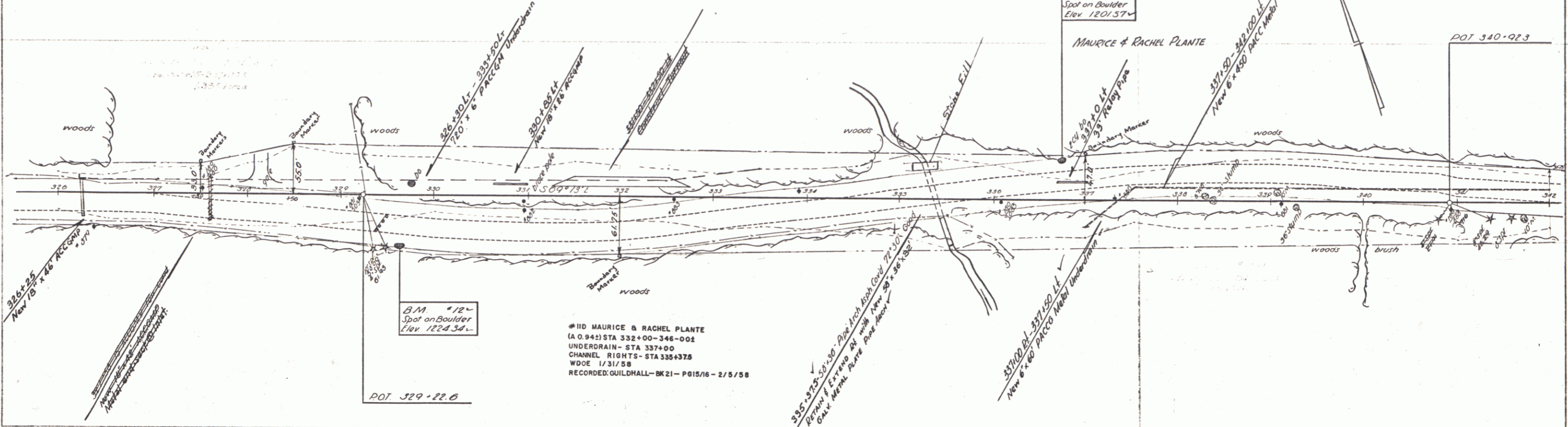
**THREE CABLE GUARD RAIL WITH STEEL POSTS**  
 Sta. 334+94 Lt. Rt. 426' 467'  
 332+25-337+81 330 330  
 333+20-336+40 330 330  
 74- 53

**CONSTRUCT DRIVE**  
 328+15-328  
 328+15 Lt. 328+15 Rt.  
 330+50 Lt. Rt.  
 330+50 Lt. Rt.  
 337+00 Lt.

**EXCAVATION & REMOVAL OF SURFACE ON DISCONTINUED ROADWAYS**  
 328+75-328+25 Rt. Lt.

**PLANK GUARD RAIL**  
 Sta. 329+50 Lt. Rt. 28'

**STEEL GUIDE POSTS**  
 Sta. 326+25 Lt. Rt. 1'-1'  
 337+00 1'-1'



B.M. #12 Chiseled Square on Boulder 54 ft. Rt. Sta. 329+64 - Elevation 1224.34

B.M. #13 Chiseled Square on Boulder 43 ft. Lt. Sta. 336+75 - Elevation 1201.57

BRIGHTON-FERDINAND  
 Proj. F. No. 139(7)  
 Sheet 17 of 83

PLATE 1 - PLAN, PROFILE & P&E STATIONS  
 REVISIONS & DATE SHEET 10/10/00

THREE CABLE GUARD RAIL WITH STEEL POSTS  
 353+52 Lt Rt  
 364+00-357+48 368' 368' 402'  
 357+10-358+30 130'

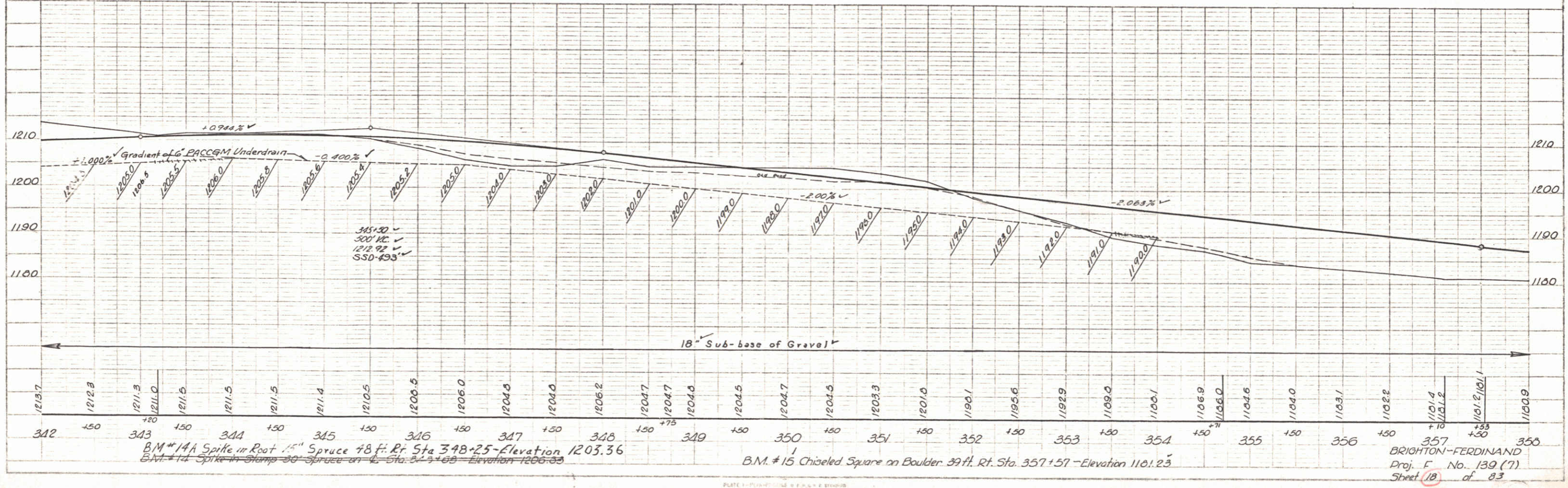
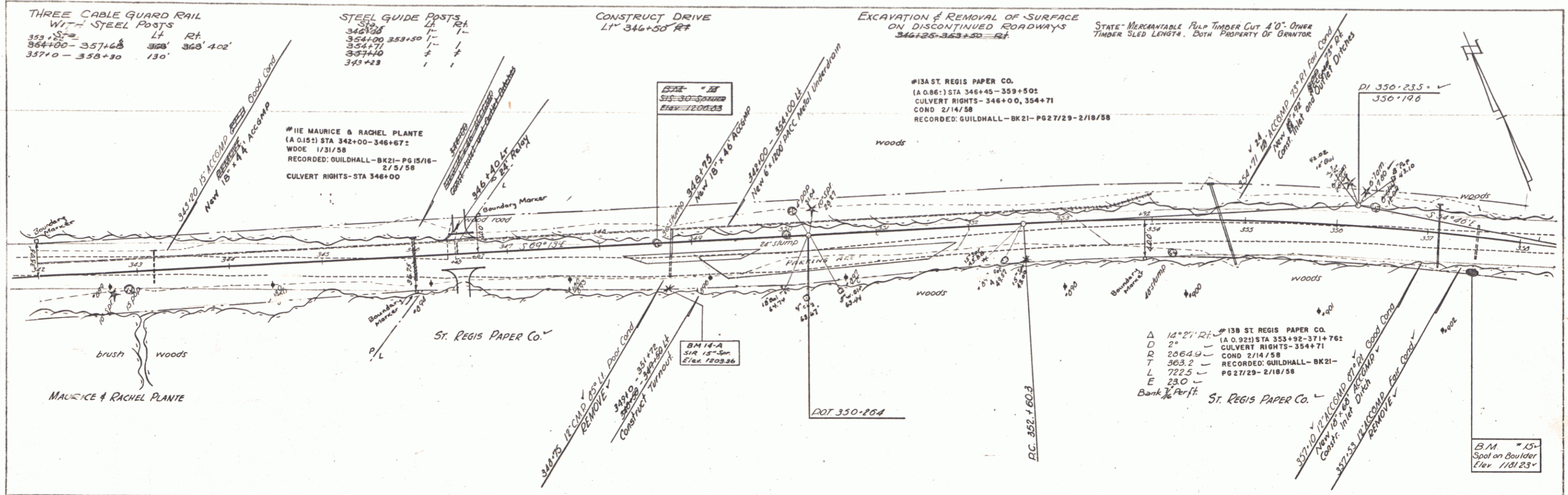
STEEL GUIDE POSTS  
 346+00 Lt Rt  
 354+00 353+50 1- 1-  
 354+71 357+10 1- 1-  
 343+23 1- 1-

CONSTRUCT DRIVE  
 LT 346+50 RT

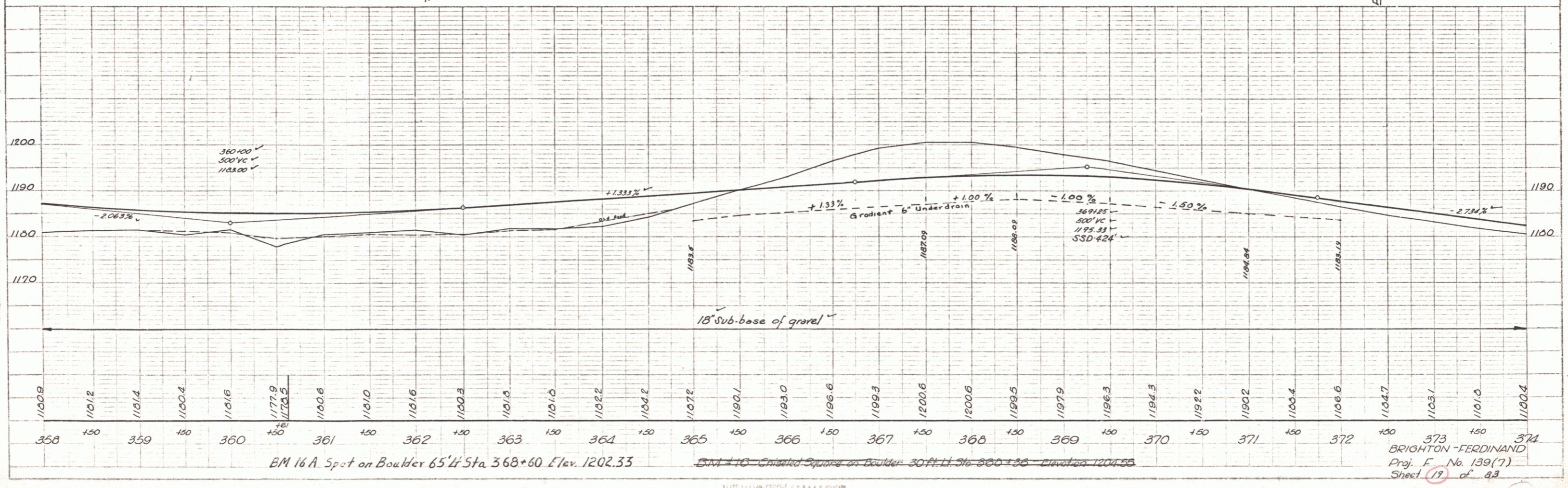
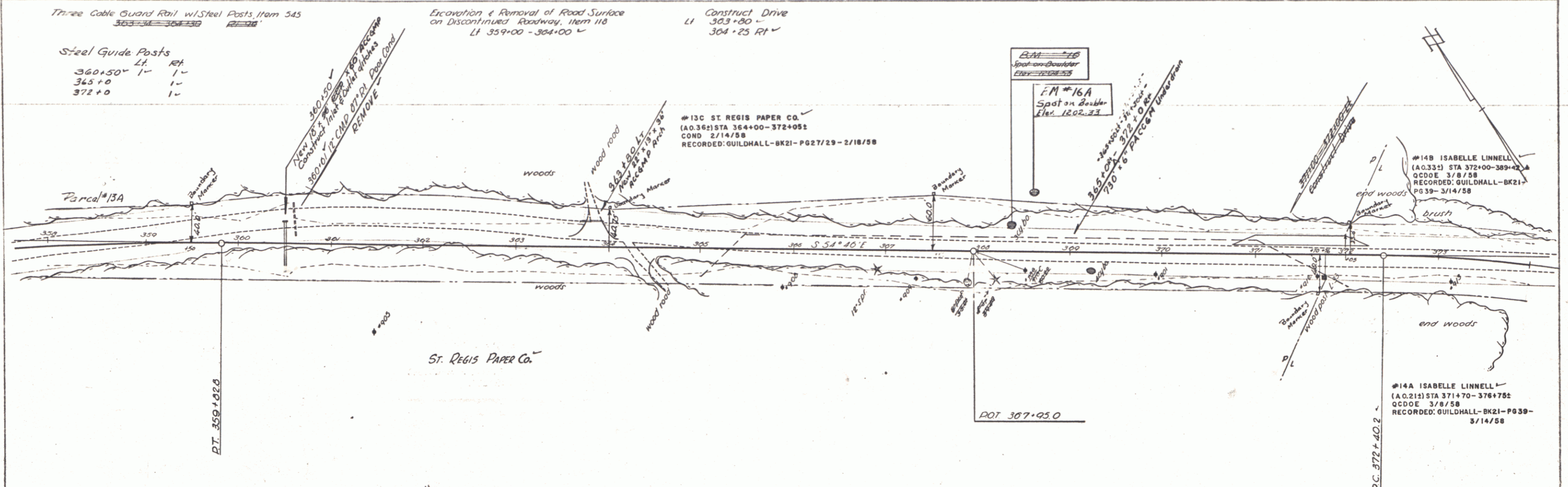
EXCAVATION & REMOVAL OF SURFACE ON DISCONTINUED ROADWAYS  
 346+25-348+50 RT

STATE-MERCHANTABLE PLY TIMBER CUT 4'0" - DRIVE  
 TIMBER SLED LENGTH, BOTH PROPERTY OF GRANTOR

PLAN  
 DATE BOOK  
 1/27/58  
 1/27/58



Vertical Curve Data:  
 1210  
 1200  
 1190  
 1180



PLAN  
 DATE BOOK  
 BY  
 CHECKED BY

Checked by  
 Date  
 M.S.  
 Project No.

ELITE 11-1 PLAN PROFILE  
 K&E ENGINEERS  
 1000 N. 10TH ST., SUITE 200  
 DENVER, CO 80202

BRIGHTON-FERDINAND  
 Proj. No. 139(7)  
 Sheet 19 of 83



