

THREE CABLE GUARD RAIL WITH STEEL POSTS
Sta. Lt. Rt.
220+52 - 221+48 96' 80'
220+60 - 221+40 98' 48'

EXCAVATION & REMOVAL OF ROAD SURFACE ON DISCONTINUED ROADWAY
Sta. 217+00 - 217+75

REMOVAL & DISPOSAL OF PRESENT GUARD RAIL
Sta. Lt. Rt.
220+75 - 220+91 16' 16'
221+06 - 221+22 16' 16'

CONSTRUCT DRIVES
226+37 Lt.
226+08 Lt.

STEEL GUIDE POSTS
Sta. Lt. Rt.
225+05 1' 1'
227+50 1' 1'

OWNER TO REMOVE BY JUNE 1, 1958
RESERVE CESSPOOL

REPAIR GUARD RAIL
221+50 - 221+24

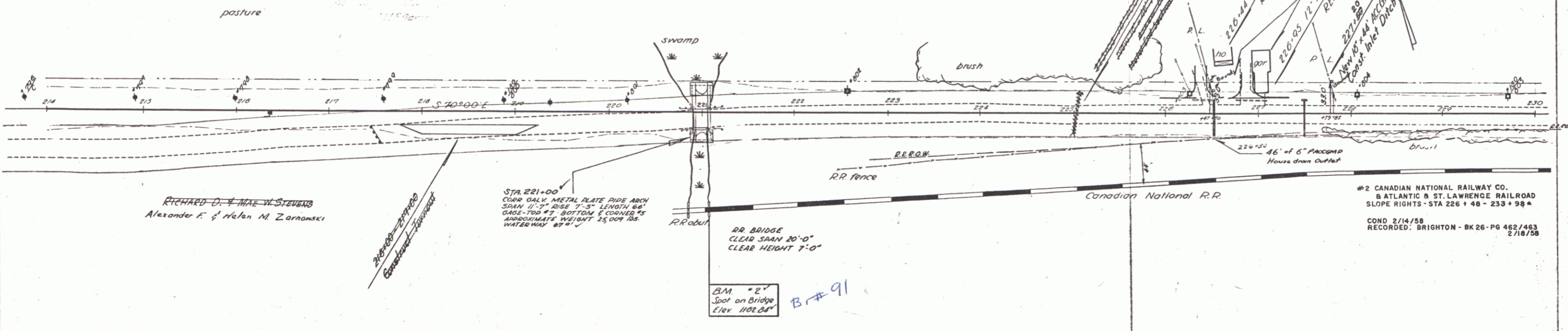
Alexander F. & Helen M. Zarnowski
RICHARD D. & MAE W. STEVENS

CONC. SLAB BRIDGE (very poor cond.)
CLEAR SPAN 12'-0"
CLEAR HEIGHT 3'-0" AT ROADWAY 20'-0"

#3 GOLDE M. B. CURTIS I. COVILLE
(1287 SQ. FT.) STA 226+47-227+82
BUILDING STA 227+05
OCD 3/14/58
RECORDED BRIGHTON-BK26-PG 482/483-3/25/58

STATE-CONSTRUCT FLAT LAWN SLOPES
#4 STELLA I. COVILLE
(A 0.20) STA 227+79-234+201
INLET DITCH - STA 232+55
WDOE 4/3/58
RECORDED BRIGHTON-BK26-PG 486/487-4/8/58

PLAN
DATE 8/27/57
BY J. W. BROWN
CHECKED BY J. W. BROWN
SCALE 1" = 40'



SECTION
DATE 8-27-57
BY J. W. BROWN
CHECKED BY J. W. BROWN
SCALE 1" = 40'

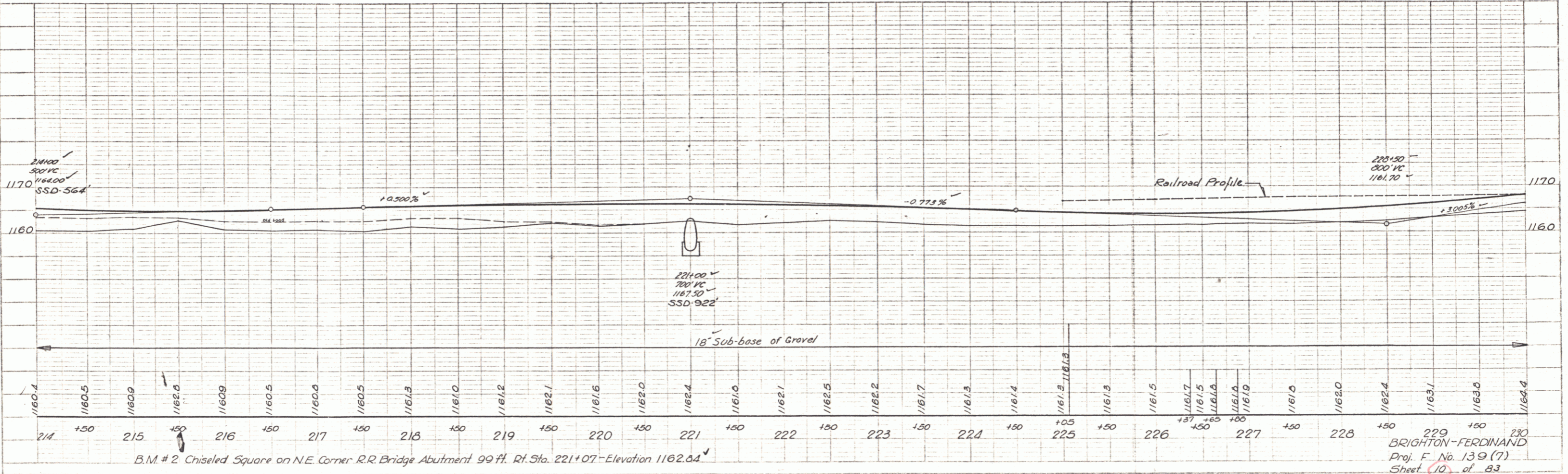


PLATE 11-1125 (2) SCALE 1" = 40' & 1" = 100'

BRIGHTON-FERDINAND
Proj. F. No. 139 (7)
Sheet 10 of 83