

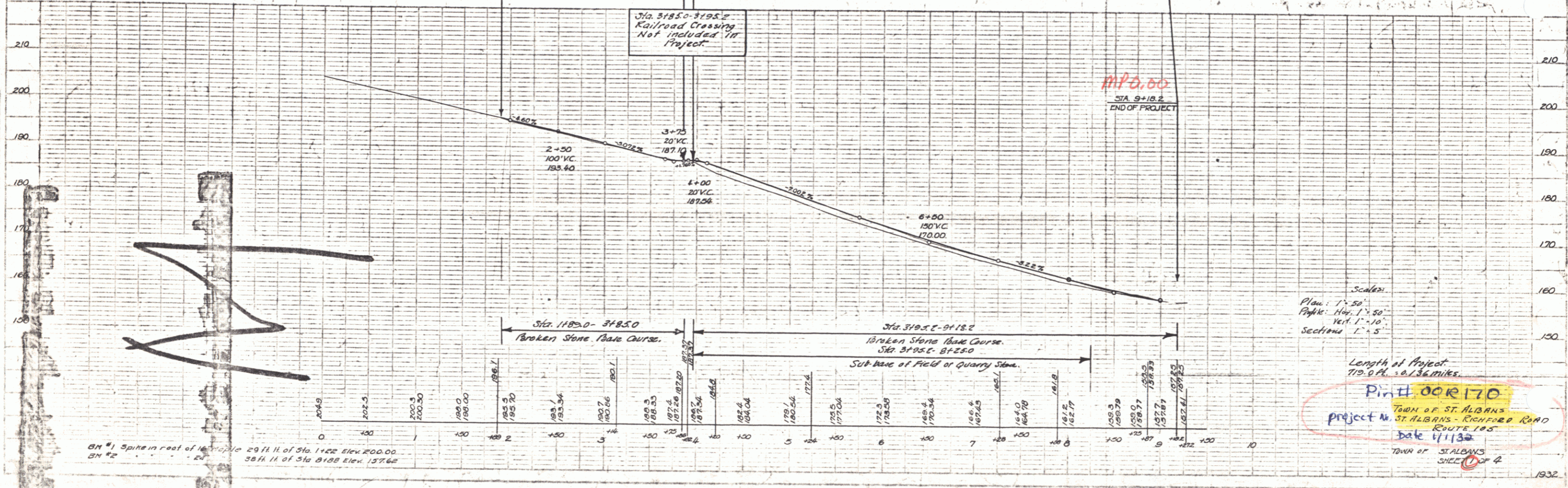
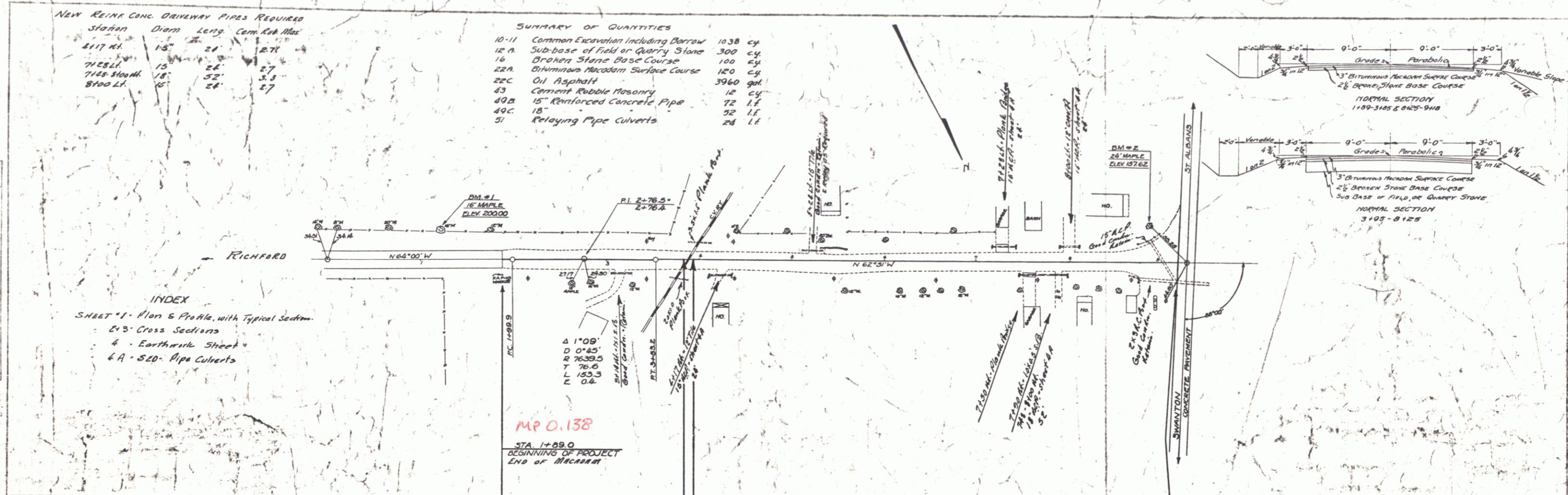
NEW REIN. CONC. DRIVEWAY PIPES REQUIRED

Station	Diarm	Len ^g	Cem. Reb. Max
217 H.	15"	24'	2.71
712 S.L.	15"	24'	2.71
7122-3104 H.	18"	52'	3.3
8100 L.	15"	24'	2.7

SUMMARY OF QUANTITIES

10-11	Common Excavation including Borrow	1038	cy
12 A	Sub-base of Field or Quarry Stone	300	cy
16	Broken Stone Base Course	120	cy
22A	Bituminous Macadam Surface Course	3960	gal
22C	Oil Asphalt	12	cy
43	Cement Rubble Masonry	72	lf
49A	15" Reinforced Concrete Pipe	52	lf
49C	18"	24	lf
51	Relaying Pipe Culverts	24	lf

INDEX
 SHEET 1 - Plan & Profile, with Typical Sections
 2-3 - Cross Sections
 4 - Earthwork Sheet
 4A - S20 - Pipe Culverts



Scales:
 Plan: 1" = 50'
 Profile: Hor. 1" = 50', Vert. 1" = 10'
 Sections: 1" = 5'

Length of Project
 712.6 ft. = 0.136 miles

Pin 100R170
 TOWN OF ST. ALBANS
 PROJECT N. ST. ALBANS - RICHFORD ROAD
 ROUTE 105
 DATE 4/1/32
 TOWN OF ST. ALBANS
 SHEET 2 OF 2

PLAN
 SHEET NO. 100R170
 DATE 4/1/32
 SCALE 1" = 50'

PROFILE
 SHEET NO. 100R170
 DATE 4/1/32
 SCALE 1" = 10'

ON #1 Spine in rear of 100R170 Sta. 1122 Elev. 200.00
 ON #2 " " " " Sta. 1128 Elev. 137.62

1932