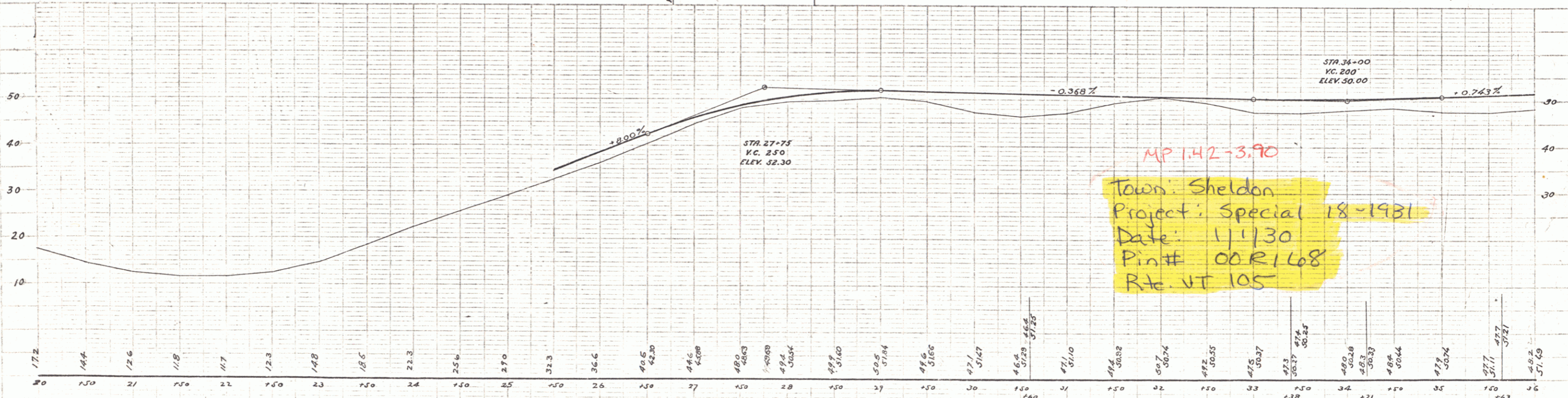
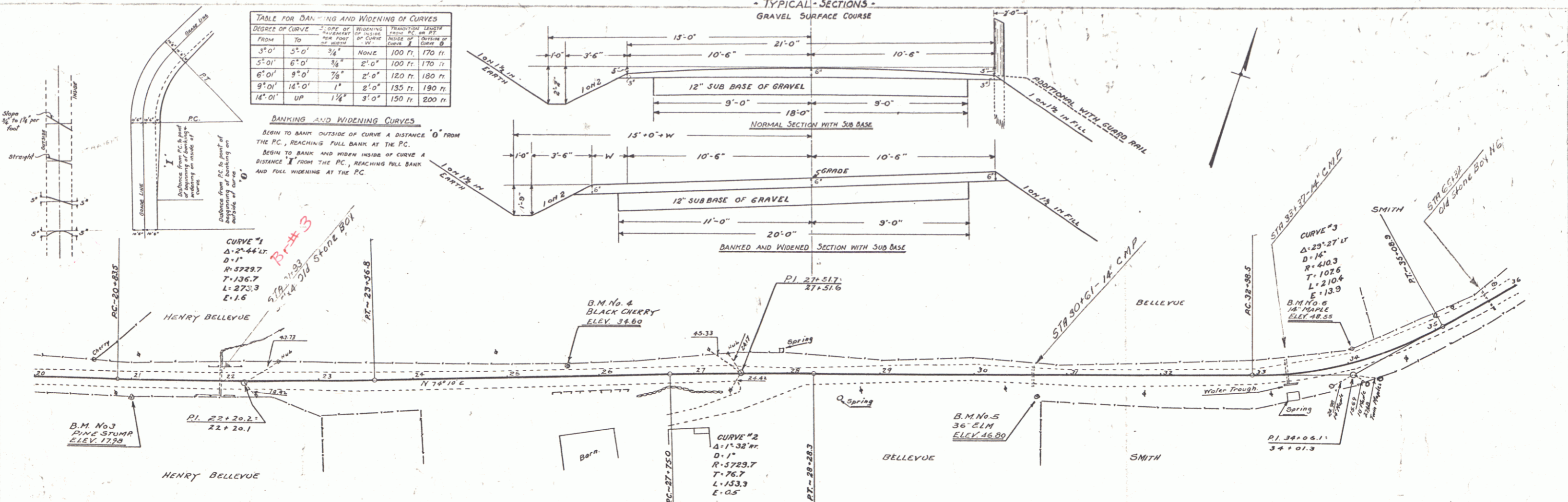
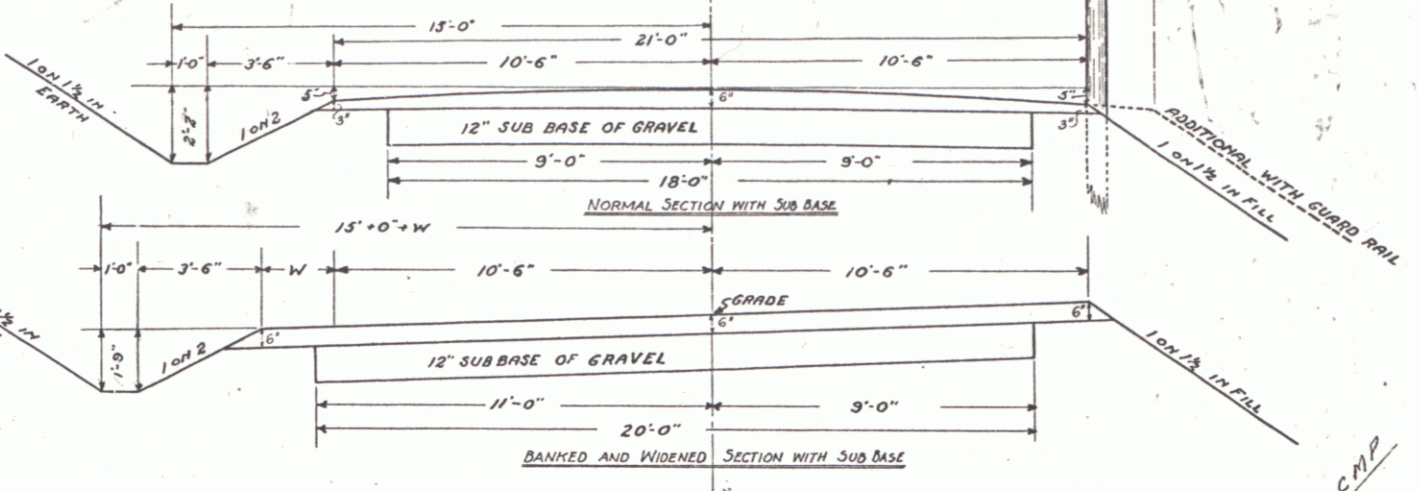


DEGREE OF CURVE	OFF-SET OF THE FULL WIDTH OF CURVE	TRANSITION LENGTH
3°-0'	3/4"	100 ft.
5°-0'	3/8"	100 ft.
6°-0'	3/8"	120 ft.
9°-0'	7/8"	135 ft.
12°-0'	1"	150 ft.
18°-0'	1 1/4"	200 ft.

BANKING AND WIDENING CURVES
 BEGIN TO BANK OUTSIDE OF CURVE A DISTANCE 'O' FROM THE P.C., REACHING FULL BANK AT THE P.C.
 BEGIN TO BANK AND WIDEN INSIDE OF CURVE A DISTANCE 'I' FROM THE P.C., REACHING FULL BANK AND FULL WIDENING AT THE P.C.

TYPICAL SECTIONS - GRAVEL SURFACE COURSE



MP 1.42-3.90
 Town: Sheldon
 Project: Special 18-1931
 Date: 1/1/30
 Pin# 00R168
 Rte. VT 105

- B.M. No. 3. Spike in Stump Rl of Sta. 21100 Elev. 17.98
- " " 4. " " Black Cherry Lf. of Sta. 25162 Elev. 34.60
- " " 5. " " 36" Elm. Rl. of Sta. 30163 Elev. 46.80
- " " 6. " " 14" Maple Lf. of " 34107 " 48.55