

Sta.	Sta	Lt
258+70	260+06	9
App. Rd.	260+18	8
260+38	261+00	8
Old Rd.	260+50	3

5' Cable Guard Rail w/ Steel Posts	RI
251+26	LT 36
255+00	254+38
251+00	254+32
259+00	259+40
260+20	261+00

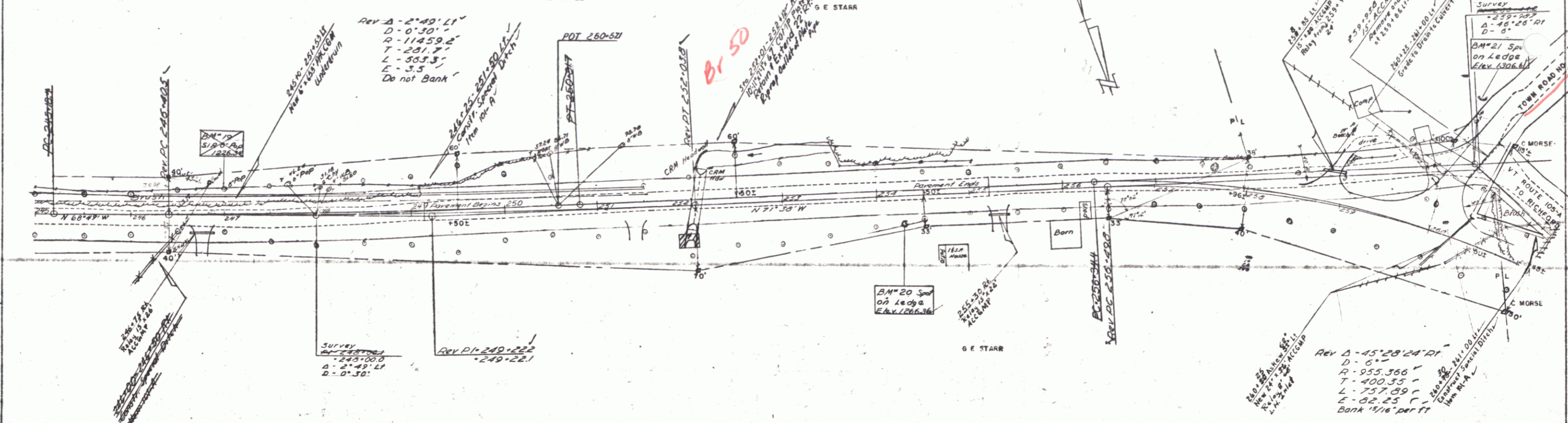
Construct Drives
253+00 R1N30'
246+75 RL'
251+40 RL'
258+80 Lt'
260+65 Lt'

Removal of Building
256+20 RL V

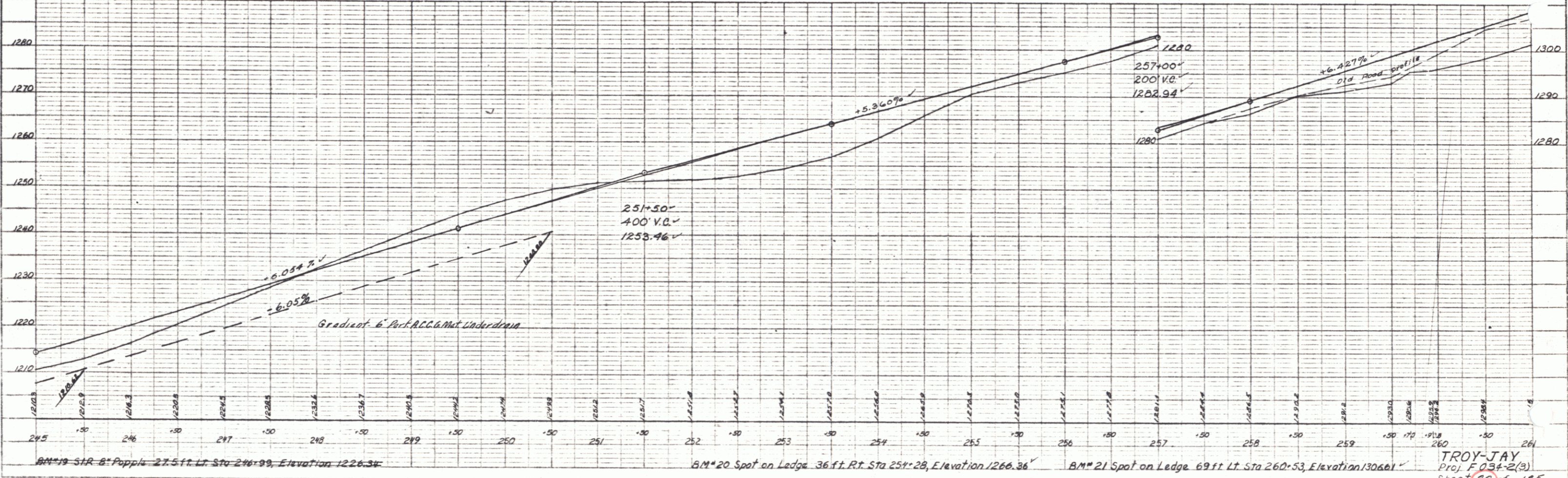
Construct Approach
259+00 Lt 6.2%

JULIA A & LELAND L BURNAP

PLAN
DATE: 8-27-57
BY: JAB



PROFILE
DATE: 8-27-57
BY: JAB



BM#19 STR 8" Popple 27.5 ft Lt Sta 246+99, Elevation 1226.34'

BM#20 Spot on Ledge 36 ft Rt Sta 251+28, Elevation 1266.36'

BM#21 Spot on Ledge 69 ft Lt Sta 260+53, Elevation 1306.61'

TROY-JAY
Proj. F 034-2(3)
Sheet 20 of 185