

INDEX OF SHEETS

SHEET NO. 1	TITLE PAGE
2	TYPICAL CROSS-SECTION OF IMPROVEMENT
3	BANKING AND WIDENING TABLES
4-15	PLAN AND PROFILE
16	Details of Abutments 1 & 2 Slab Bridge @ Sta. 409+53.
17	Details of Superstructure
18	Standard Structure Sheet
19	SB 5C Curb & Posts
20	SB 20 Details R (Score Marks) E & J
21	S-28 Pipe Culverts
22	S-30 Guard Rail, Timber Curb
23	S-30-A Standard Underdrain
24	S-31 Boundary Markers
25	S-40 Barricades, Signs & Lights
26	S-41 Rounding of Slopes
27	SC-2-4 Box Culverts SCW-2-3 Wings for Box Culverts
28-143	Cross Sections

STATE OF VERMONT
STATE HIGHWAY DEPARTMENT

PLAN AND PROFILE OF PROPOSED
STATE HIGHWAY
FEDERAL AID PROJECT

JAY MTN.
TOWN OF JAY

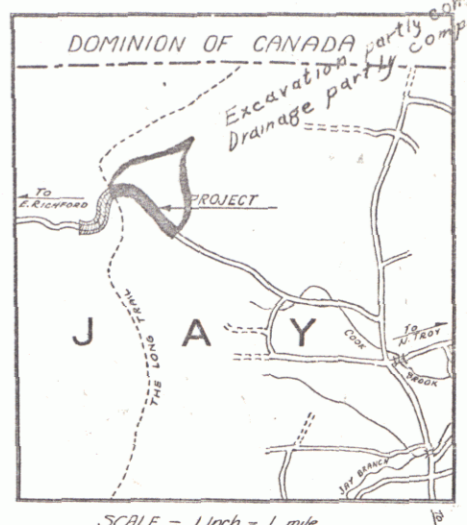
N. TROY-JAY MTN.-ERICHFORD ROAD

BEGINNING AT A POINT ON THE STATE AID ROAD BETWEEN N. TROY AND E. RICHFORD VIA OF JAY MTN., SAID POINT BEING 4.34 MILES WEST OF THE TROY-JAY TOWN LINE AND EXTENDING WESTERLY 1.454 MILES

LENGTH OF PROJECT 7680.4 FT. = 1.454 MILES

RECORD PLANS by G.A. Pierce

FED. ROAD DIST. NO.	STATE	FED. AID PROJ. NO.	FISCAL YEAR	SHEET NO.	TOTAL SHEETS
9	Vt.	137C(1)	1942	1	143



Standard Structure Sheets Approved by the Chief Engineer.

April 26, 1941.
Aug. 15, 1939.
March 19, 1941.
July 25, 1939.

TO BE RETURNED TO R.O.W. DIVISION
TOWN OF JAY
PERMANENT
OWN FILE
RIGHT-OF-WAY DIVISION

PRODUCTION	DATE	BY
NUMBER	DATE	BY
TITLE	DATE	BY
CONTRACTOR	DATE	BY
LOCATION	DATE	BY

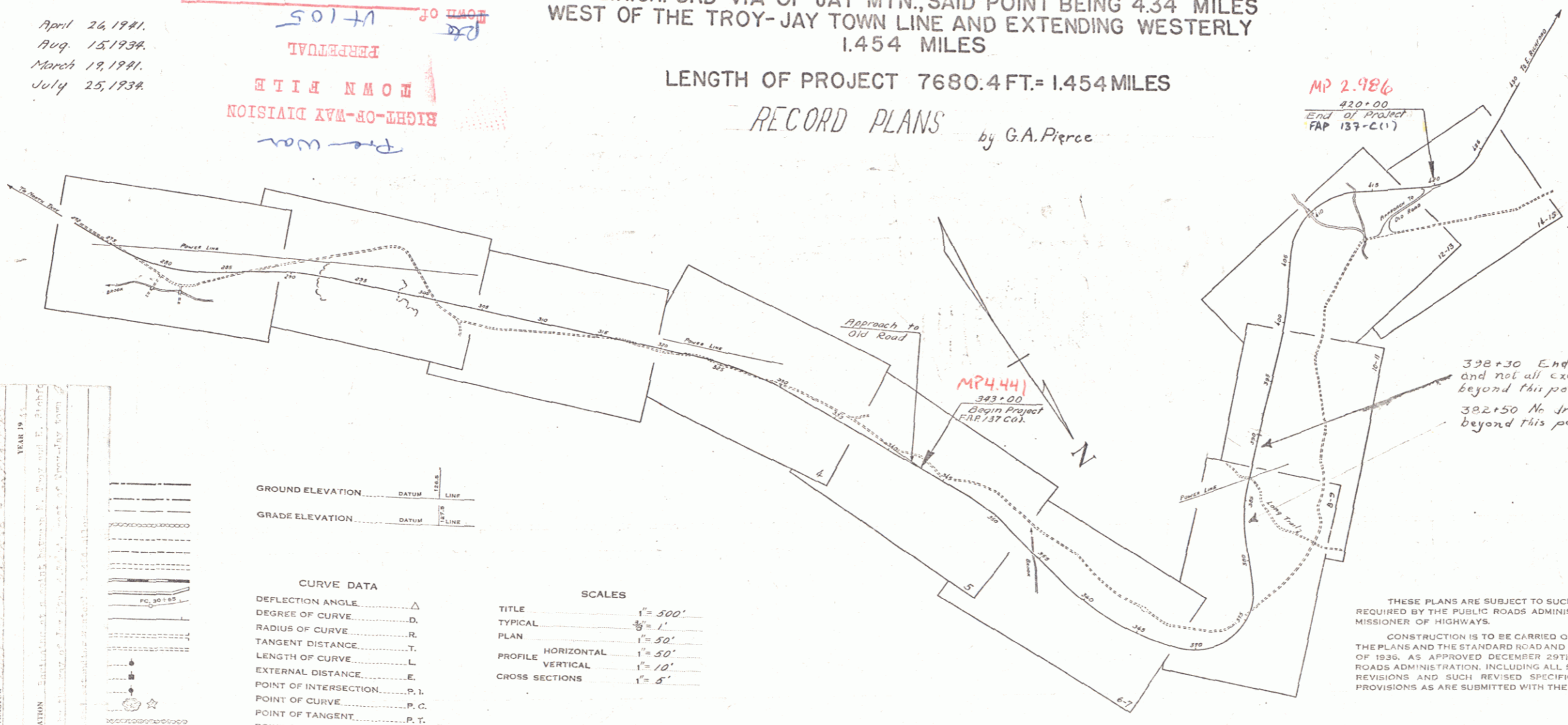
GROUND ELEVATION	DATUM	LINE
GRADE ELEVATION	DATUM	LINE

CURVE DATA

DEFLECTION ANGLE	Δ
DEGREE OF CURVE	D
RADIUS OF CURVE	R
TANGENT DISTANCE	T
LENGTH OF CURVE	L
EXTERNAL DISTANCE	E
POINT OF INTERSECTION	P. I.
POINT OF CURVE	P. C.
POINT OF TANGENT	P. T.
POINT ON TANGENT	P. O. T.

SCALES

TITLE	1" = 500'
TYPICAL	1/8" = 1'
PLAN	1" = 50'
PROFILE HORIZONTAL	1" = 50'
PROFILE VERTICAL	1" = 10'
CROSS SECTIONS	1" = 5'



338+30 End of Excavation approved: and not all excavation completed beyond this point.
382+50 No drainage completed beyond this point.

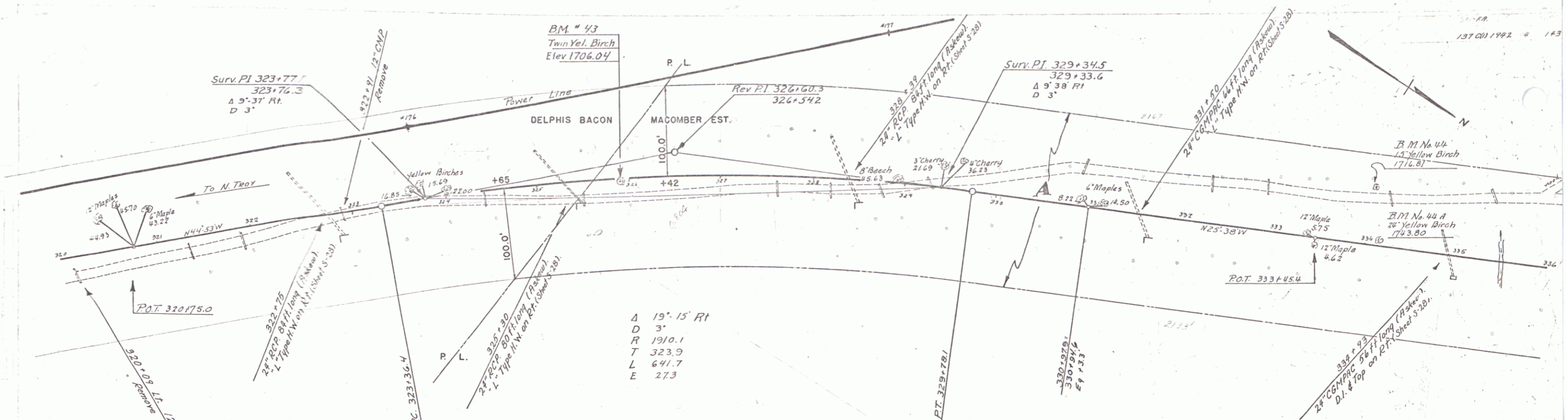
THESE PLANS ARE SUBJECT TO SUCH REVISIONS AS MAY BE REQUIRED BY THE PUBLIC ROADS ADMINISTRATION OR THE COMMISSIONER OF HIGHWAYS.
CONSTRUCTION IS TO BE CARRIED ON IN ACCORDANCE WITH THE PLANS AND THE STANDARD ROAD AND BRIDGE SPECIFICATIONS OF 1936, AS APPROVED DECEMBER 29TH, 1936 BY THE PUBLIC ROADS ADMINISTRATION, INCLUDING ALL SUBSEQUENT APPROVED REVISIONS AND SUCH REVISED SPECIFICATIONS AND SPECIAL PROVISIONS AS ARE SUBMITTED WITH THE PLANS.

APPROVED: June 9 1941
H. B. Sawyer
COMMISSIONER OF HIGHWAYS

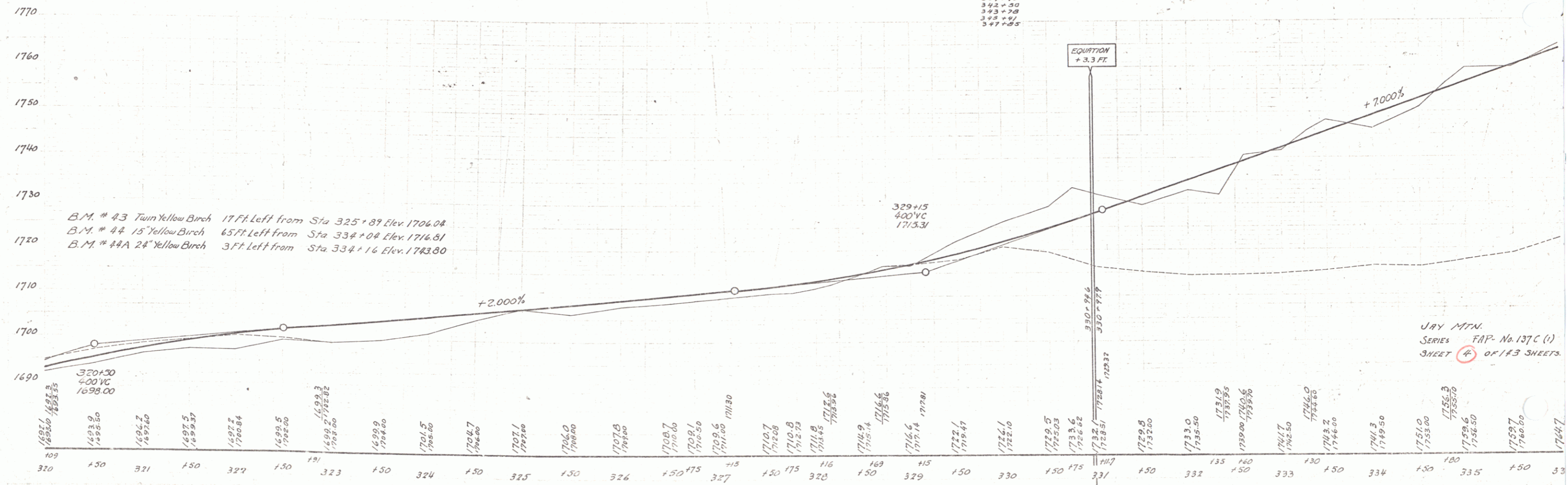
Route VT105
Pin # 00R166

APPROVED: June 9 1941 ROAD ENGINEER	APPROVED: June 9 1941 DISTRICT HIGHWAY COMMISSIONER	SERIES FAP No. 137C(1) FILED SHEET 1 OF 143 Sheets
--	--	---

DIST. #9 PLANS

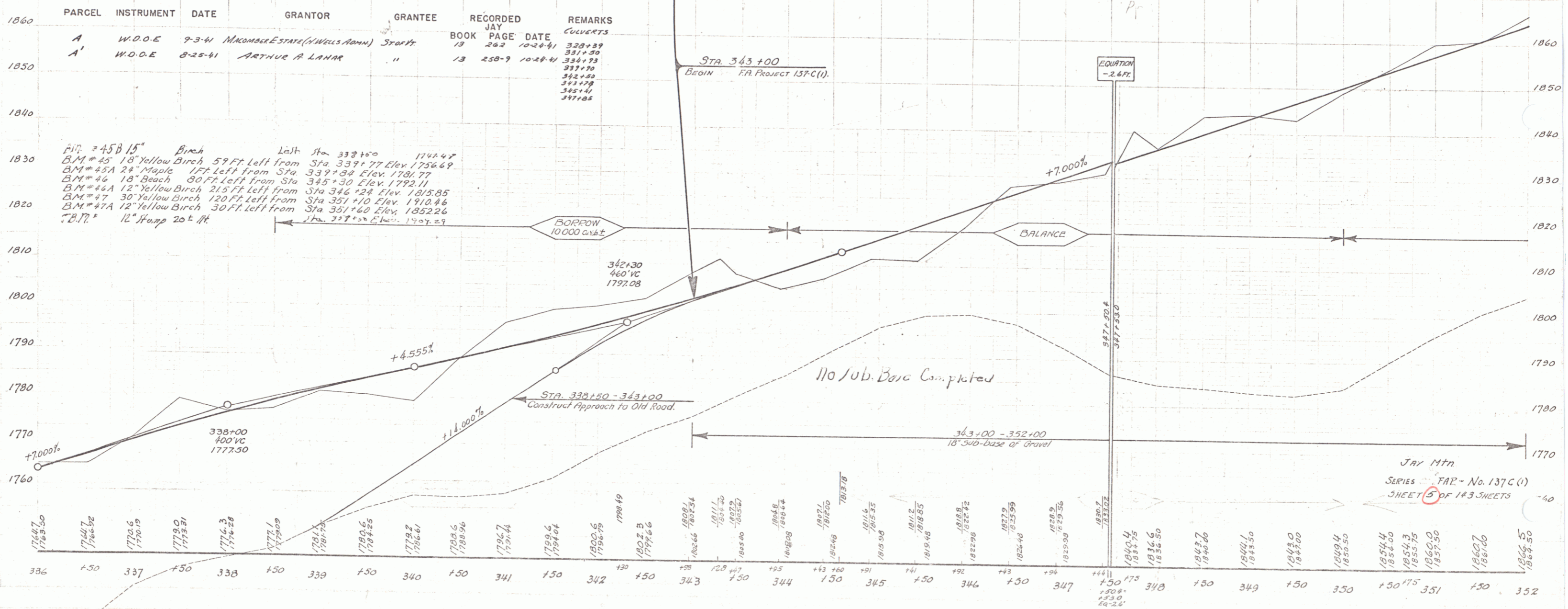
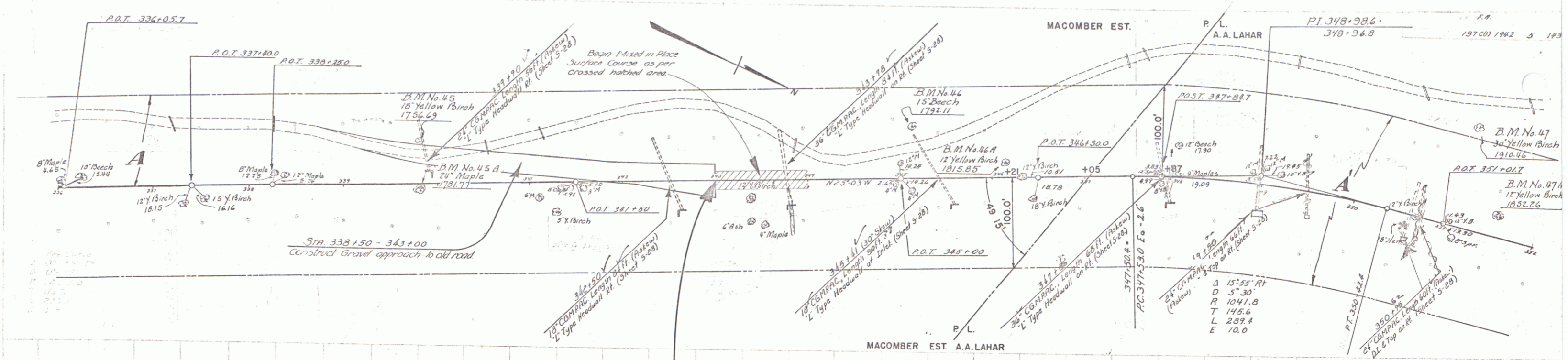


PARCEL	INSTRUMENT	DATE	GRANTOR	GRANTEE	RECORDED	REMARKS
A	W.D.O.E.	9-3-41	MACOMBER ESTATE (N. WALLS ANN)	STOFFT	13 262 10-24-41	CULVERTS 328+39 331+50 334+93 337+96 342+20 343+78 348+44 347+25



B.M. # 43 Twin Yellow Birch 17 Ft. Left from Sta 325+89 Elev. 1704.04
 B.M. # 44 15 Yellow Birch 65 Ft. Left from Sta 334+04 Elev. 1714.51
 B.M. # 44A 24 Yellow Birch 3 Ft. Left from Sta 334+16 Elev. 1714.80

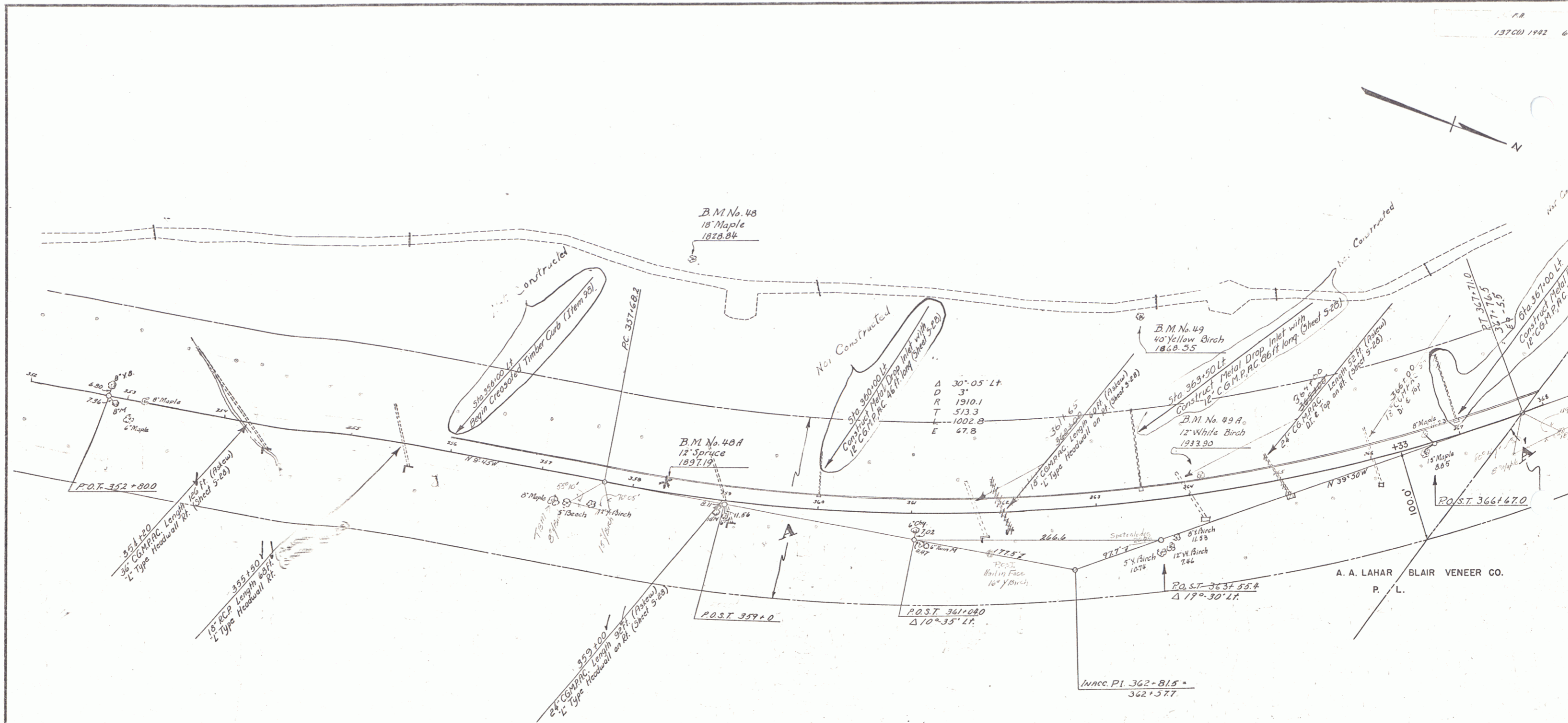
JAY MTN.
 SERIES F.A.P. No. 137C (1)
 SHEET 4 OF 143 SHEETS



PARCEL	INSTRUMENT	DATE	GRANTOR	GRANTEE	RECORDED	REMARKS
1860	A	W.D.O.E	9-3-41	MACOMBER ESTATE (WELLS AWMN)	Starts	CONVERTS
1850	A'	W.D.O.E	8-25-41	ARTHUR A LAHAR	"	"

B.M. = 45 B 15" Birch
 B.M. = 45 18" Yellow Birch 59 FT left from Sta 337+77 Elev. 1754.49
 B.M. = 46A 24" Maple 1 FT left from Sta 337+84 Elev. 1781.77
 B.M. = 46B 18" Beech 80 FT left from Sta 345+30 Elev. 1792.11
 B.M. = 47 12" Yellow Birch 215 FT left from Sta 346+24 Elev. 1815.85
 B.M. = 47A 12" Yellow Birch 120 FT left from Sta 351+10 Elev. 1810.44
 B.M. = 47B 12" Yellow Birch 30 FT left from Sta 351+40 Elev. 1852.26
 B.M. = 47C 12" Yellow Birch 20 FT left from Sta 351+20 Elev. 1829.29

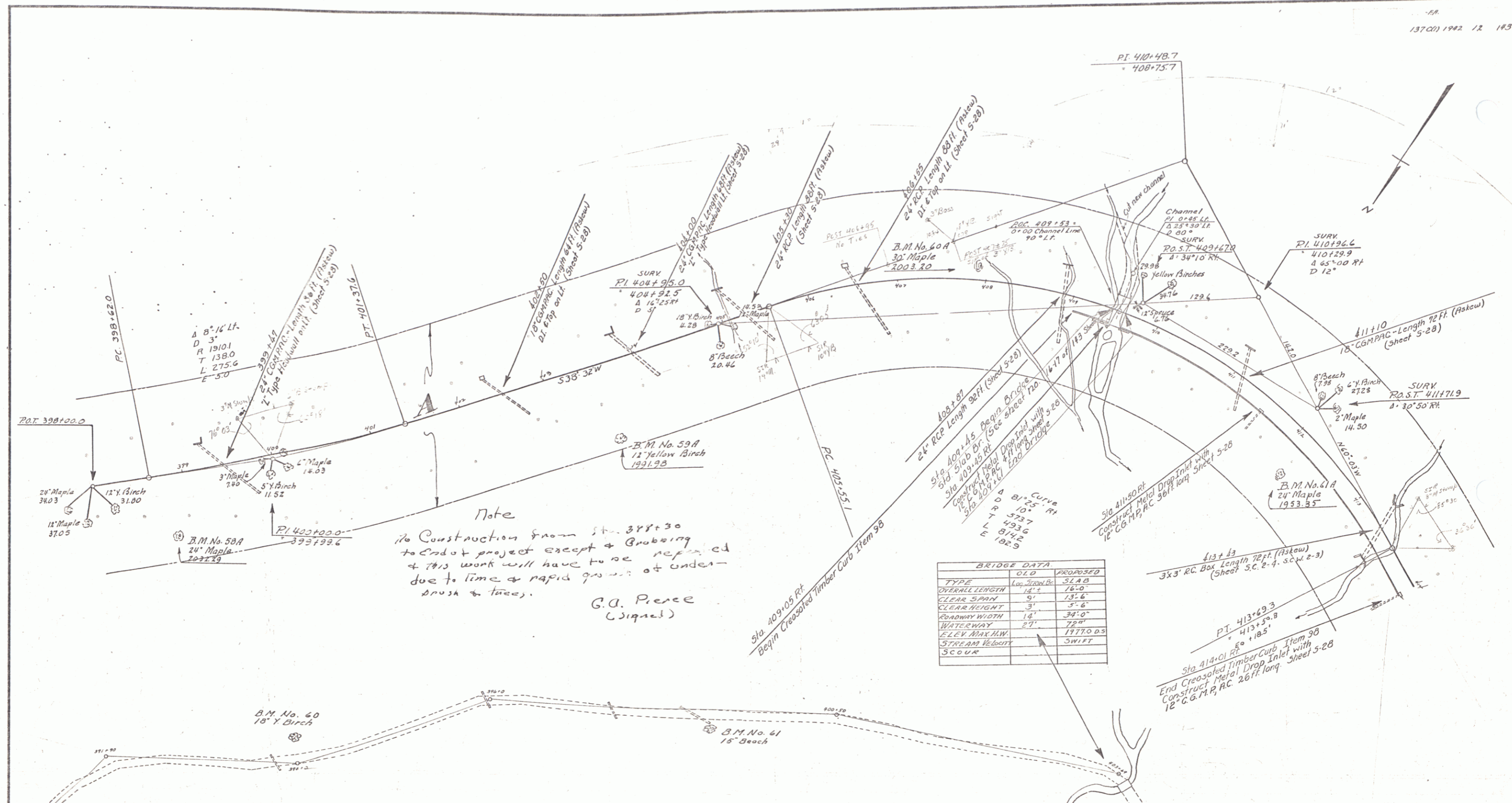
JAY Mtn
 SERIES FAP - No. 137C (1)
 SHEET 5 OF 143 SHEETS



PARCEL	INSTRUMENT	DATE	GRANTOR	GRANTEE	RECORDED	REMARKS
A	W.D.O.E.	8-23-41	ARTHUR A. LAHAR	Scot Vt.	JAY BOOK 13 PAGE 258-7	10-24-41
A'	N.D.O.E.	8-30-41	BLAIR VENEER CO.	"	JAY BOOK 13 PAGE 257-B	10-24-41

ESTIMATED QUANTITIES	

JAY MTN.
 Surveyed by Lane
 Designed by
 Drawn by H.B.K.
 Traced by H.B.K.
 Checked by
 Series TAP No. 137C(1) P1
 Sheet 6 of 183 S



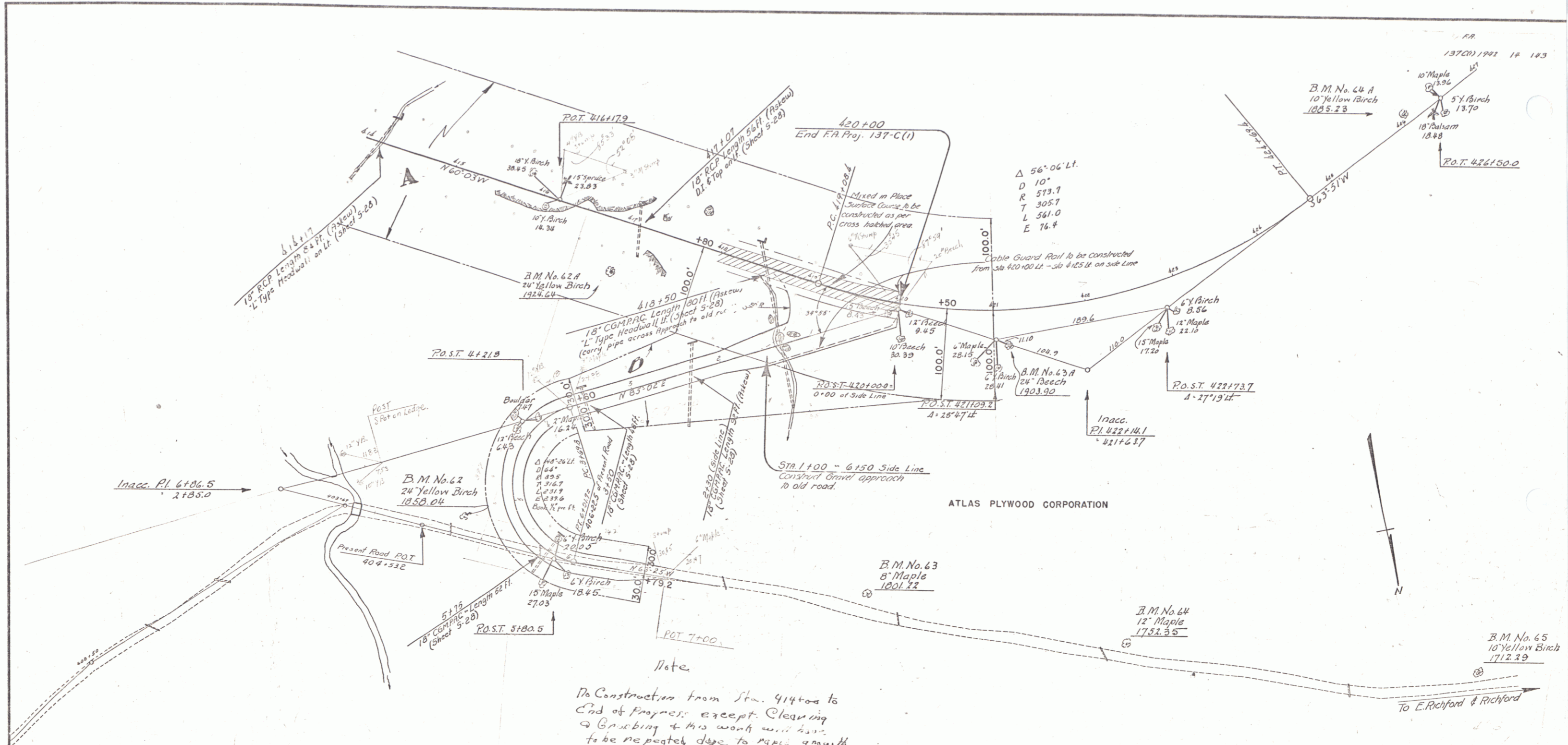
Note
 No Construction from Sta. 398+30
 to End of project except Groboring
 & this work will have to be repeated
 due to time & rapid growth of under-
 brush & trees.
 G.D. Pierce
 (Signed)

BRIDGE DATA		PROPOSED
TYPE	02.0	SLAB
OVERALL LENGTH	14'-0"	16'-0"
CLEAR SPAN	0'	13'-6"
CLEAR HEIGHT	3'	3'-6"
ROADWAY WIDTH	14'-0"	34'-0"
WATERWAY	27'	72'
ELEV. MAX. H.W.		177.00
STREAM VELOCITY		SWIFT
SCOUR		

PARCEL	INSTRUMENT	DATE	GRANTOR	GRANTEE	RECORDED	REMARKS
A	W.D.O.E.	8-29-41	ATLAS PLYWOOD CORP.	STOFFA	JAY BOOK 13 PAGE 261-2	DATE 10-24-41

ESTIMATED QUANTITIES	

JAY MIN.
 Surveyed by Lane
 Designed by
 Drawn by H.B.K.
 Traced by H.B.K.
 Check'd by
 Series: FA# No. 137C(1) File
 Sheet 12 of 143



PARCEL	INSTRUMENT	DATE	GRANTOR	GRANTEE	RECORDED	REMARKS
AB	W.D.O.E.	8-23-41	ATLAS PLYWOOD CORP.	SP. OF YR.	13 261-2	10-24-41

ESTIMATED QUANTITIES	

JAY MTR.
 Surveyed by Lane
 Designed by
 Drawn by H.B.K.
 Traced by H.B.K.
 Checked by
 Series: FAF No. 137C(1) Filed
 Sheet 16 of 113 Sheets