

**INDEX OF SHEETS**

SHEET NO.	TITLE PAGE	DESCRIPTION
1	TITLE PAGE	
2	TYPICAL CROSS-SECTION OF IMPROVEMENT	2 1/2" Crushed Gravel Mixed in Place Surface
3	BANKING AND WIDENING TABLES	Course, Item 25, with Refined Tar, Item 30.
4-15	PLAN AND PROFILE	
16	Details of Abutments 1 & 2	Slab Bridge @ Sta. 409+53.
17	Details of Superstructure	
18	Standard Structure Sheet	SB 5C Curb & Posts
19	"	SB 20 Details R (Score Marks) E & J
20	"	S-28 Pipe Culverts
21	"	S-30 Guard Rail, Timber Curb
22	"	S-30-A Standard Underdrain
23	"	S-31 Boundary Markers
24	"	S-40 Barricades, Signs & Lights
25	"	S-41 Rounding of Slopes
26	"	SC-2-4 Box Culverts
27	"	SCW-2-3 Wings for Box Culverts
28-143	Cross Sections	

STATE OF VERMONT  
STATE HIGHWAY DEPARTMENT

PLAN AND PROFILE OF PROPOSED  
STATE HIGHWAY  
FEDERAL AID PROJECT

JAY MTN.  
TOWN OF JAY

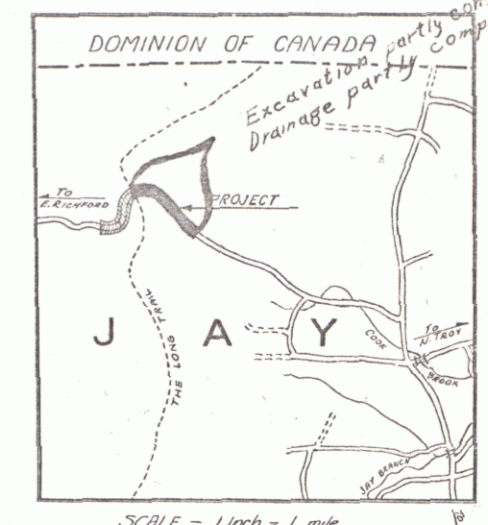
N. TROY-JAY MTN.-ERICHFORD ROAD

BEGINNING AT A POINT ON THE STATE AID ROAD BETWEEN N. TROY AND E. RICHFORD VIA OF JAY MTN., SAID POINT BEING 4.34 MILES WEST OF THE TROY-JAY TOWN LINE AND EXTENDING WESTERLY 1.454 MILES

LENGTH OF PROJECT 7680.4 FT. = 1.454 MILES

RECORD PLANS by G.A. Pierce

FED. ROAD DIST. NO.	STATE	FED. AID PROJ. NO.	FISCAL YEAR	SHEET NO.	TOTAL SHEETS
9	Vt.	137C(1)	1942	1	143



Standard Structure Sheets Approved by the Chief Engineer.

April 26, 1941.  
Aug. 15, 1939.  
March 19, 1941.  
July 25, 1939.

TO BE RETURNED TO R.O.W. DIVISION

OWN FILE

RIGHT-OF-WAY DIVISION

PERMIT

VT 105

PROJ. NO.	DATE	BY	REVISION
137C(1)	1942	G.A. Pierce	Original

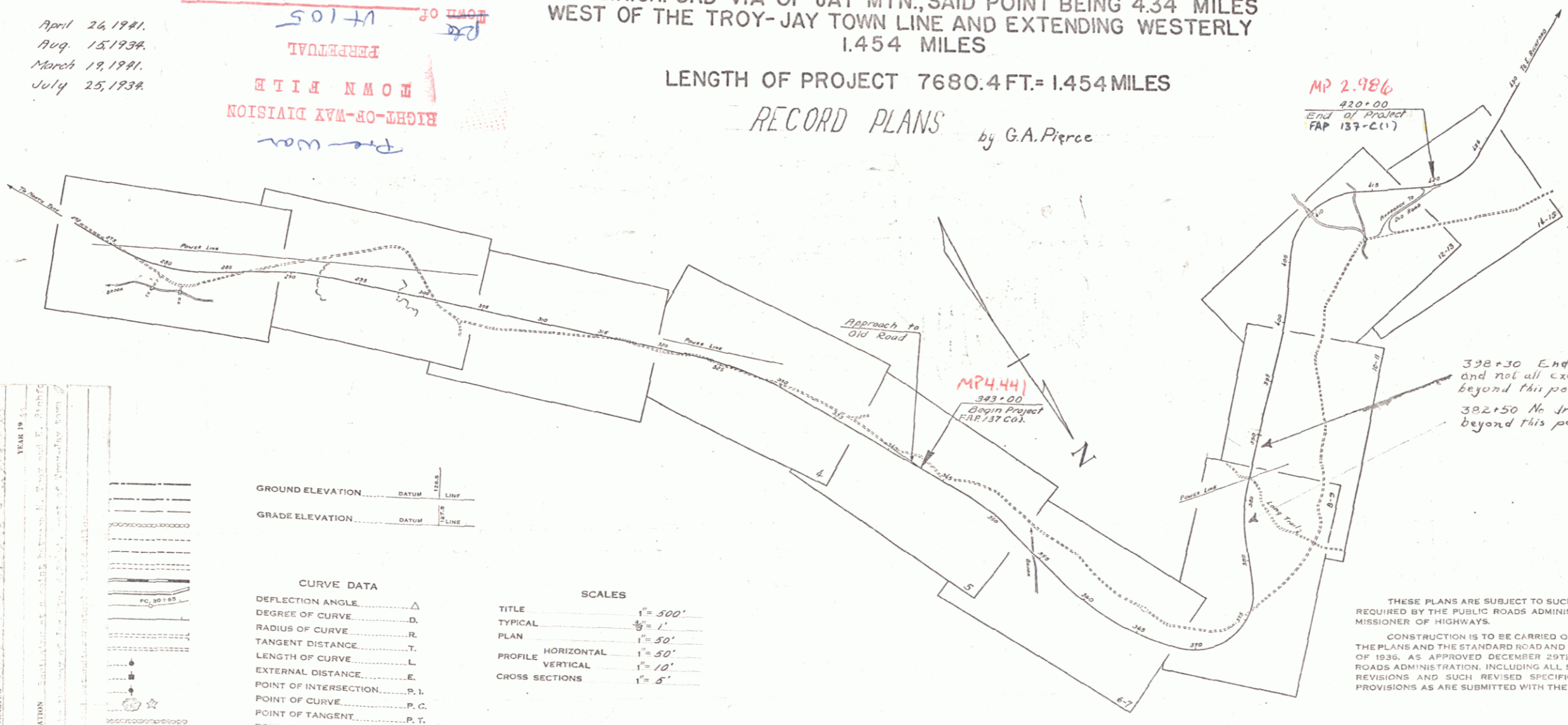
GROUND ELEVATION	DATUM	LINE
.....	.....	.....
GRADE ELEVATION	DATUM	LINE
.....	.....	.....

**CURVE DATA**

DEFLECTION ANGLE	.....	Δ
DEGREE OF CURVE	.....	D
RADIUS OF CURVE	.....	R
TANGENT DISTANCE	.....	T
LENGTH OF CURVE	.....	L
EXTERNAL DISTANCE	.....	E
POINT OF INTERSECTION	.....	P. I.
POINT OF CURVE	.....	P. C.
POINT OF TANGENT	.....	P. T.
POINT ON TANGENT	.....	P. O. T.

**SCALES**

TITLE	1" = 500'
TYPICAL	1/8" = 1'
PLAN	1" = 50'
PROFILE HORIZONTAL	1" = 50'
PROFILE VERTICAL	1" = 10'
CROSS SECTIONS	1" = 5'



MP 2.986  
420+00  
END OF PROJECT  
FAP 137-C(1)

MP 4.44  
383+00  
Begin Project  
FAP 137-C(1)

382+30 End of Excavation approved and not all excavation completed beyond this point.  
382+50 No drainage completed beyond this point.

June 9 1941  
H. B. Sawyer  
COMMISSIONER OF HIGHWAYS

Route VT 105  
Pin # 00R166

THESE PLANS ARE SUBJECT TO SUCH REVISIONS AS MAY BE REQUIRED BY THE PUBLIC ROADS ADMINISTRATION OR THE COMMISSIONER OF HIGHWAYS.

CONSTRUCTION IS TO BE CARRIED ON IN ACCORDANCE WITH THE PLANS AND THE STANDARD ROAD AND BRIDGE SPECIFICATIONS OF 1936, AS APPROVED DECEMBER 29TH, 1936 BY THE PUBLIC ROADS ADMINISTRATION, INCLUDING ALL SUBSEQUENT APPROVED REVISIONS AND SUCH REVISED SPECIFICATIONS AND SPECIAL PROVISIONS AS ARE SUBMITTED WITH THE PLANS.

APPROVED: [Signature] ROAD ENGINEER  
APPROVED: [Signature] DISTRICT HIGHWAY COMMISSIONER  
SERIES FAP No. 137C(1) FILED  
SHEET 1 OF 143 Sheets

DIST. #9 PLANS