

INDEX OF SHEETS	
SHEET NO	TITLE PAGE
1	TITLE PAGE
2	TYPICAL CROSS SECTION OF IMPROVEMENT STABILIZED GRAVEL BASE COURSE OF OUTSIDE APPROACH TO RICHFORD VIA
3	QUANTITY SHEET (1104)
4	QUANTITY SHEET (1104)
5-4	QUANTITY SHEETS (DRAINAGE)
7-27	PLAN AND PROFILE SHEETS
28	DETAILS OF ABUTMENT NO. 40445-40446
29	DETAILS OF SUPERSTRUCTURE 40445-40446
30	DETAILS OF 12" COMP 40445
31	DETAILS OF 8" COMP 40445
32	DETAILS OF 8" COMP 40445
33	DETAILS OF 8" COMP 40445
34	DETAILS OF ABUTMENT NO. 1 APPROACH 4048
35	DETAILS OF ABUTMENT NO. 2 APPROACH 4048
36	REINFORCING STEEL SCHEDULE 4048-4048
37	STANDARD STRUCTURE SHEET (DRAINAGE AND MARKERS)
38	STANDARD STRUCTURE SHEET (DITCHES)
39	STANDARD STRUCTURE SHEET (TYPICAL GRADING)
40	STANDARD STRUCTURE SHEET (BARRICADES, SIGNS AND LIGHTS)
41	STANDARD STRUCTURE SHEET (THREE CABLE GUARD RAIL)
42	STANDARD STRUCTURE SHEET (ACQUA DROP BUILT)
43	STANDARD STRUCTURE SHEET (THREE CABLE GUARD RAIL WITH STEEL POSTS)
44	STANDARD STRUCTURE SHEET (BARRICADES, SIGNS AND LIGHTS)
45	STANDARD STRUCTURE SHEET (BRIDGE DETAILS)
46	STANDARD STRUCTURE SHEET (BRIDGE DETAILS)
47	STANDARD STRUCTURE SHEET (BRIDGE SUPERSTRUCTURE)
48-154	CROSS SECTIONS
155-163	12" COMP PIPE STRUCTURE SECTIONS
164-165	CHANNEL SECTIONS
166-170	EARTHWORK SHEETS

STANDARD STRUCTURE SHEET APPROVED BY THE CHIEF ENGINEER, VERMONT STATE DEPARTMENT OF HIGHWAYS  
S-40 JUNE 10, 1950

# STATE OF VERMONT DEPARTMENT OF HIGHWAYS PROPOSED IMPROVEMENT

## TOWN OF JAY COUNTY OF ORLEANS

FEDERAL PROJECT

NORTH TROY-JAY MOUNTAIN-EAST RICHFORD ROAD

BEGINNING AT A POINT ON THE STATE ROAD BETWEEN NORTH TROY AND EAST RICHFORD VIA JAY MOUNTAIN; SAID POINT BEING 4.34 MILES WEST OF THE TROY-JAY TOWN LINE AND EXTENDING WESTERLY 19,859.4 FEET.

LENGTH OF PROJECT 19,859.4 FT=3.761 MILES

PROJECT NAME & NUMBER	TYPE	PAVEMENT AREA
JAY F137(4)	STABILIZED GRAVEL	51,740 S.Y.

RECORD PLANS

MATERIALS

SUB-BASE OF GRAVEL-DIPAWAY, E. RICHFORD, VT.	REINFORCING STEEL-Vermont Struct. Steel Co. Burlington, VT.
SUB-BASE OF CRUSHED GRAVEL-Sturtevant, VT.	STRUCTURAL STEEL-Vt. Struct. Steel Co. Burlington, VT.
GUTBACK ASPHALT-Franklin, Vermont, Mass.	ACCOMP. PIPE 12" N.E. Metal Pipe Co. Palmer, Mass.
PEA-STONE FOR SEAL-Eden Mine, Eden, VT.	ACCOMP. PIPE 8" N.E. Metal Pipe Co. Palmer, Mass.
SAND FOR SEAL-Caulkins, VT.	ACCOMP. PIPE 8" N.E. Metal Pipe Co. Palmer, Mass.
CEMENT-Franklin, Vermont, Mass.	CABLE FOR GUARD RAIL-American Wire Co.
COURSE AGGR. FOR CONCRETE-Eden Mine, Eden, VT.	GUARD RAIL PAINT-Boston Chemicals, Ltd. Boston, Mass.

CONTRACTOR-CHAMPLAIN CONSTRUCTION CO. INC. CONTRACT DATED-JUL 8, 1953

RESIDENT ENGR.-H. E. August CONTRACT STARTED-DEC 12, 1953

INSPECTORS-A. E. Murphy, H. A. Murphy CONTRACT COMPLETED-OCT 16, 1956

RECORD PLANS-110, 62, 63 CONTRACT ACCEPTED-OCT 17, 1956

(To Be Returned To R.O.W.'s Division)  
OWN FILE  
RIGHT-OF-WAY DIVISION  
FERRERIAL  
OWN OF 4105

CONTRACTOR CHAMPLAIN CONSTRUCTION CO. INC.  
LOCATION BEGINNING AT A POINT ON THE STATE ROAD BETWEEN NORTH TROY AND EAST RICHFORD VIA JAY MOUNTAIN, SAID POINT BEING 4.34 MILES WEST OF THE TROY-JAY TOWN LINE AND EXTENDING WESTERLY 19,859.4 FEET.

PROJECT JAY  
NUMBER F 137(4)  
TYPE STABILIZED GRAVEL COURSE

DATE 3/7/54

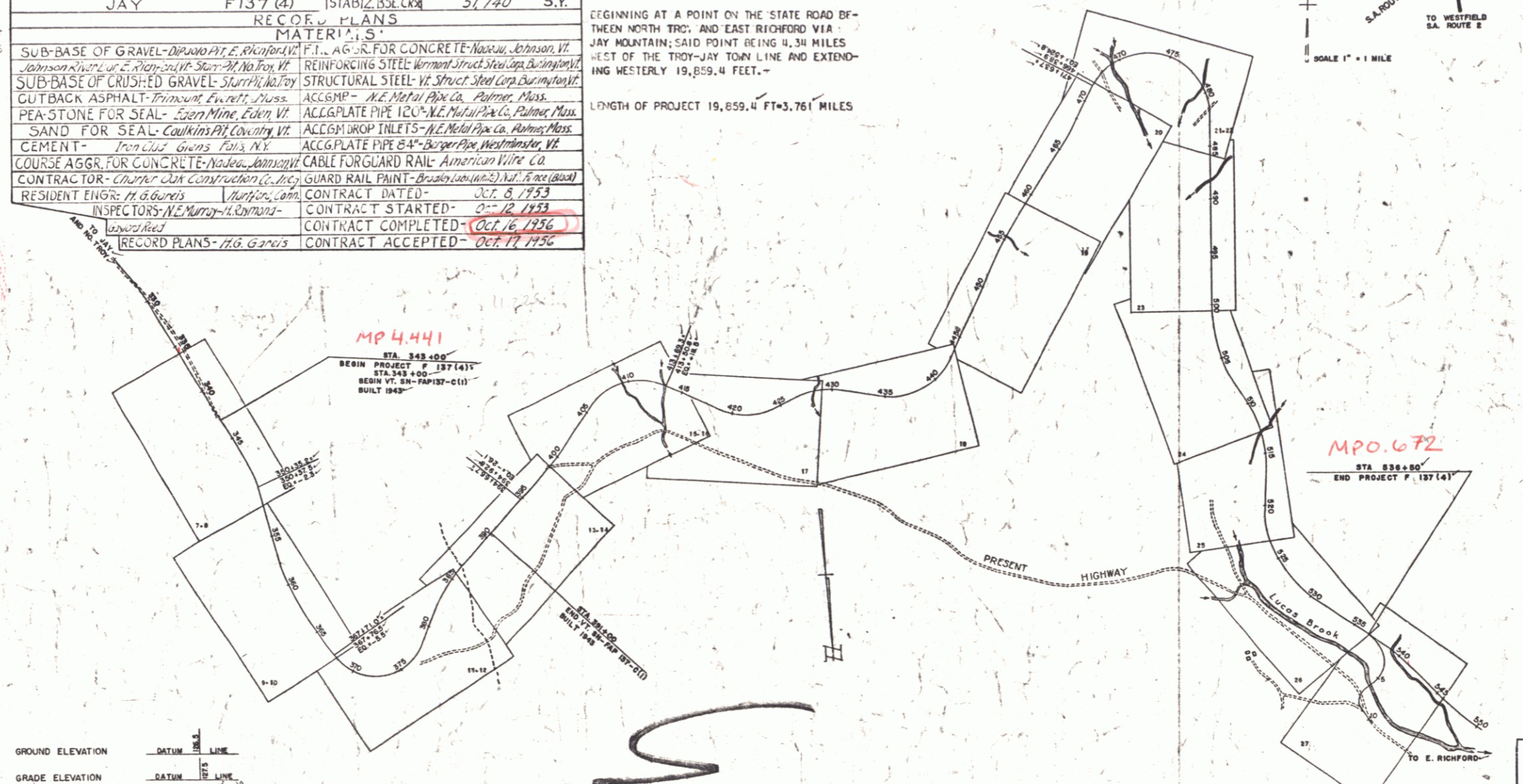
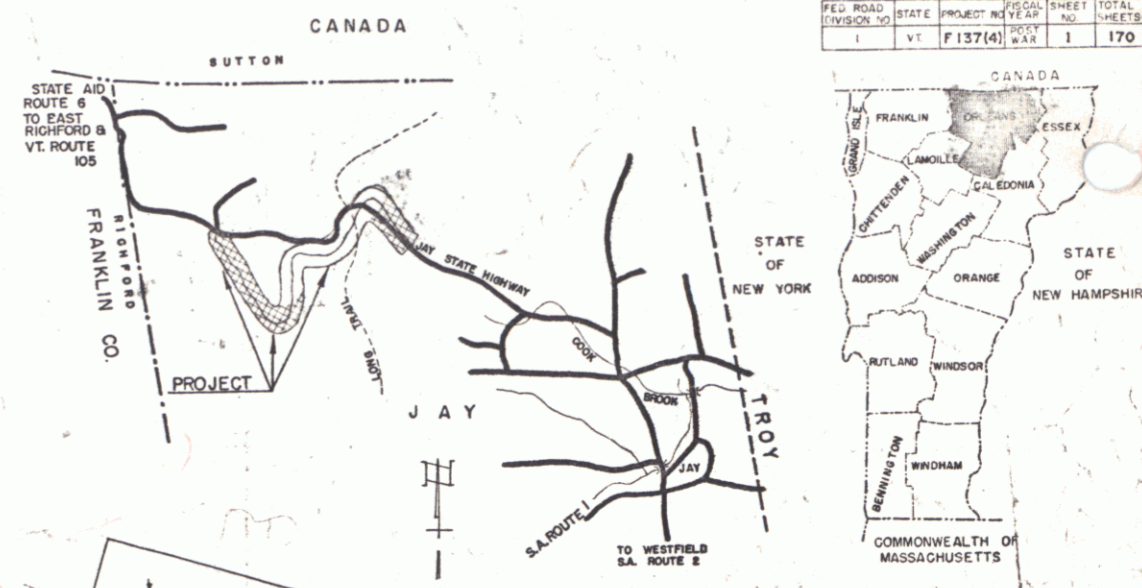
GROUND ELEVATION	DATUM	LINE
GRADE ELEVATION	DATUM	LINE

CURVE DATA

DEFLECTION OF ANGLE	Δ
DEGREE OF CURVE	D
RADIUS OF CURVE	R
TANGENT DISTANCE	T
LENGTH OF CURVE	L
EXTERNAL DISTANCE	E
POINT OF INTERSECTION	P.I.
POINT OF CURVE	P.C.
POINT OF TANGENT	P.T.
POINT ON TANGENT	P.O.T.
POINT ON SUB-TANGENT	P.O.S.T.

SCALES

TITLE	1" = 600'
TYPICAL	1" = 2'
PLAN	1" = 50'
PROFILE HORIZONTAL	1" = 50'
PROFILE VERTICAL	1" = 10'
CROSS-SECTIONS	1" = 5' & 10'



THESE PLANS ARE SUBJECT TO SUCH REVISIONS AS MAY BE REQUIRED BY THE BUREAU OF PUBLIC ROADS OR THE COMMISSIONER OF HIGHWAYS.

CONSTRUCTION IS TO BE CARRIED ON IN ACCORDANCE WITH THE PLANS AND THE STANDARD ROAD AND BRIDGE SPECIFICATIONS OF 1948, AS APPROVED JULY 25, 1949 BY THE BUREAU OF PUBLIC ROADS, INCLUDING ALL SUBSEQUENT APPROVED REVISIONS AND SUCH REVISED SPECIFICATIONS AND SPECIAL PROVISIONS AS ARE SUBMITTED WITH THE PLANS.

NOTE: ANY FURTHER INFORMATION CONCERNING FINAL QUANTITIES, AMOUNTS OR OTHER DETAILS RELATIVE TO THIS PROJECT MAY BE FOUND IN EITHER THE FIELD BOOKS OR THE ESTIMATE FILE.

Route VT105  
Pin# 00R165

DEPARTMENT OF COMMERCE  
BUREAU OF PUBLIC ROADS

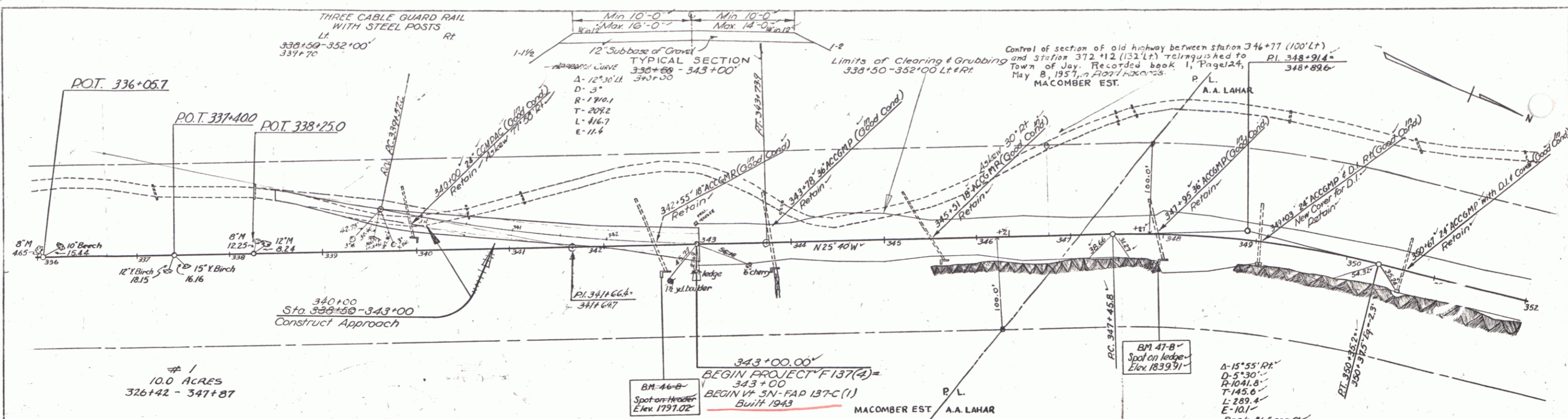
APPROVED: \_\_\_\_\_  
DISTRICT ENGINEER DATE

APPROVED: *H. E. August* DISTRICT ENGINEER DATE AUG 19 1953  
APPROVED: *G. A. Murphy* RESIDE ENGINEER DATE AUG 19 1953  
APPROVED: *R. D. DeWitt* DISTRICT ENGINEER DATE AUG 24 1953  
APPROVED: *J. W. Harvath* RESIDE ENGINEER DATE AUG 19 1953  
APPROVED: *H. E. August* DISTRICT ENGINEER DATE AUG 20 1953

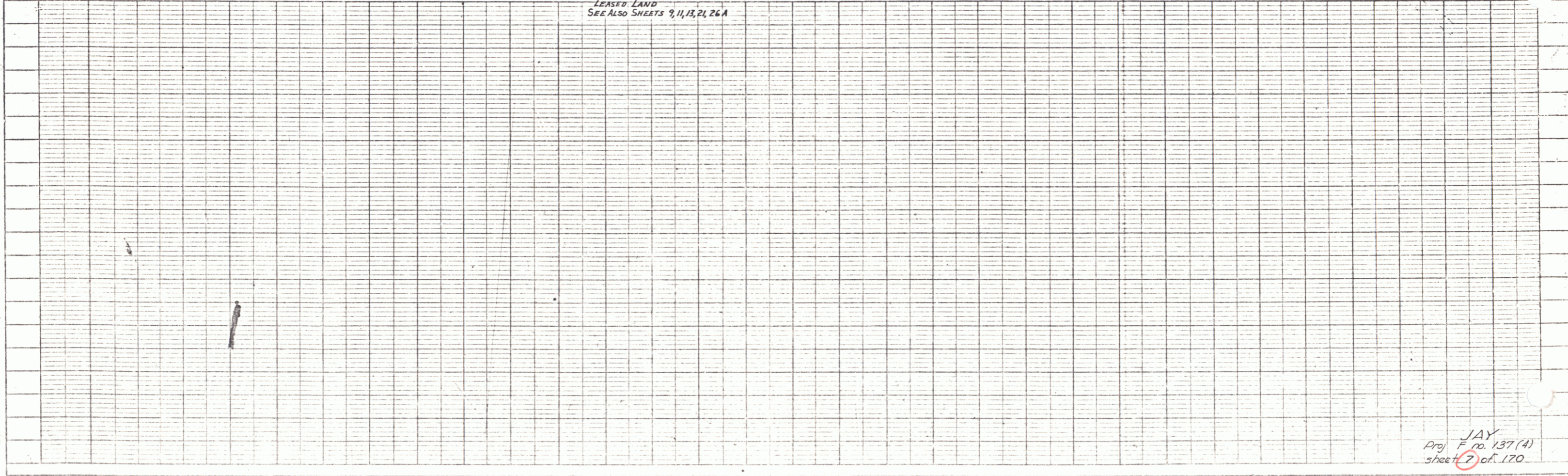
PROJECT F NO. 137(4)  
SHEET 1 OF SHEETS 170

105

PLAN	DATE	BY
REVISION		
NO. 1	10/13/53	JAY
NO. 2		
NO. 3		
NO. 4		
NO. 5		



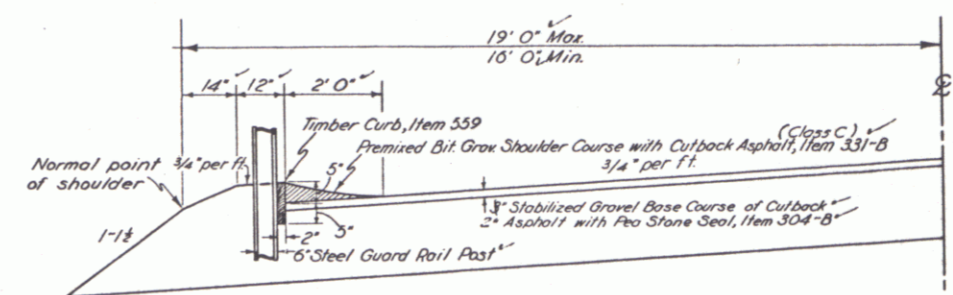
PARCEL	INSTRUMENT	DATE	GRANTOR	GRANTEE	RECORDED	BOOK	PAGE	DATE	REMARKS
#1	ADMR W.D.O.E.	9-3-41	A.A. MACOMBER EST	St of VT	JAY	13	262-3	10-24-41	See 5N-FAP 137C (1) 1942
	Corp QCDDE	10-13-53	UNIVERSITY OF VT	ST of VT	JAY	13	320-322	11-7	RELEASE OF RIGHTS ON PARCELS 1, 2A, 2B, #3 & 4E PART OF ADBAF LEASED LAND SEE ALSO SHEETS 9, 11, 13, 21, 26A



JAY  
 Proj F 10, 137(4)  
 sheet 2 of 170

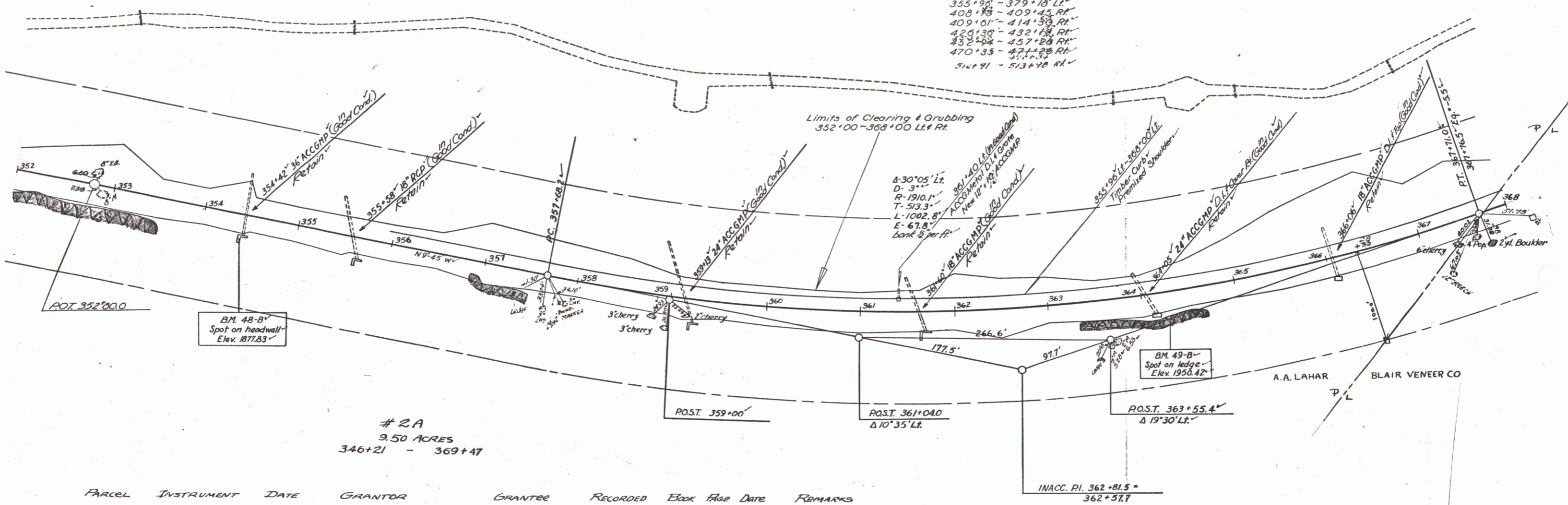
THREE CABLE GUARD RAIL  
WITH STEEL POSTS Rt  
Lt. 352+00 - 368+00

FED. ROAD DIST. NO.	STATE	PROJ. NO.	FISCAL YEAR	SHEET NO.	TOTAL SHEETS
9	VT.				



DETAIL OF  
TIMBER CURB  
& PREMIXED SHOULDER

355+96 - 379+18 Lt.  
408+18 - 409+45 Rt.  
409+01 - 414+30 Rt.  
426+30 - 432+18 Rt.  
432+24 - 457+28 Rt.  
470+33 - 471+28 Rt.  
512+11 - 513+18 Rt.



BM 48-B  
Spot on headwall  
Elev. 1877.83

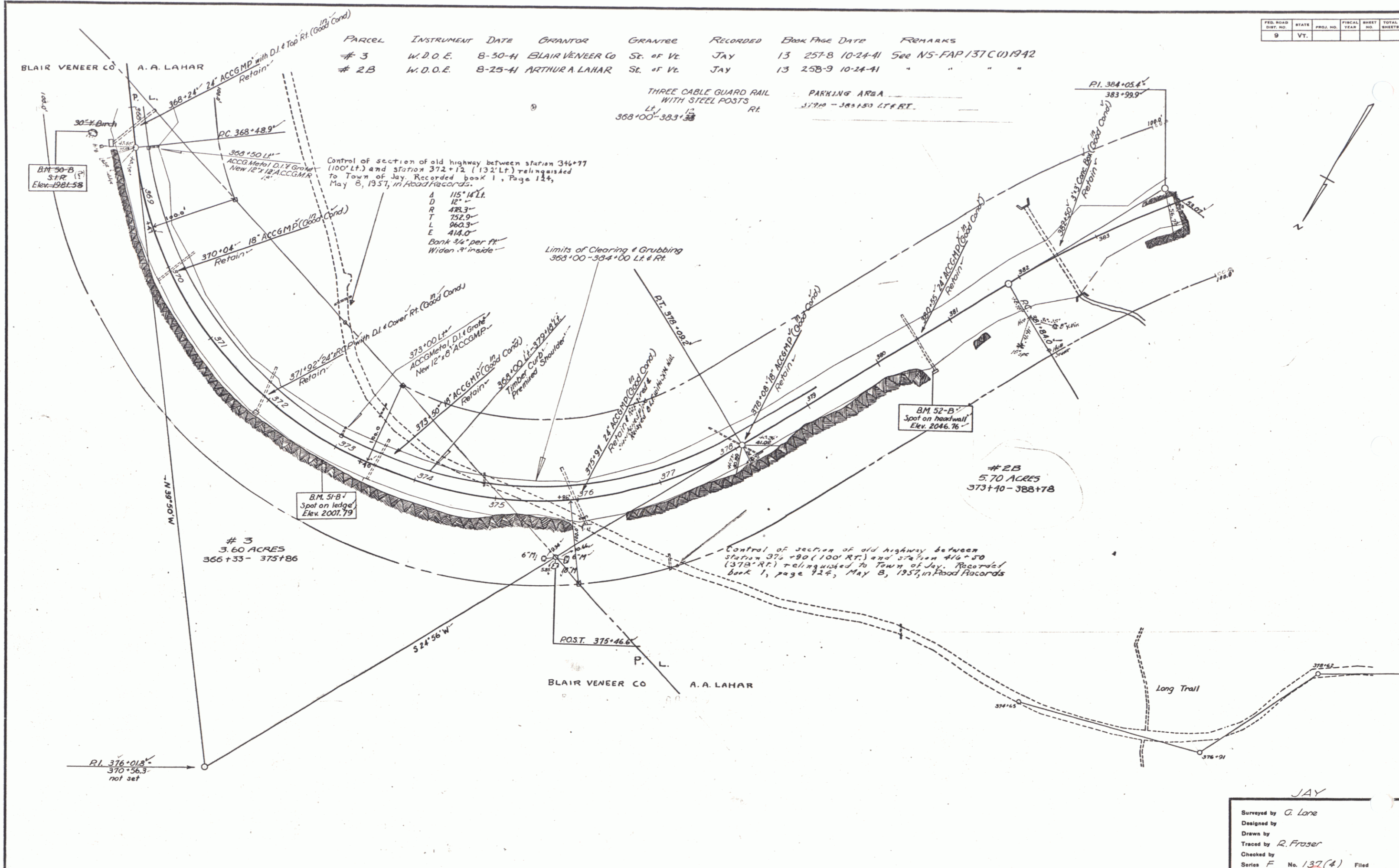
BM 49-B  
Spot on ledge  
Elev. 1958.42

# 2A  
9.50 ACRES  
346+21 - 369+47

PARCEL	INSTRUMENT	DATE	GRANTOR	GRANTEE	RECORDED	BOOK	PAGE	DATE	REMARKS
2A	W.D.O.E.	8-25-41	ARTHUR A. LAHAR	SC. OF VT.	JAY	13	2389	10-24-41	See NS-FAP 137C(1) 1942

JAY

Surveyed by G. Lane  
Designed by  
Drawn by  
Traced by R. Fraser  
Checked by  
Series F No. 137(4) Filed  
Sheet 9 of 170 Sheets



PARCEL	INSTRUMENT	DATE	GRANTOR	GRANTEE	RECORDED	BOOK	PAGE	DATE	REMARKS
# 3	W.D.O.E.	8-30-41	BLAIR VENEER CO	ST. OF VT.	JAY	13	257-8	10-24-41	See NS-FAP 137C(1)1942
# 2B	W.D.O.E.	8-25-41	ARTHUR A LAHAR	ST. OF VT.	JAY	13	258-9	10-24-41	" " " "

FED. ROAD DIST. NO.	STATE	PROJ. NO.	FISCAL YEAR	SHEET NO.	TOTAL SHEETS
9	Vt.				

Control of section of old highway between station 374+77 (100' LT.) and station 372+12 (132' LT.) relinquished to Town of Jay. Recorded book 1, Page 124, May 8, 1957, in Flood Records.

A 115' 18" LT.  
 D 12' -  
 R 483.3'  
 T 752.9'  
 L 962.3'  
 E 414.0'  
 Bank 3/4" per ft.  
 Widen 9" inside

Limits of Clearing & Grubbing  
 368+00 - 384+00 LT. & RT.

Control of section of old highway between station 372+80 (100' RT.) and 374+77 (132' RT.) relinquished to Town of Jay. Recorded book 1, page 124, May 8, 1957, in Flood Records.

JAY  
 Surveyed by G. Lane  
 Designed by  
 Drawn by R. Frazer  
 Traced by  
 Checked by  
 Series F No. 137(4) Filed  
 Sheet 11 of 170 Sheets





PLAN  
 SHEET NO. 17  
 DATE 1/17/53  
 DRAWN BY G. S. Spaulding  
 CHECKED BY G. S. Spaulding

PROFILE  
 SHEET NO. 17  
 DATE 1/17/53  
 DRAWN BY G. S. Spaulding  
 CHECKED BY G. S. Spaulding

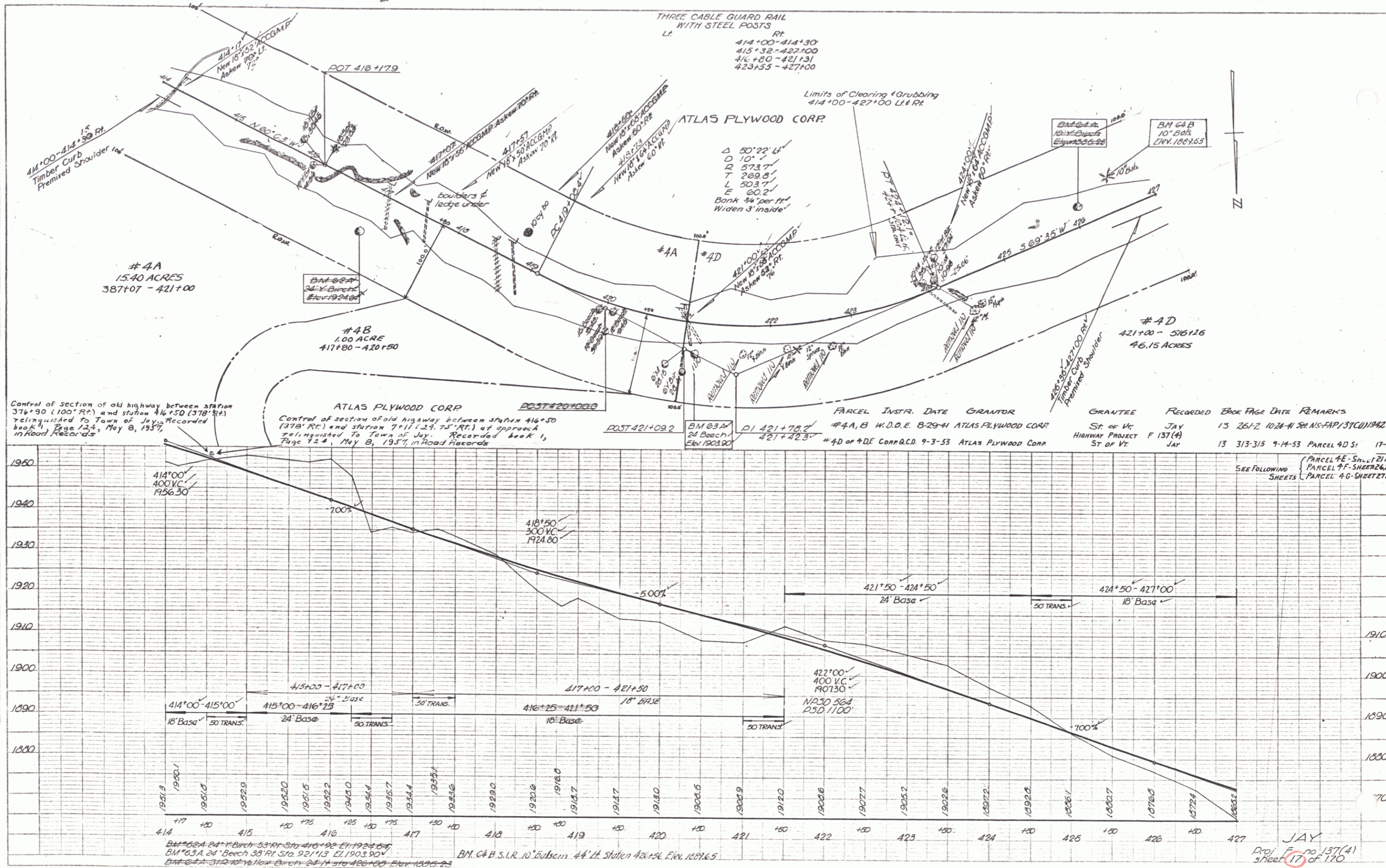


PLATE 1-PLAN & PROFILE  
 SCALE: 1" = 40' HORIZ. 1" = 10' VERT.  
 ENGINEER: G. S. SPULDING  
 SURVEYOR: G. S. SPULDING

PLAN  
 DRAWN BY: G. L. Palmer  
 CHECKED BY: J. E. Palmer  
 DATE: 10-2-50  
 SHEET NO. 18 OF 120

PROFILE  
 DRAWN BY: G. L. Palmer  
 CHECKED BY: J. E. Palmer  
 DATE: 10-2-50  
 SHEET NO. 18 OF 120

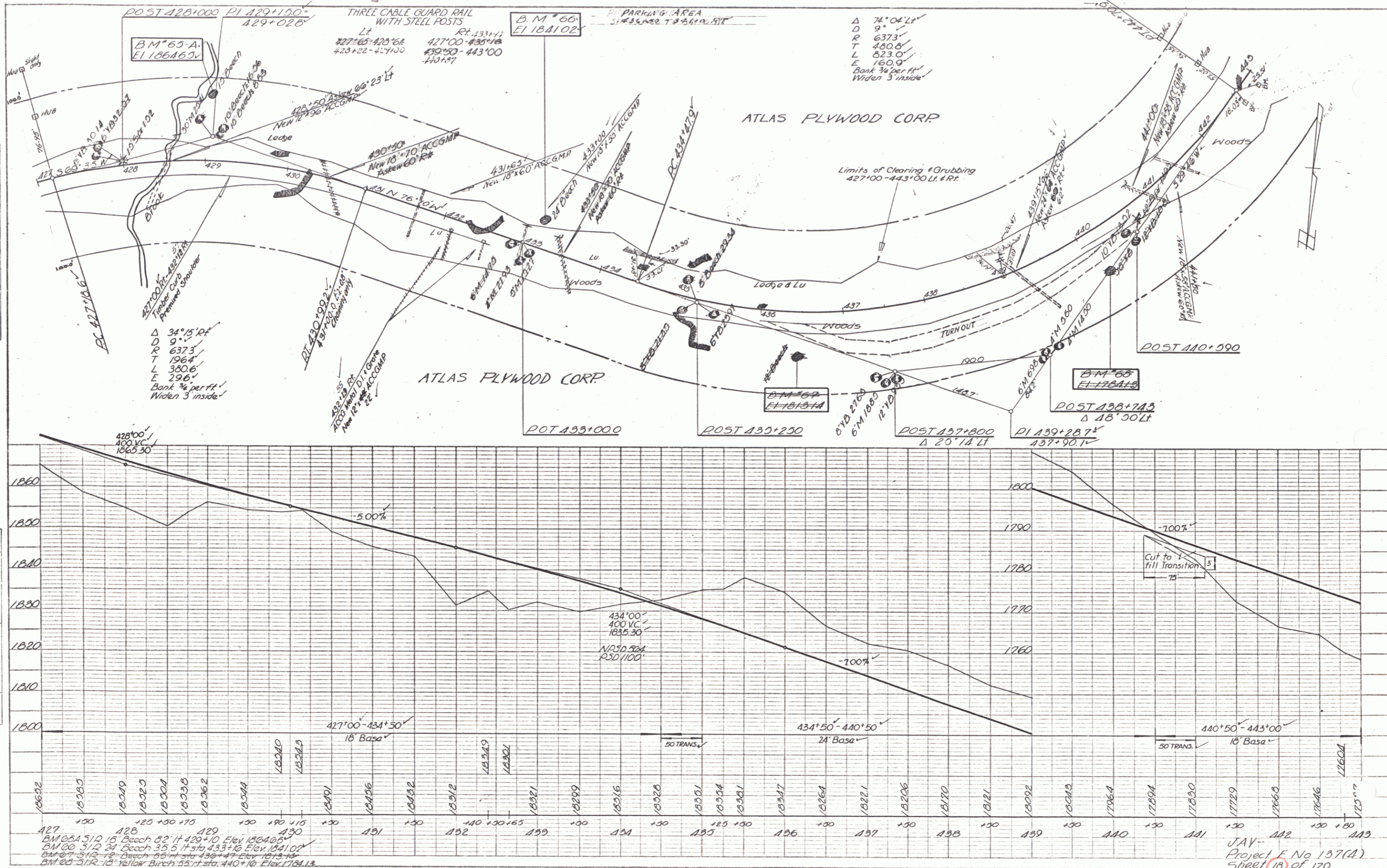
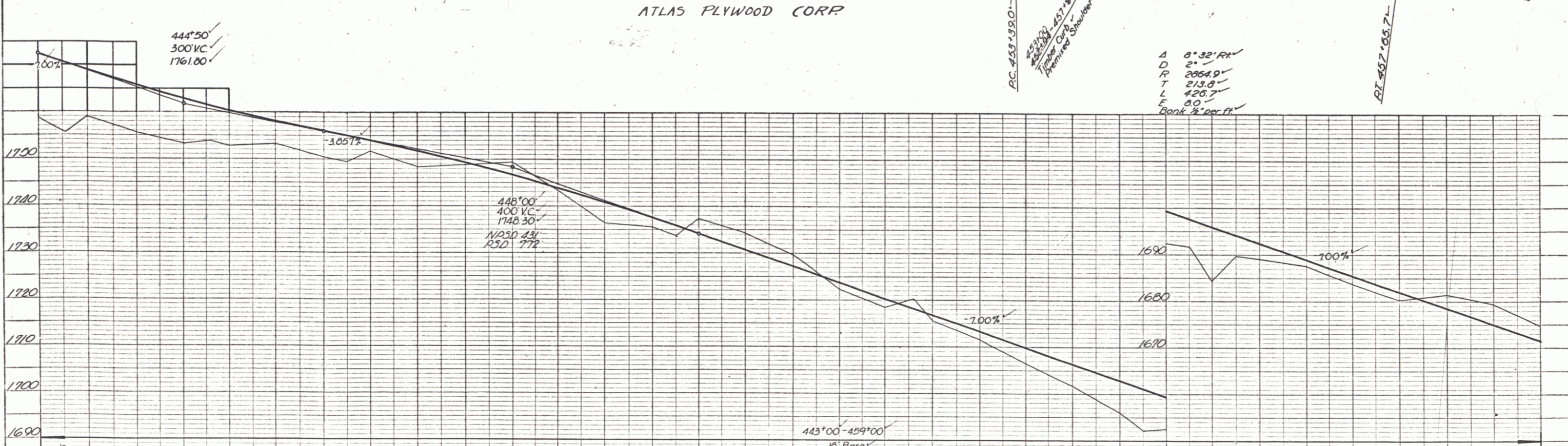
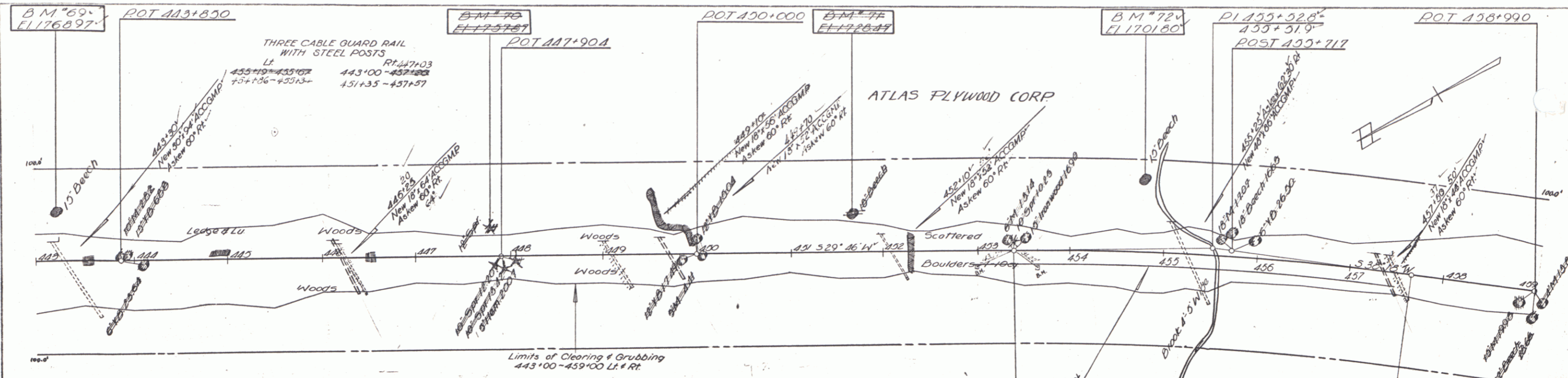


PLATE 1 - PLAN-PROFILE  
 HOFFMAN & LUDWIG CO., NEW YORK  
 MADE IN U.S.A.

JAV  
 Project F No 137(A)  
 Sheet 18 of 120



PLAN  
 DRAWN BY: G. L. Palmer  
 CHECKED BY: J. Palmer  
 DATE: 5-24-54  
 SHEET NO. 19 OF 170

PROFILE  
 DRAWN BY: G. L. Palmer  
 CHECKED BY: J. Palmer  
 DATE: 5-24-54  
 SHEET NO. 19 OF 170

443	444	445	446	447	448	449	450	451	452	453	454	455	456	457	458	459
17087	17090	17096	17092	17089	17084	17082	17076	17067	17057	17042	17027	17024	17013	17000	16987	16977
17087	17090	17096	17092	17089	17084	17082	17076	17067	17057	17042	17027	17024	17013	17000	16987	16977

BM 69 512.15 Beach 53 ft. sta 443+22 Elev. 1766.97  
 BM 70 512.12 Beach 51 ft. sta 447+24 Elev. 1757.47  
 BM 71 512.16 Beach 49 ft. sta 451+05 Elev. 1725.47  
 BM 72 512.16 Beach 79 ft. sta 454+77 Elev. 1701.80

PLATE 1 - PLAN - PROFILE OF PARK STATION  
 PREPARED BY: H. H. RICE  
 DATE: 5-24-54

JAY-  
 Project F No. 157 (A)  
 Sheet 19 of 170

PLAN  
 DRAWN BY: G. L. Lerner  
 CHECKED BY: J. J. Lerner  
 DATE: 5-22

PROFILE  
 DRAWN BY: G. L. Lerner  
 CHECKED BY: J. J. Lerner  
 DATE: 5-22

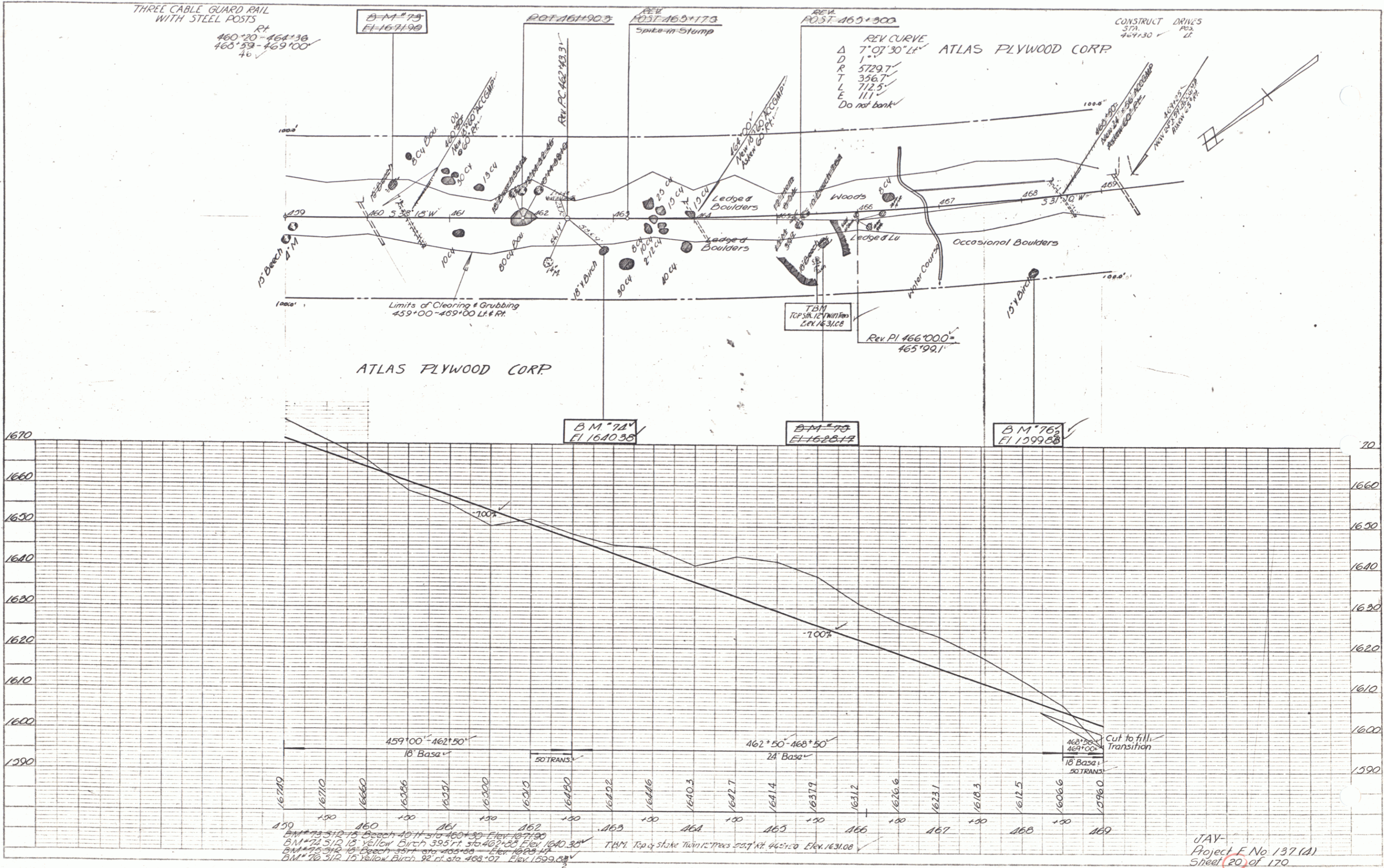
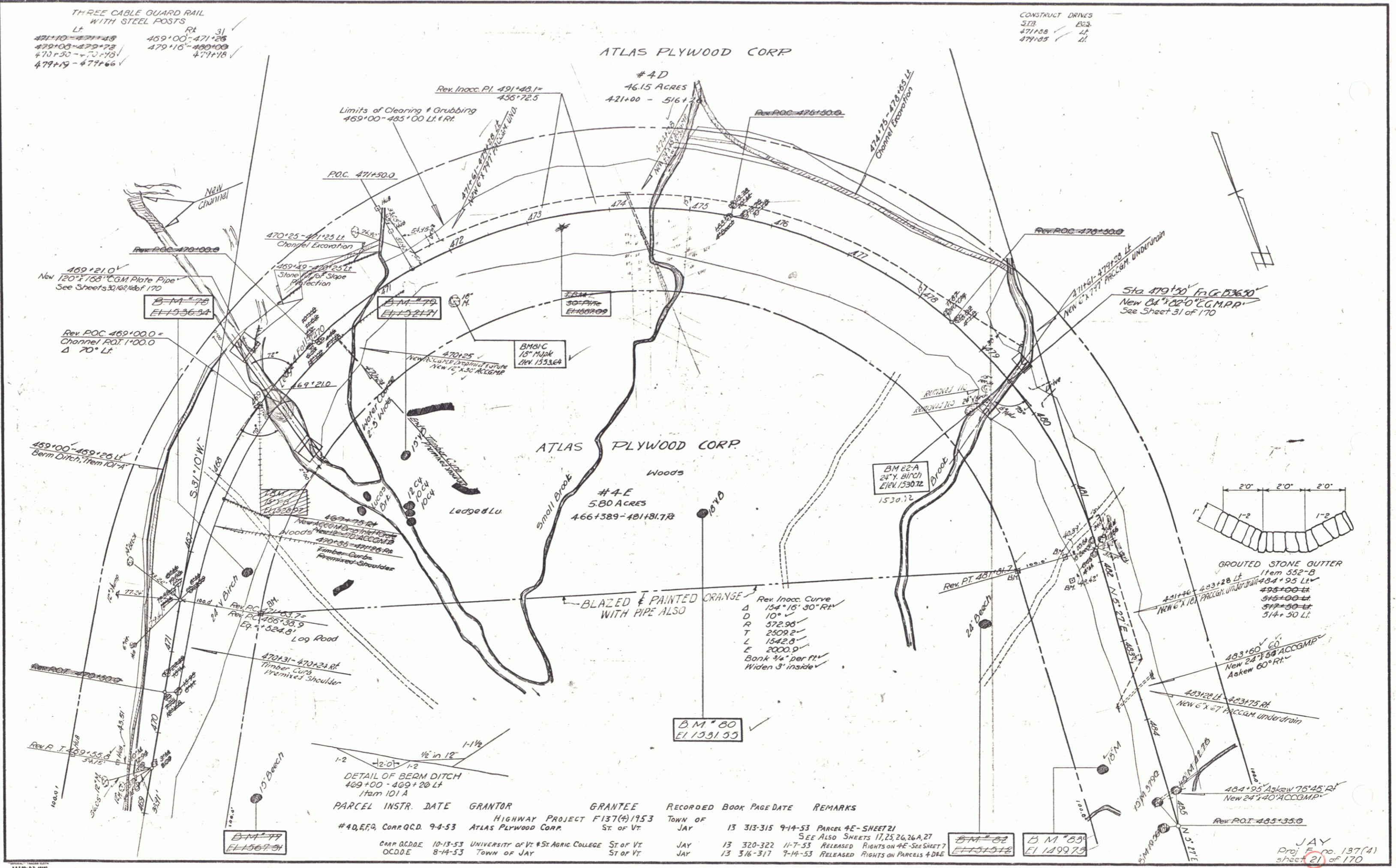
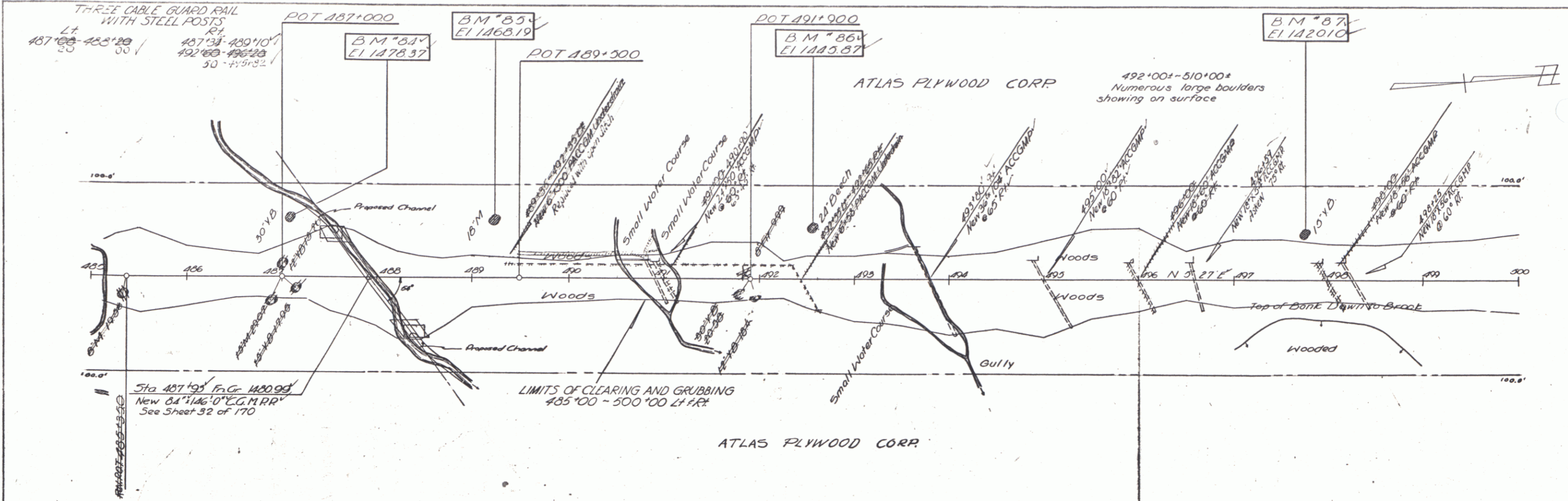


PLATE 1 - PLAN - PROFILE  
 HOFFER & ASSOCIATES  
 110 N. 3rd St. New York, N.Y.

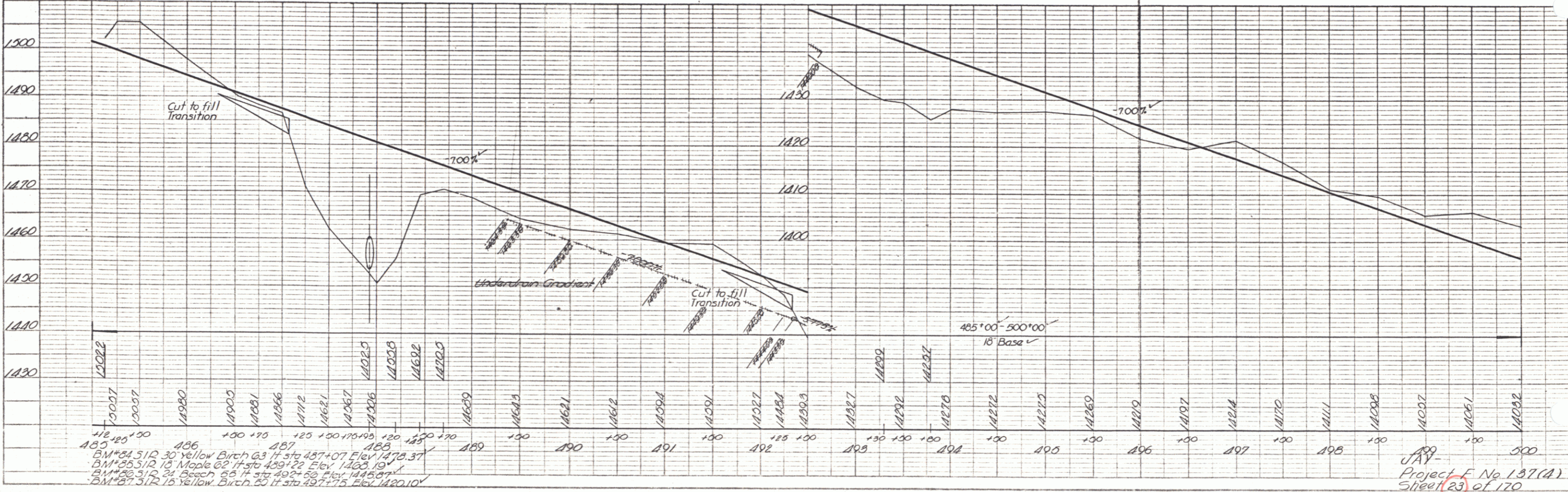
JAV  
 Project E No. 137 (A)  
 Sheet 20 of 170



PLAN  
 DRAWN BY  
 J. Palmer  
 CHECKED BY  
 J. Palmer  
 DATE BOOKED  
 5-24



PROFILE  
 DRAWN BY  
 J. Palmer  
 CHECKED BY  
 J. Palmer  
 DATE BOOKED  
 5-24



485+00 150  
 486  
 487  
 488  
 489  
 490  
 491  
 492  
 493  
 494  
 495  
 496  
 497  
 498  
 499  
 500

PLATE 1 - PLAN-PROFILE  
 ADRIAN & REED CO. NEW YORK  
 MADE IN U.S.A.

Project No. 137(A)  
 Sheet 23 of 120

PLAN  
 DATE 9-2-24  
 DRAWN BY JAV  
 CHECKED BY JAV  
 IN CHARGE BY JAV

PROFILE  
 DATE 9-2-24  
 DRAWN BY JAV  
 CHECKED BY JAV  
 IN CHARGE BY JAV

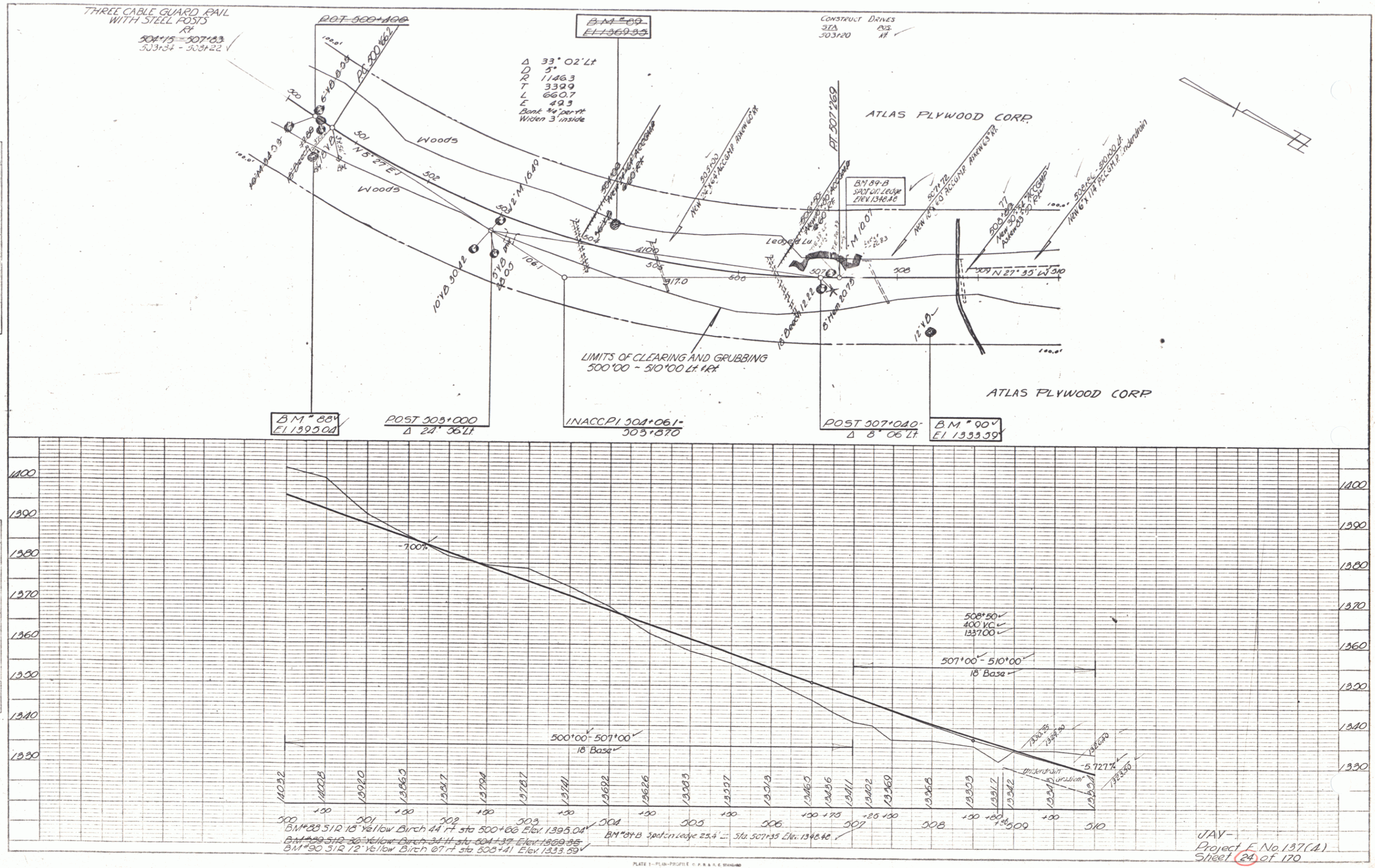


PLATE 1 - PLAN-PROFILE C.P.A. & E. ENGINEERS  
 NEW YORK, N.Y.

JAV -  
 Project E. No. 137(A)  
 Sheet 24 of 170

PLAN  
 DRAWN BY  
 CHECKED BY  
 DATE  
 SHEET NO. OF SHEETS  
 PROJECT NO.

PROFILE  
 DRAWN BY  
 CHECKED BY  
 DATE  
 SHEET NO. OF SHEETS  
 PROJECT NO.

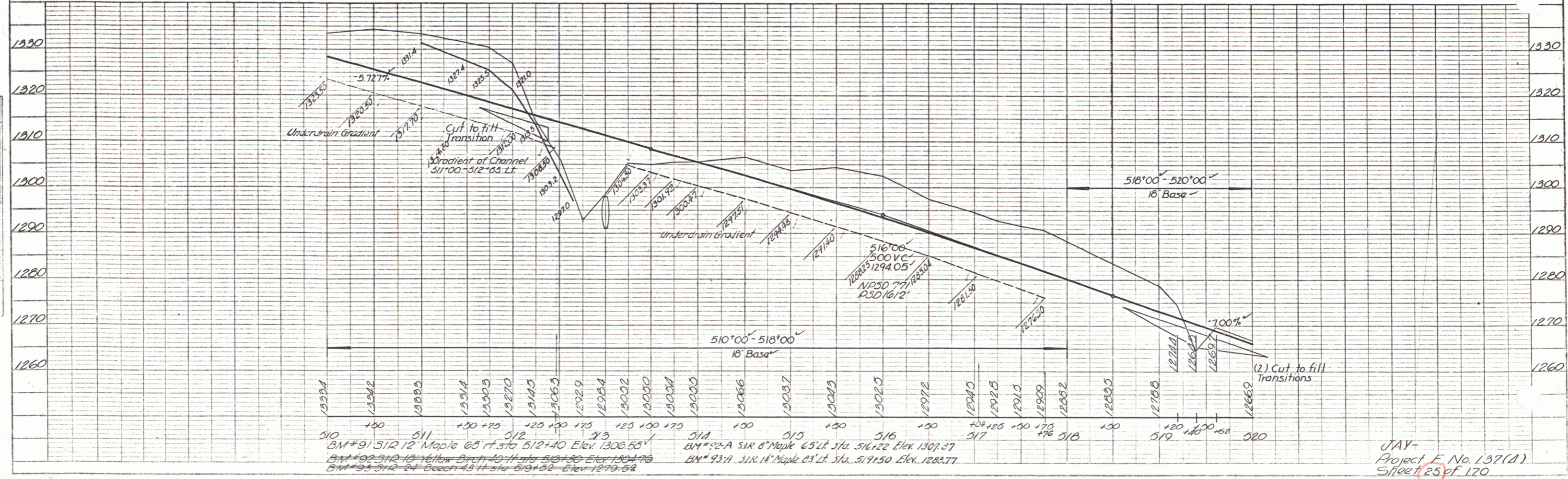
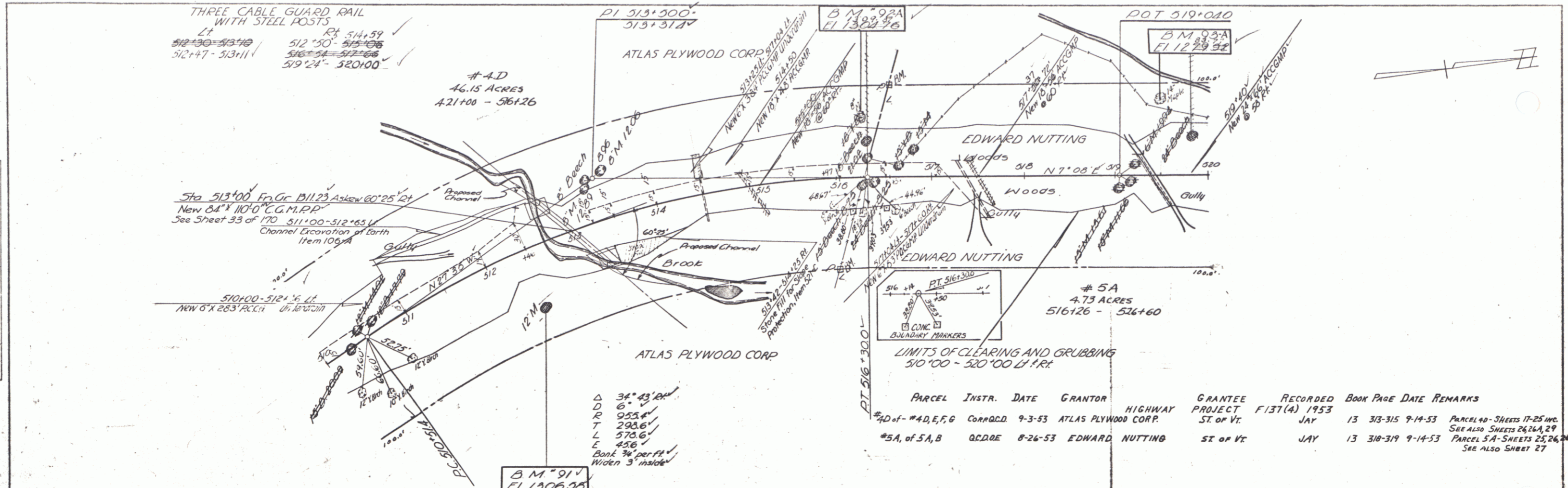
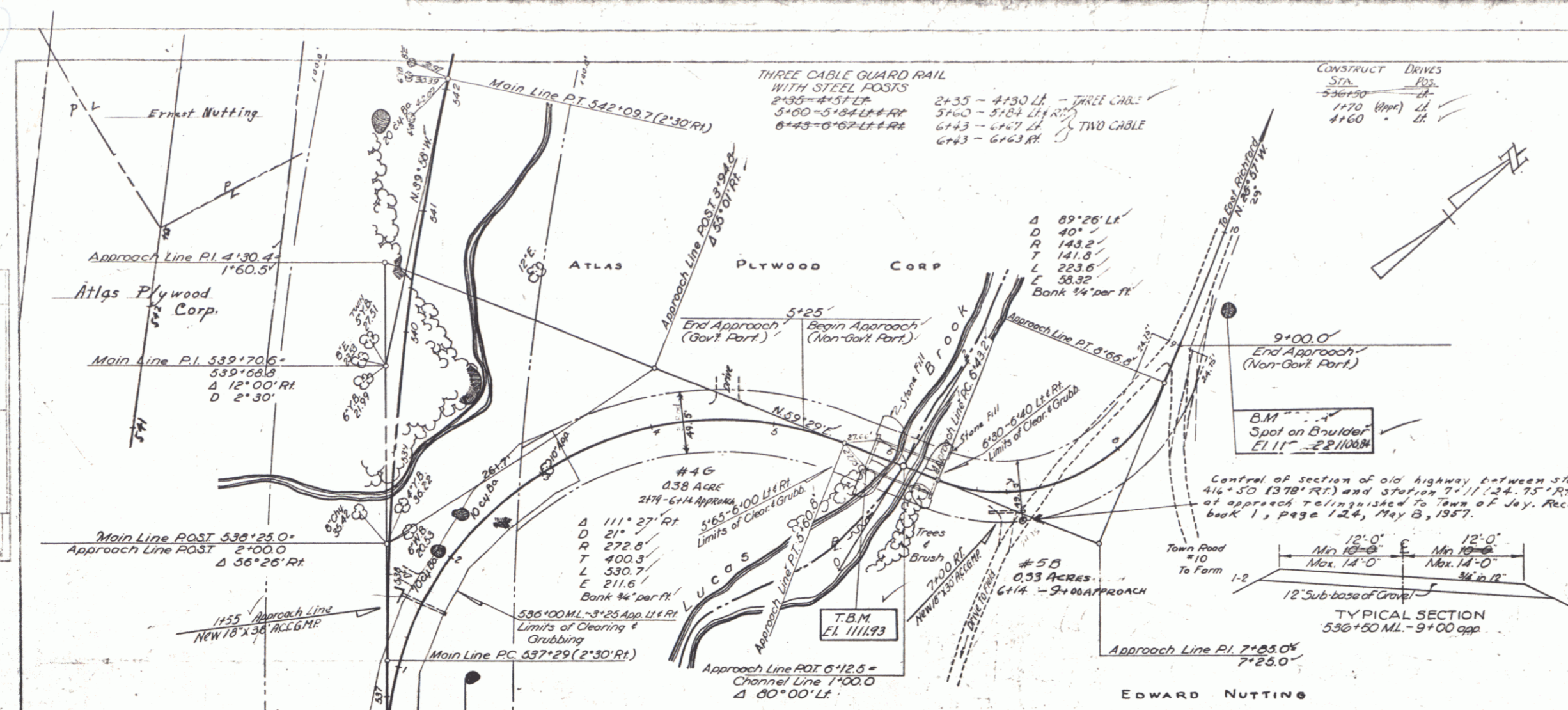


PLATE 1 - PLAN & PROFILE OF ROAD STATIONING  
 EXCEPT AS NOTED OR SHOWN  
 T.A.S. INC. INC. 540-1111

JAY  
 Project E. No. 137(A)  
 Sheet 25 of 120





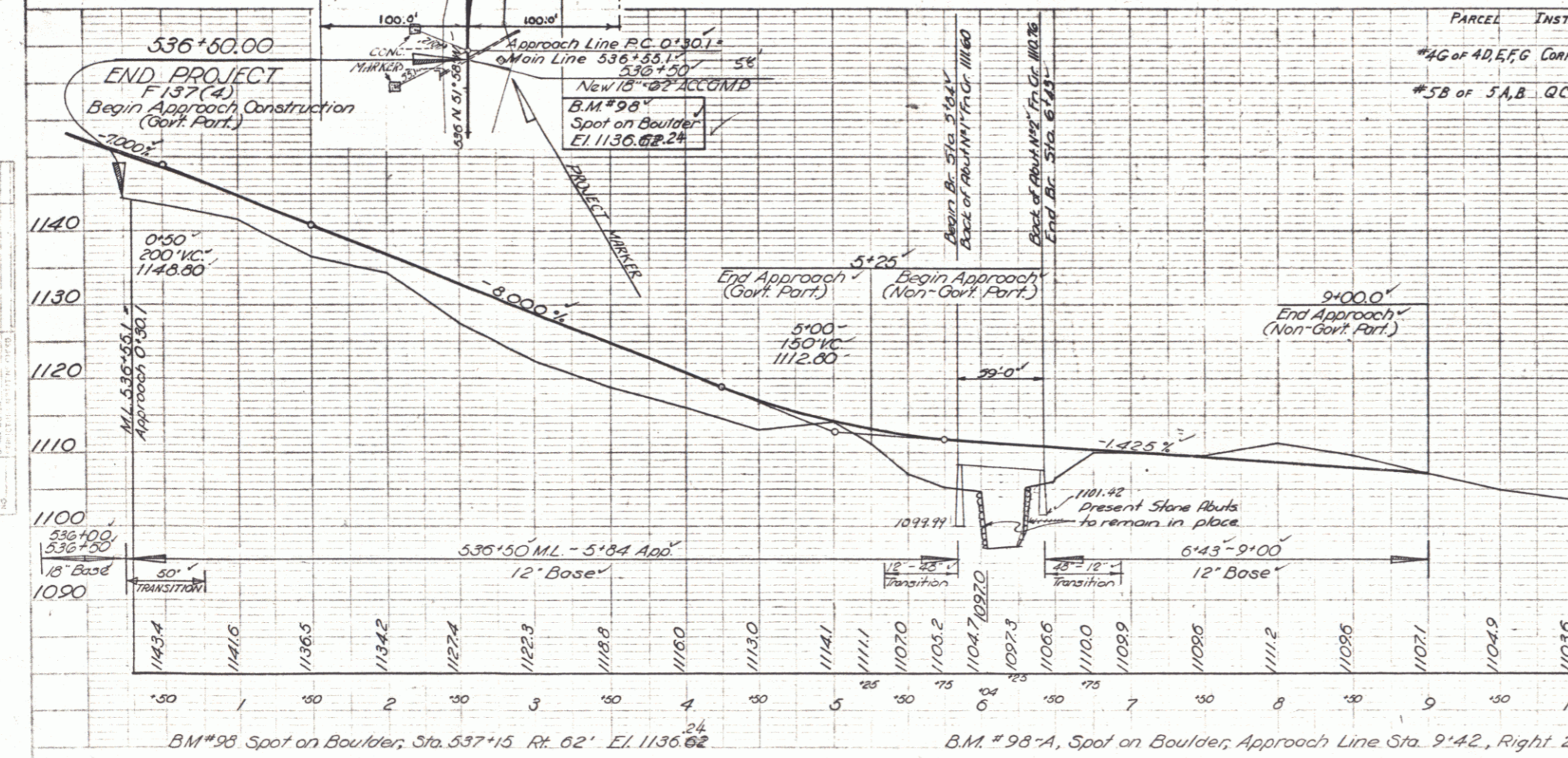


BRIDGE DATA		
Type	Span	W. Beam
Overall Span	27'	55'
Roadway Width	24'	24'
Clear Span on E of Road	24'	55'
" " Normal to Stream	24'	55'
Max. H.W. Elev.	1106'	1106'
Normal H.W. Elev.	1104'	1104'
Waterway to Low Bridge Seat	196'	320'
Stream Velocity	rapid	light
Drift		
Scour		

ESTIMATED QUANTITIES (BRIDGE ONLY)		
Item 106-A Channel Excavation of Earth	311	320 CY
" 107 Structure Excavation (Mod)	96	60 CY
" 401-C Concrete Class C (Mod)	93	110 CY
" 402 Reinforcing Steel	11000	11000 lbs
" 403-A Structural Steel	39363	39363 lbs
" 521 Stone Fill	105	370 CY
" 542 Two Cable Guard Rail (on Bridge)	1184 LF	
" 401-B Concrete, Class B (Mod)	40	40 CY

LIST OF SHEETS (BRIDGE ONLY)		
No. 27	Plan & Profile (50 Scale)	
" 34	Detail of Abutment No. 1	
" 35	" " " 2	
" 47	Sid. Dwg. CI 245 (I) Superstructure	
" 48	S.B. 20, Details C, D, V, K, L	
" 48A	Channel Sections (2 Sheets)	

PARCEL	INSTR.	DATE	GRANTOR	PROJECT	GRANTEE	RECORDED	BOOK	PAGE	DATE	REMARKS
#46 of 40, E, F, G	COND. D.	9-3-53	ATLAS PLYWOOD CORP.		ST. OF VT.	JAY	13	313-315	9-14-53	PARCEL 46 - SHEET 27 SEE ALSO SHEETS 17, 25, 26, 26A
#5B of 5A, B	QCDD E.	8-26-53	EDWARD NUTTING		ST. OF VT.	JAY	13	308-319	9-14-53	PARCEL 5B - SHEET 27 SEE ALSO SHEETS 25, 26, 26A



PLAN  
SCALE: AS SHOWN  
DATE: 1953  
BY: JAY

PROFILE  
SCALE: AS SHOWN  
DATE: 1953  
BY: JAY

JAY  
Proj. F No. 137(4)  
Sheet 27 of 170