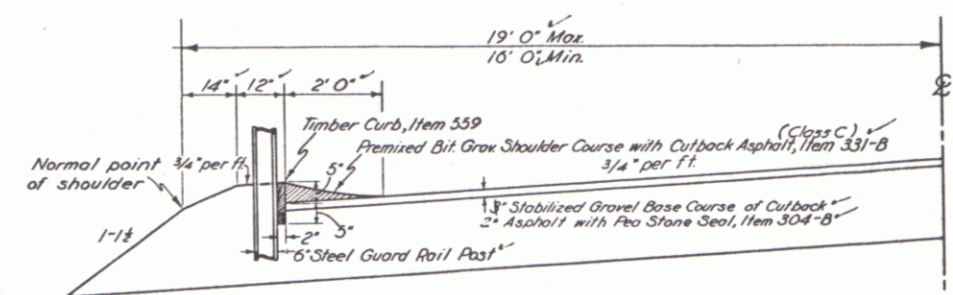


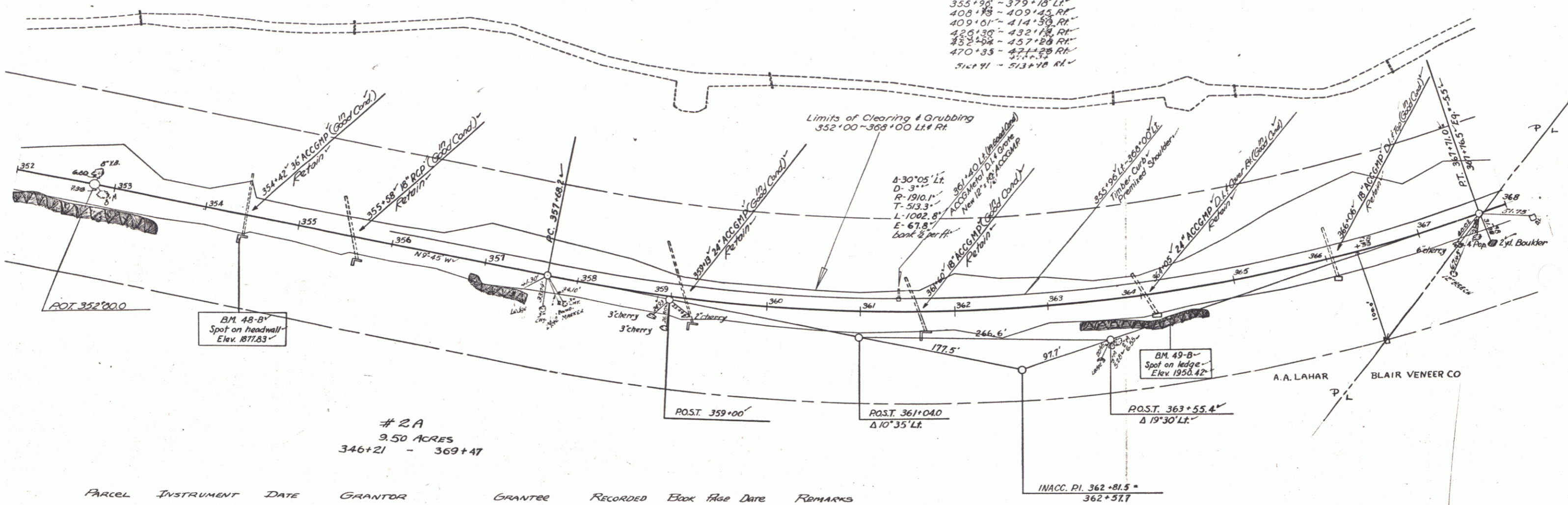
THREE CABLE GUARD RAIL
WITH STEEL POSTS Rt
Lt. 352+00 - 368+00

FED. ROAD DIST. NO.	STATE	PROJ. NO.	FISCAL YEAR	SHEET NO.	TOTAL SHEETS
9	VT.				



DETAIL OF
TIMBER CURB
& PREPARED SHOULDER

355+96 - 379+18 Lt.
408+18 - 409+45 Rt.
409+01 - 414+38 Rt.
426+30 - 432+18 Rt.
432+24 - 457+28 Rt.
470+33 - 471+28 Rt.
512+11 - 513+18 Rt.



BM 48-B
Spot on headwall
Elev. 1877.83

BM 49-B
Spot on ledge
Elev. 1958.42

2 A
9.50 ACRES
346+21 - 369+47

PARCEL	INSTRUMENT	DATE	GRANTOR	GRANTEE	RECORDED	BOOK	PAGE	DATE	REMARKS
2A	W.D.O.E.	8-25-41	ARTHUR A. LAHAR	Sec. of Vt.	JAY	13	2389	10-24-41	See NS-FAP 137C(1) 1942

JAY

Surveyed by G. Lane
Designed by
Drawn by
Traced by R. Fraser
Checked by
Series F No. 137(4) Filed
Sheet 9 of 170 Sheets