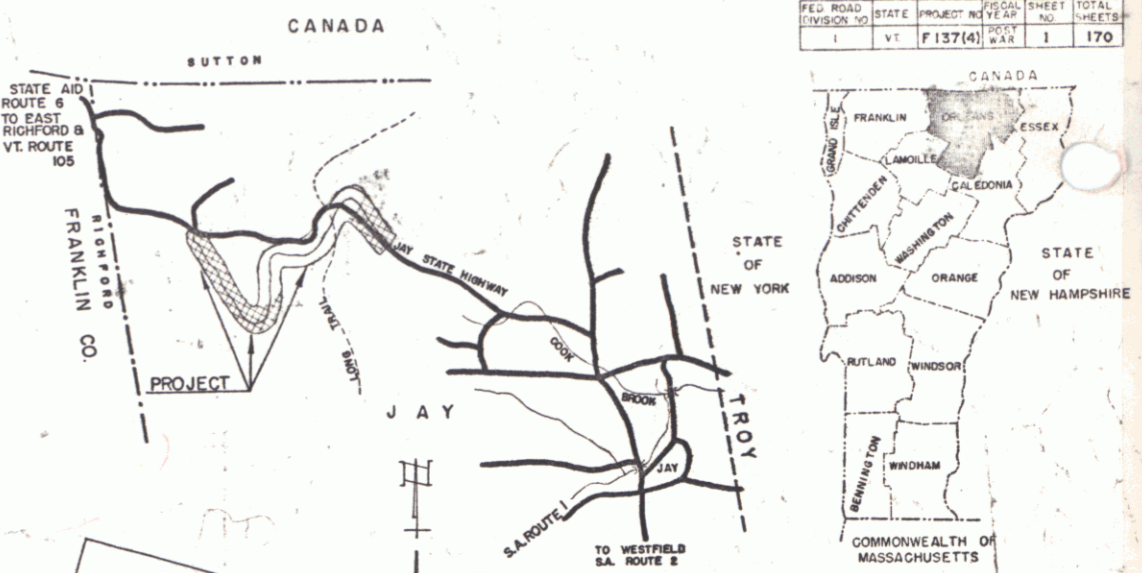


INDEX OF SHEETS

SHEET NO	TITLE PAGE
1	TITLE PAGE
2	TYPICAL CROSS SECTION OF IMPROVEMENT STABILIZED GRAVEL BASE COURSE OF OUTSIDE APPROACH TO RICHFORD VIA JAY MOUNTAIN
3	QUANTITY SHEET (1104)
4	QUANTITY SHEET (1104)
5-6	QUANTITY SHEETS (DRAINAGE)
7-27	PLAN AND PROFILE SHEETS
28	DETAILS OF ABUTMENT NO. 40445-40446
29	DETAILS OF SUPERSTRUCTURE 40445-40446
30	DETAILS OF 12" COMP 40445
31	DETAILS OF 8" COMP 40445
32	DETAILS OF 8" COMP 40445
33	DETAILS OF 8" COMP 40445
34	DETAILS OF ABUTMENT NO. 1 APPROACH 4048
35	DETAILS OF ABUTMENT NO. 2 APPROACH 4048
36	REINFORCING STEEL SCHEDULE 4048-4048
37	STANDARD STRUCTURE SHEET (DRAINAGE AND MARKERS)
38	STANDARD STRUCTURE SHEET (DITCHES)
39	STANDARD STRUCTURE SHEET (TYPICAL GRADING)
40	STANDARD STRUCTURE SHEET (BARRICADES, SIGNS AND LIGHTS)
41	STANDARD STRUCTURE SHEET (THREE CABLE GUARD RAIL)
42	STANDARD STRUCTURE SHEET (ACQUA DROP BUILT)
43	STANDARD STRUCTURE SHEET (THREE CABLE GUARD RAIL WITH STEEL POSTS)
44	STANDARD STRUCTURE SHEET (BARRICADES, SIGNS AND LIGHTS)
45	STANDARD STRUCTURE SHEET (BRIDGE DETAILS)
46	STANDARD STRUCTURE SHEET (BRIDGE DETAILS)
47	STANDARD STRUCTURE SHEET (BRIDGE SUPERSTRUCTURE)
48-154	CROSS SECTIONS
155-160	12" COMP PIPE STRUCTURE SECTIONS
161-165	CHANNEL SECTIONS
166-170	EARTHWORK SHEETS

STANDARD STRUCTURE SHEET APPROVED BY THE CHIEF ENGINEER, VERMONT STATE DEPARTMENT OF HIGHWAYS
S-40 JUNE 10, 1950

STATE OF VERMONT
DEPARTMENT OF HIGHWAYS
Proposed Improvement
FEDERAL PROJECT
TOWN OF JAY
COUNTY OF ORLEANS



PROJECT NAME & NUMBER
JAY F137(4)

TYPE
STABILIZED GRAVEL

PAVEMENT AREA
51,740 S.Y.

RECORD PLANS

MATERIALS

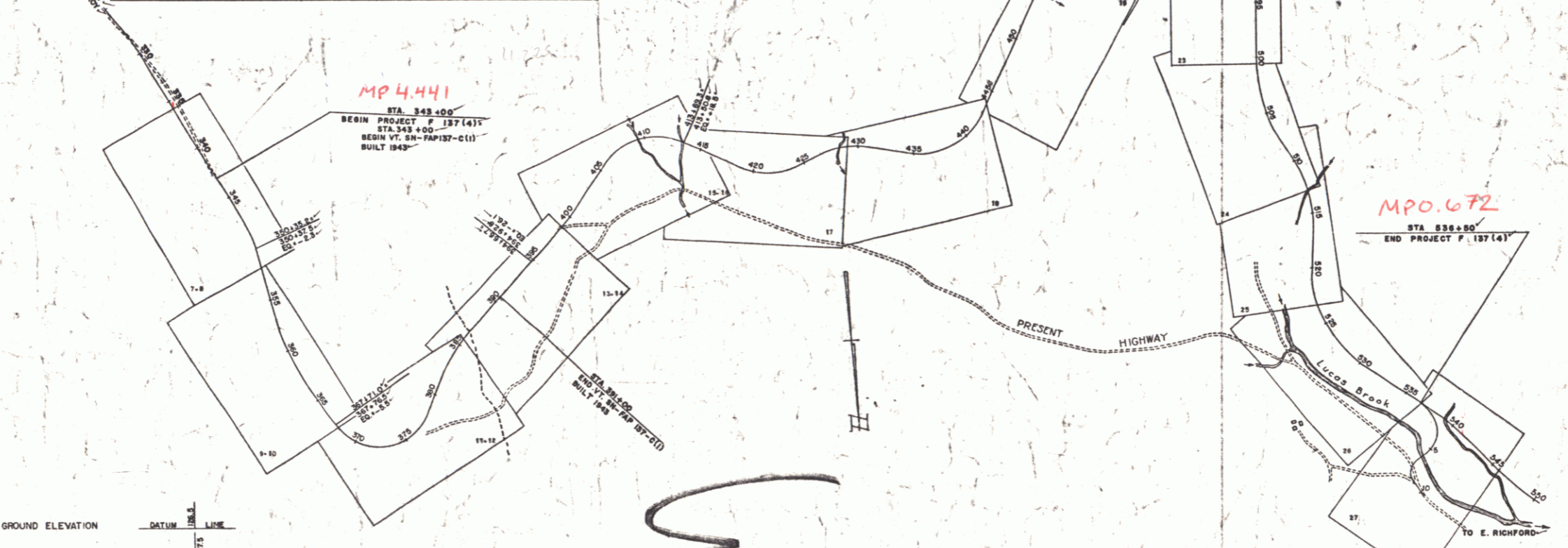
SUB-BASE OF GRAVEL-DIPAWAY, E. Richford, Vt.	REINFORCING STEEL-Wormat Struct. Steel Corp. Burlington, Vt.
SUB-BASE OF CRUSHED GRAVEL-Sturtevant, Vt.	STRUCTURAL STEEL-Vt. Struct. Steel Corp. Burlington, Vt.
GUTBACK ASPHALT-Franklin, Vt.	ACCOMP. PIPE 12" - N.E. Metal Pipe Co., Palmer, Mass.
PEA-STONE FOR SEAL - Green Mine, Eden, Vt.	ACCOMP. PIPE 12" - N.E. Metal Pipe Co., Palmer, Mass.
SAND FOR SEAL - Coulter's Pt., Conroy, Vt.	ACCOMP. PIPE 8" - Boston Pipe and Foundry Co., Boston, Mass.
CEMENT - Franklin, Vt.	CABLE FOR GUARD RAIL - American Wire Co.
COURSE AGGR. FOR CONCRETE - Johnson, Johnson, Vt.	GUARD RAIL PAINT - Brown Chemicals, Inc., Essex, Vt.

CONTRACTOR - CHAFFIN CONSTRUCTION CO., INC. CONTRACT DATED - JUL 8, 1953
RESIDENT ENGR. - H. E. August CONTRACT STARTED - OCT 12, 1953
INSPECTORS - H. E. August - H. E. August CONTRACT COMPLETED - OCT 16, 1956
RECORD PLANS - H. E. August CONTRACT ACCEPTED - OCT 17, 1956

NORTH TROY-JAY MOUNTAIN-EAST RICHFORD ROAD
BEGINNING AT A POINT ON THE STATE ROAD BETWEEN NORTH TROY AND EAST RICHFORD VIA JAY MOUNTAIN; SAID POINT BEING 4.34 MILES WEST OF THE TROY-JAY TOWN LINE AND EXTENDING WESTERLY 19,859.4 FEET.

LENGTH OF PROJECT 19,859.4 FT=3.761 MILES

(To Be Returned to R.O.W.'s Division)
OWN FILE
RIGHT-OF-WAY DIVISION
FERRERIAL
OWN OF 4105



CONTRACTOR: CHAFFIN CONSTRUCTION CO., INC.
LOCATION: BEGINNING AT A POINT ON THE STATE ROAD BETWEEN NORTH TROY AND EAST RICHFORD VIA JAY MOUNTAIN, SAID POINT BEING 4.34 MILES WEST OF THE TROY-JAY TOWN LINE AND EXTENDING WESTERLY 19,859.4 FEET.

PROJECT: JAY
NUMBER: F 137(4)
TYPE: STABILIZED GRAVEL COURSE

DATE: AUG 19 1953

GROUND ELEVATION - DATUM - LINE

GRADE ELEVATION - DATUM - LINE

CURVE DATA

DEFLECTION OF ANGLE	Δ
DEGREE OF CURVE	D
RADIUS OF CURVE	R
TANGENT DISTANCE	T
LENGTH OF CURVE	L
EXTERNAL DISTANCE	E
POINT OF INTERSECTION	P.I.
POINT OF CURVE	P.C.
POINT OF TANGENT	P.T.
POINT ON TANGENT	P.O.T.
POINT ON SUB-TANGENT	P.O.S.T.

SCALES

TITLE	1" = 600'
TYPICAL	1" = 2'
PLAN	1" = 50'
PROFILE HORIZONTAL	1" = 50'
PROFILE VERTICAL	1" = 10'
CROSS-SECTIONS	1" = 5' & 10'

APPROVED: [Signature] DATE: Aug 19 1953

APPROVED: [Signature] DATE: AUG 19 1953

APPROVED: [Signature] DATE: Aug 24 1953

APPROVED: [Signature] DATE: AUG 19 1953

APPROVED: [Signature] DATE: AUG 20 1953

NOTE: ANY FURTHER INFORMATION CONCERNING FINAL QUANTITIES, AMOUNTS OR OTHER DETAILS RELATIVE TO THIS PROJECT MAY BE FOUND IN EITHER THE FIELD BOOKS OR THE ESTIMATE FILE.

Route VT105
Pin# 00R165

DEPARTMENT OF COMMERCE
BUREAU OF PUBLIC ROADS

APPROVED: [Signature] DATE: []

DISTRICT ENGINEER

PROJECT: F NO. 137(4)
SHEET 1 OF SHEETS 170

105