

NEW CULVERT REQUIRED
 STA 77+01 CONSTRUCT NEW 15" R.C. PIPE LENGTH 36 FT.
 REIN. CONCRETE CLASS B(1200) 2.6 CU. YDS.
 REIN. STEEL 33 LBS.

STA 85+32 CONSTRUCT NEW BOX CULVERT 4'x3'
 REIN. CONCRETE CLASS A(1200) 16 CU. YDS.
 REIN. STEEL 1038 LBS.

CULVERT REPAIRS REQUIRED
 STA 79+33 EXISTING STRUCTURE 18" CORR. METAL PIPE
 CONSTRUCT EXTENSION 18" CORR. GALV. MET. PIPE ON LEFT WITH
 STRAIGHT HEADWALL LENGTH 24 FT.
 REIN. CONCRETE CLASS B(1200) 1.6 CU. YDS.
 REIN. STEEL 17 LBS.

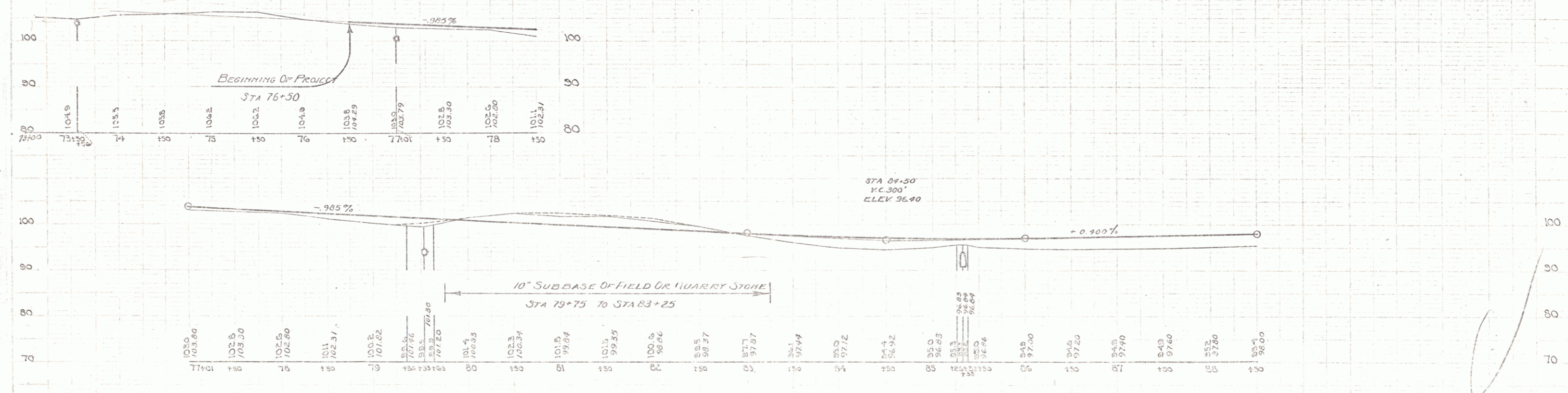
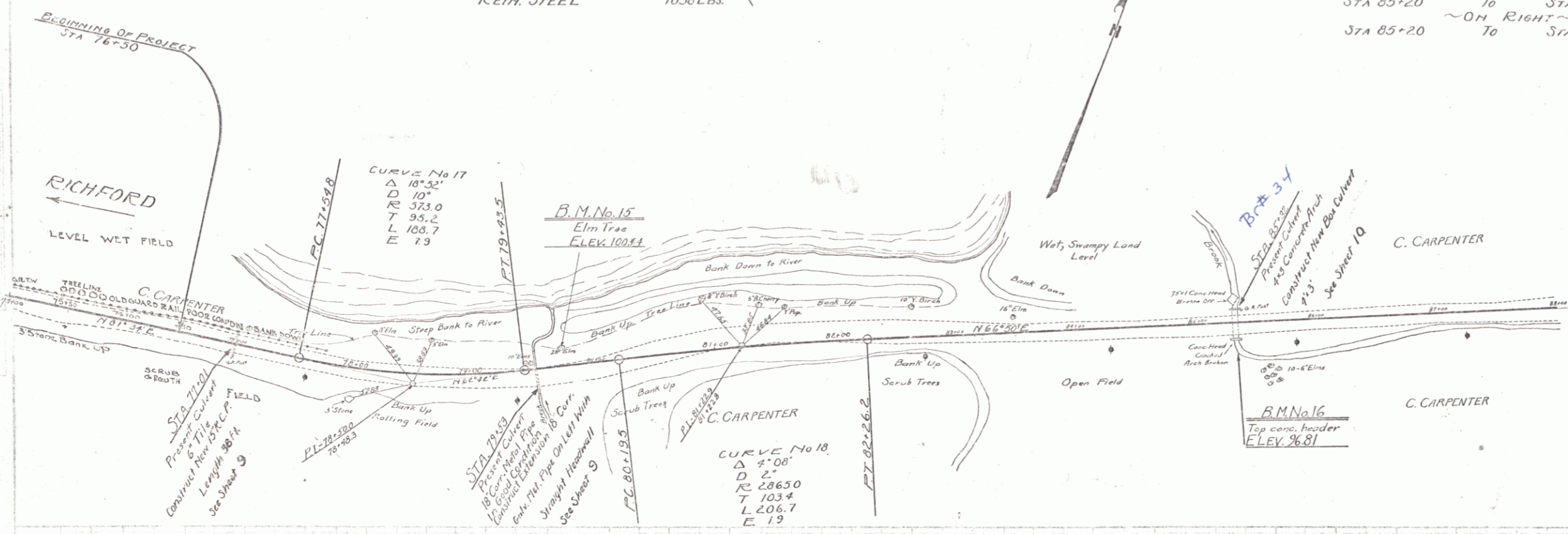
NEW WOOD GUARD RAIL REQUIRED

~OH RIGHT~	STA 76+89	To	STA 77+13	LENGTH 24 LIN. FT.	
~OH RIGHT~	STA 79+41	To	STA 79+65	" 24 " "	
~OH LEFT~	STA 85+20	To	STA 85+44	" 24 " "	
~OH RIGHT~	STA 85+20	To	STA 85+44	" 24 " "	
				TOTAL ON SHEET	96 LIN. FT.

FILE NO.	STATE	PROJ. NO.	YEAR	SHEET NO.	TOTAL SHEETS
9	VT	FRZOR	1928	3	23

NEW CABLE GUARD RAIL REQUIRED

~OH LEFT~	STA 76+50	To	STA 78+26	LENGTH 176 LIN. FT.	
~OH LEFT~	STA 79+41	To	STA 79+73	" 32 " "	
				TOTAL ON SHEET	208 LIN. FT.



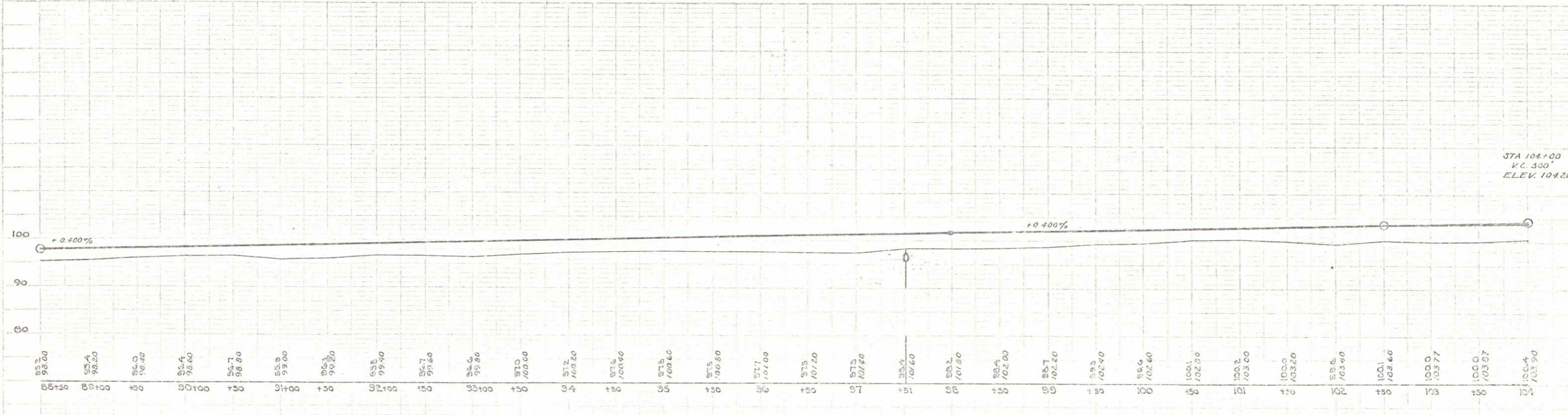
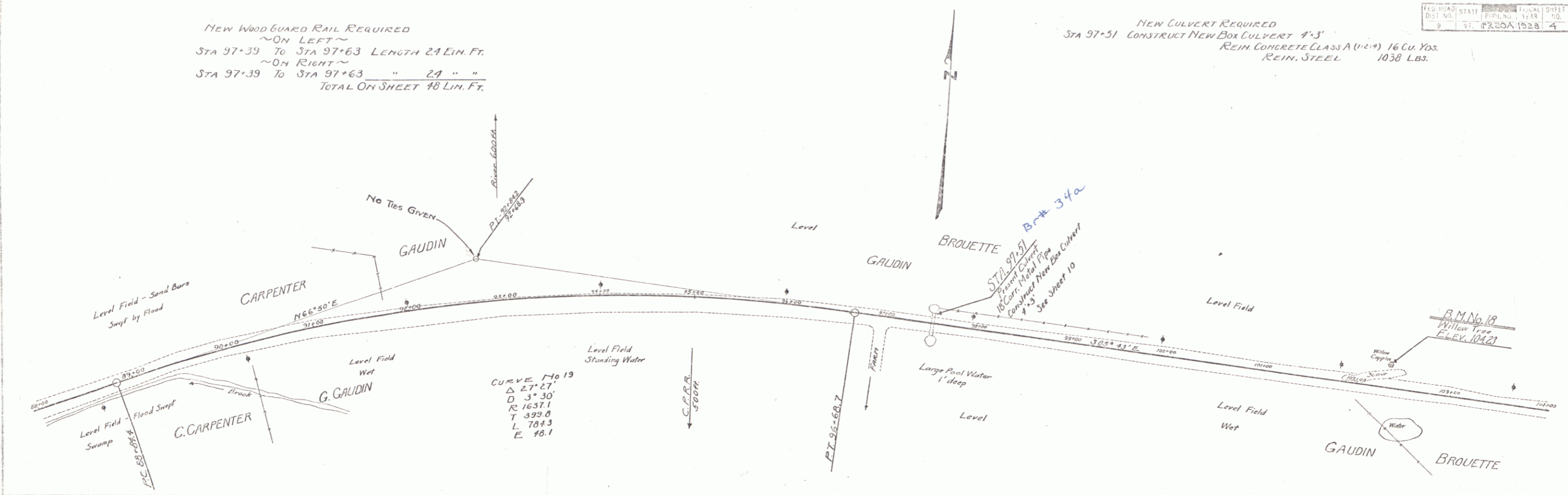
B.M. No. 16 - Top 7ft conc. header 3ft. arch south side road - ELEV. 96.81
 B.M. No. 15 - Spike in base - 28 Elm No. side road - ELEV. 100.41

SERIES 3
 SHEET 3

FED. ROAD DIST. NO.	STATE	FISCAL YEAR	TOTAL SHEETS	TOTAL SHEETS
9	VT	1928	4	23

NEW WOOD GUARD RAIL REQUIRED
 ~ON LEFT~
 STA 97+39 TO STA 97+63 LENGTH 24 LIN. FT.
 ~ON RIGHT~
 STA 97+39 TO STA 97+63 " 24 " "
 TOTAL ON SHEET 48 LIN. FT.

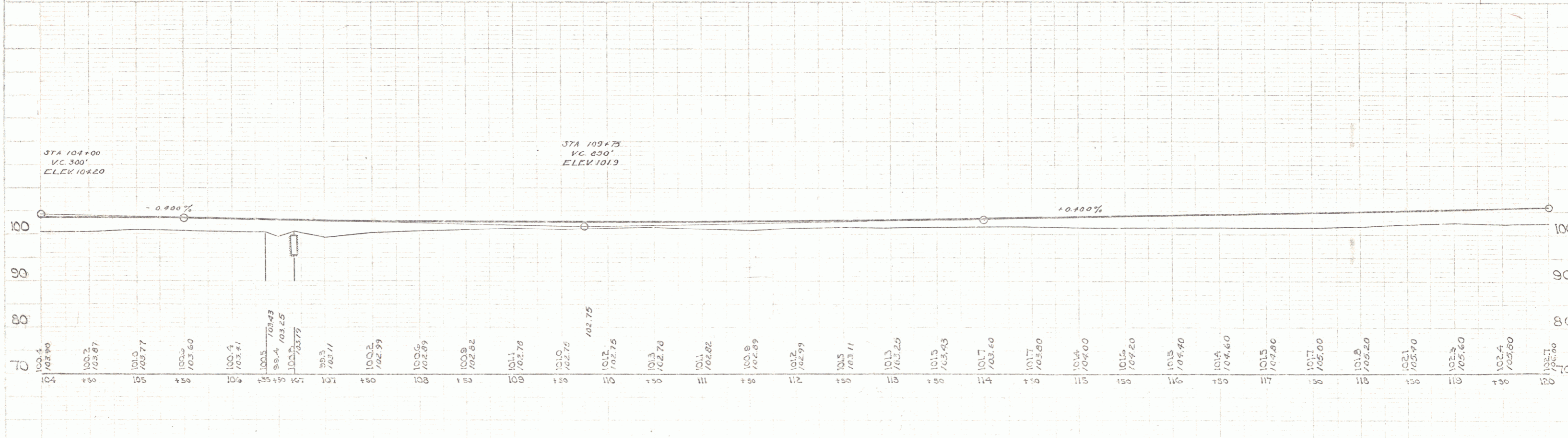
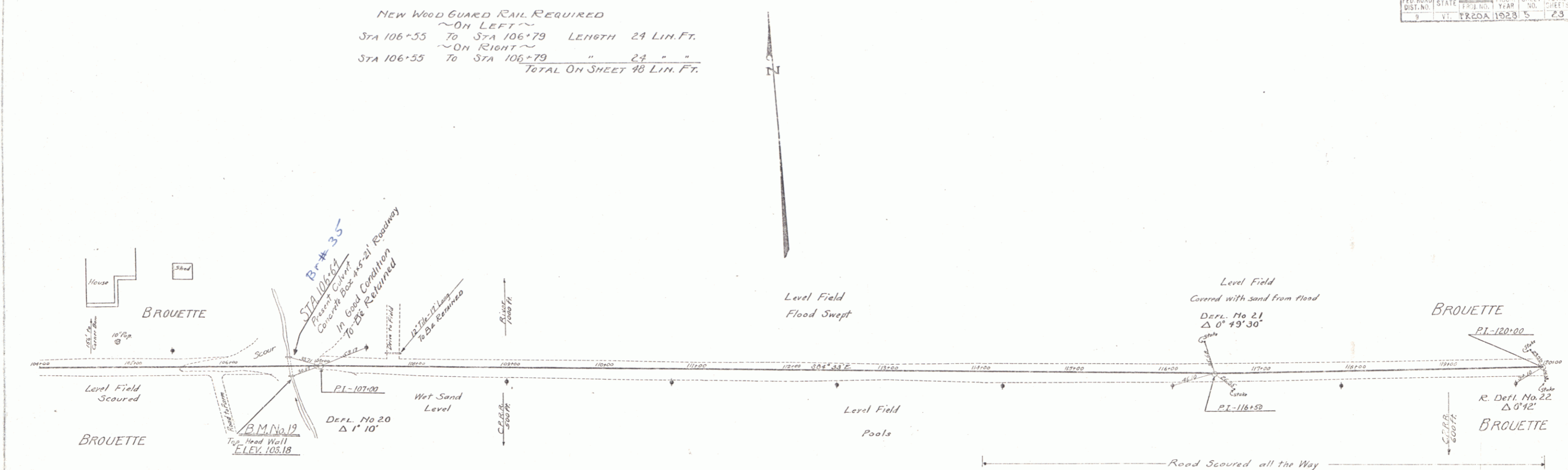
NEW CULVERT REQUIRED
 STA 97+51 CONSTRUCT NEW BOX CULVERT 4'-3"
 REIN. CONCRETE CLASS A (12"x14") 16 Cu. Yds.
 REIN. STEEL 1038 Lbs.



B.M. No. 17 - Spike in 5" Birch Left of Sta. 89+00± - ELEV. 98.10
 B.M. No. 18 - Spike in 4" Willow No. of road - ELEV. 104.23

Scale - P. No. 20A
 SHEET 4 OF 23

NEW WOOD GUARD RAIL REQUIRED
 ~ ON LEFT ~
 STA 106+55 TO STA 106+79 LENGTH 24 LIN. FT.
 ~ ON RIGHT ~
 STA 106+55 TO STA 106+79 " 24 " "
 TOTAL ON SHEET 48 LIN. FT.

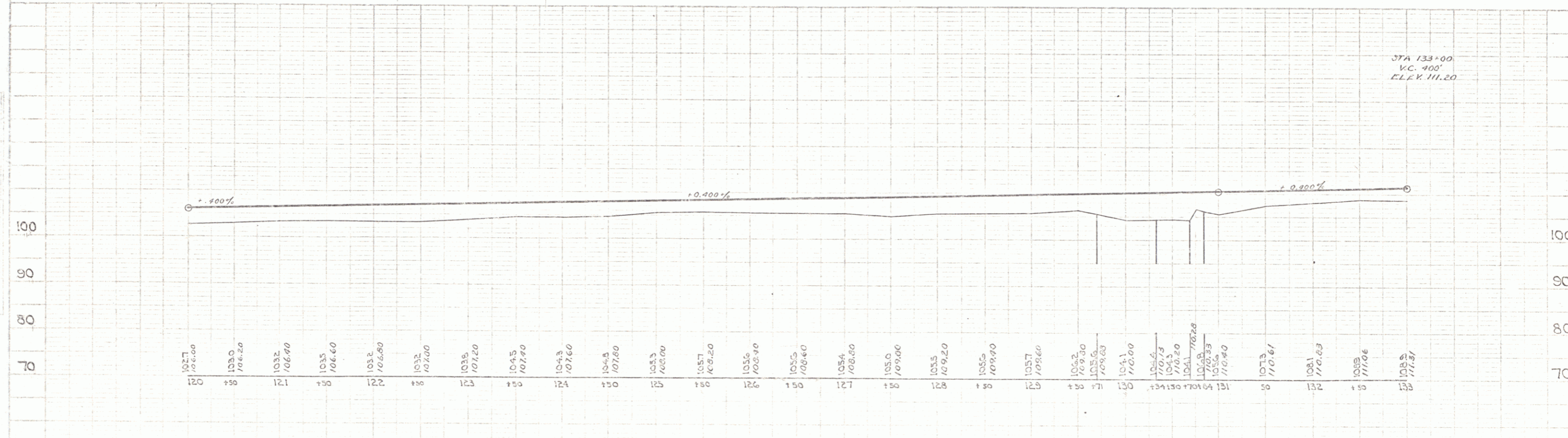
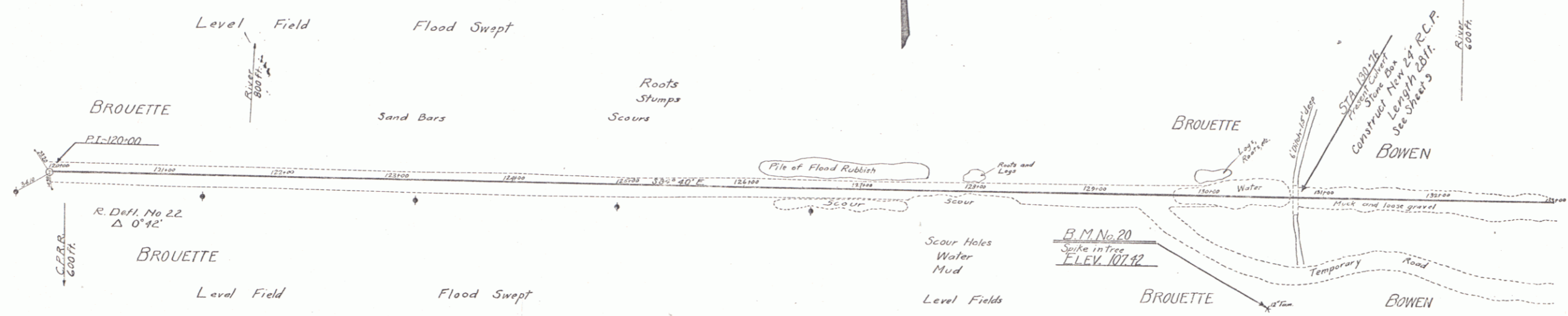


B. M. No. 19 ~ Top conc. head wall, 5 ft arch culvert ~ ELEV. 103.18

NEW WOOD GUARD RAIL REQUIRED
 ~ ON LEFT ~
 STA 130+64 To STA 130+88 LENGTH 24 LIN. FT.
 ~ ON RIGHT ~
 STA 130+64 To STA 130+88 " 24 " "
 TOTAL ON SHEET 48 LIN. FT.

NEW CULVERT REQUIRED
 STA 130+76 CONSTRUCT NEW 24" REIN CONC. PIPE LENGTH 28 FT.
 REIN CONCRETE CLASS A (11:2:4) 2.6 Cu. Yds.
 REIN STEEL 59 LBS.

FED. ROAD DIST. NO.	STATE	FISCAL YEAR	SHEET NO.	TOTAL SHEETS
	FR	1928	6	23



B.M. No. 20 - Spike in base 12" tamarack - ELEV. 107.42

Scale 1" = 20' HORIZ. 1" = 5' VERT. 6

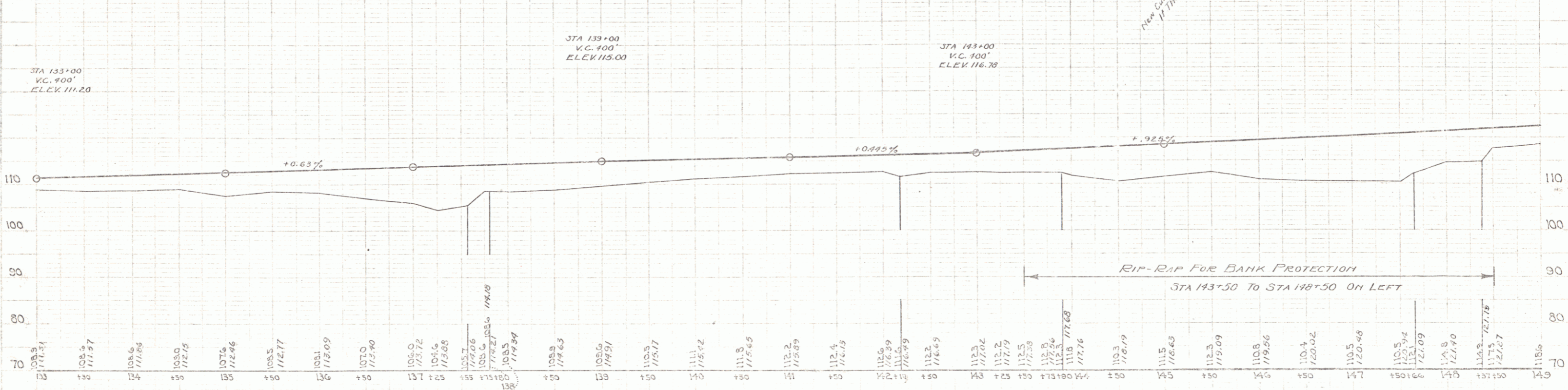
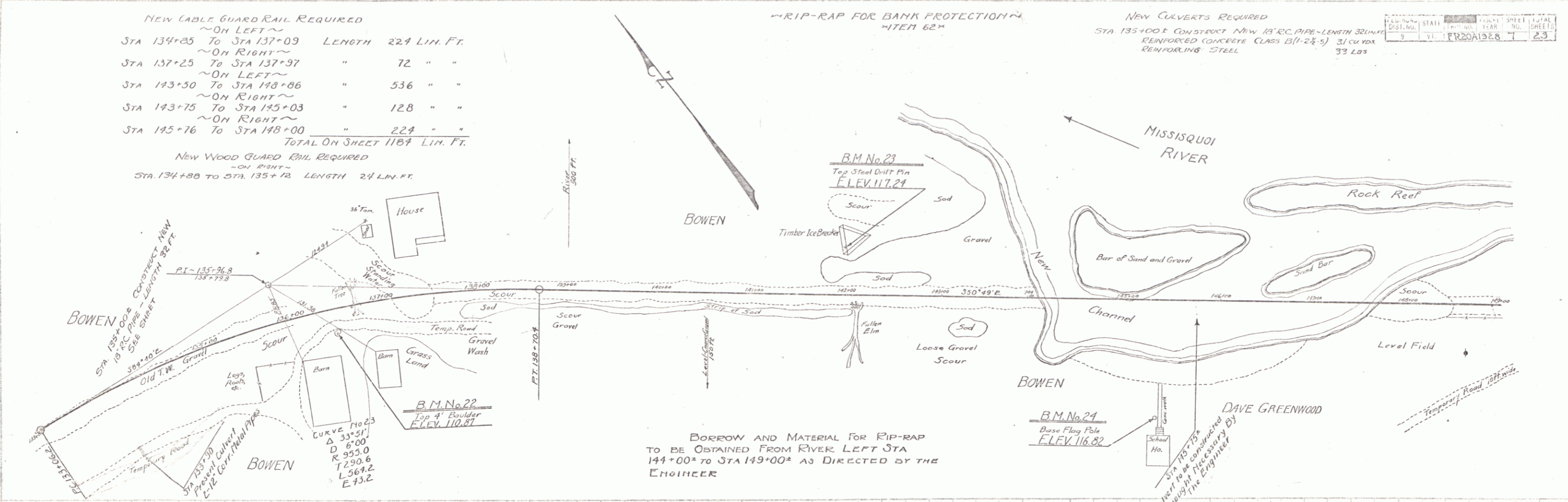
NEW CABLE GUARD RAIL REQUIRED
 ~ON LEFT~
 STA 134+85 To STA 137+09 LENGTH 224 LIN. FT.
 ~ON RIGHT~
 STA 137+25 To STA 137+97 " 72 " "
 STA 143+30 To STA 148+06 " 536 " "
 STA 143+75 To STA 145+03 " 128 " "
 STA 145+76 To STA 148+00 " 224 " "
 TOTAL ON SHEET 1184 LIN. FT.

NEW WOOD GUARD RAIL REQUIRED
 ~ON RIGHT~
 STA 134+88 To STA 135+12 LENGTH 24 LIN. FT.

~RIP-RAP FOR BANK PROTECTION~
 ~WIDTH 62'~

NEW CULVERTS REQUIRED
 STA 135+00 & CONCRETE NEW 18" R.C. PIPE - LENGTH 32 L.F.
 REINFORCED CONCRETE CLASS B (1-2 1/2") 31 cu yds
 REINFORCING STEEL 33 LBS

POSTING	STATION	FOOTING	PIECE	SHEET	TOTAL SHEETS
9	VI	FR	20	15	23



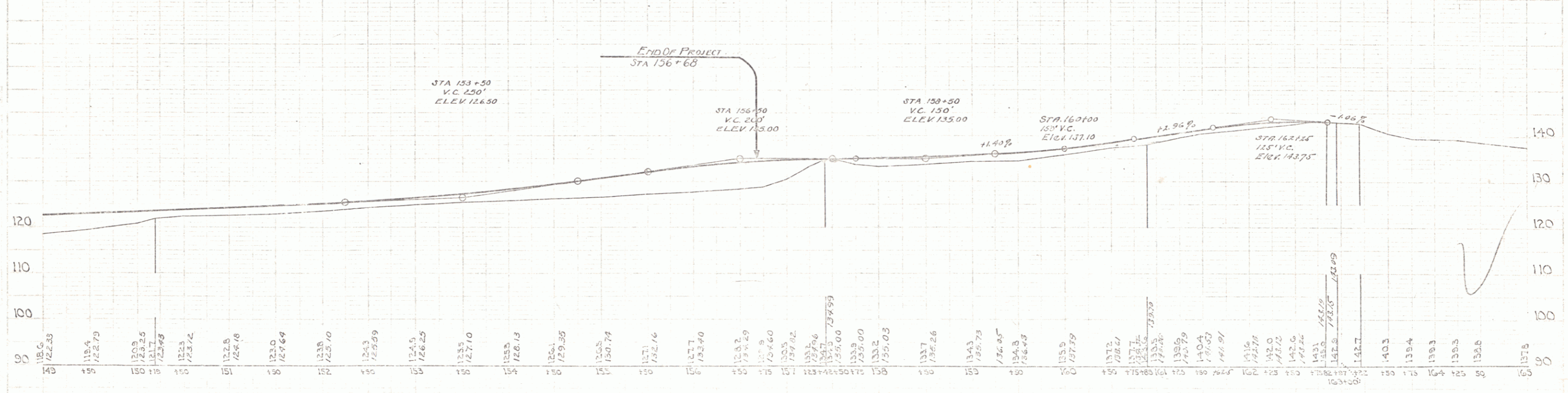
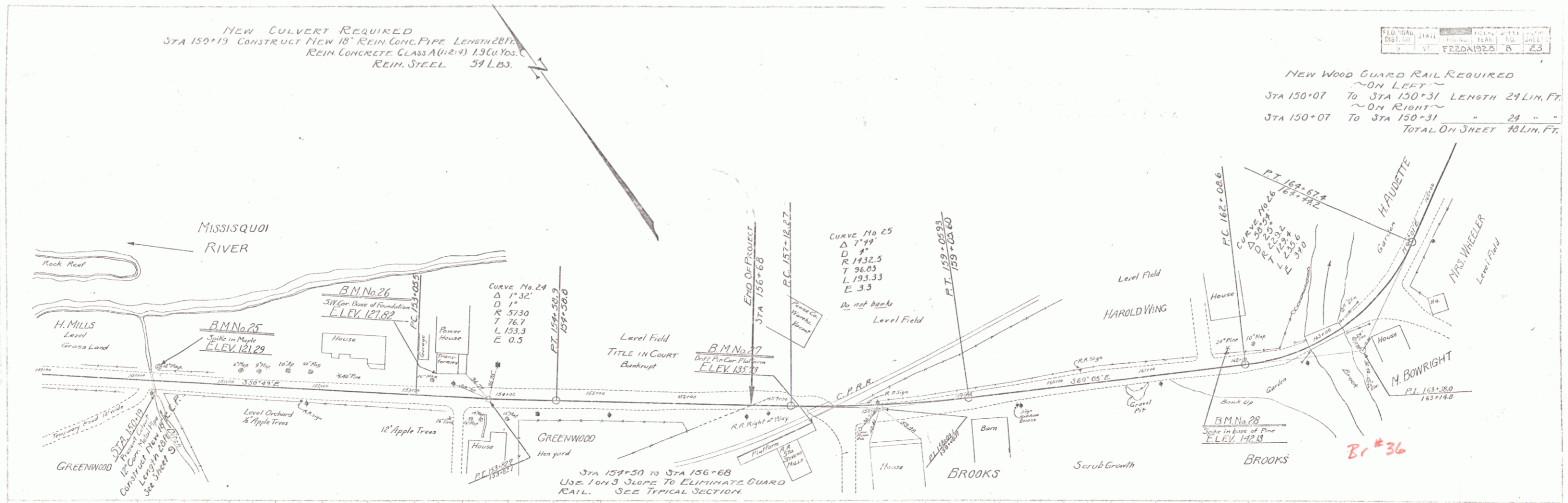
B.M. No. 21 - Foundation Stone S.W. cor. red barn shed Bowen Farm - ELEV. 111.20
 B.M. No. 22 - Top 4' Boulder between Bowen house and barn - ELEV. 110.87
 B.M. No. 23 - Top Steel Drift Pin West side timber ice breaker No. side road - ELEV. 117.24
 B.M. No. 24 - Top Conc. Base Flag Pole at School House - ELEV. 116.82

Series C. No. 204
 SHEET 7 OF 23

NEW CULVERT REQUIRED
 STA 150+13 CONSTRUCT NEW 18" REIN. CONC. PIPE LENGTH 281'
 REIN. CONCRETE CLASS A (1:2:4) 1.9 Cu. Yds.
 REIN. STEEL 59 LBS.

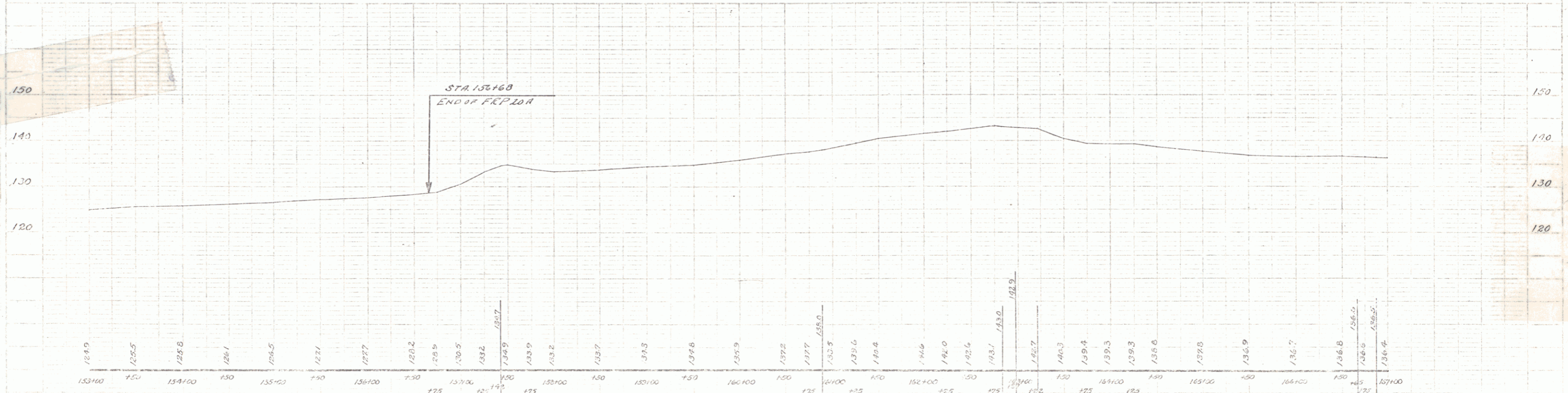
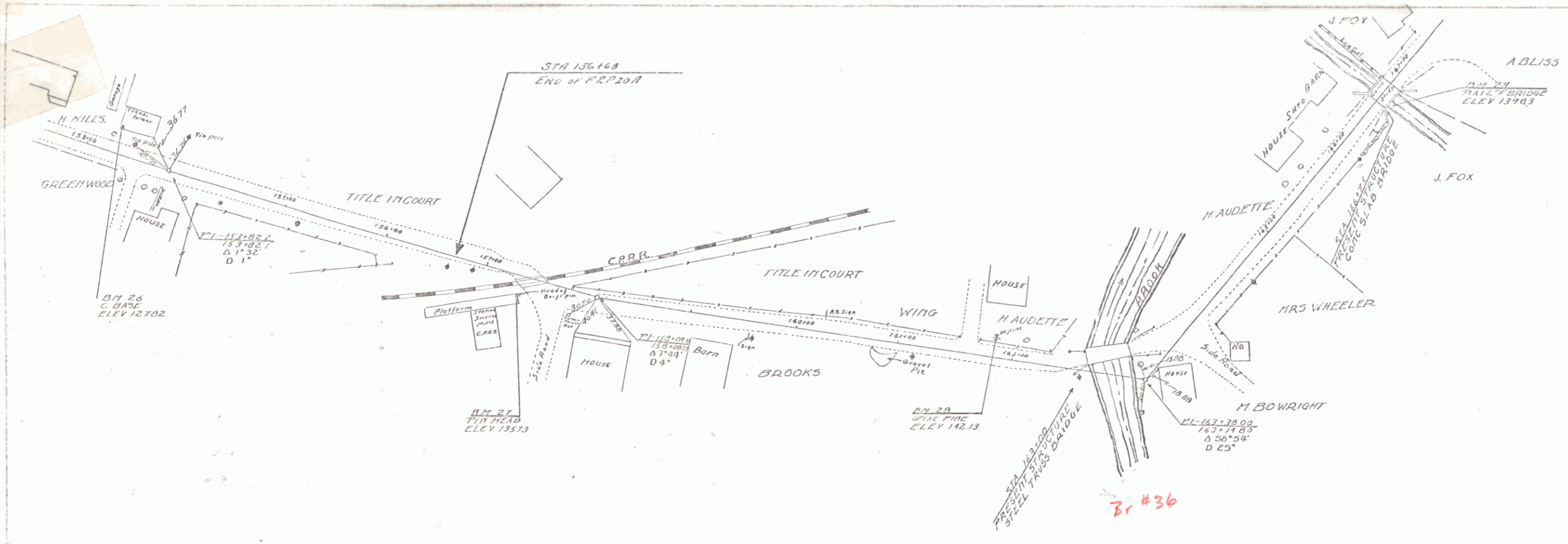
NEW WOOD GUARD RAIL REQUIRED
 ~ON LEFT~
 To STA 150+31 LENGTH 24 LIM. FT.
 ~ON RIGHT~
 To STA 150+31 " 24 " "
 TOTAL ON SHEET 48 LIM. FT.

FILE NO.	DATE	BY	NO.	SHEET
100-1925	1925	R	23	



BM No. 25 - Spike in base 12" Maple No. of road STEVENS MILLS - ELEV. 121.29
 BM No. 26 - S.W. cor. concrete base transformer sta at Power House - ELEV. 127.82
 BM No. 27 - Top draft pin NE corner timber platform R.R. sta STEVENS MILLS - ELEV. 125.73
 BM No. 28 - Spike in base 24" W.F. in front grey house - ELEV. 142.13

SERIES LR No. 200
 Size 8



B.M. NO 26 SW CORNER OF CONC. BASE OF TRANSFORMER ELEV 127.82
 B.M. NO 27 SPIKE IN BASE 24" PINE IN FRONT OF GREY HOUSE ELEV 142.13
 B.M. NO 29 TOP OF CONC. RAIL R.C. BRIDGE SE SIDE ROAD ELEV 139.53

SERIES 110
SHEET 9 OF 23