

NEW CULVERT REQUIRED
 STA 77+01 CONSTRUCT NEW 15" R.C. PIPE LENGTH 36 FT.
 REIN. CONCRETE CLASS B(14) 2.6 CU. YDS.
 REIN. STEEL 33 LBS.

STA 85+32 CONSTRUCT NEW BOX CULVERT 4'x3'
 REIN. CONCRETE CLASS A(12) 16 CU. YDS.
 REIN. STEEL 1038 LBS.

CULVERT REPAIRS REQUIRED
 STA 79+33 EXISTING STRUCTURE 18" CORR. METAL PIPE
 CONSTRUCT EXTENSION 18" CORR. GALV. MET. PIPE ON LEFT WITH
 STRAIGHT HEADWALL LENGTH 24 FT.
 REIN. CONCRETE CLASS B(14) 1.6 CU. YDS.
 REIN. STEEL 17 LBS.

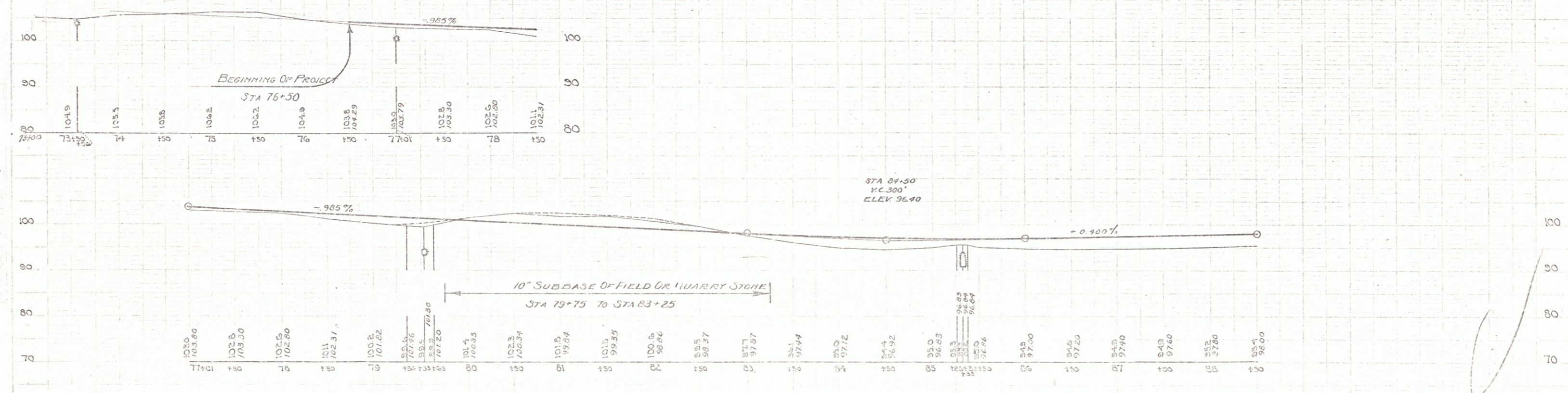
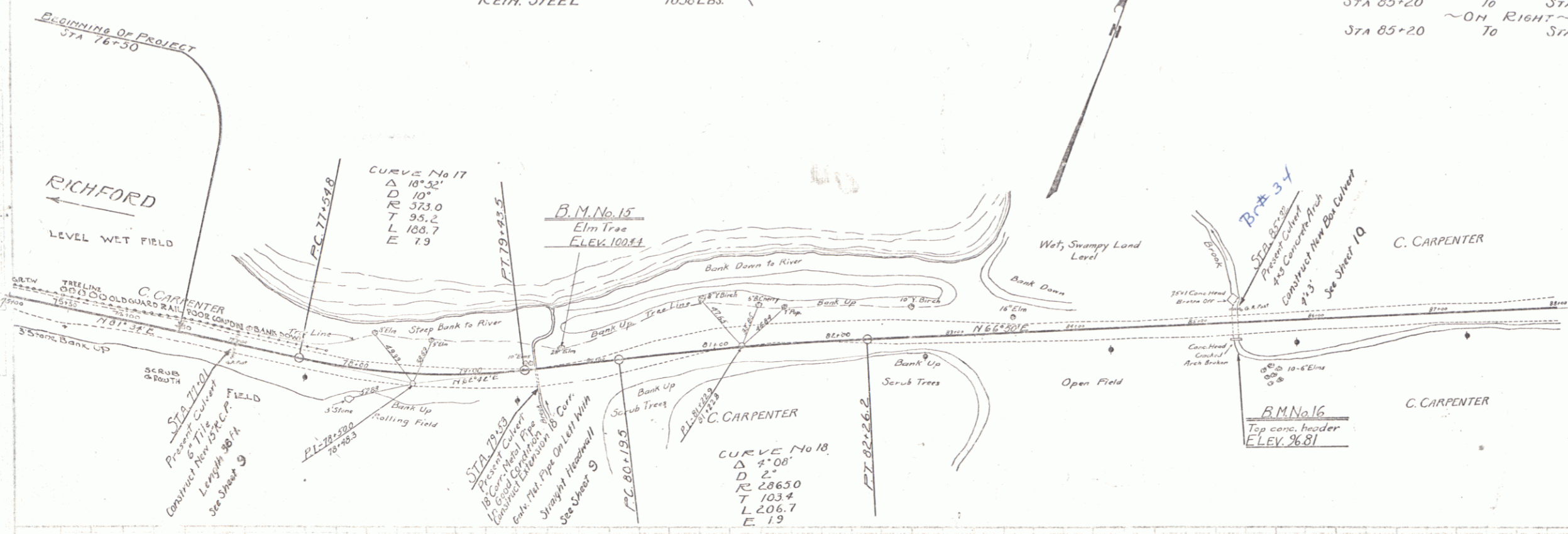
NEW WOOD GUARD RAIL REQUIRED

~OH RIGHT~	STA 76+89	To	STA 77+13	LENGTH 24 LIN. FT.
~OH RIGHT~	STA 79+41	To	STA 79+65	" 24 " "
~OH LEFT~	STA 85+20	To	STA 85+44	" 24 " "
~OH RIGHT~	STA 85+20	To	STA 85+44	" 24 " "
				TOTAL ON SHEET 96 LIN. FT.

FILE NO.	STATE	PROJ. NO.	YEAR	SHEET NO.	TOTAL SHEETS
9	VT	FRZOR	1928	3	23

NEW CABLE GUARD RAIL REQUIRED

~OH LEFT~	STA 76+50	To	STA 78+26	LENGTH 176 LIN. FT.
~OH LEFT~	STA 79+41	To	STA 79+73	" 32 " "
				TOTAL ON SHEET 208 LIN. FT.



B.M. No. 16 - Top 7ft conc. header 3ft. arch south side road - ELEV. 96.81
 B.M. No. 15 - Spike in base - 28 Elm No. side road - ELEV. 100.41