

CABLE GUARD RAIL REQUIRED  
 STA 57+00-62+62 Left - 1162 lin. ft  
 " 63+30-73+00 " - 370

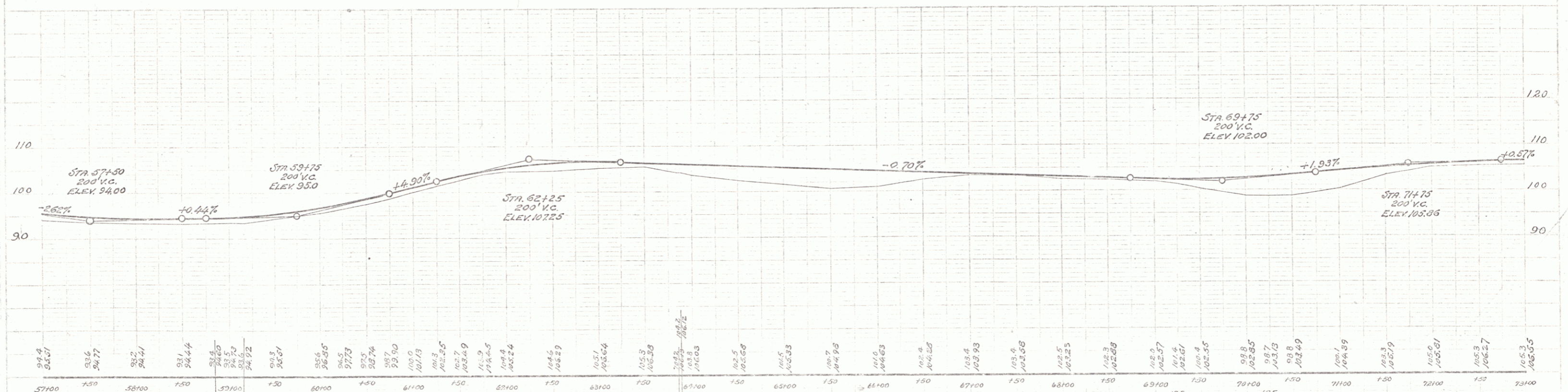
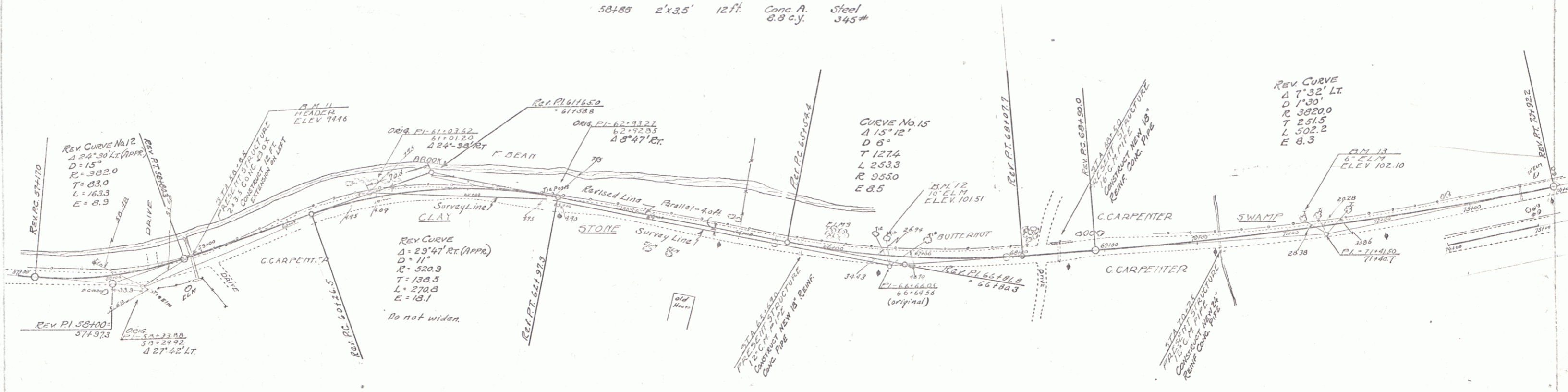
WOOD GUARD RAIL REQ  

STA	Left	Right
58+85	-	24 ft
65+69	-	24 ft
68+30	-	24 ft
70+25	-	24 ft

NEW CULVERTS REQUIRED  

REINFC	CONC.	PIPE	Length	Conc. B	Steel
58+85	-	18"	44 ft	3.0 c.y.	33 #
65+69	-	18"	36 ft	3.0 c.y.	33 #
68+30	-	24"	40 ft	4.6 c.y.	33 #

CULVERT REPAIRS REQUIRED  
 58+85 2'x3.5' 12 ft. Conc. A. Steel 345 #



B.M No 11 TOP 6" CONC. HEADER 35x28x2 Π SIDE ROAD ELEV 94.46  
 B.M No 12 SPIKE 10' ELM N SIDE ROAD 20' OFF OPPOSITE TEL POLE ELEV 101.51  
 B.M No 13 SPIKE IN BUTT OF 6' ELM BY 9' ELM N SIDE ROAD ELEV 102.10

RICHFORD  
 SHEET 5