

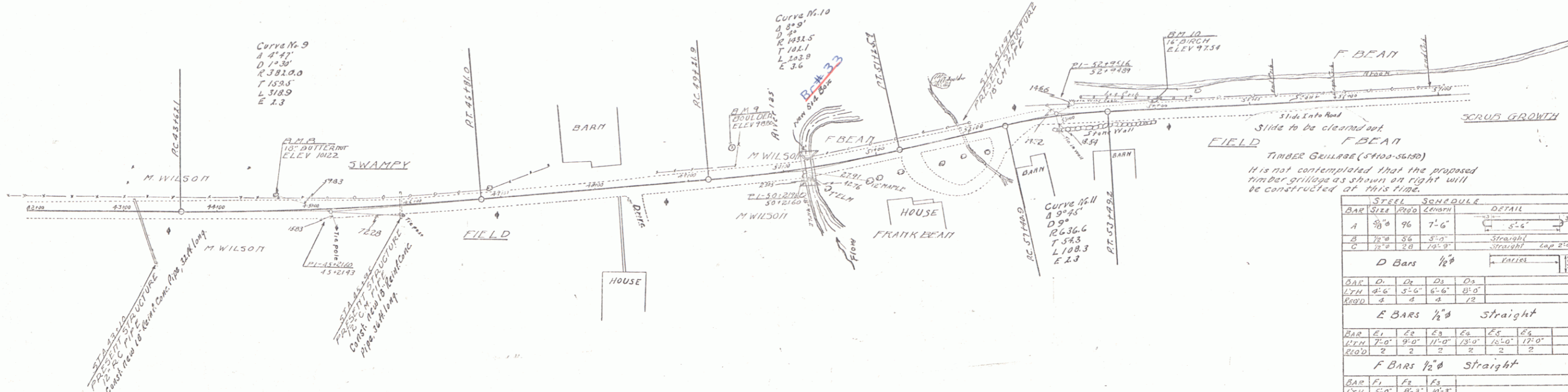
CABLE GUARD RAIL REQUIRED
 Stations Left
 43100-45124 114 ft
 53100-57100 400 ft

WOOD GUARD RAIL REQUIRED
 Culvert Sta. 224 ft
 43110 24 ft
 43125 24 ft

NEW PINK CONC. PIPE CULVERTS REQUIRED
 Station Diam. Leng. Conc. S. Steel
 43110 18" 32 3.0x4x6 32"
 43125 18" 36 3.0x4x6 32"

TIMBER GRILLAGE REQUIRED
 Stations Right Left
 54100-55150 150 ft

GRADED COBBLE GUTTER REQUIRED
 Stations Side Area Width
 54100-55150 Rt. 83 sq ft 4.0 ft

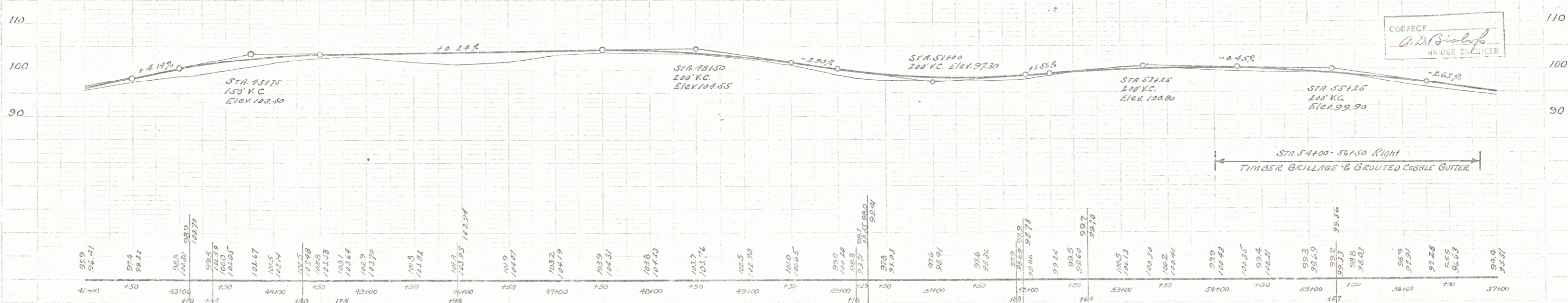


Slide into road
 Slide to be cleared out
 F BEAN
 TIMBER GRILLAGE (54100-55150)
 It is not contemplated that the proposed timber grillage as shown on right will be constructed at this time.

STEEL SCHEDULE		DETAIL	
BAR SIZE	Length	Length	Detail
A 3/8"	76	7'-6"	5'-6" 3/8"
B 1/2"	56	5'-0"	Straight
C 1/2"	28	12'-0"	Straight end 2'-0"
D Bars 1/2"			
BAR D ₁	D ₂	D ₃	D ₄
LYN 4'-6"	3'-6"	6'-6"	8'-0"
REQD 4	4	4	2
E BARS 1/2" Straight			
BAR E ₁	E ₂	E ₃	E ₄
LYN 7'-0"	9'-0"	11'-0"	15'-0"
REQD 2	2	2	2
F BARS 1/2" Straight			
BAR F ₁	F ₂	F ₃	F ₄
LYN 5'-0"	8'-3"	10'-3"	
REQD 4	4	0	
G BARS 1/2" Varies			
BAR G ₁	G ₂	G ₃	G ₄
LYN 3'-0"	4'-6"	3'-0"	3'-0"
REQD 2	2	2	2
BAR G ₅	G ₆	G ₇	G ₈
LYN 3'-0"	3'-6"	6'-0"	7'-6"
REQD 2	2	2	2

SHEETS TO BE USED FOR CULVERT
 SHEET NO 1 PLAN & PROFILE
 " 2 SC NO 1 - 5x8 CONCRETE Box CULVERT (MADE BY STANDARD FOR 2' HEIGHT)
 " 3 CROSS SECTIONS

ESTIMATED QUANTITIES FOR CULVERT
 CONCRETE CLASS "A" 22 CU YD.
 REINFC. STEEL 1660 LBS.
 STRUCT. BRK. 20 CU YD.
 CABLE RAIL (40' 4 ANCHORS) = 120 LBS.



B.M. No 8 SPIKE IN ROOT OF 18" BUTTERNUT N SIDE ROAD ELEV 10122
 B.M. No 9 TOP S. ROCK IN FIELD N SIDE ROAD 30' OFF ELEV 9880
 B.M. No 10 SPIKE IN 18" YELLOW BIRCH N SIDE ROAD ELEV 97.54

CORRECT
 G. D. Bishop
 BRIDGE ENGINEER

#51
 RICHFORD
 SHEET 4