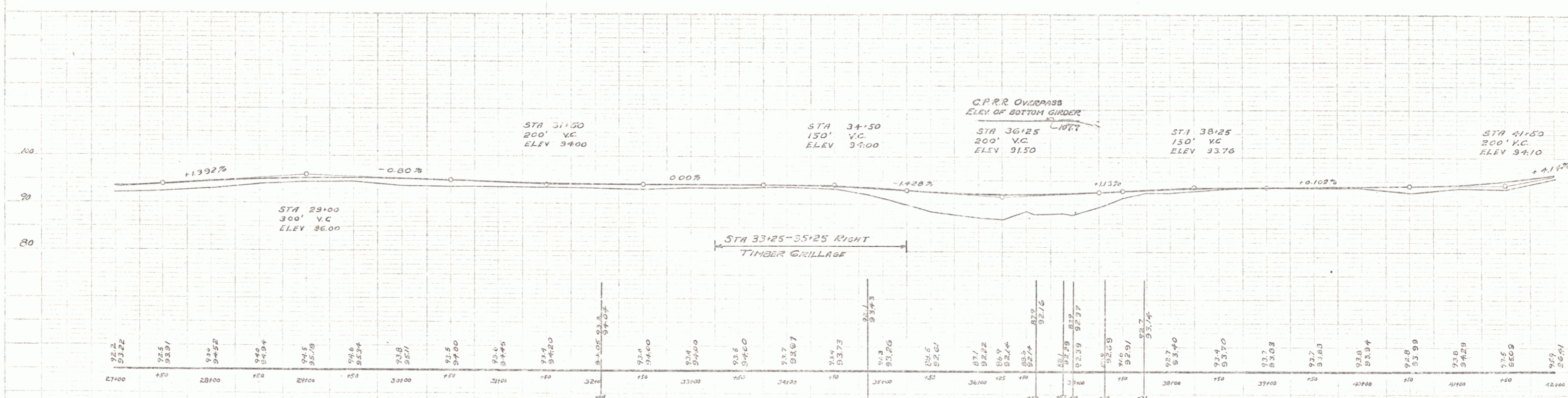
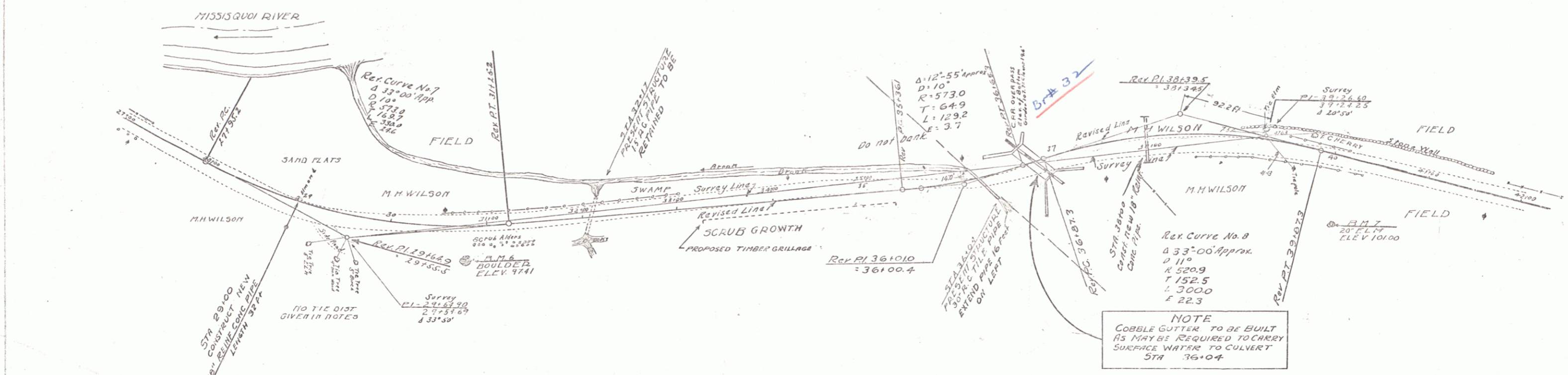


CABLE GUARD RAIL REQUIRED
 STA 27+00 - 27+52 ON LEFT 52 H. Long
 STA 37+22 - 40+50 ON LEFT 328 H. Long

WOOD GUARD RAIL REQUIRED
 CULVERT STA 29+00 24" DIA 24' R. RIGHT
 CULVERT STA 32+17 24" DIA 24' R. RIGHT
 CULVERT STA 36+04 24" DIA 24' R. RIGHT
 38 H. LONG 24 H. HIGH

NEW CULVERTS REQUIRED
 STA 29+00 18" REINFC CONC PIPE Length 32 H
 CONC CLASS B 30 cy.
 STEEL 33.0 lbs
 STA 32+17 18" R.C. PIPE, 48 H. Long
 CONC CLASS B, 3.0 cy
 STEEL 33.4

CULVERT REPAIRS REQUIRED
 STA 36+04 30" REINFC CONC PIPE Length 16 H
 CONC CLASS A 1.8 cy.
 STEEL 29 lbs



B.M. No 6 TOP OF 4 STONE S SIDE ROAD 30' OPPOSITE T.C.L. POLE ELEV 97.41
 B.M. No 7 SPIKE IN BASE 20' ELN S SIDE ROAD 80' OFF ELEV 101.00

RICHFORD SHEET 3