

GUIDE POSTS OF WOOD

STATION	LEFT	RIGHT
431+34	1	1

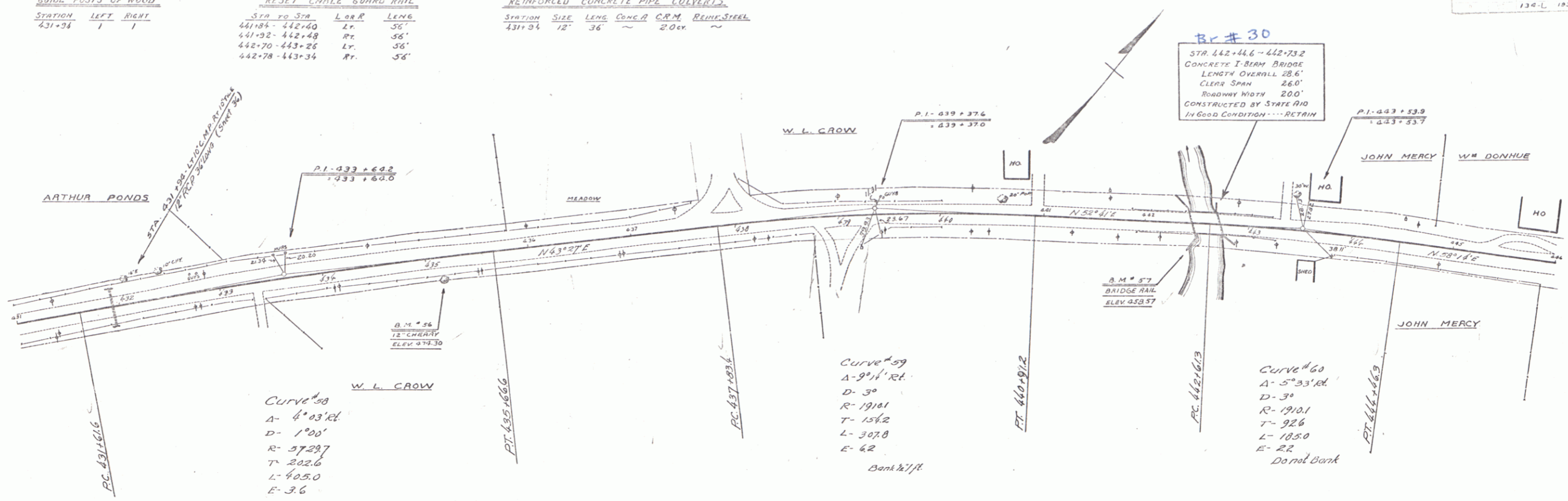
RESET CABLE GUARD RAIL

STA TO STA	LOSS	LENG
441+84 - 442+60	Lr.	36'
441+82 - 442+48	Rr.	36'
442+70 - 443+26	Lr.	36'
442+78 - 443+34	Rr.	36'

REINFORCED CONCRETE PIPE CULVERTS

STATION	SIZE	LENG	CONC	C.R.M.	REINF. STEEL
431+34	12" x 36"	~	20cy	~	~

134-L 1932 33



B.M. #56 SPIKE IN TRUNK 12" CHERRY 11' FT. RT. STA. 431+14 ELEV. 474.30
 B.M. #57 CONCRETE BRIDGE RAIL 11' FT. RT. STA. 442+48 ELEV. 453.57

SERIES F No. 124-L
 SHEET 33 OF 90

31