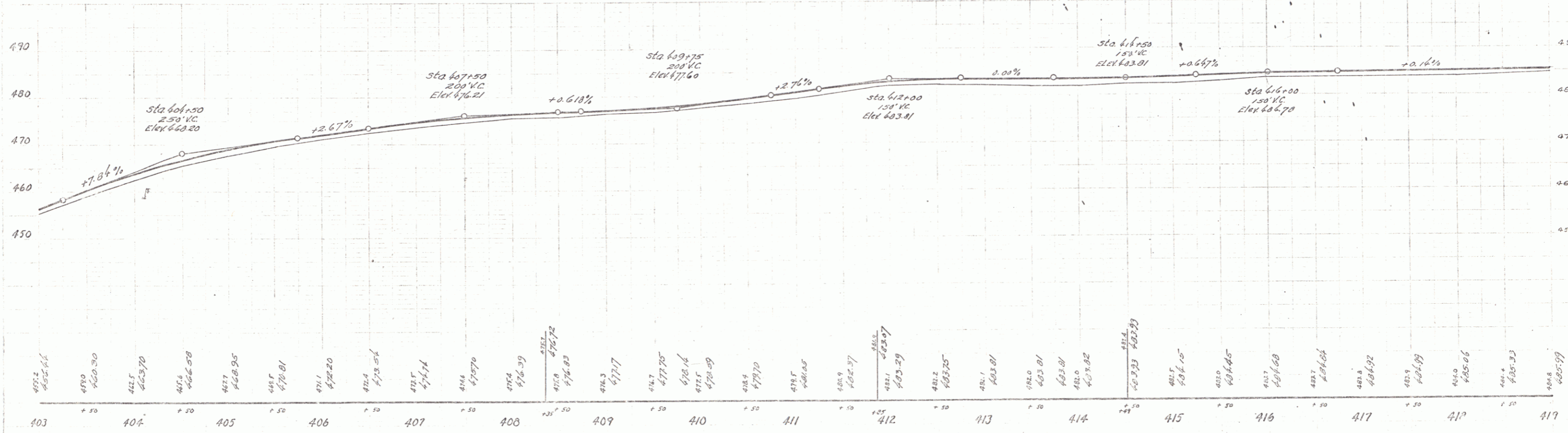
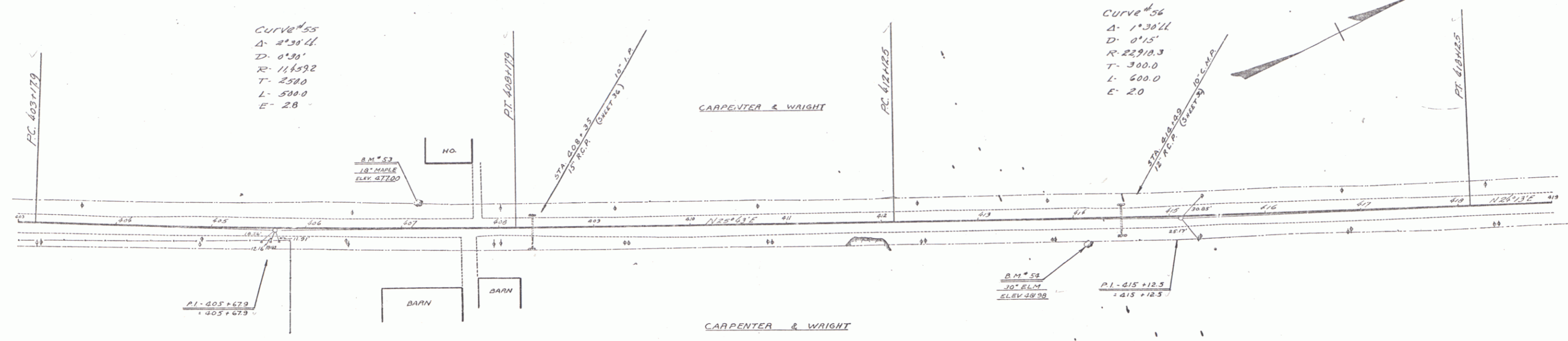


| GUIDE POSTS OF WOOD | | |
|---------------------|------|-------|
| STATION | LEFT | RIGHT |
| 408+35 | 1 | 1 |
| 414+43 | 1 | 1 |

| REINFORCED CONCRETE PIPE CULVERTS | | | | |
|-----------------------------------|------|------|-------|-----------------|
| STATION | SIZE | LENG | CONCR | CRWL REIN STEEL |
| 408+35 | 15" | 32' | ~ | 27 cr ~ |
| 414+43 | 12" | 32' | ~ | 20 cr ~ |

134-L, 1932 31



B.M. # 53 SPIKE IN ROOT 18" MAPLE 23 FT. LT. STA. 407+11 ELEV. 477.00
 B.M. # 54 SPIKE IN ROOT 30" ELM 24 FT. RT. STA. 412+14 ELEV. 481.39

SERIES F No. 134-L
 SHEET 31 OF 32