

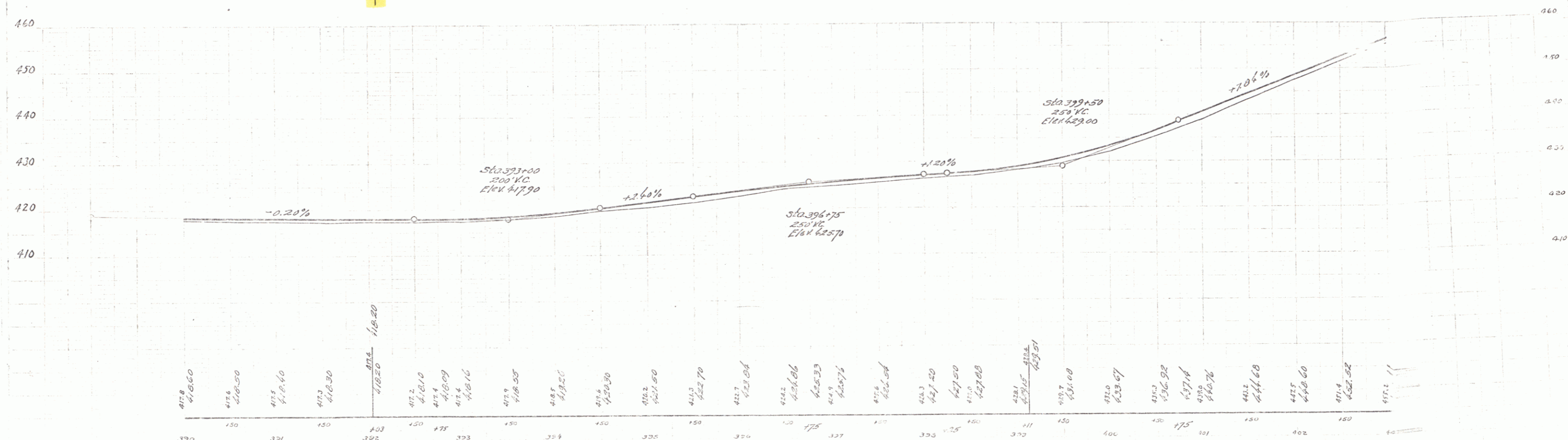
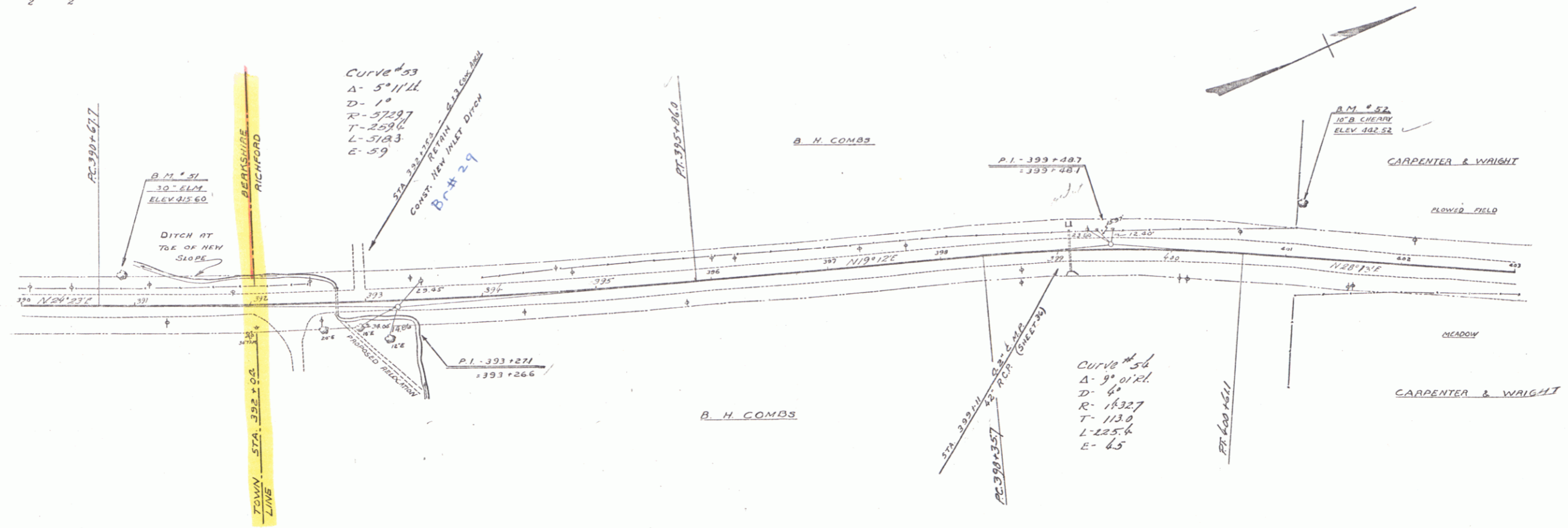
GUIDE POSTS OF WOOD

STATION	LEFT	RIGHT
392+75	2	2
393+11	2	2

REINFORCED CONCRETE PIPE CULVERTS

STATION	SIZE	LENG	CONCR	CRM	REINF STEEL
399+11	42"	40'	3.0 CY	~	30"

134-L 1932 30



B.M. #21 SPIKE IN ROOT 30' ELM 23 FT. LT. STA. 392+08 ELEV. 418.60
 B.M. #22 SPIKE IN TRUNK 16" BLACK CHERRY 45 FT. LT. STA. 392+00 ELEV. 418.53

ERIC'S F No 134 L
 30 OF 90

see # 29 of 132
 F-FG 034-1(1)