

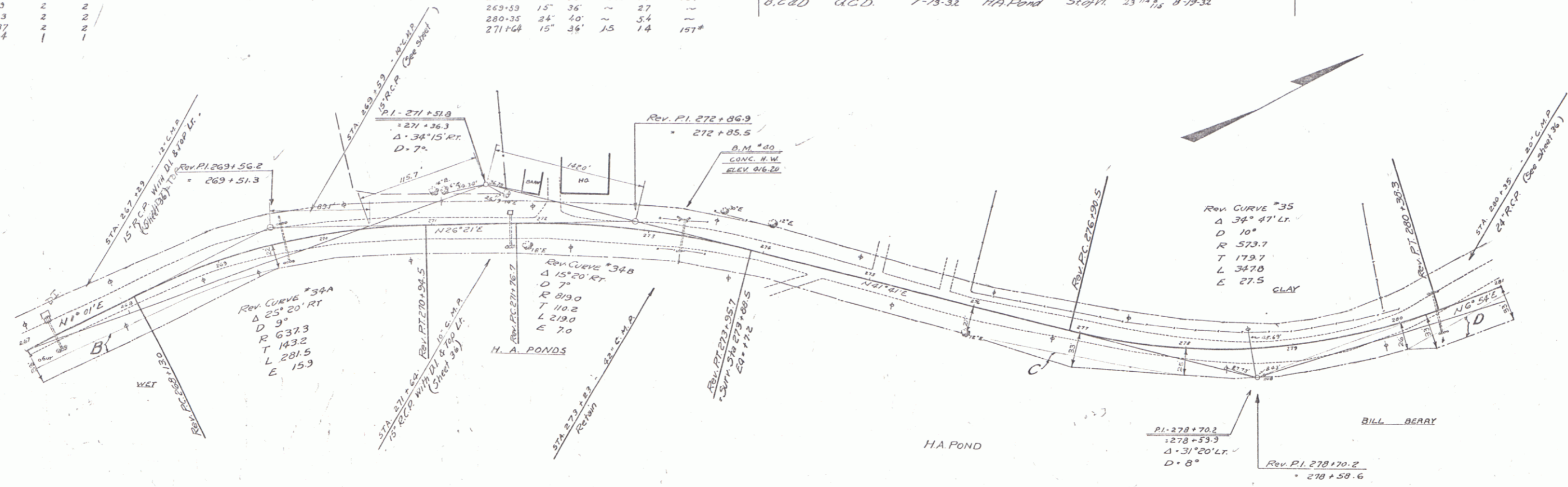
GUIDE POSTS OF WOOD		
STATION	LEFT	RIGHT
267+29	2	2
269+53	2	2
273+23	2	2
280+37	2	2
271+64	1	1

CABLE GUARD RAIL			
STA. TO STA.	LAB.	LENG.	CONSTANT PIV. LENG.
276+50-278+18	RT	168	40
269+50			208

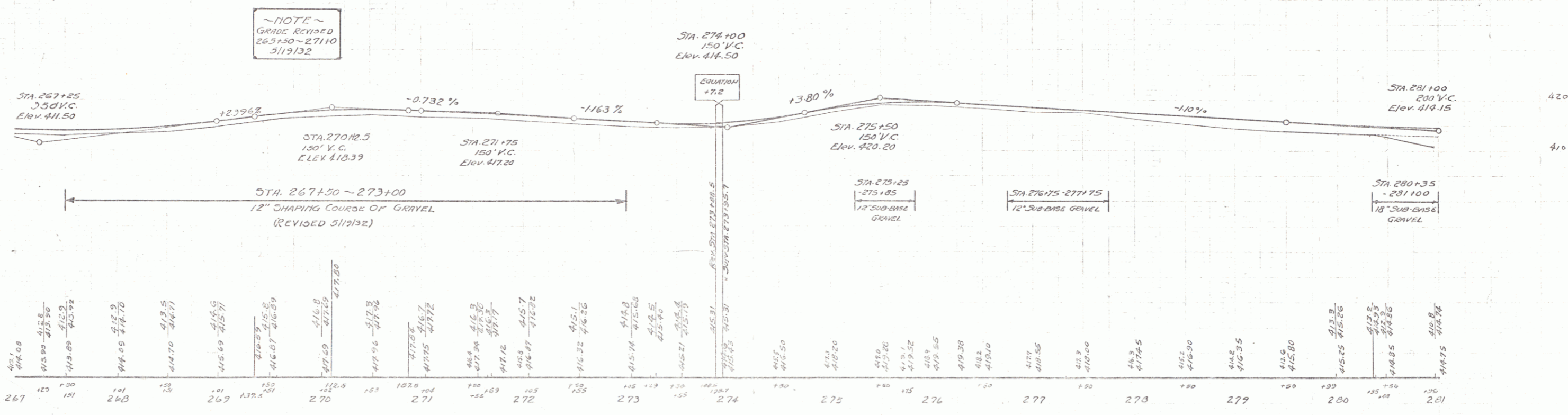
REINFORCED CONCRETE PIPE CULVERTS					
STATION	SIZE	LENG.	CURVE	CON.	REIN. SHELL
267+23	15" x 36"	1.50c	14	157#	
269+53	15" x 36"	~	27	~	
280+35	24" x 40"	~	34	~	
271+64	15" x 36"	1.5	14	157#	

Parcel	Kind of Instrument	Date of Instrument	Grantor	Grantee	Recorded Book	Remarks
B.C. & D.	G.C.D.	7-13-32	H.A. Pond	Steff.	23	11/15 8-19-32

134-L 1932 22 90



REVISIONS
 11/15/32
 11/15/32
 11/15/32



B.M. #00 PAINT SPOT ON CONC. HEADWALL 15.5 FT. LT. STA. 273+20 ELEV. 416.20

SERIES F No. 134-L
 SHEET 22 OF 20
 See Berkshire
 F-FG 034-1(1)
 20