

GUIDE POSTS OF WOOD

STATION	LEFT	RIGHT
262+68	1	~
264+10	1	~

CABLE GUARD RAIL

STA TO STA	BACK	LINE	CONSTANT	PAYLOADS
253+75	261+35	Rt	160	40 200
263+50	265+02	Rt	152	40 192

REINFORCED CONCRETE PIPE CULVERTS

STATION	SIZE	LENG	CURV	CRAI	REIN STRE	DI. GRADES
262+71	15"	36'	1.5 cr	14 cr	157"	~
264+10	15"	40'	1.5 cr	14 cr	157"	~
255+22	15"	40'	1.3 cr	10 cr	99"	1
256+75	15"	40'	2.0 cr	1.0 cr	99"	1
260+42	15"	35'	~	1.0 cr	~	~

PERFORATED CORRUG GALV METAL PIPE COATED

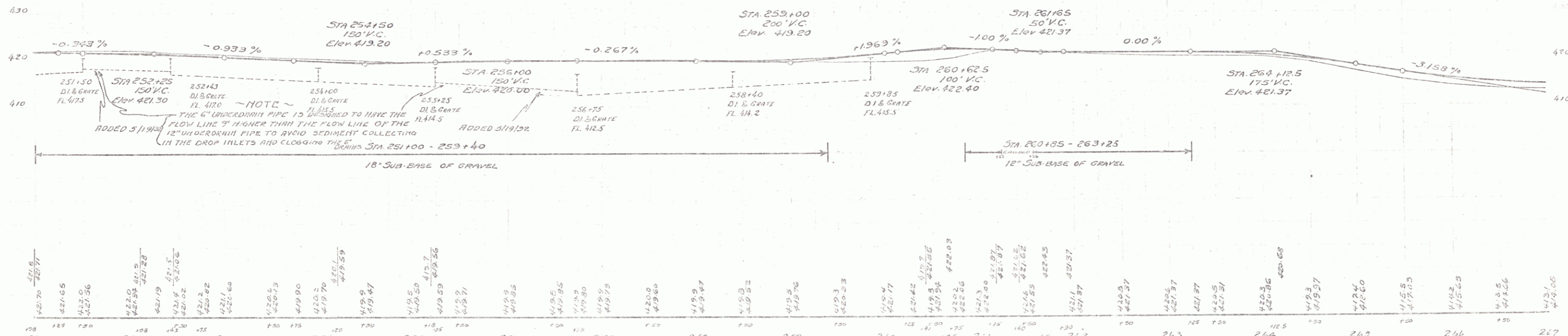
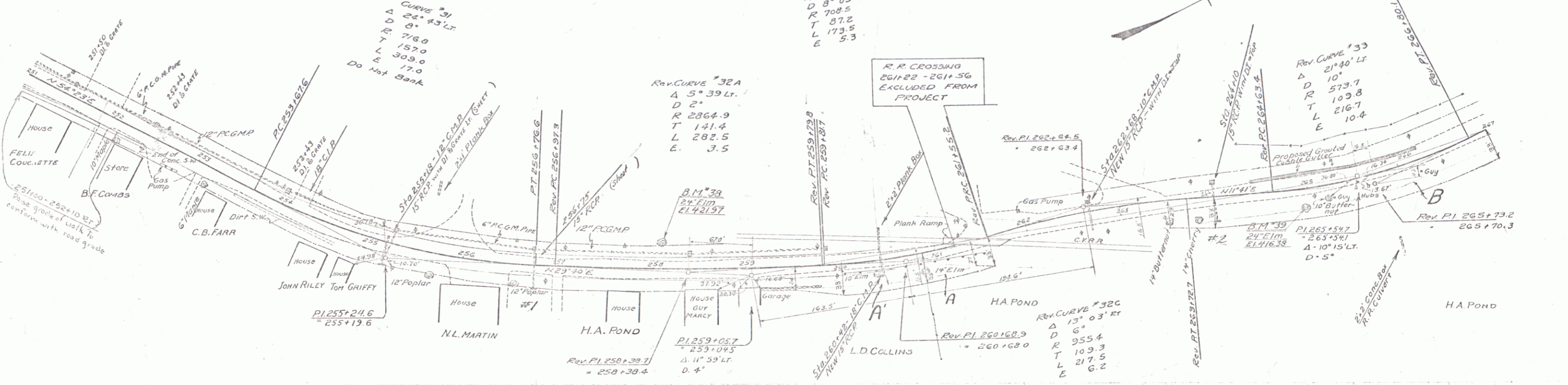
STA TO STA	LENG	SIZE	LENG	CONJ. D	CRAI	REIN STRE	DI. GRADES
251+00	251+48	Lt	12'	45'	1.5 cr	99"	1
252+43	255+85	Lt	12'	272'	3.2 cr	~	2
256+15	259+85	Lt	12'	300'	3.9 cr	~	2
251+50	252+43	Lt	6'	93'	~	~	~
252+10	255+74	Lt	6'	137'	~	~	~

GROUTED CORRUG GUTTER

STA TO STA	LENG	LINE	WIDTH	AREA
264+10	265+25	Lt	165' 3"	62 sq.

134-L 1932 21 90

Found	Kind of Instrument	Date of Adjustment	Operator	Quantity	Remarks
A	O.C.D.	7-13-32	L.D. Collins	Staf. #1	33 1/2 0-1932
A	O.C.D.	7-13-32	H.A. FARR	Staf. #2	33 1/2 0-1932



B.M. # 30 SPIKE IN ROOT 24' ELM 24' FT AT STA 259+00 ELEV 421.97
 B.M. # 39 SPIKE IN ROOT 24' ELM 16' FT AT STA 264+33 ELEV 416.38

SERIES F 170-134-L
 SHEET 21 OF 90
 See Berkshire
 F-FL 034-1(1)
 19