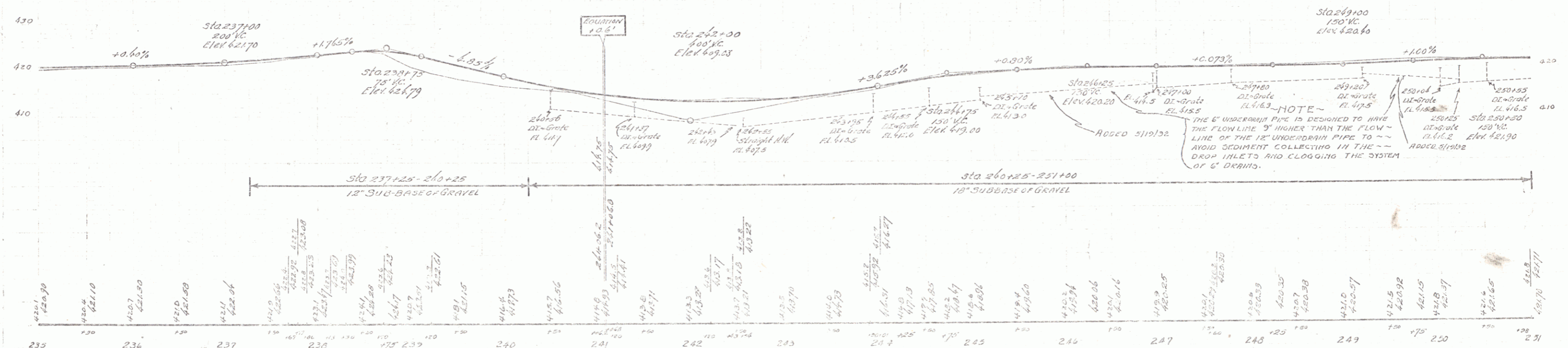
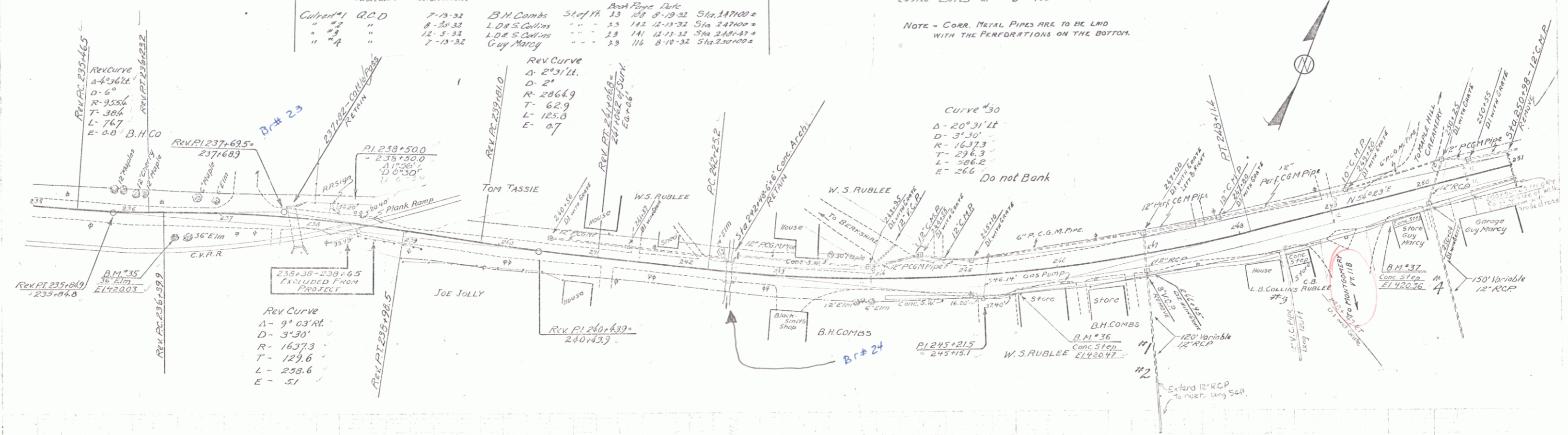


CABLE GUARD RAIL				REINFORCED CONCRETE PIPE CULVERTS				PERFORATED CORRUGATED GALV METAL PIPE COATED										
Sta to Sta	LEN	LEVEL	CONSTANT PAV. LEVE	STATION	SIZE	LEN	CONCR	C.R.M	REIN. STEEL	DI. GRATES	Sta to Sta	LEN	CONCR	C.R.M	REIN. STEEL	DI. GRATES		
236+50-237+10	60'	15.0'	4.0'	246+25	12"	160'	2.0cy	10cy	39#	1	240+54-243+42	88'	12"	184'	3.4cy	19#	2	
				246+25	12"	138'	3.6cy	10cy	99#	2	243+42-245+10	18'	12"	248'	5.7cy	10cy	29#	3
				250+13	12"	138'	3.6cy	10cy	99#	2	245+10-247+00	10'	12"	216'	4.5cy	10cy	29#	3
											247+00-251+00	40'	12"	295'	1.9cy	10cy	99#	1
											251+00-251+00	0'	12"	75'	1.9cy	10cy	99#	1
											251+00-250+23	77'	6"	165'				

Parcel	Kind of Instrument	Date of Instrument	Grantor	Grantee	Recorded	Remarks
Culvert #1	A.C.D.	7-13-32	B.H. Combs	Stef. H.	13	188 07-19-32 Sta. 247+00 ±
" #2	"	8-28-32	L.D. S. Collins	"	13	182 12-15-32 Sta. 247+00 ±
" #3	"	12-5-32	L.D. S. Collins	"	13	181 12-15-32 Sta. 247+00 ±
" #4	"	7-13-32	Guy Marcy	"	13	116 8-10-32 Sta. 237+00 ±

NOTE - CORR. METAL PIPES ARE TO BE LINED WITH THE PERFORATIONS ON THE BOTTOM.



B.M. #35 SPIKE IN ROOT 36" ELM 250 FT AT STA 236+53 ELEV 420.03  
 B.M. #36 PAINT SPOT ON CONC STEP AT STORE 825 FT AT STA 243+54 ELEV 420.07  
 B.M. #37 PAINT SPOT ON CONC STEP AT STORE 28 FT AT STA 249+63 ELEV 420.36

SERIES F No 134-  
 SHEET 20 OF 70  
 See F-FG 034-1(1)