

**GUIDE POSTS OF WOOD**

STATION	LEFT	RIGHT
223+10	1	1
223+38	1	1
230+85	1	1

**REINFORCED CONCRETE PIPE CULVERTS**

STATION	SIZE	LEN	CONC. A	C&M	REIN. STEEL	DIGRATES
223+16	18"	38'	1.5 CY	10"	99"	1
230+55	18"	20'	1.0	10"	99"	1

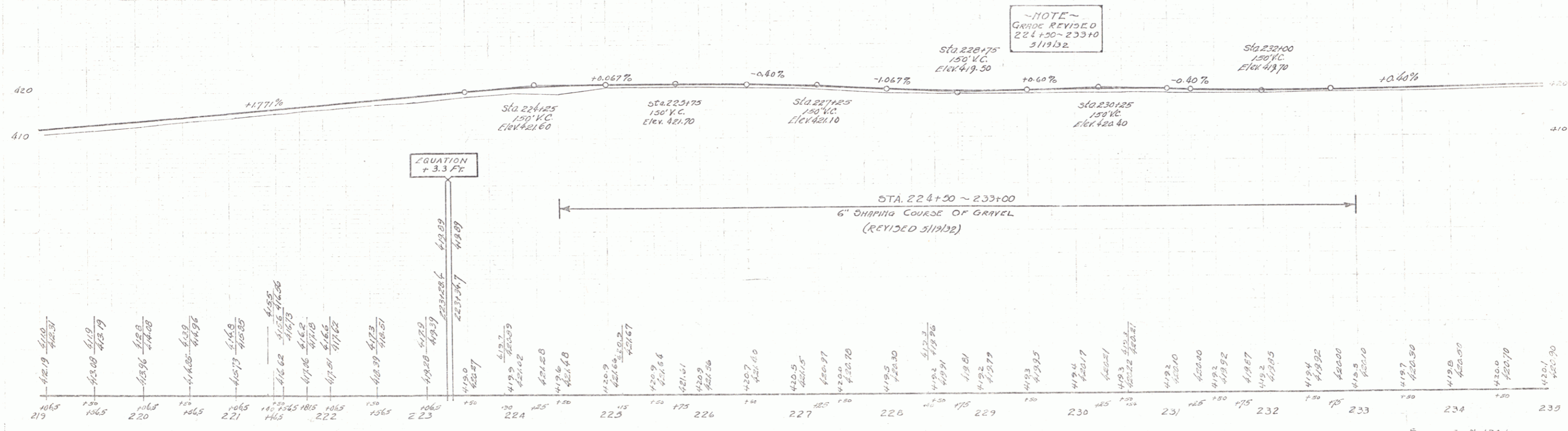
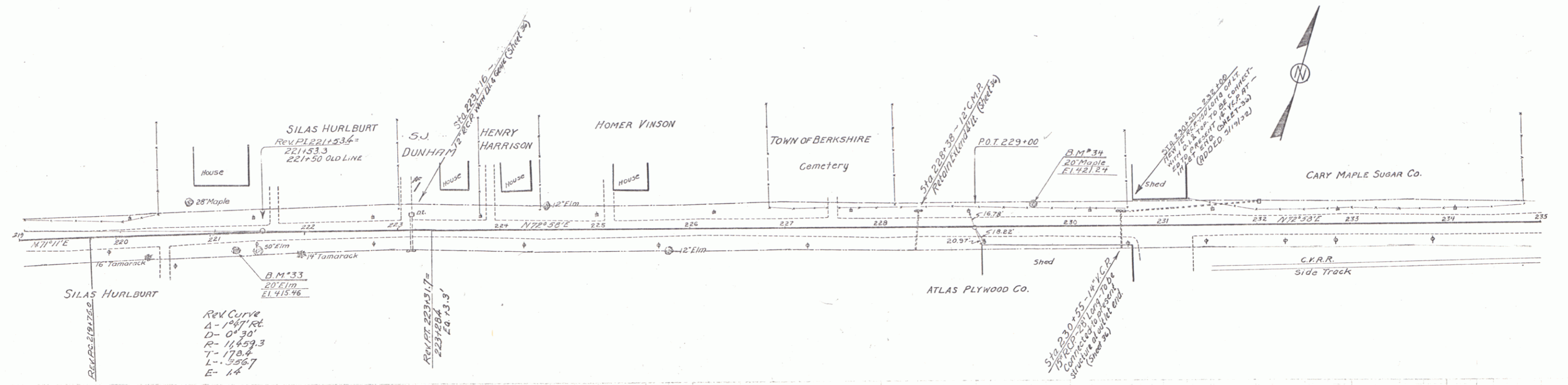
LT. 230+50-232+10 12" 150' 15 CY. - 99" D.I. WITH TOP

**CULVERT REPAIRS**

STATION	TYPE	REPAIRS	C&M	REIN. STEEL
220+38	12" RCP	EXTEND 64'	10	

134-L 1932 17

Parcel	Kind of Instrument	Date of	Grantor	Grantee	Recorded	Remarks
Cohet #1	G.C.D.	7-15-32	S.J. Dunham	St. of Vt.	22 119	0-19-32 56 23346



BM # 33 SPIRE IN 20' 6LM 15 FT. RT. STA 221+20 ELEV. 415.66  
 BM # 34 SPIRE IN ROOT 20' MAPLE 20' FT. LT. STA 223+64 ELEV. 421.24

SERIES C No. 134-L  
 SHEET 17 OF 90