

GUIDE POSTS OF WOOD

STATION	LEFT	RIGHT
200+50	1	1

CABLE GUARD RAIL

STA. TO STA.	LINK	LENS	CONSTANT	BY	LENS
193+61 - 196+27	RT	336	40	376	
196+00 - 200+00	RT	200	40	240	

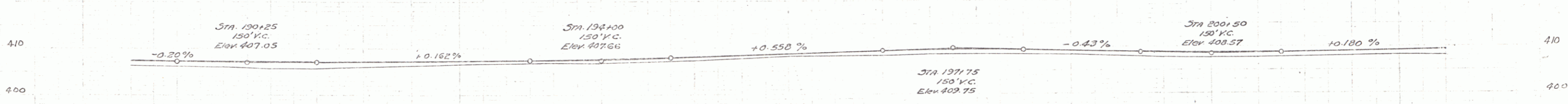
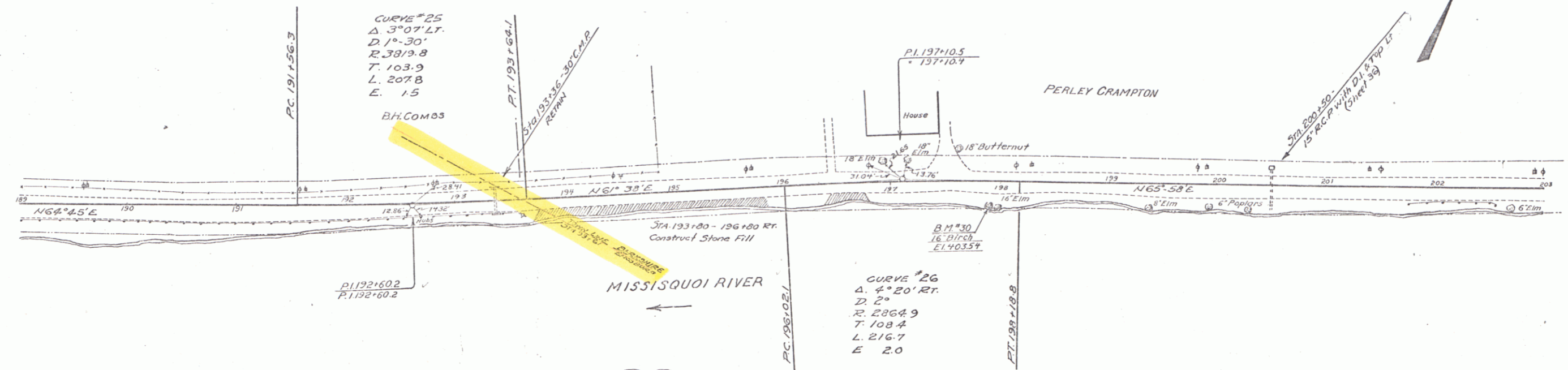
RESET CABLE RAIL

STA. TO STA.	LINK	LENS
183+00 - 193+61	RT	4-61
201+75 - 202+55	RT	80

REINFORCED CONCRETE PIPE CULVERTS

STATION	SIZE	LENS	CONC. CRIM	REIN. STEEL
200+50	15" x 40"	1.5 CY		1.57"

134-L 1932 17 90



Station	Elevation
189	407.29
189.5	407.3
190	407.20
190.5	407.13
191	407.12
191.5	407.12
192	407.17
192.5	407.21
193	407.25
193.5	407.3
194	407.39
194.5	407.3
195	407.3
195.5	407.3
196	407.3
196.5	407.3
197	407.33
197.5	407.33
198	407.33
198.5	407.33
199	407.33
199.5	407.33
200	407.33
200.5	407.33
201	407.33
201.5	407.33
202	407.33
202.5	407.33
203	407.33

B.M. #30 SPIKE IN ROOT 16" BIRCH 21 FT. RT. STA. 197+30 ELEV. 403.58

SERIES F No. 134-1
SHEET 17 OF 90

15