

GUIDE POSTS OF WOOD
 STATION LEFT RIGHT
 183+00 1 1
 188+75 1 1

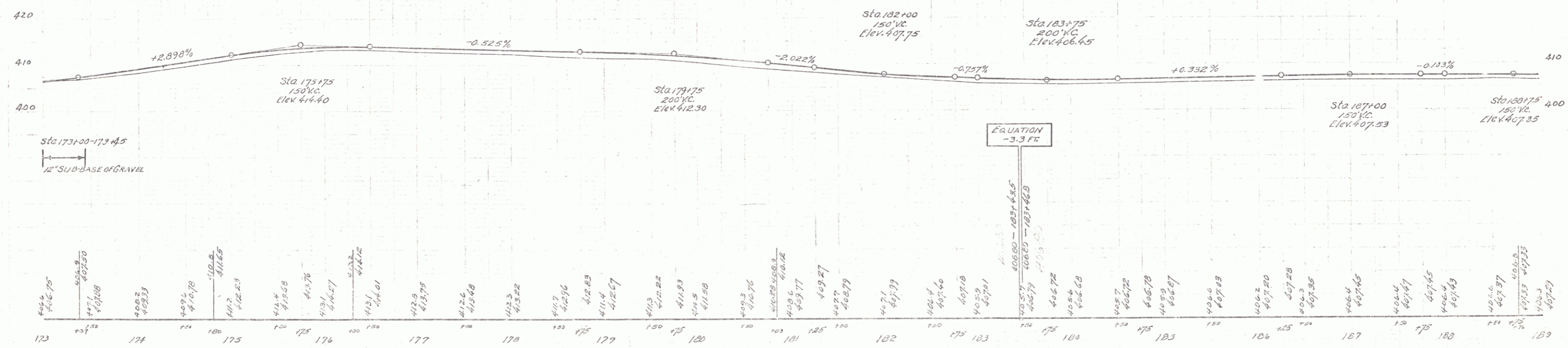
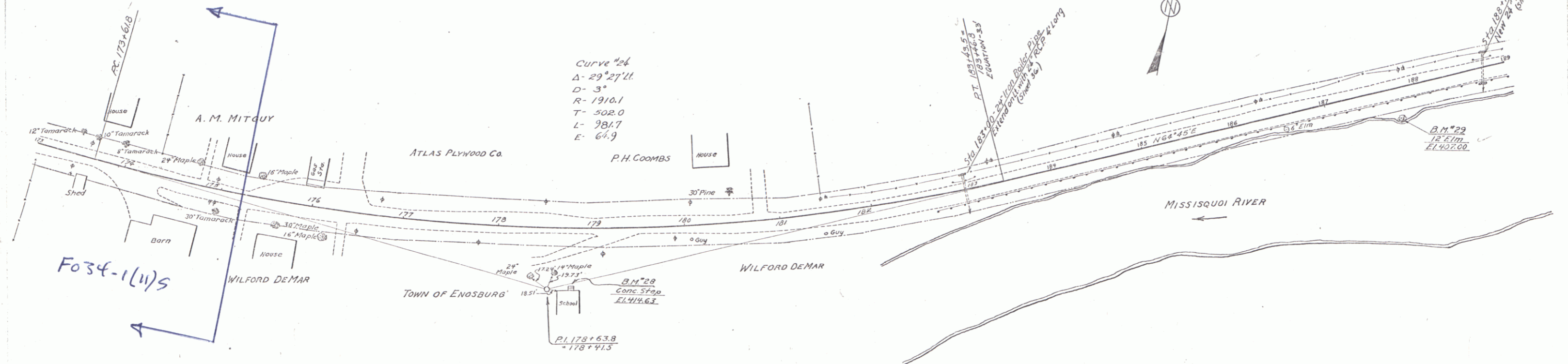
REINFORCED CONCRETE PIPE CULVERTS
 STATION SIZE LEAD CONC. C.M. BEING STEEL
 188+75 24' 32' 54'

CULVERT REPAIRS
 STATION TYPE DEPAIRS CONC. CURB
 183+00 24' RCP EXTEND 4' 2.7' Curb

134-L 1932 16

RESET CABLE GUARD RAIL
 STA TO STA LEAD LENS
 182+57-189+00 11' 41.5'

Curve #24
 $\Delta = 29^{\circ}27'11''$
 $D = 3^{\circ}$
 $R = 1910.1$
 $T = 502.0$
 $L = 981.7$
 $E = 64.9$



B.M. #28 PAINT SPOT ON CONC. STEPS AT SCHOOL HOUSE 65 FT. RT. STA. 178+71 ELEV. 918.63
 B.M. #29 SPIKE IN ROOT 12' ELM 30 FT. RT. STA. 187+75 ELEV. 407.00

SEEKS F. 16.134-L
 SHEET 16 OF 90