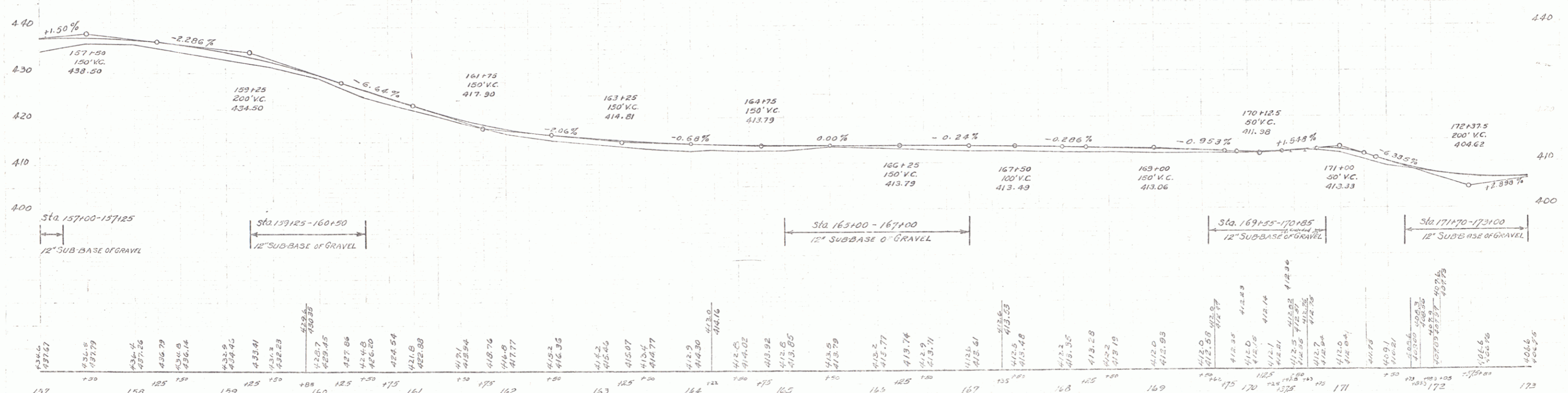
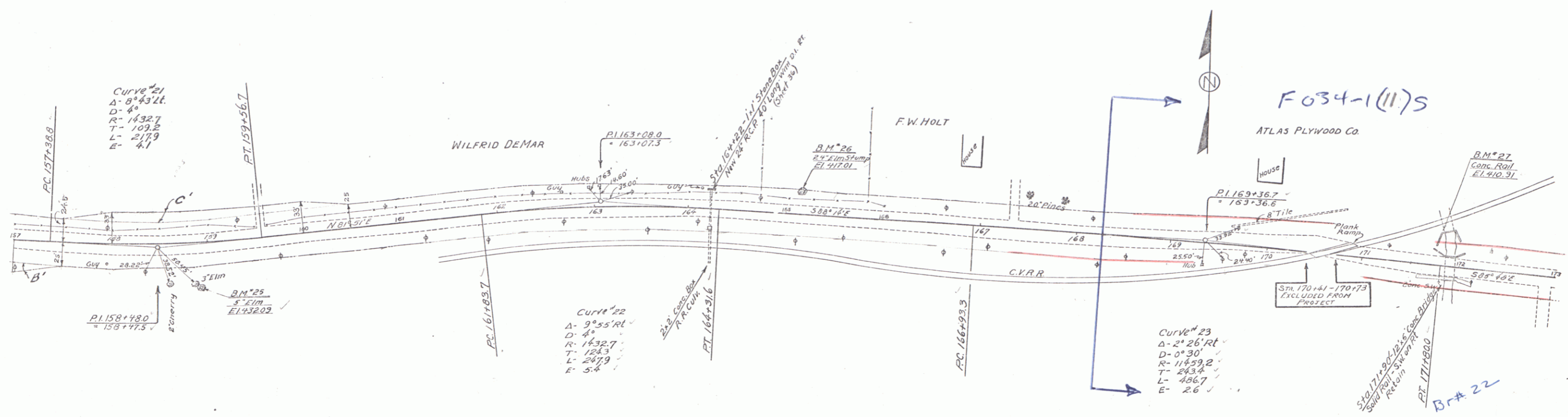


GUIDE POSTS OF WOOD  
 STATION LEFT RIGHT  
 164+22 1  
 144+22 24

REINFORCED CONCRETE PIPE CULVERTS  
 STATION SIZE LEAS CONC. C.M. REINSTEEL  
 164+22 24 40 1901 2701 111"

Partial Kind of Date of Greater Grantee Recorded Remarks  
 Instrument  
 B'-C' G.C.D. 7-13-32 W.A.E. Demer 51 of 11 23 1/2 8-19-32

154-L 1932 15



B.M. # 25 SPIKE IN TRUNK 5" ELM 9.4 FT. RT. STA. 158+91 ELEV. 432.09  
 B.M. # 26 SPIKE IN 24" ELM STUMP 21 FT. LT. STA. 165+16 ELEV. 417.01  
 B.M. # 27 PAINT SPOT ON CONC. RAIL OF R.R. BRIDGE 30 FT. LT. STA. 171.89 ELEV. 410.31

SHEET 13 OF 90