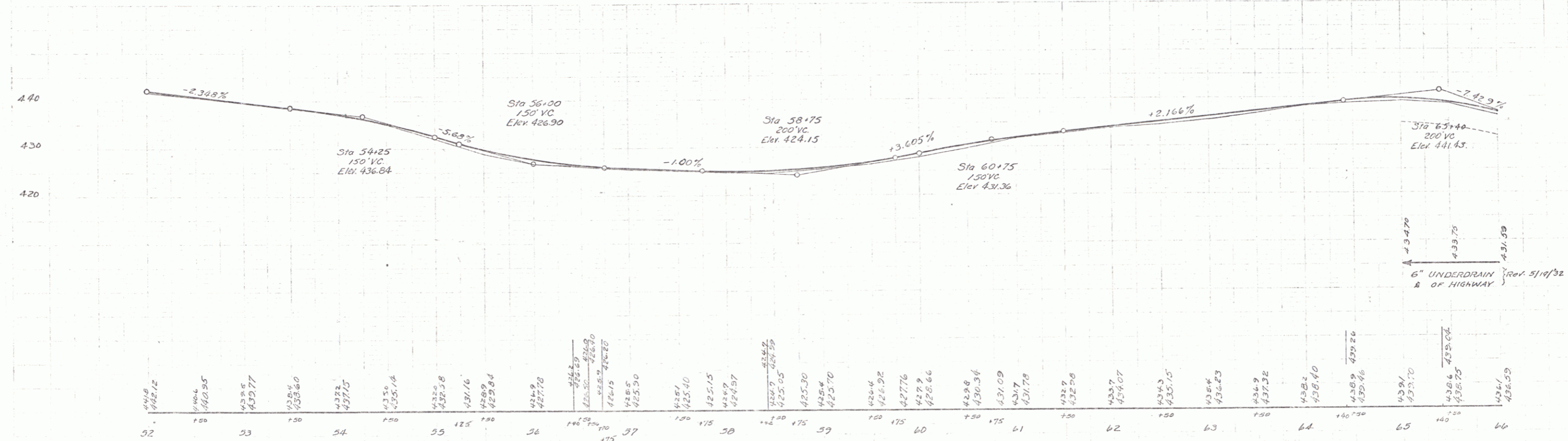
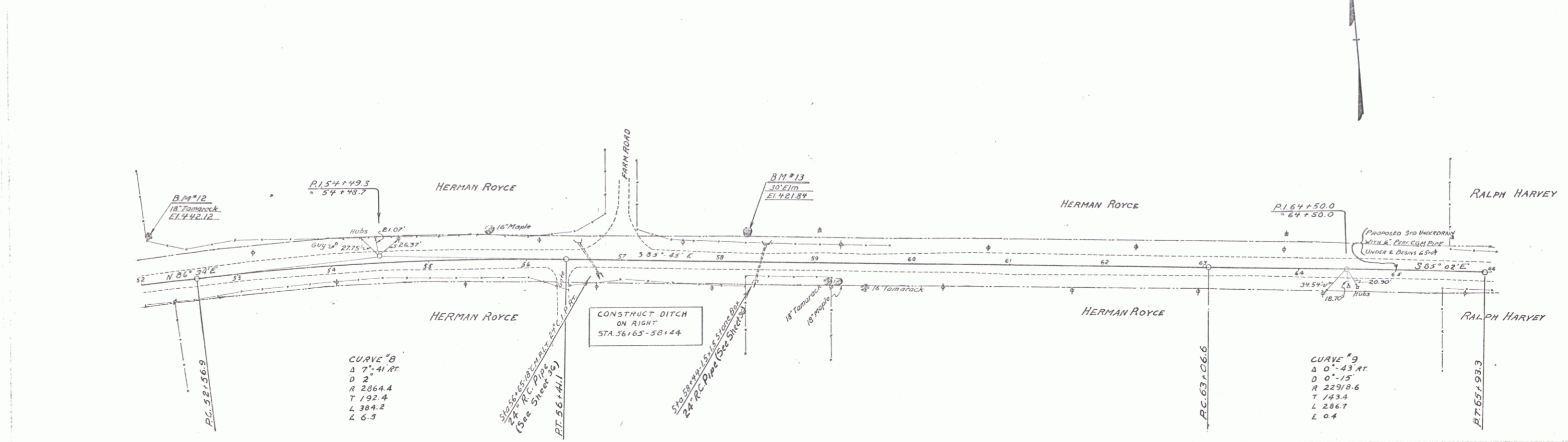


GUIDE POSTS OF WOOD REQUIRED		
CG&C STA	LT	RT
561.65	1	1
581.44	1	1

REINFORCED CONCRETE PIPE CULVERTS (REQUIRED)				
Sta	Diam	Leq	Comp	CRM
561.65	24"	44'	24"	54"
581.44	24"	44'	24"	54"

STD UNDERDRAIN WITH 6" PERK. C.G.M. PIPE (COATED)			
STA	To SEA	LENGTH	CRM
651.0	661.0	100'	

134-L 1932 B 90



B.M. 12 Spike in Root 18' Tamarack 15' Lt. Sta. 52+11, El. 442.12
 B.M. 13 30' Elm 26' Lt. Sta. 58+29, El. 421.84

SERIES F No. 134-L
 SHEET 8 OF 90

6