

GUIDE POSTS OF WOOD REQUIRED

CULV. STA.	LT.	RT.
29+73	1	1
31+62	1	1

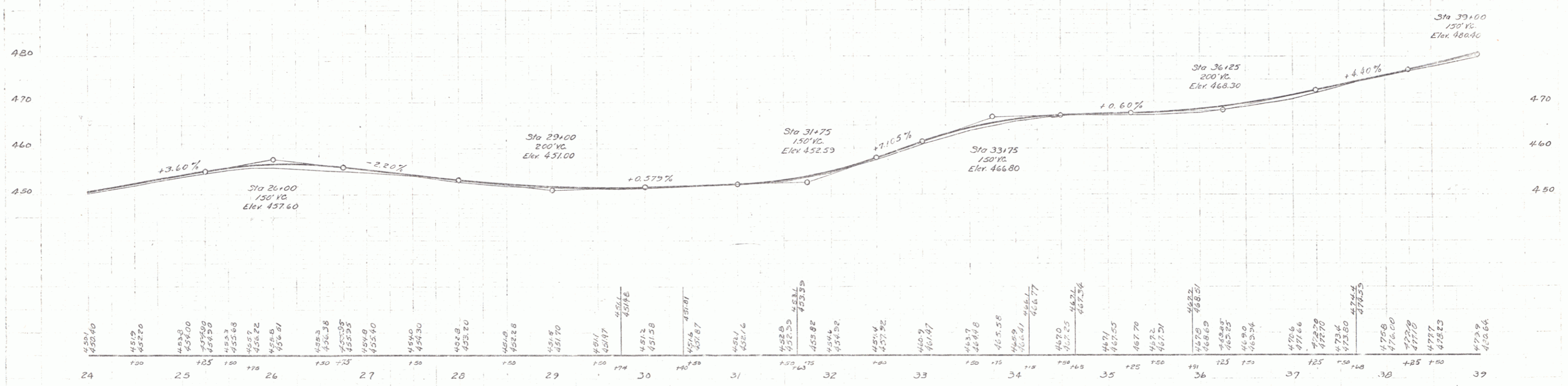
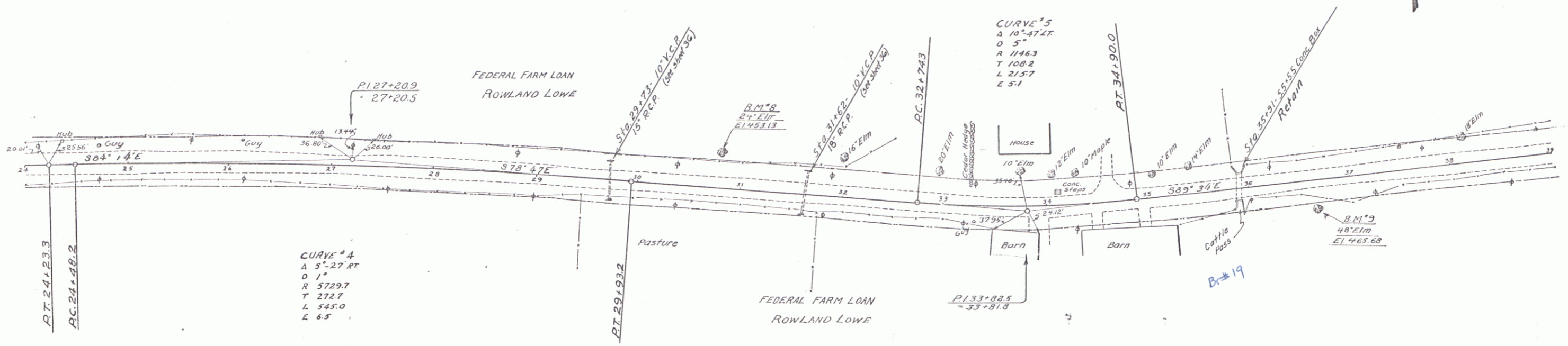
WOOD GUARD RAIL REQUIRED

CULV. STA.	LT.	RT.
35+91	24	24

REINFORCED CONCRETE PIPE CULVERTS REQUIRED

Sta.	Diam.	Len.	Comp.	CRM	Steel
29+73	18"	36'	-	27	-
31+62	18"	40'	-	35	-

134-L-1932-6-90



B.M.#8 Spike in Root 24' Elm 30' LT Sta 30+78 El 453.13  
 B.M.#9 " " " 48' " 25' RT Sta 36+55 El 465.68

SERIES F No. 134-L  
 SHEET 6 OF 70