

GUIDE POSTS OF WOOD REQUIRED

CULV. STA.	LT.	RT.
8+68	1	1

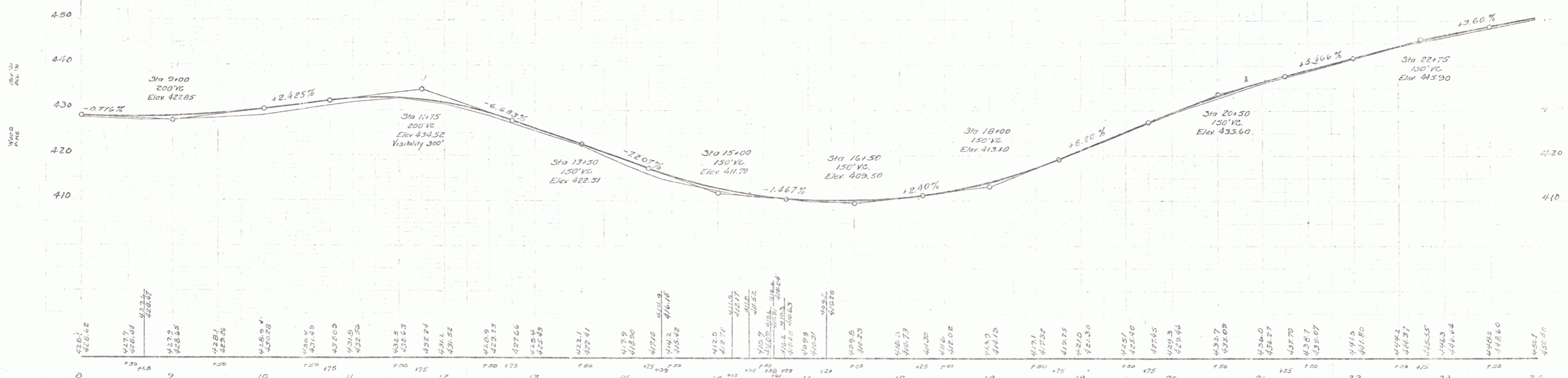
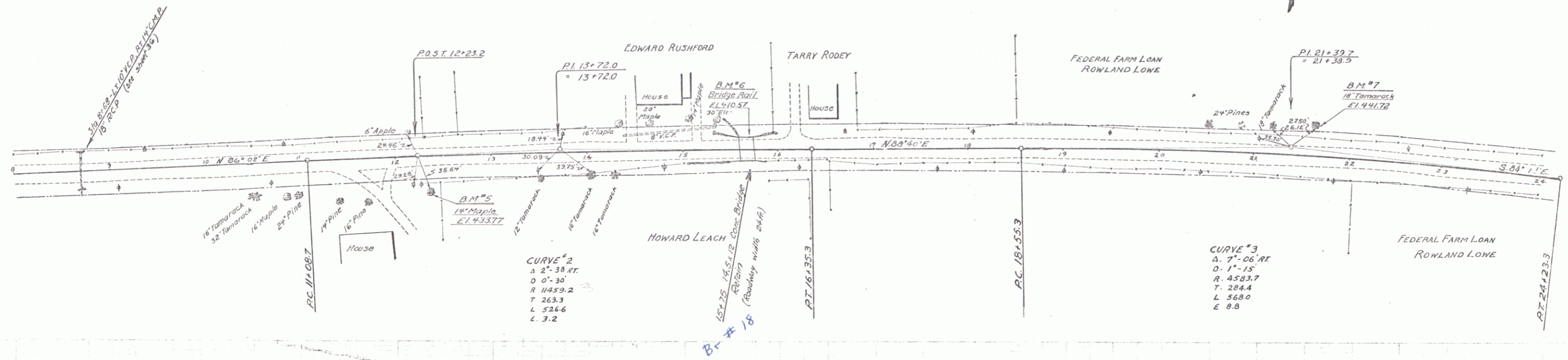
CABLE GUARD RAIL REQUIRED

STA. RANGE	LT. LENS	RT. LENS	CONSTANT PULLING
15+51-15+99	LT. 48'	40'	88'
15+51-15+99	RT. 48'	40'	88'

REINFORCED CONCRETE PIPE CULVERTS REQUIRED

Sta	Diam.	Len.	Comp. H.	C.R.M. Steel
8+68	18"	40'	-	3.5'

134-L 1932 3 90



B.M.#5 Spike in Root 14" Maple 34' Rt. Sta. 12+35 El. 433.77
 B.M.#6 Point Spot on Conc. Bridge Rail 13' Lt. Sta. 15+70 El. 410.57
 B.M.#7 Spike in Root 18" Tomarack 27' Lt. Sta. 21+61 El. 441.72

SERIES No. 134-L
 SHEET 5 OF 9