

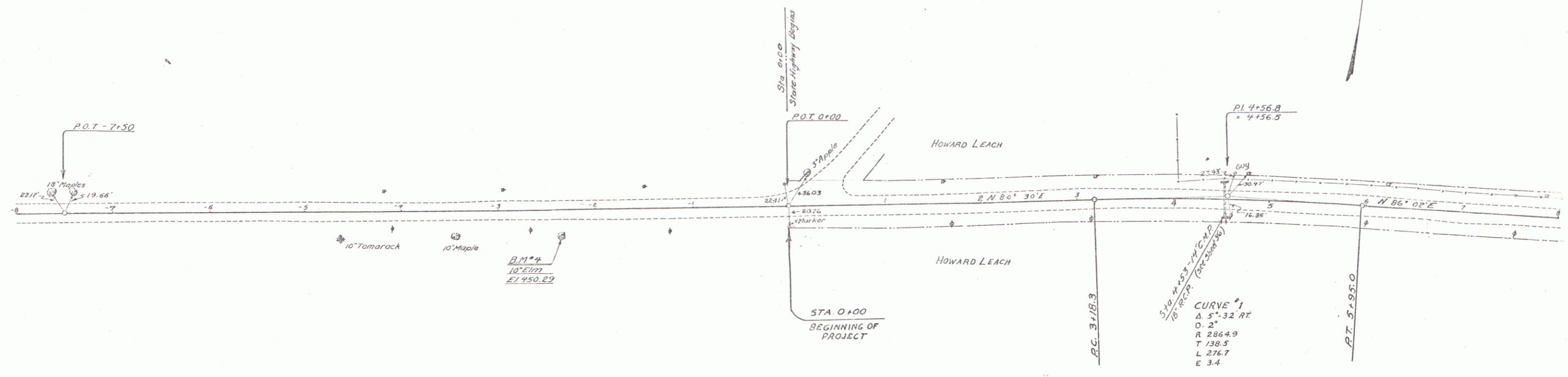
GUIDE POSTS OF WOOD REQUIRED

CULV. STA.	LT.	RT.
4+53	1	1

REINFORCED CONCRETE PIPE CULVERTS REQUIRED

Sta.	Diem.	Leag.	Cons.	RTM.	Steel.
4+53	18"	36'	-	3.3%	-

134-L 1932 4 90



U.S.G.S. B.M. Near Post Office at Enosburg Falls E1 422.68
 B.M. #1 Point Spot on Conc. R.W. Opposite Orchard St. Intersection E1 431.37
 B.M. #2 Spike in Root of Elm Opposite West Berkshire Intersection E1 451.68
 B.M. #3 Cap Nut on Hydrant at Pleasant St. Intersection E1 461.81
 B.M. #4 Spike in Trunk of Elm at Lt. 37a-2+36 E1 450.29

SERIES F No 134-L
 SHEET 4 OF 90