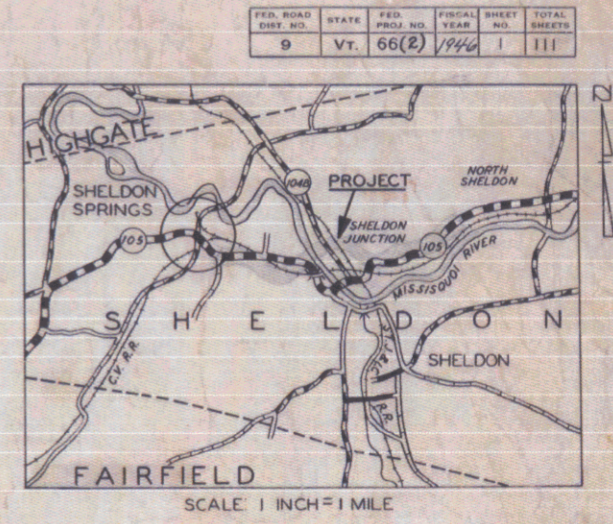


INDEX OF SHEETS

SHEET NO. 1	TITLE PAGE
2	TYPICAL CROSS-SECTION OF IMPROVEMENT (2 1/2" CRUSHED STONE MIXED IN PLACE SURFACE COURSE WITH CUTBACK ASPHALT, TYP. 3, AND PAVE. CONT. OF TYPED T&E, ITEM 3.0)
3	BANKING AND WIDENING TABLES
5-20	PLAN AND PROFILE
21-22	PASSING AND TRANSFER TRACK
23	DETAILS OF RR. TRACK SCALES
24-30	BRIDGE DETAILS
31	STANDARD STRUCTURE SHEET S-28 PIPE CULVERTS
32	" " " S-30 GUARD RAIL
33	" " " S-30-A BOUNDARY MARKERS AND CATCH BASINS
34	" " " SC-2-4 4X5 BOX CULVERT
35	" " " SCW-4x5 4X5 BOX CULVERT
36	" " " RCCP-2 4X6 BOX CULVERT
37	" " " S-40 BARRICADES SIGNS AND LIGHTS
38	" " " S-41 ROUNDING OF SLOPES
39	" " " SB-11 BARRICADES SIGNS AND LIGHTS FOR BRIDGES
40	" " " SB-20 BRIDGE DETAILS
49-104	CROSS SECTIONS
105-108	CULVERT SECTIONS
109-111	PASSING AND TRANSFER TRACK SECTIONS

STANDARD STRUCTURE SHEETS APPROVED BY THE CHIEF ENGINEER
 S-28 APRIL 26, 1941
 S-30 MAY 13, 1941
 S-30-A APRIL 19, 1941
 S-40 SEPT. 31, 1940

STATE OF VERMONT
 STATE HIGHWAY DEPARTMENT
**PLAN AND PROFILE OF PROPOSED
 STATE HIGHWAY**
 FEDERAL PROJECT
TOWN OF SHELDON
 VT ROUTE 105



NOTE
 CHANGE ORDER NO. 1
 DATED SEPT. 10, 1946
 BEGINNING OF PROJECT CHANGED
 FROM STA. 0+10 TO STA. 11+50
 SEE NOTE ON LAYOUT SHEET 5
 PERTAINING TO THIS CHANGE
 ORDER.
 LAYOUT SHEET 4, AND CROSS SECTION
 SHEETS 41 TO 48 INCLUSIVE, ARE
 NOT NOW NEEDED.

1150 FT.
 BEGINNING AT A POINT 1150 FT. SOUTH EASTERLY OF THE RICHFORD BRANCH OF THE C.V. RR. IN SHELDON SPRINGS AND EXTENDING SOUTHERLY AND EASTERLY 36 FEET OF RR. CROSSINGS.

LENGTH OF PROJECT
 ROADWAY 15443.3 FEET = 2.924 MILES
 BRIDGE 605.0 FEET = 0.114 MILES
 TOTAL 16048.3 FEET = 3.038 MILES



COUNTY LINE	---
TOWN LINE	---
FENCE LINE	---
STONE WALL	---
UNFENCED PR. PERTY.	---
GUARD RAIL	---
TRAVELED WAY	---
RAILROAD	---
RETAINING WALL	---
CENTER LINE	---
SURVEY LINE	---
CULVERT	---
DROP INLET	---
TROLLEY POLE	---
POWER POLE	---
TELEPHONE POLE	---
TREES	---
Hedge	---

GROUND ELEVATION	ELFT.
GRADE ELEVATION	ELFT.

DEFLECTION ANGLE	Δ
DEGREE OF CURVE	D.
RADIUS OF CURVE	R.
TANGENT DISTANCE	T.
LENGTH OF CURVE	L.
EXTERNAL DISTANCE	E.
POINT OF INTERSECTION	P. I.
POINT OF CURVE	P. C.
POINT OF TANGENT	P. T.
POINT ON TANGENT	P. O. T.

BRIDGE DATA
 4 SPAN CONT. DECK GIRDER
 LENGTH 605'
 ROADWAY 26' WITH 2'-1/2" WALKS

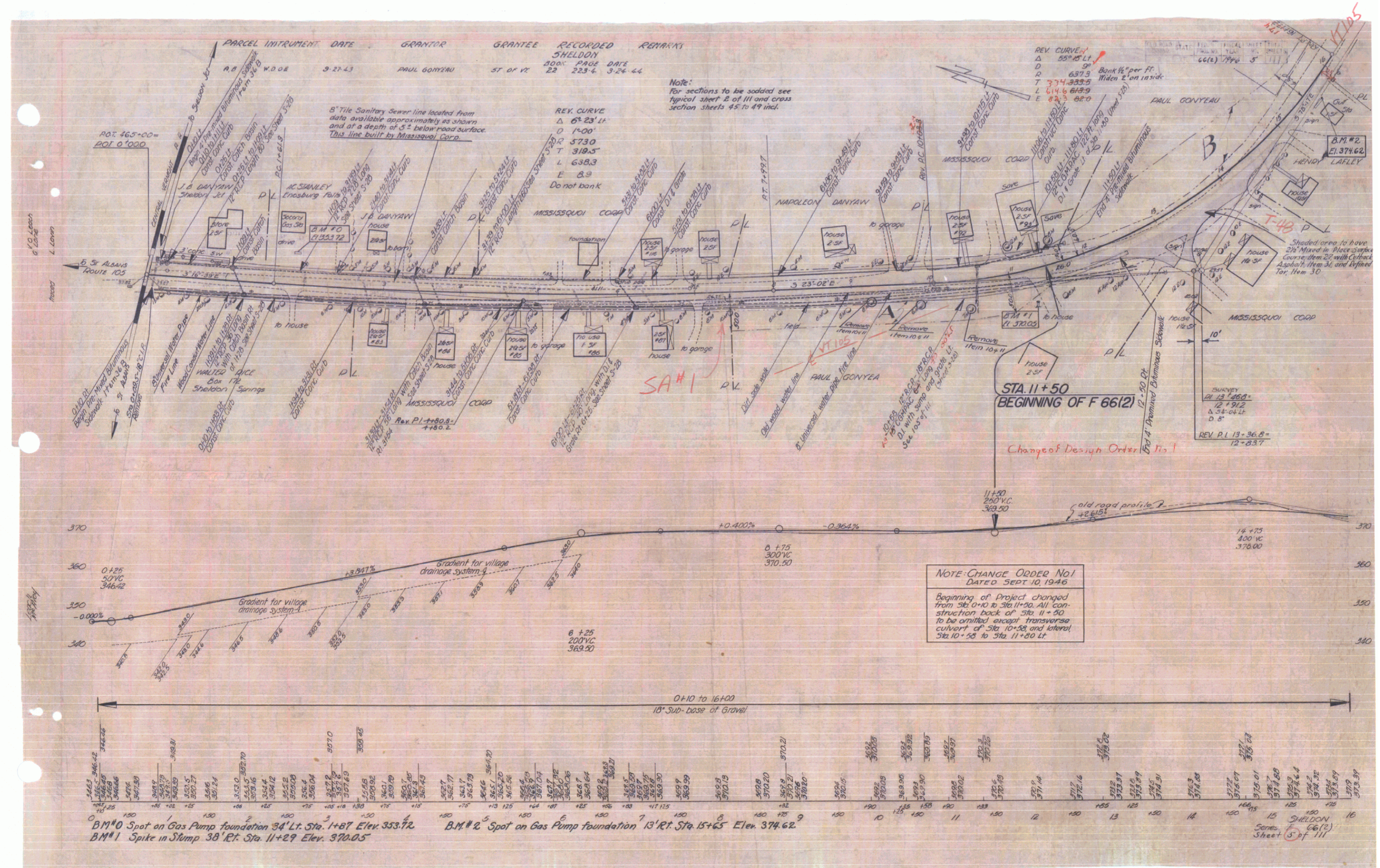
Prepared by
 G.E. Clayton
 District Engineer
 Oct. 1945

Pin: 002159
 Date: 8/27/1945

APPROVED: *September 18, 1945*
 H. Edgerton
 COMMISSIONER OF HIGHWAYS
 SUBMITTED BY ORDER OF THE STATE HIGHWAY BOARD

THESE PLANS ARE SUBJECT TO SUCH REVISIONS AS MAY BE
 REQUIRED BY THE PUBLIC ROADS ADMINISTRATION OR THE COM-
 MISSIONER OF HIGHWAYS.
 CONSTRUCTION IS TO BE CARRIED ON IN ACCORDANCE WITH
 THE PLANS AND THE STANDARD ROAD AND BRIDGE SPECIFICATIONS
 OF 1936, AS APPROVED DECEMBER 29TH, 1936 BY THE PUBLIC
 ROADS ADMINISTRATION, INCLUDING ALL SUBSEQUENT APPROVED
 REVISIONS AND SUCH REVISED SPECIFICATIONS AND SPECIAL
 PROVISIONS AS ARE SUBMITTED WITH THE PLANS.

APPROVED: *Aug 22 1945* ROAD ENGINEER
 APPROVED: *Sept 17 1945* DISTRICT HIGHWAY COMMISSIONER
 SERIES F No. 66(2) FILED
 SHEET 1 OF 111



PARCEL INSTRUMENT	DATE	GRANTOR	GRANTEE	RECORDED SHELDON	REMARKS
A.B.	W.D.O.E.	3-21-43	PAUL GONYEAU	ST OF VT	200' PAGE DATE 22 2234 3-24-44

Note:
For sections to be added see
typical sheet 2 of III and cross
section sheets 45 to 49 incl.

REV. CURVE
 Δ 67°23'11"
 D 1'-00'
 R 5730
 T 318.5
 L 638.3
 E 8.9
 Do not bank

REV. CURVE
 Δ 55°45'11"
 D 9'
 R 637.3
 T 374.3335
 L 614.6
 E 8.9
 Bank 1/4" per ft.
 Widen 2' on inside

NOTE: CHANGE ORDER NO. 1
 DATED SEPT. 10, 1946
 Beginning of Project changed
 from Sta. 0+10 to Sta. 11+50. All
 construction back of Sta. 11+50
 to be omitted except transverse
 culvert of Sta. 10+58 and lateral
 Sta. 10+58 to Sta. 11+80 Lt.

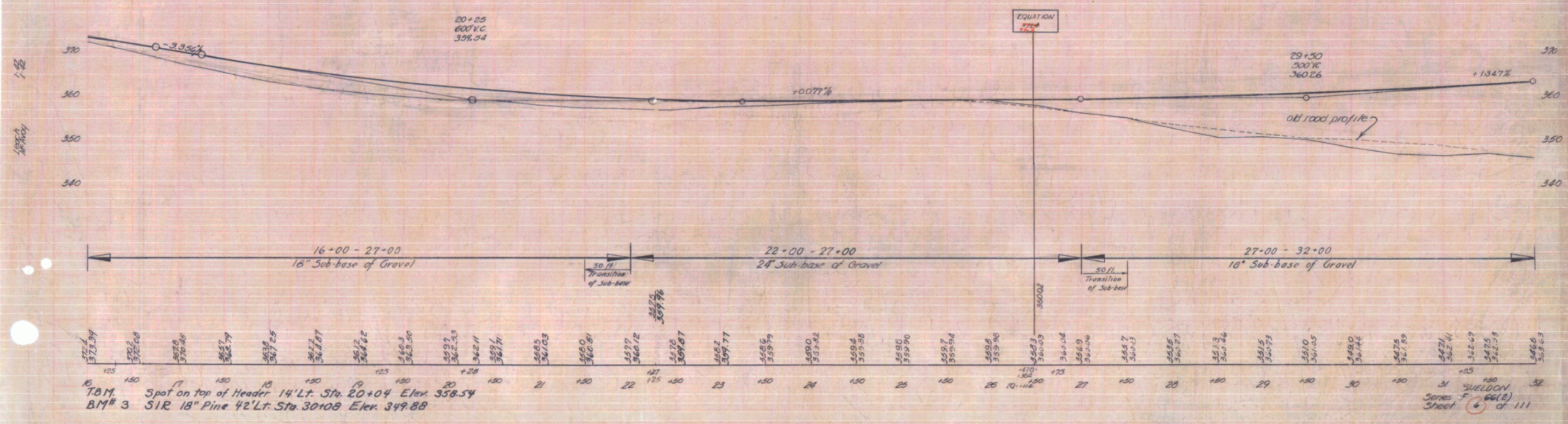
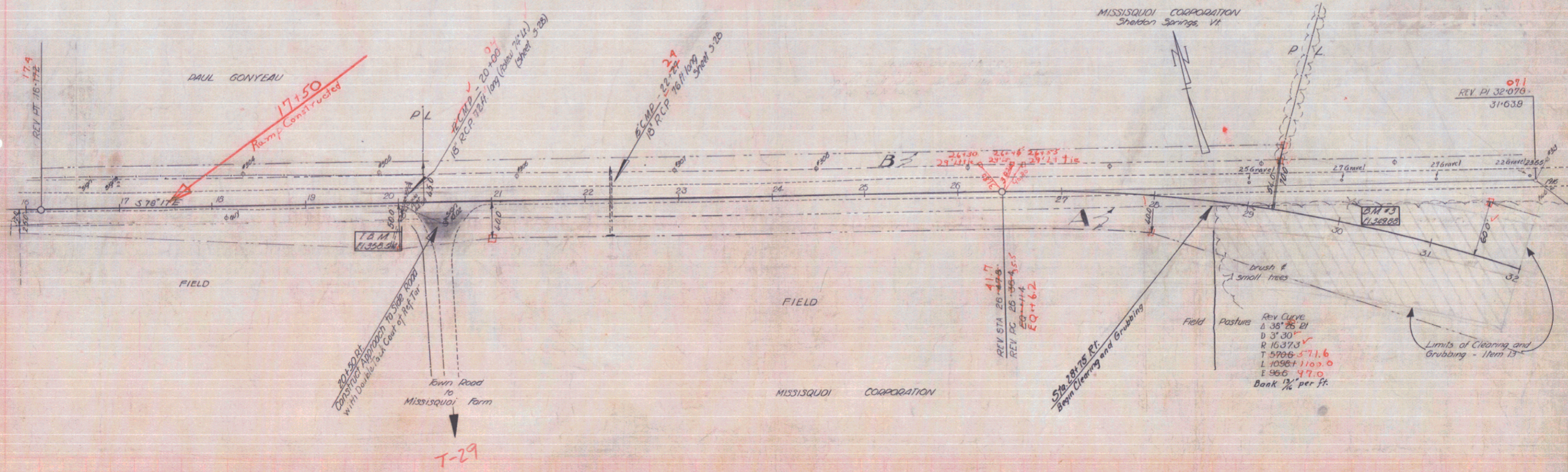
B.M.#0 Spot on Gas Pump foundation 34' Lt. Sta. 1+67 Elev. 353.72
 B.M.#1 Spike in Slump 38' Rt. Sta. 11+29 Elev. 370.05

B.M.#2 Spot on Gas Pump foundation 13' Rt. Sta. 15+65 Elev. 374.62

SHeldon
 Series F 66(2)
 Sheet 5 of 11

PARCEL	INSTRUMENT	DATE	GRANTOR	GRANTEE	RECORDED	REMARKS
A, B	CORP D.O.E.	11-4-43	MISSISSQUOI CORP	ST OF VT	BOOK PAGE DATE	
					22 225-6 3-24-44	

66(2)1946 6 111



TBM Spot on top of Header 14' Lt. Sta. 20+04 Elev. 358.54
 BM# 3 51R 18" Pine 42' Lt. Sta. 30+08 Elev. 349.88

31 SHELDON
 Series F 66(2)
 Sheet 6 of 111

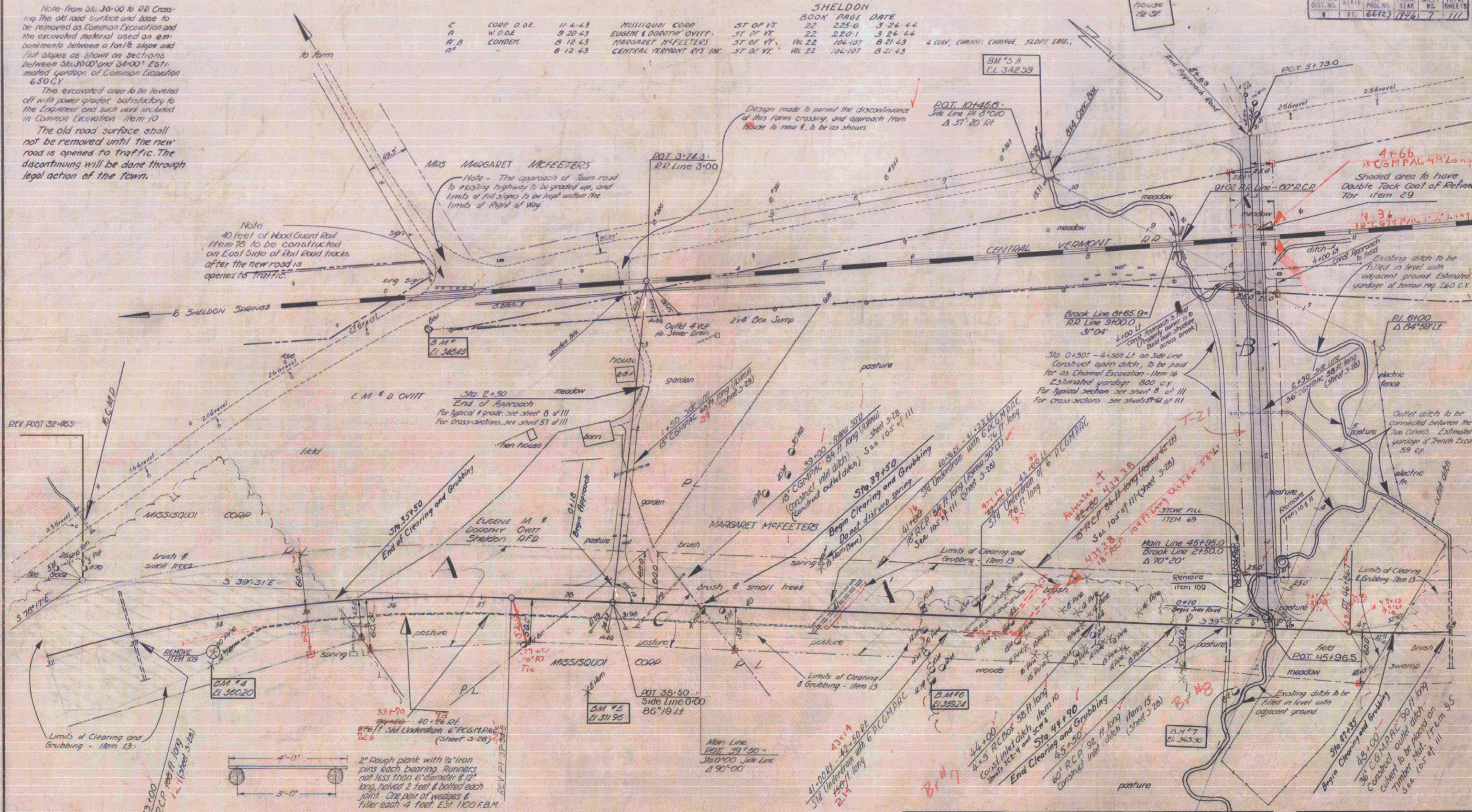
Note from Sls 30-00 to RR Crossing. The old road surface and base to be removed as Common Excavation and the excavated material used on embankments between a 10:1 slope and 1:1 slope as shown on sections between 315+00 and 34+00. Estimated yardage of Common Excavation 650 C.Y.

The excavated area to be leveled off with power grader satisfactory to the Engineer and such work included in Common Excavation Item 10.

The old road surface shall not be removed until the new road is opened to traffic. The discontinuing will be done through legal action of the town.

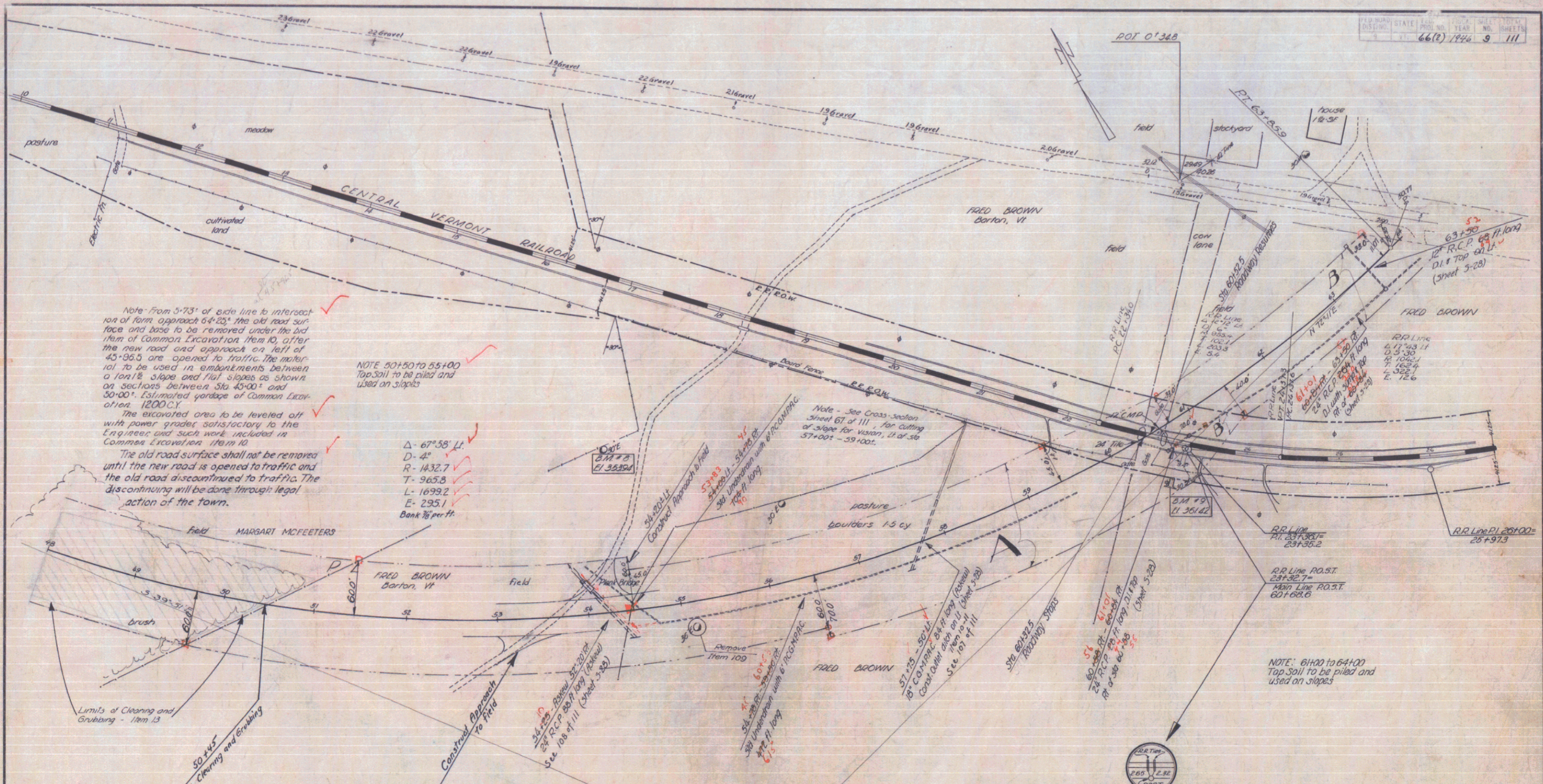
PARCEL INSTRUMENT DATE	GRANTOR	GRANTEE	RECORDED SHELDON BOOK PAGE DATE	REMARKS
C	CORP D.O.E.	MILLSQUI COOP	ST OF 12 22 225.6 3-24-44	
A	W.D.O.E.	EUGENE & DOROTHY OVIIT	ST OF 17 22 220.1 3-24-44	
P-2	CONDEN.	MARGARET MCFEETERS	ST OF 17 22 106-107 8-21-43	
A-2		CENTRAL VERMONT RR INC.	ST OF 17 22 106-107 8-21-43	& CURV. CHANGE. SLOPE LINE.

FED. ROAD DIST. NO.	STATE	PROJ. NO.	YEAR	SHEET NO.	TOTAL SHEETS
7	VT.	66(2)	1928	7	111



SKETCH SHOWING TIMBER GRILLAGE
ITEM 95
At Culvert Sta 48+00

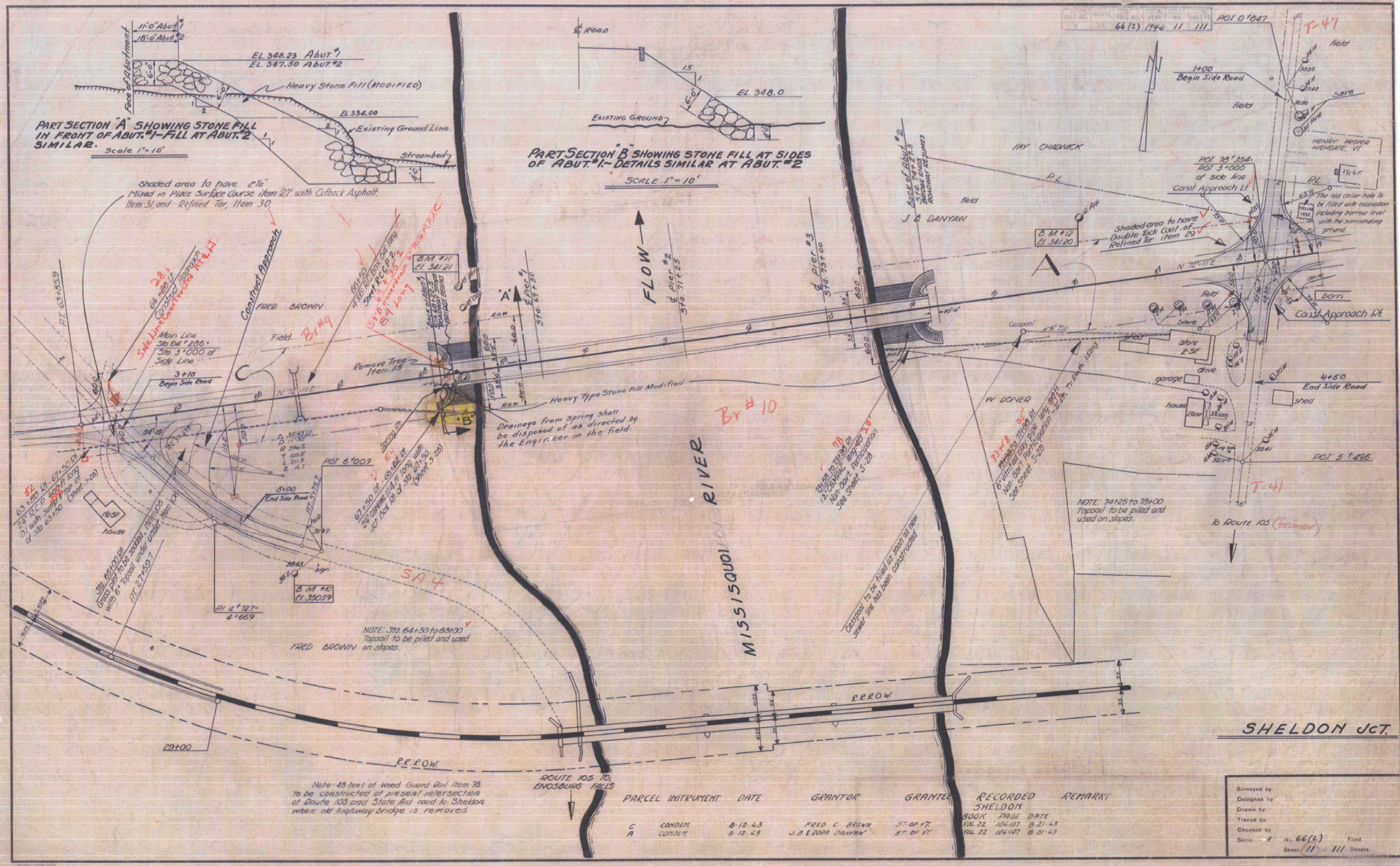
Surveyed by
Designed by
Drawn by
Traced by
Checked by
Series: No. 66(2) File
Sheet 7 of 111 Sheets



PARCEL	INSTRUMENT	DATE	GRANTOR	GRANTEE	RECORDED	REMARKS
A, B	CONDOR.	8-12-43	FRED C. BROWN	ST. OF VT	BOOK PAGE DATE	3-CALV
B'	CONDOR.	8-12-43	CENTRAL VERMONT RY. INC.	ST. OF VT	VOL. 22 106-107 8-21-43	

ESTIMATED QUANTITIES	

Surveyed by
 Designed by
 Drawn by
 Traced by
 Checked by
 Series F No. 66(2) Filed
 Sheet 9 of 111



PART SECTION A SHOWING STONE FILL IN FRONT OF ABUT.#1 - FILL AT ABUT.#2 SIMILAR.
Scale 1"=10'

PART SECTION B SHOWING STONE FILL AT SIDES OF ABUT.#1 - DETAILS SIMILAR AT ABUT.#2
SCALE 1"=10'

shaded area to have 2% Mixed in Place Surface Course Item 27 with Cutback Asphalt, Item 31, and Refined Tar, Item 30.

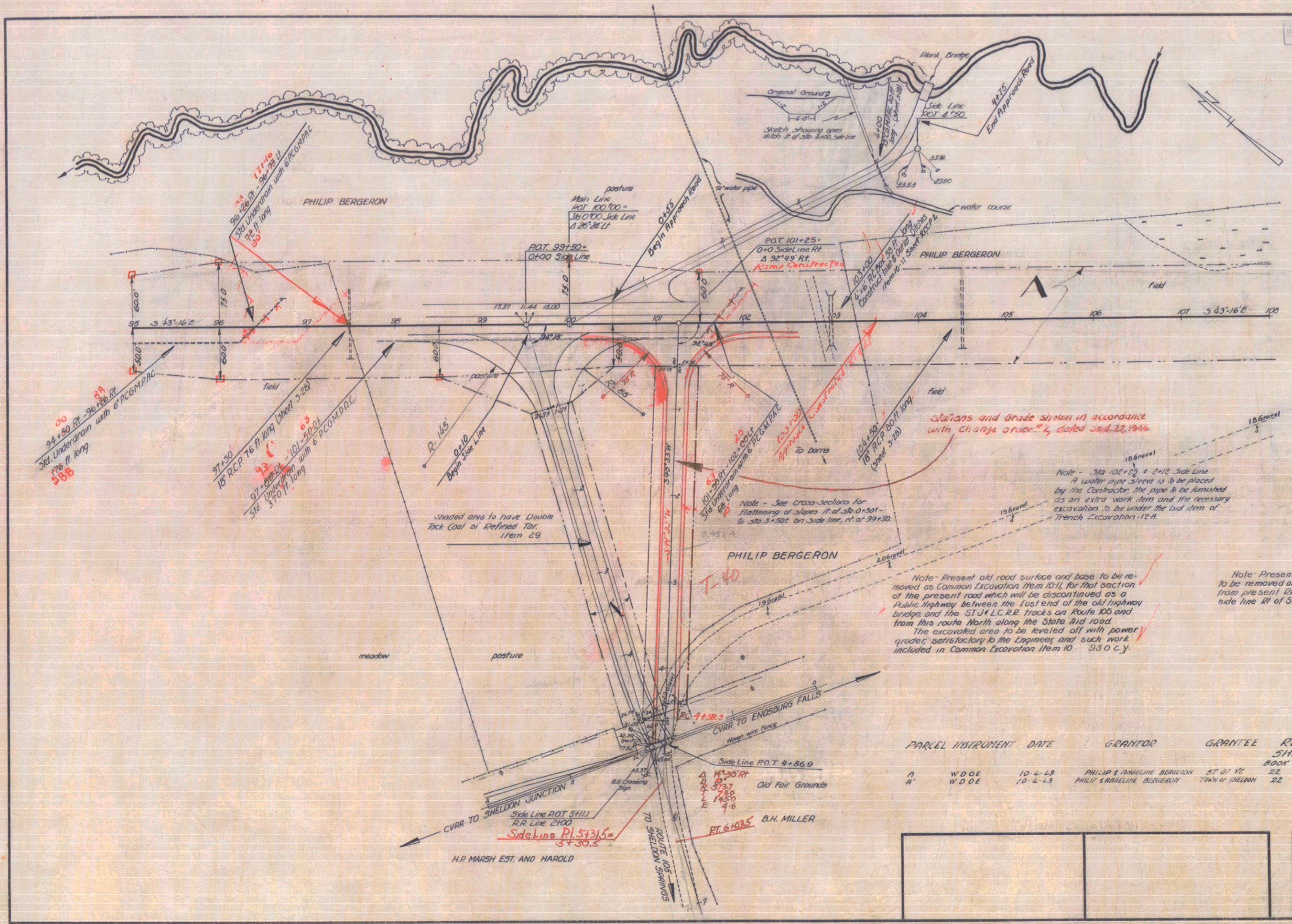
Drainage from spring shall be disposed of as directed by the Engineer in the field.

NOTE: Sta 64+50 to 69+00 Topsoil to be piled and used on slopes.

Note: 48 feet of Wood Guard Rail Item 78 to be constructed at present intersection of Route 105 and State Aid road to Sheldon when old highway bridge is removed.

PARCEL INSTRUMENT	DATE	GRANTOR	GRANTEE	RECORDED SHELDON	REMARKS
C	8-12-43	FRED C. BROWN	ST. OF VT.	BOOK PAGE DATE	
A	8-12-45	J. & D. DANYAW	ST. OF VT.	104-22 104-107 8-21-43	
				VAL. 22 104-107 8-21-43	

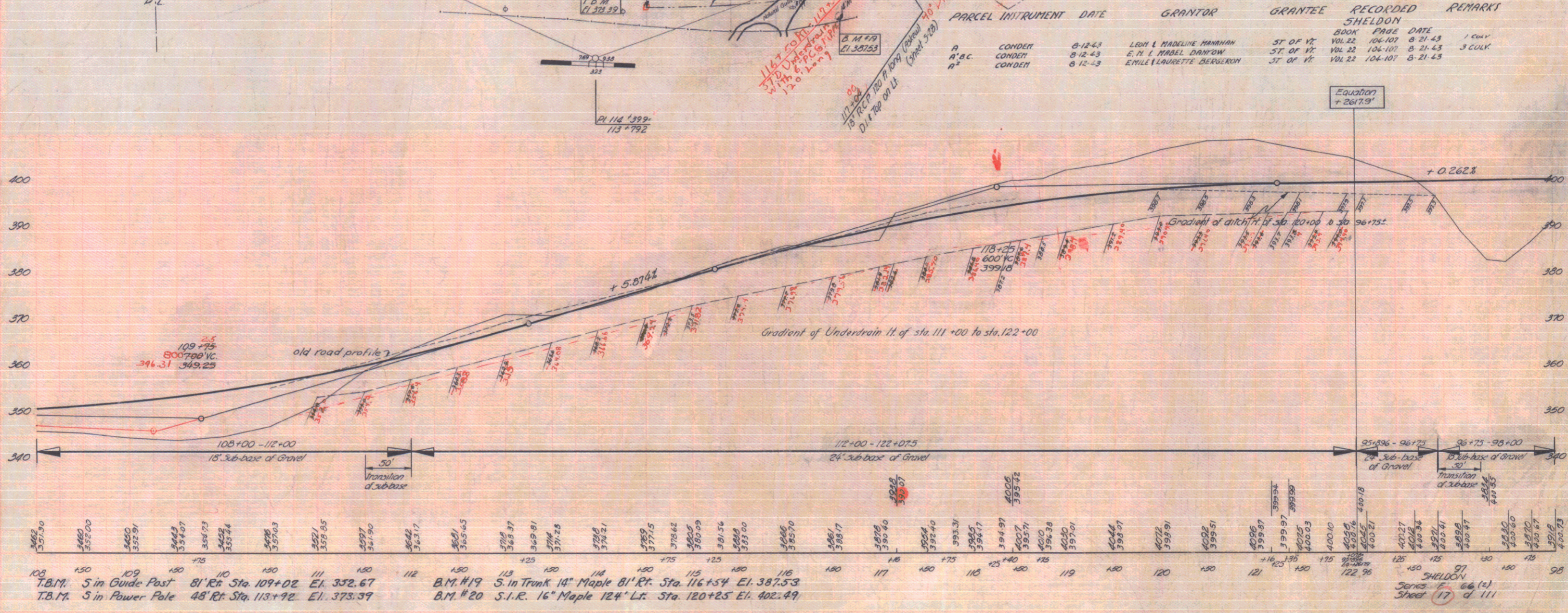
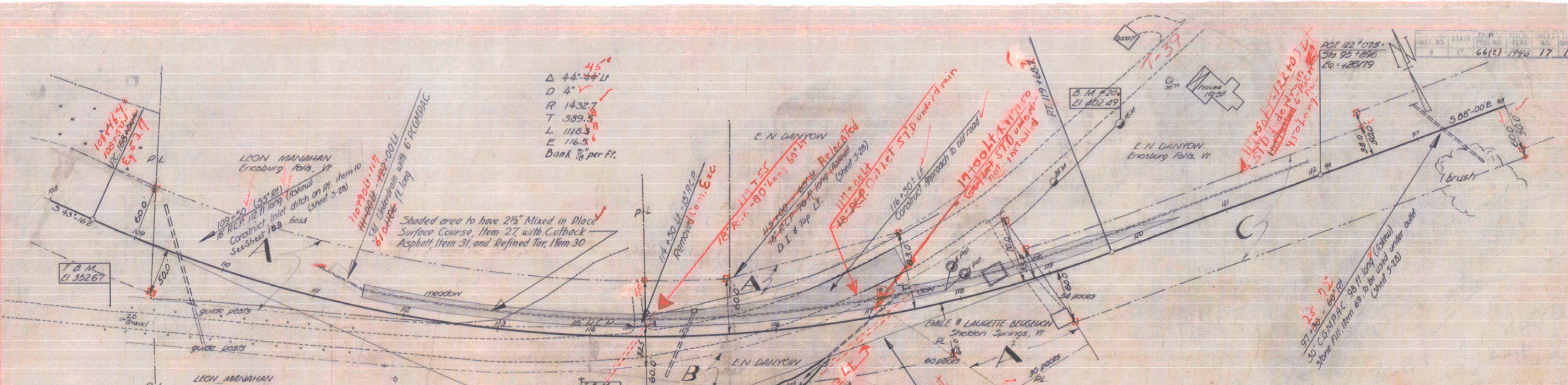
Surveyed by	Designed by	Drawn by	Traced by	Checked by	Series	File
					66(2)	111
						Sheet 11 of 111 Sheets

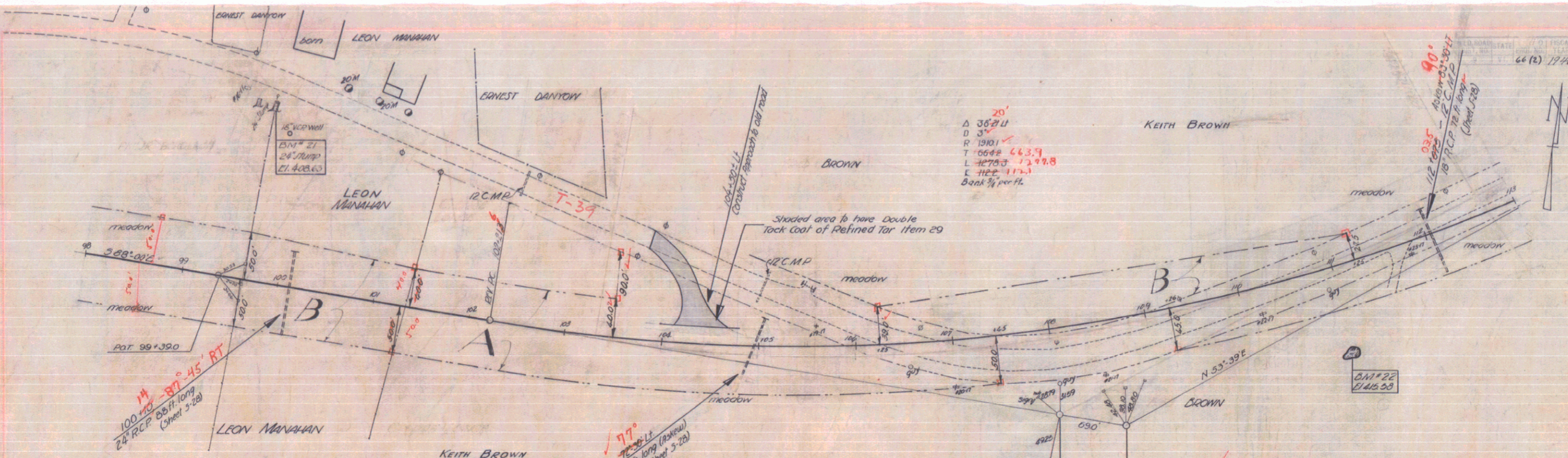


PARCEL	INSTRUMENT	DATE	GRANTOR	GRANTEE	RECORDED	REMARKS
A	W.D.O.E.	10-2-13	PHILIP & MARIE BERGERON	ST. J. V.	22	225-55 5' 2" c.c. & cut
A	W.D.O.E.	10-2-13	PHILIP & MARIE BERGERON	TOWN OF SHELDON	22	217-20 3' 24" c.c. & cut

SHELDON

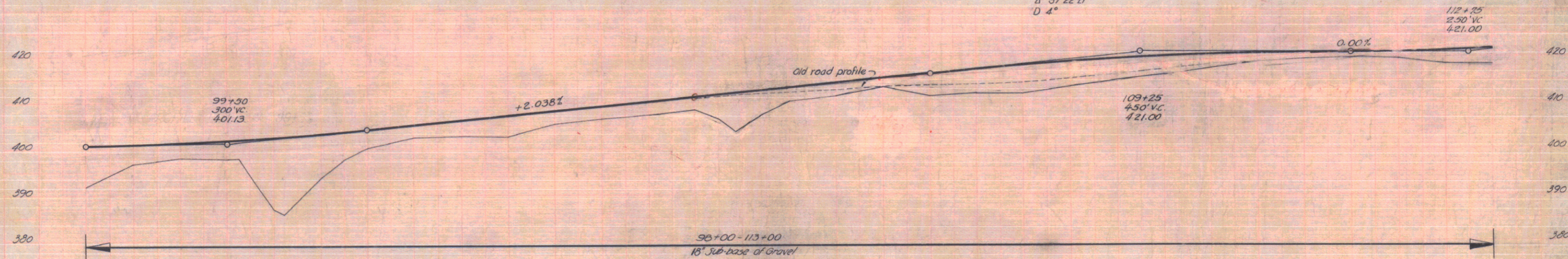
Surveyed by LONE
 Designed by J.E.F.
 Drawn by J.E.F.
 Traced by J.O.C.
 Checked by
 Series 1 Mic. 66(2) Filed
 Sheet 15 of 111





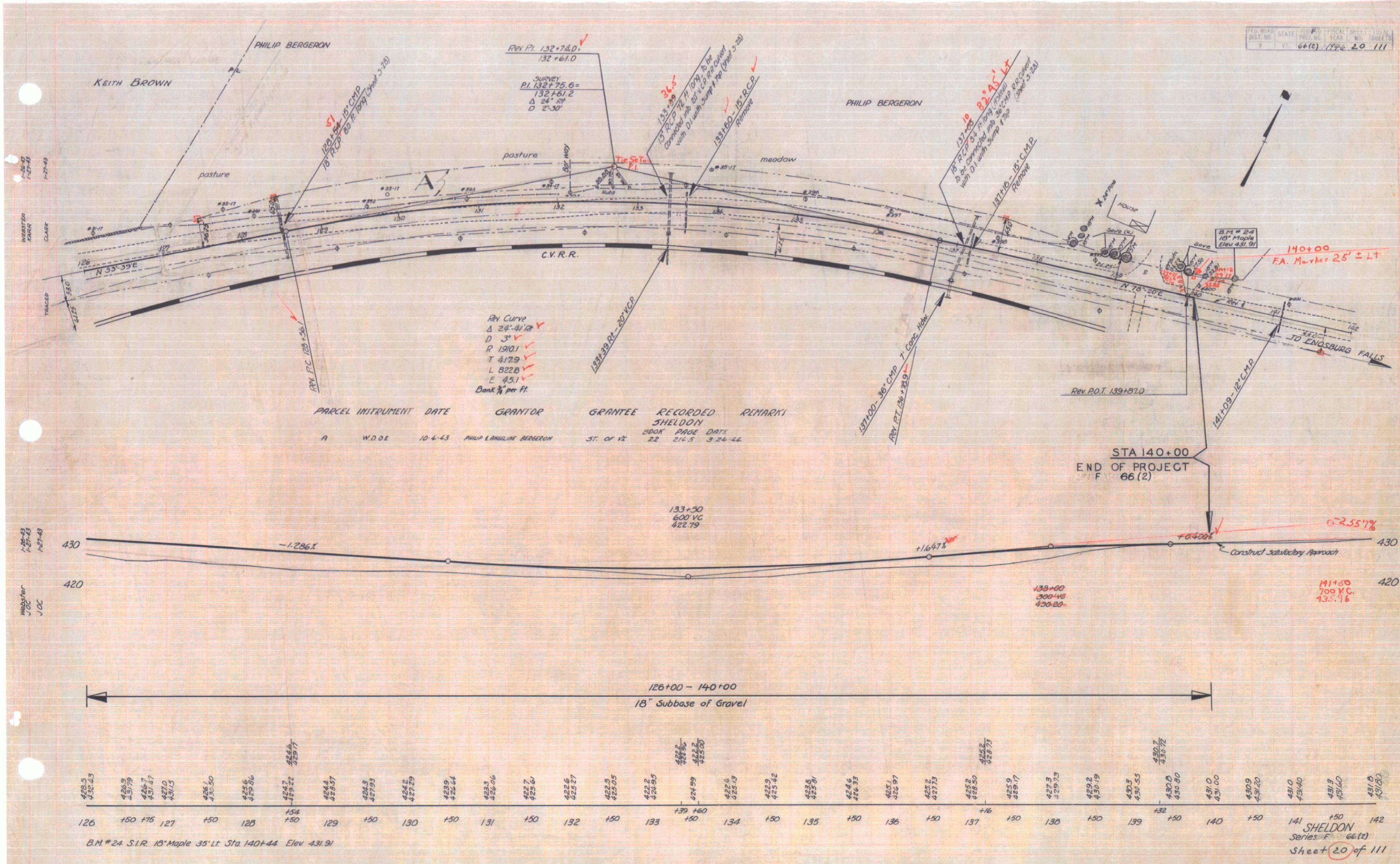
20'
 Δ 38°21' U
 D 3°
 R 1901
 T 66±± 663.7
 L 4270.3 1299.8
 E 112.2 172.1
 Bank 1/4 per ft.

PARCEL	INSTRUMENT	DATE	GRANTOR	GRANTEE	RECORDED	REMARKS
B	CONDENT	8-12-43	LEON & MADELINE MANAHAN	ST OF VT	BOOK PAGE DATE	1 CULV
B.B.	CONDENT	8-12-43	KEITH BROWN	ST OF VT	VOL 22 104-107 8-21-43	1 CULV



Station	Elevation
99+00	400.73
99+10	400.83
99+20	400.30
99+30	401.13
99+40	401.13
99+50	401.13
99+60	401.13
99+70	401.13
99+80	401.13
99+90	401.13
100+00	401.13
100+10	401.13
100+20	401.13
100+30	401.13
100+40	401.13
100+50	401.13
100+60	401.13
100+70	401.13
100+80	401.13
100+90	401.13
101+00	401.13
101+10	401.13
101+20	401.13
101+30	401.13
101+40	401.13
101+50	401.13
101+60	401.13
101+70	401.13
101+80	401.13
101+90	401.13
102+00	401.13
102+10	401.13
102+20	401.13
102+30	401.13
102+40	401.13
102+50	401.13
102+60	401.13
102+70	401.13
102+80	401.13
102+90	401.13
103+00	401.13
103+10	401.13
103+20	401.13
103+30	401.13
103+40	401.13
103+50	401.13
103+60	401.13
103+70	401.13
103+80	401.13
103+90	401.13
104+00	401.13
104+10	401.13
104+20	401.13
104+30	401.13
104+40	401.13
104+50	401.13
104+60	401.13
104+70	401.13
104+80	401.13
104+90	401.13
105+00	401.13
105+10	401.13
105+20	401.13
105+30	401.13
105+40	401.13
105+50	401.13
105+60	401.13
105+70	401.13
105+80	401.13
105+90	401.13
106+00	401.13
106+10	401.13
106+20	401.13
106+30	401.13
106+40	401.13
106+50	401.13
106+60	401.13
106+70	401.13
106+80	401.13
106+90	401.13
107+00	401.13
107+10	401.13
107+20	401.13
107+30	401.13
107+40	401.13
107+50	401.13
107+60	401.13
107+70	401.13
107+80	401.13
107+90	401.13
108+00	401.13
108+10	401.13
108+20	401.13
108+30	401.13
108+40	401.13
108+50	401.13
108+60	401.13
108+70	401.13
108+80	401.13
108+90	401.13
109+00	401.13
109+10	401.13
109+20	401.13
109+30	401.13
109+40	401.13
109+50	401.13
109+60	401.13
109+70	401.13
109+80	401.13
109+90	401.13
110+00	401.13
110+10	401.13
110+20	401.13
110+30	401.13
110+40	401.13
110+50	401.13
110+60	401.13
110+70	401.13
110+80	401.13
110+90	401.13
111+00	401.13
111+10	401.13
111+20	401.13
111+30	401.13
111+40	401.13
111+50	401.13
111+60	401.13
111+70	401.13
111+80	401.13
111+90	401.13
112+00	401.13
112+10	401.13
112+20	401.13
112+30	401.13
112+40	401.13
112+50	401.13
112+60	401.13
112+70	401.13
112+80	401.13
112+90	401.13
113+00	401.13

B.M. # 21 Sta. 28' stamp
 B.M. # 22 Rock
 178' L.F. Sta. 99+70 El. 408.63
 85' R.F. Sta. 111+00 El. 415.58
 150' SHELTON
 66 (2)
 18 of 111



REV. CURVE
 Δ 24° 41' 17" ✓
 D 3' ✓
 R 1910.1 ✓
 T 417.9 ✓
 L 822.8 ✓
 E 45.1 ✓
 Bank 1/4" per ft.

PARCEL	INSTRUMENT	DATE	GRANTOR	GRANTEE	RECORDED	REMARKS
A	W.D.O.E.	10-4-43	PHILIP LANGLINE BERGERON	ST. OF IX	22 214.5	3-24-44

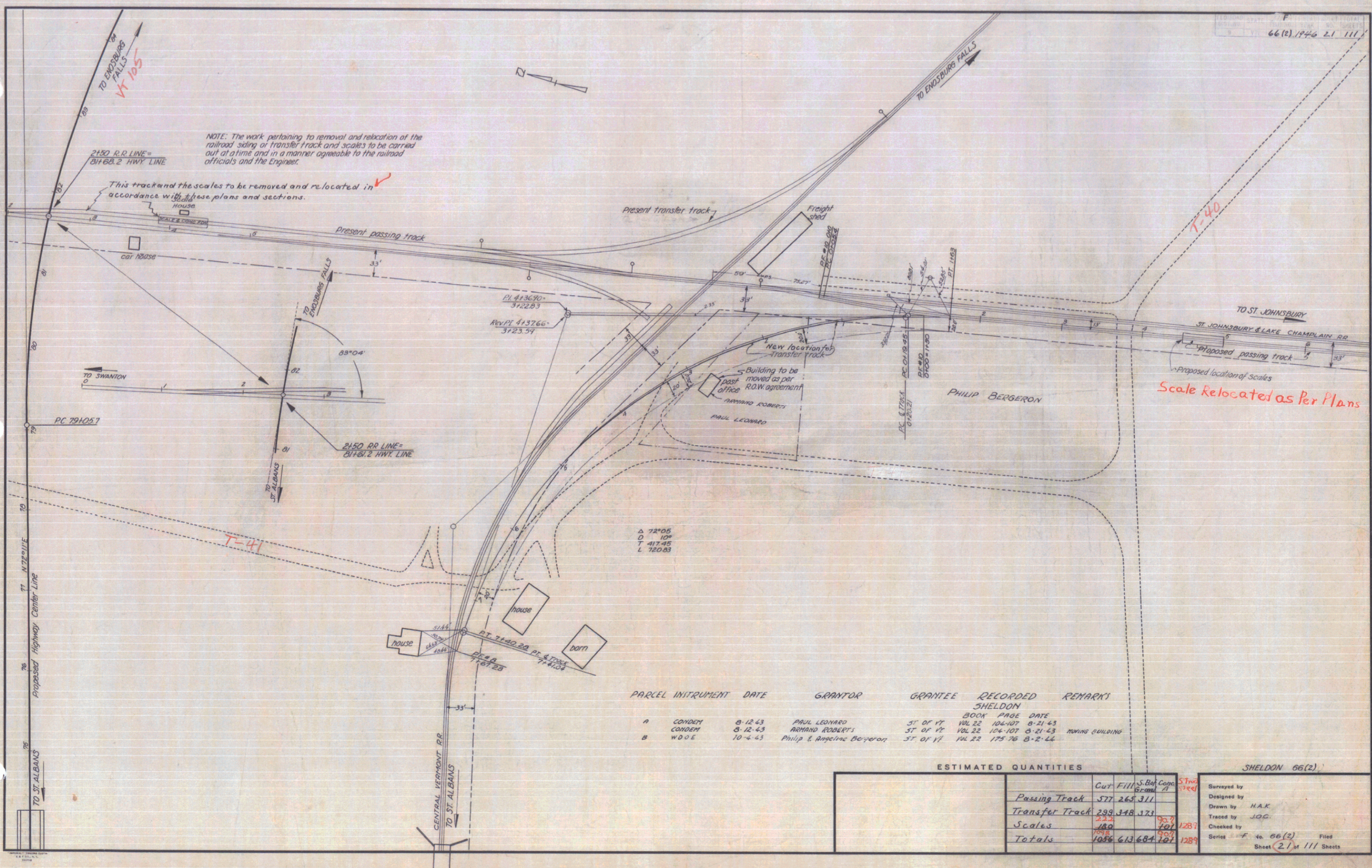
126+00 - 140+00
18" Subbase of Gravel

428.3	428.45	428.5	428.55	428.6	428.65	428.7	428.75	428.8	428.85	428.9	428.95	429.0	429.05	429.1	429.15	429.2	429.25	429.3	429.35	429.4	429.45	429.5	429.55	429.6	429.65	429.7	429.75	429.8	429.85	429.9	429.95	430.0	430.05	430.1	430.15	430.2	430.25	430.3	430.35	430.4	430.45	430.5	430.55	430.6	430.65	430.7	430.75	430.8	430.85	430.9	430.95	431.0	431.05	431.1	431.15	431.2	431.25	431.3	431.35	431.4	431.45	431.5	431.55	431.6	431.65	431.7	431.75	431.8	431.85	431.9	431.95	432.0
126	150	175	127	150	128	152	150	129	150	130	150	131	150	132	150	133	150	134	150	135	150	136	150	137	150	138	150	139	150	140	150	141	150	142																																						

B.M. #24 S.I.R. 18" Maple 35' LT. Sta 140+44 Elev. 431.91
 SHELDON Series F 66(2) Sheet 20 of 111

NOTE: The work pertaining to removal and relocation of the railroad siding of transfer track and scales to be carried out at a time and in a manner agreeable to the railroad officials and the Engineer.

This track and the scales to be removed and re-located in accordance with these plans and sections.



PARCEL	INSTRUMENT	DATE	GRANTOR	GRANTEE	RECORDED SHELDON	REMARKS
A	CONDEM	8-12-43	PAUL LEONARD	ST OF VT	BOOK PAGE DATE	
	CONDEM	8-12-43	ARMAND ROBERTS	ST OF VT	104-107 8-21-43	
B	W D O E	10-4-43	Philip & Regine Bergeron	ST OF VT	104-101 8-21-43	MOVING BUILDING
				ST OF VT	175-76 8-2-44	

ESTIMATED QUANTITIES

	Cut	Fill	S. Box	Comp.	St. Wood
Passing Track	577	265	311		
Transfer Track	299	148	171	93.7	
Scales	180		207		1287
Totals	1056	413	689	93.7	1287

SHELDON 66(2)

Surveyed by
 Designed by
 Drawn by HAK
 Traced by JOC
 Checked by
 Series F to 66(2) Filed
 Sheet 21 of 111 Sheets