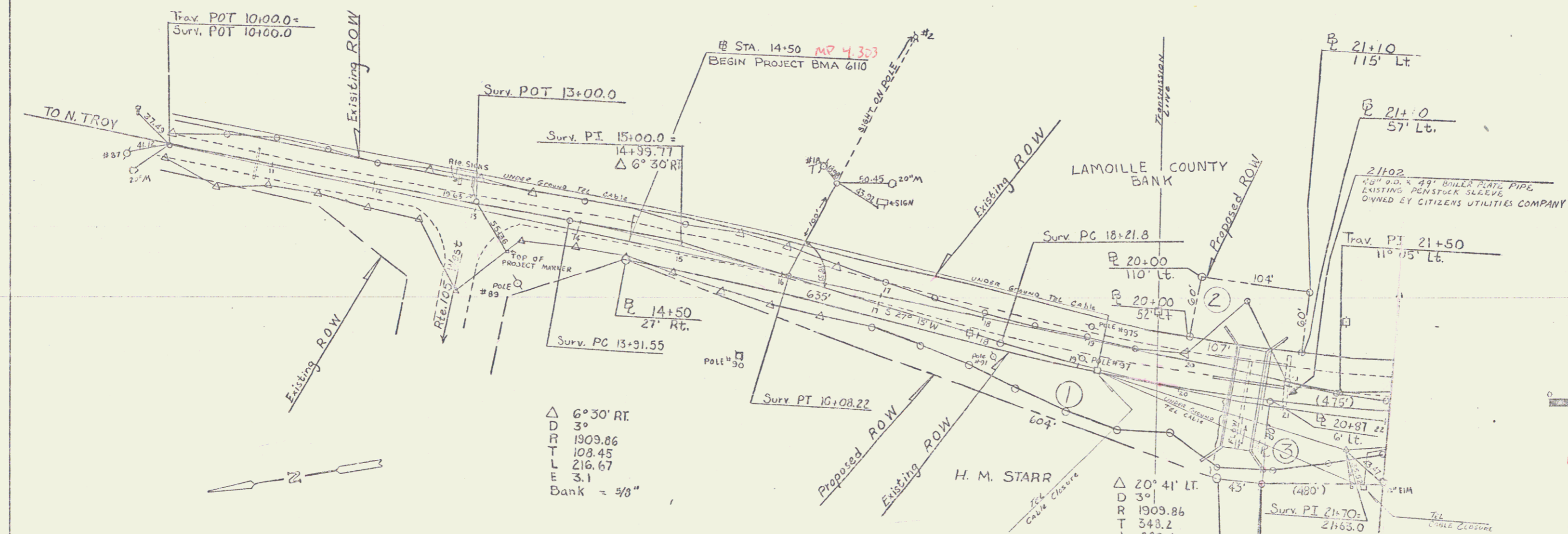
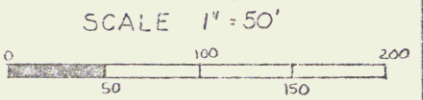


TOWN OF TROY
 Project BMA 6110
 Pin # 00R153
 Route VT 101
 Date 11/1/1970



Δ 6°30' RT.
 D 3°
 R 1909.86
 T 108.45
 L 216.67
 E 3.1
 Bank = 5/8"

Δ 20°41' LT.
 D 3°
 R 1909.86
 T 348.2
 L 663.4
 E 31.5
 Bank = 5/8"



VERMONT DEPARTMENT OF HIGHWAYS
 RIGHT OF WAY PLANS
 PROJECT: VERMONT ROUTE 101
 OVER JAY BRANCH
 BMA 6110
 TOWN OF TROY NOVEMBER, 1970
 SHEET 1 OF 2

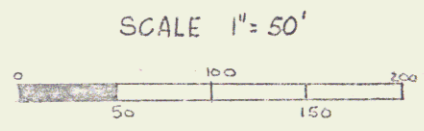
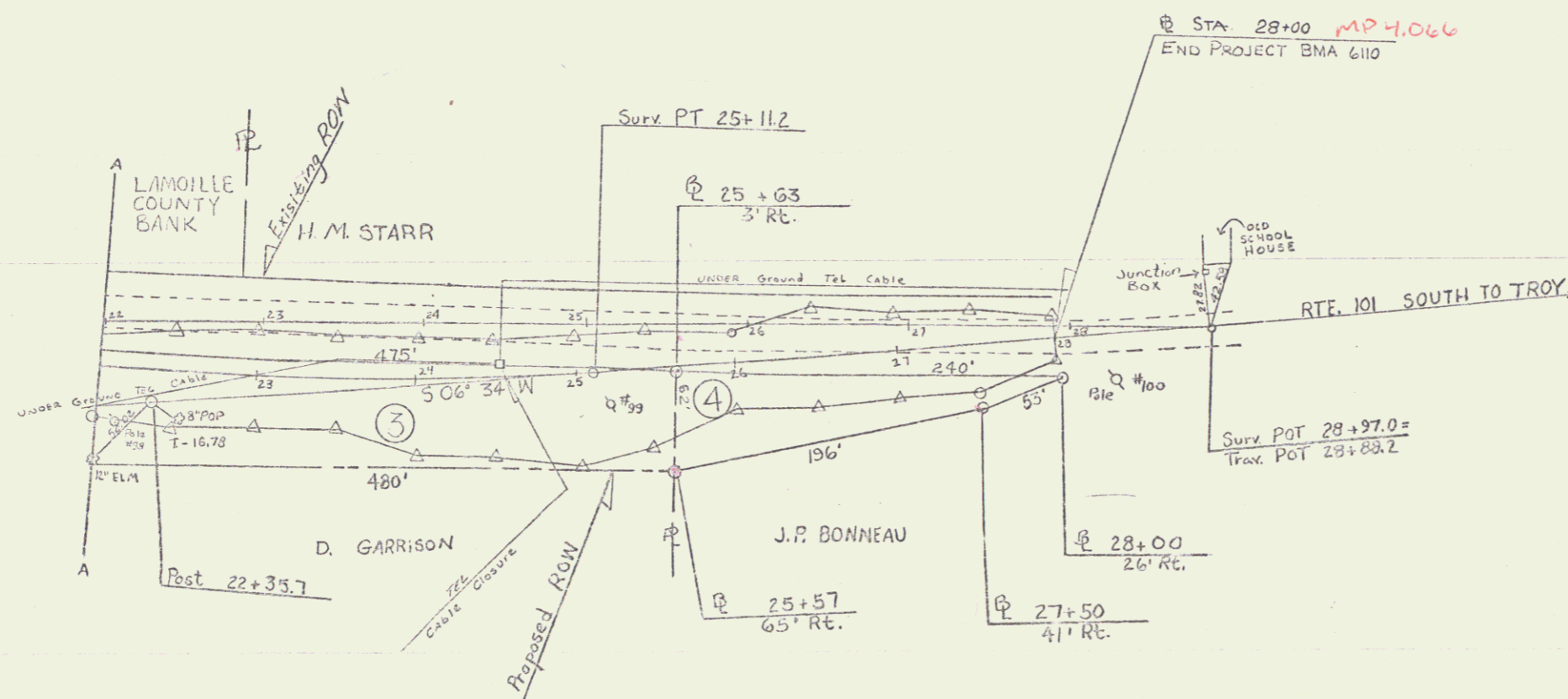
Parcel #1 Hazel M. Starr
 Beg. Sta. @ 14+50 Rt. - End Sta. @ 20+92 Rt.
 Taking .60 A±

Parcel #2 Lamoille County Bank
 Beg. Sta. @ 20+00 Lt. - End Sta. @ 21+00 Lt.
 Taking .15 A±

Parcel #3 David D. & Benning B. Garrison
 Beg. Sta. @ 20+57 Lt. - End Sta. @ 25+63 Rt.
 Taking .80 A±

Parcel #4 Jean-Baul & Germaine Bonneau
 Beg. Sta. @ 25+57 Rt. - End Sta. @ 28+00 Rt.
 Taking 0.19 A±

Parcel #5 Citizens Utilities Company
 Sta. 21+02 Existing Penstock Sleeve
 See Utility Agreement



VERMONT DEPARTMENT OF HIGHWAYS
 RIGHT OF WAY PLANS
 PROJECT: VERMONT ROUTE 101
 OVER JAY BRANCH
 BMA 610
 TOWN OF TROY NOVEMBER, 1970
 SHEET 2 OF 2