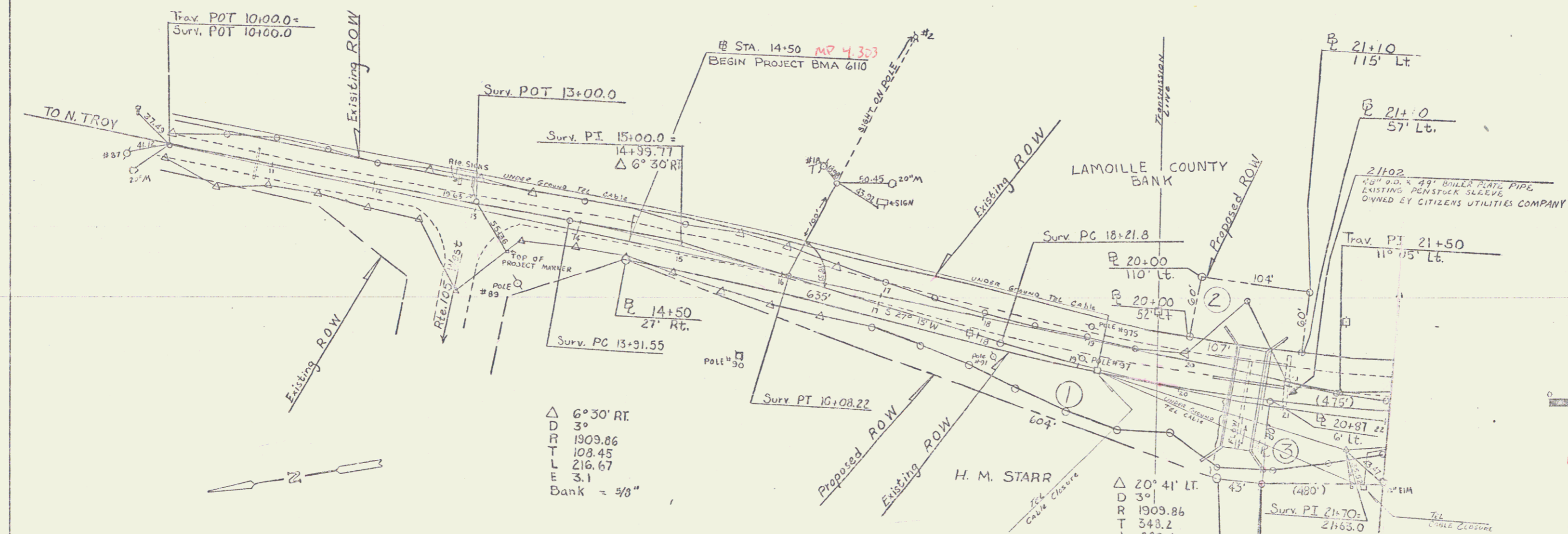
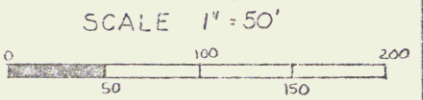


TOWN OF TROY  
 Project BMA 6110  
 Pin # 00R153  
 Route VT 101  
 Date 11/1/1970



$\Delta$  6°30' RT  
 D 3'  
 R 1909.86  
 T 108.45  
 L 216.67  
 E 3.1  
 Bank = 5/8"

$\Delta$  20°41' LT  
 D 3'  
 R 1909.86  
 T 348.2  
 L 663.4  
 E 31.5  
 Bank = 5/8"



VERMONT DEPARTMENT OF HIGHWAYS  
 RIGHT OF WAY PLANS  
 PROJECT: VERMONT ROUTE 101  
 OVER JAY BRANCH  
 BMA 6110  
 TOWN OF TROY NOVEMBER, 1970  
 SHEET 1 OF 2