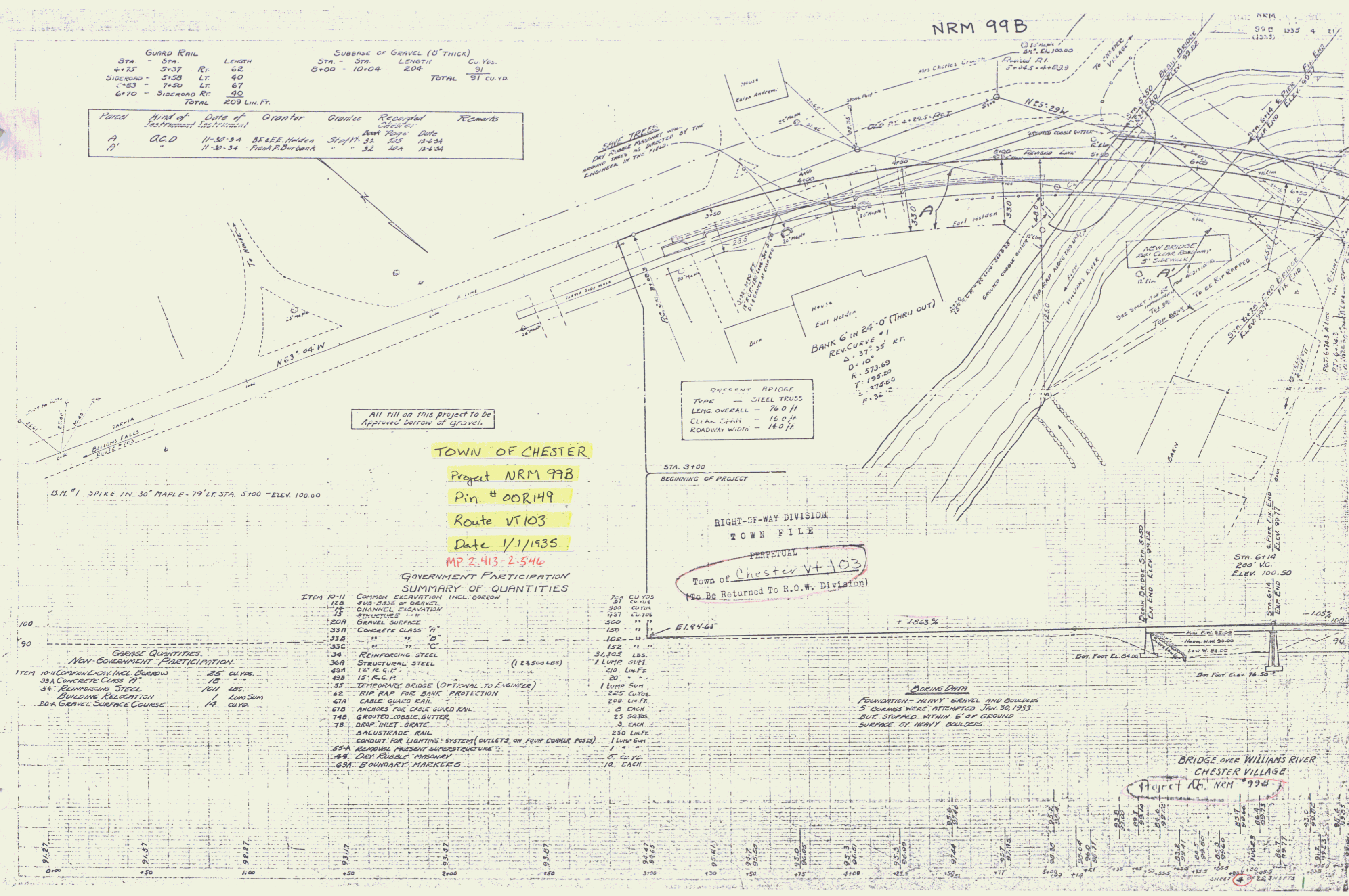


STA	STA	LENGTH	GU. YRS.
4+75	5+37	Rt. 62	
SIDEROAD	5+58	Lt. 40	
5+53	7+50	Lt. 67	
6+70	SIDEROAD	Rt. 40	
TOTAL		209 LIN. FT.	

Parcel	Kind of	Date of	Grantor	Grantee	Recorded	Remarks
A	O.C.D.	11-30-34	B.E.E. Haden	Staff 32	125	12-6-34
A'		11-30-34	Frank P. Burdick	Staff 32	10A	12-6-34



All fill on this project to be approved borrow of gravel.

TOWN OF CHESTER

Project NRM 99B
 Pin # 00R149
 Route VT 103
 Date 1/1/1935
 MP 2.413-2.546

GOVERNMENT PARTICIPATION SUMMARY OF QUANTITIES

ITEM	DESCRIPTION	QUANTITY	UNIT
10-11	COMMON EXCAVATION INCL. BORROW	759	CU. YDS.
12	SUB-BASE OF GRAVEL	91	CU. YD.
13	CHANNEL ELEVATION STRUCTURES	300	CU. YD.
15	GRANITE SURFACE	437	CU. YD.
20A	CONCRETE CLASS 'A'	200	" "
33A	" " 'B'	150	" "
33B	" " 'C'	102	" "
33C	" " 'D'	152	" "
34	REINFORCING STEEL	31,302	LB.
36A	STRUCTURAL STEEL	7	LUMP SUM
40A	12" R.C.P.	20	LINEAL FT.
43B	15" R.C.P.	20	" "
55	TEMPORARY BRIDGE (OPTIONAL TO ENGINEER)	1	LUMP SUM
62	RIP RAP FOR BANK PROTECTION	225	CU. YD.
67A	CABLE GUARD RAIL	200	LINEAL FT.
67B	ANCHORS FOR CABLE GUARD RAIL	2	EACH
74B	GROUTED COBBLE GUTTER	25	SQ. YDS.
78	DROP INLET GRATE	3	EACH
	BALUSTRADE RAIL	250	LINEAL FT.
	CONDUIT FOR LIGHTING SYSTEM (OUTLETS ON FOUR CORNER POSTS)	1	LUMP SUM
55-A	REINFORCING PRECAST SUPERSTRUCTURE	1	" "
48	DRY RUBBLE MASONRY	5	CU. YD.
65A	BOUNDARY MARKERS	10	EACH

GAUGE QUANTITIES

ITEM 10-A	CONCRETE INCL. BORROW	25	CU. YD.
33A	CONCRETE CLASS 'A'	10	" "
34	REINFORCING STEEL	100	LB.
67A	BUILDING RELOCATION	1	LUMP SUM
20-A	GRAVEL SURFACE COURSE	1A	CU. YD.

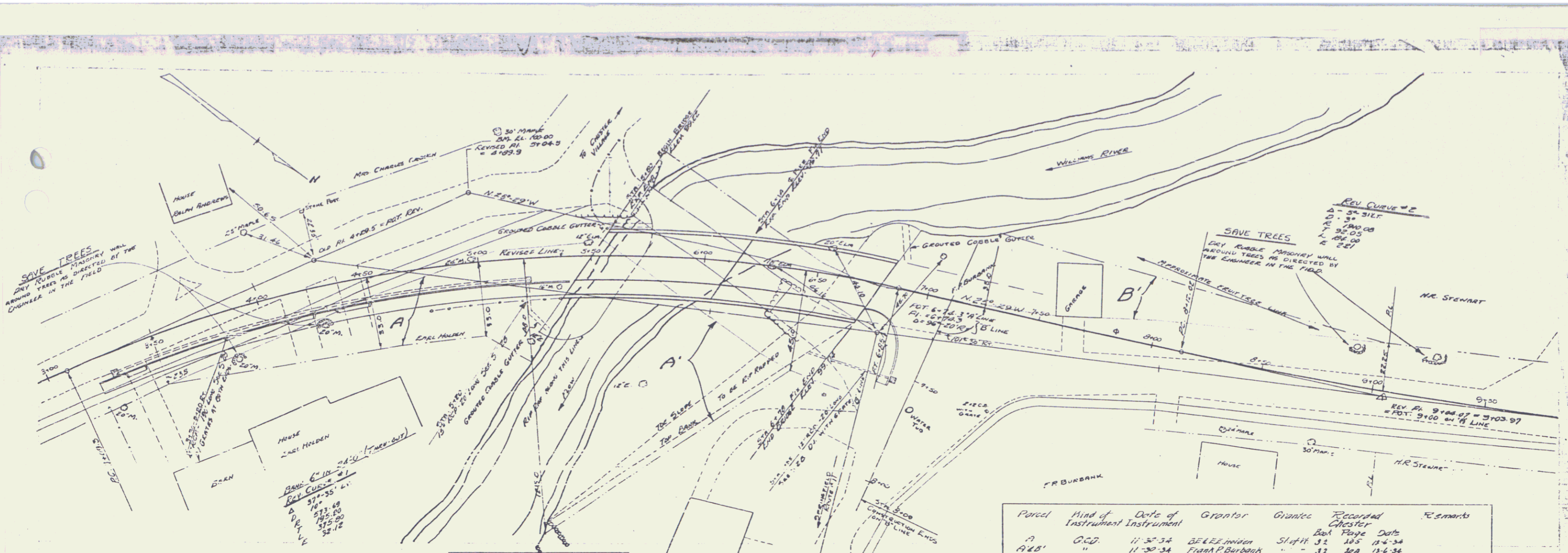
DIFFERENT BRIDGE TYPE - STEEL TRUSS
 LENG. OVERALL - 76.0 FT.
 CLEAR SPAN - 16.0 FT.
 ROADWAY WIDTH - 14.0 FT.

RIGHT-OF-WAY DIVISION
 TOWN FILE
 PERPETUAL
 Town of Chester Vt 103
 (To Be Returned To R.O.W. Division)

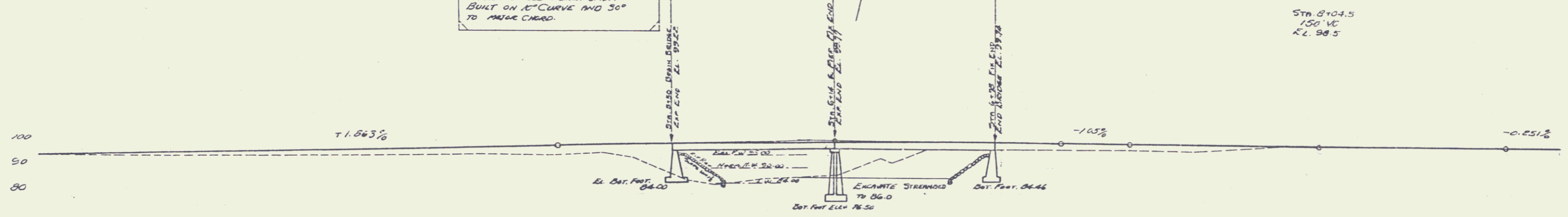
DRIVING DATA
 FOUNDATION - HEAVY GRAVEL AND Boulders
 5 SOILS WERE ATTEMPTED Jan. 30, 1933
 BUT STOPPED WITHIN 6' OF GROUND SURFACE BY HEAVY BOULDERS.

BRIDGE OVER WILLIAMS RIVER
 CHESTER VILLAGE
 Project No. NRM 99B

NRM 99B
 99 B 1935 4 21
 (125)



NEW BRIDGE
 18' CLEAR ROADWAY, 5' SIDEWALK.
 EACH SPAN ON OUTRIG FLOOR.
 APPROX. 60' CLEAR EACH SPAN.
 BUILT ON 12' CURVE AND 30° TO MAKE CLEAR.



Station	Elevation	Station	Elevation	Station	Elevation	Station	Elevation	Station	Elevation	Station	Elevation	Station	Elevation	Station	Elevation	Station	Elevation	Station	Elevation
3+00	91.67	3+10	91.65	3+20	91.42	3+30	91.58	3+40	91.10	3+50	91.05	3+60	91.3	3+70	91.49	3+80	91.5	3+90	91.52
4+00	91.3	4+10	91.31	4+20	91.2	4+30	91.49	4+40	91.6	4+50	91.46	4+60	91.64	4+70	91.51	4+80	91.52	4+90	91.51
5+00	91.38	5+10	91.77	5+20	91.82	5+30	91.8	5+40	91.87	5+50	91.8	5+60	91.87	5+70	91.87	5+80	91.8	5+90	91.8
6+00	91.8	6+10	91.83	6+20	91.8	6+30	91.87	6+40	91.8	6+50	91.87	6+60	91.8	6+70	91.87	6+80	91.8	6+90	91.87
7+00	91.8	7+10	91.83	7+20	91.8	7+30	91.87	7+40	91.8	7+50	91.87	7+60	91.8	7+70	91.87	7+80	91.8	7+90	91.87
8+00	91.8	8+10	91.83	8+20	91.8	8+30	91.87	8+40	91.8	8+50	91.87	8+60	91.8	8+70	91.87	8+80	91.8	8+90	91.87
9+00	91.8	9+10	91.83	9+20	91.8	9+30	91.87	9+40	91.8	9+50	91.87	9+60	91.8	9+70	91.87	9+80	91.8	9+90	91.87

BRIDGE OVER WILLIAMS RIVER
 CHESTER VILLAGE
 N. R. M. # 29B