

INDEX OF SHEETS

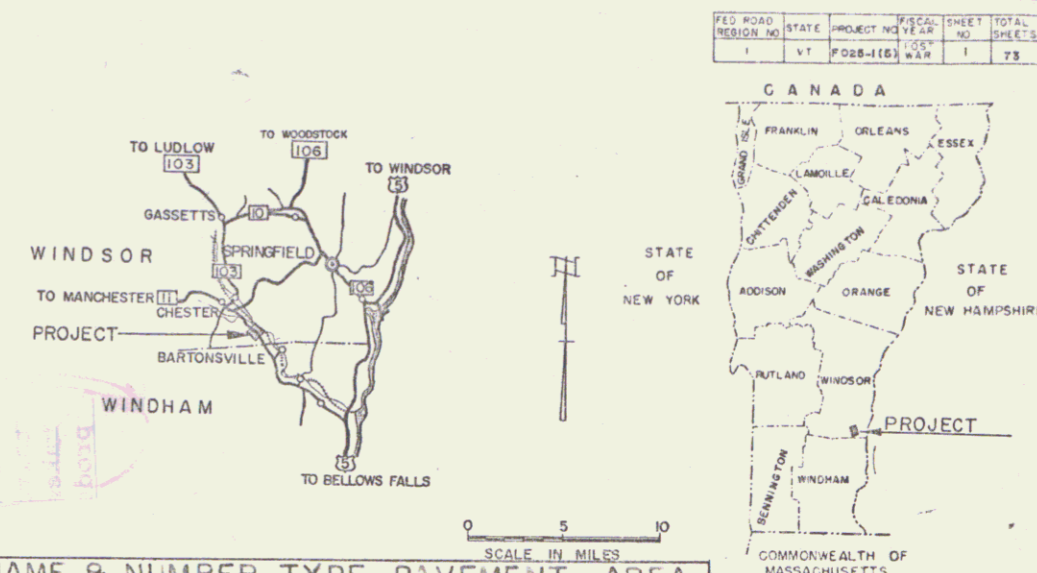
SHEET NO.	TITLE PAGE
1	TYPICAL CROSS SECTIONS OF IMPROVEMENT
2	QUANTITY SUMMARY SHEETS
3-4	ITEM DETAIL AND DRAINAGE SHEET
5	EARTHWORK SHEETS
6-7	PLAN DETAIL SHEET
10-14	PLAN AND PROFILE SHEETS
15	A-61 SOLID ROCK EXCAVATION
16	B-1 BANKING TABLES
17	B-5 TYPICAL SLOPE GRADING
18	B-6 MUCK EXCAVATION
19	B-10 EMBANKMENT ON A SLOPE
20	BLANK
21	D-2 UNDERDRAIN AND HEADWALLS
22	D-3 TREATED GUTTERS
23	D-4 FLUSHING BASINS AND METAL END SECTIONS
24	PLAN
25	F-1 RABBITCADE, SIGNS AND LIGHTS
26	F-31 FEDERAL AID CONSTRUCTION IDENTIFICATION SIGNS
27	G-3 THREE CABLE GUARD RAIL WITH STEEL POSTS
28	G-4 WOOD AND STEEL MARKER AND GUIDE POSTS, PLANK GUARD RAIL.
29	PLAN
30	J-1 PROJECT AND BOUNDARY MARKERS
31	BLANK
32	BLANK
33-73	ROADWAY CROSS SECTIONS

* 9 BLANK
 Sheets Added in Finals
 7-8-63 Final Earthworks
 Check 1 sheet
 Right-of-Way File 1 sheet
 Drainage 1 sheet
 Borrow Pit (16-591-5242) 2 Sheets

**STATE OF VERMONT
 DEPARTMENT OF HIGHWAYS**

PROPOSED IMPROVEMENT

TOWN OF CHESTER
 COUNTY OF WINDSOR
 VERMONT ROUTE 103
 BELLOWS FALLS - LUDLOW ROAD



BEGINNING AT A POINT ON VT. ROUTE 103, IN THE TOWN OF CHESTER, APPROXIMATELY 0.7 MILE NORTH-WESTERLY OF THE ROCKINGHAM-CHESTER TOWN LINE AND EXTENDING NORTHERLY 1.130 MILES

LENGTH OF PROJECT 5,966.76 FEET = 1.130 MILES

PROJECT NAME & NUMBER TYPE PAVEMENT AREA
 CHESTER F 025-1(5) BIT. CONG. PAVT. 15,912 S.Y.

RECORD PLANS
MATERIALS

SUBBASE OF GRAVEL -- EDDY PIT -- CHESTER, VT.
 GRAVEL SHOULDERS -- CHILDS PIT -- PERKINSVILLE, VT.
 REFINED TAR -- WITCO CHEMICAL CO., INC. -- WORCESTER, MASS.
 CUTBACK ASPHALT -- MOBIL OIL CO. -- E. PROVIDENCE, R.I.
 PEA STONE -- COLD RIVER SAND & GRAVEL CO. -- WALPOLE, N.H.
 GRITS -- VERMONT MARBLE CO. -- FLORENCE, VT.
 CRUSHED GRAVEL PLANT MIXED BASE COURSE & BITUMINOUS CONCRETE PAVEMENT -- L.M. PIKE & SON, INC. (PLANTS) -- SPRINGFIELD, VT. & WEST LEBANON, N.H.
 ASPH. CTD. CORR. GALV. METAL PIPE & C.I. COVERS FOR FLUSHING BASINS -- NEW ENGLAND METAL CULVERT CO. -- WHITE RIVER JCT., VT.
 REINFORCED CONCRETE PIPE, PREC. REINF. CONC. DROP INLETS, GUARD RAIL, STEEL GUIDE & MARKER POSTS, TREATED TIMBER CURB & BOUNDARY MARKERS -- S.T. GRISWOLD & CO. INC. -- WILLISTON, VT.
 PREC. R.C. DROP INLET W/STEEL GRATL -- CALEDONIA SAND & GRAVEL CO., IHC. -- ST. JOHNSBURY, VT.

CONTRACTOR - CALEDONIA SAND & GRAVEL CO. INC., ST. JOHNSBURY, VT.
 RESIDENT ENGINEER - ALBERT J. REINHART.
 RECORD PLANS - ALBERT J. REINHART.

CONTRACT : DATED - OCTOBER 14, 1964.
 STARTED - OCTOBER 16, 1964.
 COMPLETED - NOVEMBER 1, 1965.
 ACCEPTED - NOVEMBER 1, 1965.



CONVENTIONAL SIGNS

COUNTY LINE	---
TOWN LINE	---
FENCE LINE	---
STONE WALL	---
UNFENCED PROPERTY	---
GUARD RAIL	---
TRAVELED WAY	---
RAILROAD	---
RETAINING WALL	---
CENTER LINE	---
SURVEY LINE	---
CULVERT	---
DROP INLET	---
TROLLEY POLE	---
POWER POLE	---
TELEPHONE POLE	---
TREES	---
HEDGE	---

CONSTRUCTION IDENTIFICATION SIGN:

GROUND ELEVATION	DATUM	FEET
GRADE ELEVATION	DATUM	FEET
CURVE DATA		
DEFLECTION OF ANGLE	Δ	
DEGREE OF CURVE	D	
RADIUS OF CURVE	R	
TANGENT DISTANCE	T	
EXTERNAL DISTANCE	E	
POINT OF INTERSECTION	PI	
POINT OF CURVE	PC	
POINT OF TANGENT	PT	
POINT ON TANGENT	POT	
POINT ON SUB-TANGENT	POST	

CHESTER F 025-1(5)
 CONTRACTOR - CALEDONIA SAND & GRAVEL CO., INC., ST. JOHNSBURY, VT.
 CONST. COMPLETED - NOVEMBER 1, 1965.
 RECORD PLANS - ALBERT J. REINHART.

CONTRACTOR - CALEDONIA SAND & GRAVEL CO., INC., ST. JOHNSBURY, VT. YEAR 1964-65
 Location Beginning at a point on Vt. Route 103, in the town of Chester, approximately 0.7 miles northwesterly of the Rockingham Town Line and extending northerly 1.130 miles.



RIGHT-OF-WAY DIVISION
TOWN FILE
PERPETUAL
 Town of Vt 103
 (To Be Returned To R.O.W. Division)

THESE PLANS ARE SUBJECT TO SUCH REVISIONS AS MAY BE REQUIRED BY THE BUREAU OF PUBLIC ROADS OR THE COMMISSIONER OF HIGHWAYS.

CONSTRUCTION IS TO BE CARRIED ON IN ACCORDANCE WITH THE PLANS AND THE STANDARD SPECIFICATIONS FOR HIGHWAY AND BRIDGE CONSTRUCTION AS APPROVED JULY 5, 1956, INCLUDING ALL SUBSEQUENT APPROVED REVISIONS AND SUCH REVISED SPECIFICATIONS AND SPECIAL PROVISIONS AS ARE SUBMITTED WITH THE PLANS.

DEPARTMENT OF COMMERCE
 BUREAU OF PUBLIC ROADS

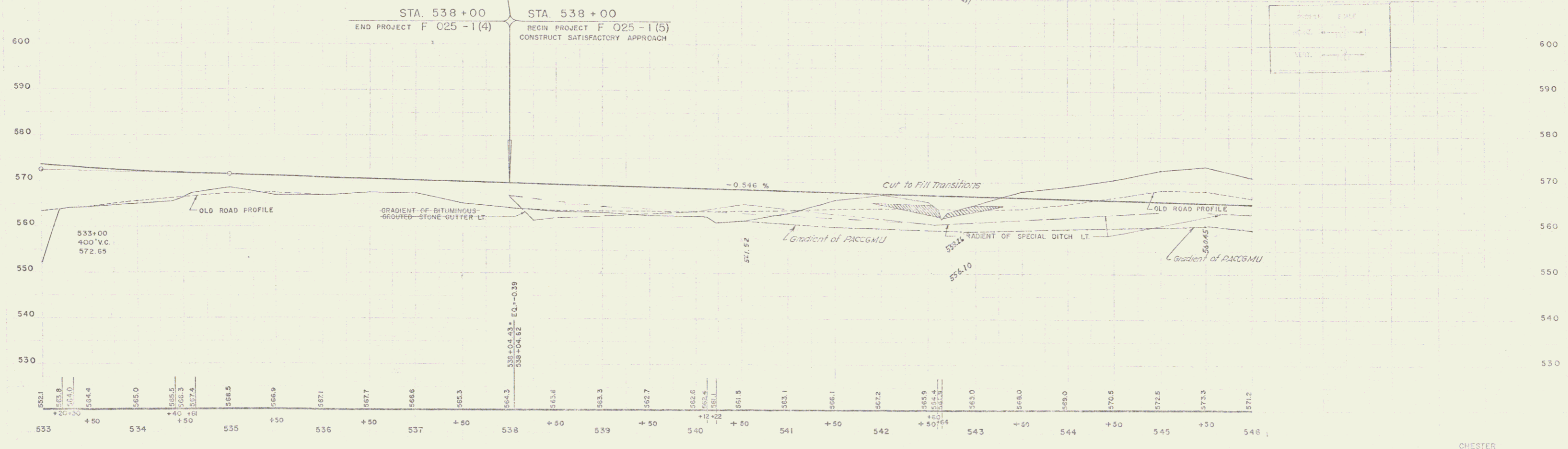
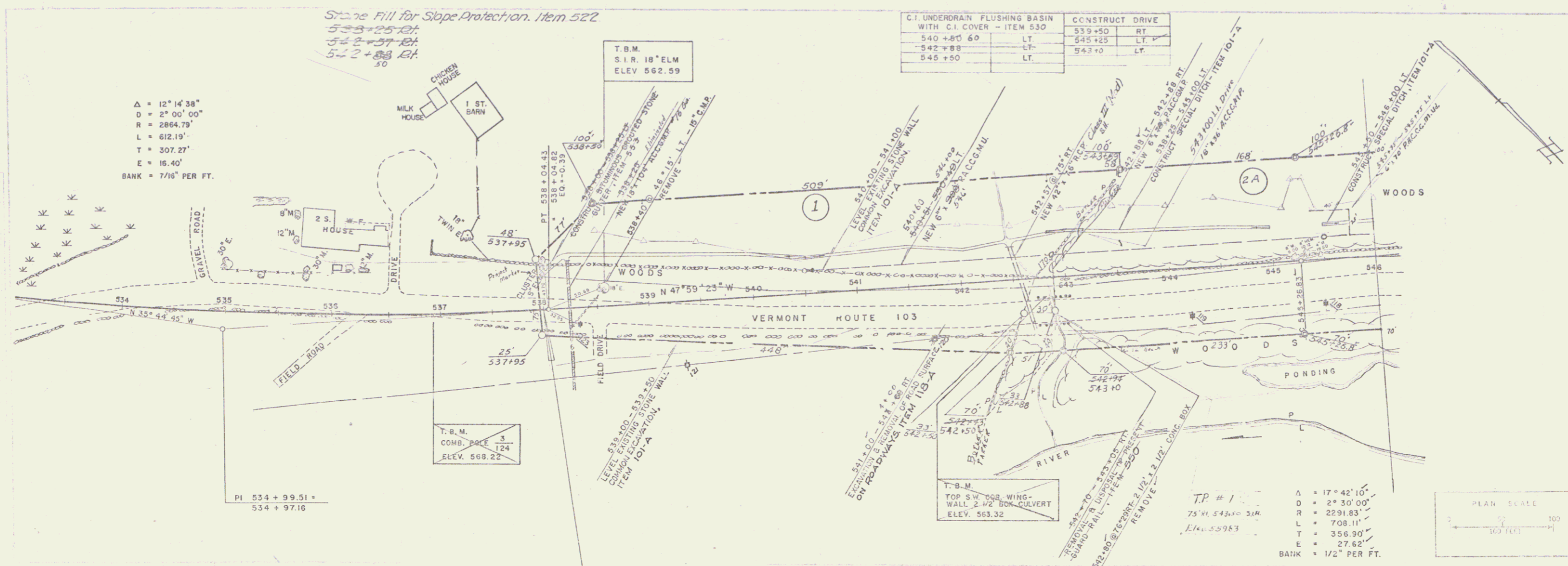
Pin # 00R148

APPROVED _____ DATE _____

PROJECT F NO. 025-1(5)

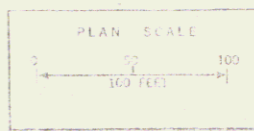
SHEET 1 OF SHEETS 73

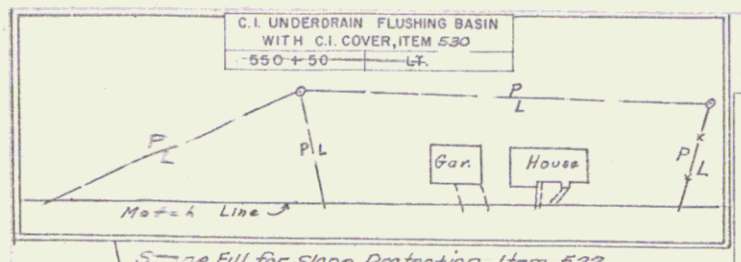
APPROVED _____ DATE _____	APPROVED _____ DATE 12/20/62	APPROVED _____ DATE 12/20/62	APPROVED _____ DATE 12/20/62	APPROVED _____ DATE 12/20/62
SECONDARY ENGINEER	CONSTRUCTION SUPERVISOR	BRIDGE ENGINEER	DISTRICT ENGINEER	CHIEF ENGINEER



C.I. UNDERDRAIN FLUSHING BASIN WITH C.I. COVER - ITEM 530		CONSTRUCT DRIVE	
540+80	60 LT.	539+50	RT.
542+88	LT.	545+25	LT.
545+50	LT.	543+0	LT.

TP # 1
 Δ = 17° 42' 10"
 D = 24 30' 00"
 R = 2291.83'
 L = 708.11'
 T = 356.90'
 E = 27.62'
 BANK = 1/2" PER FT.



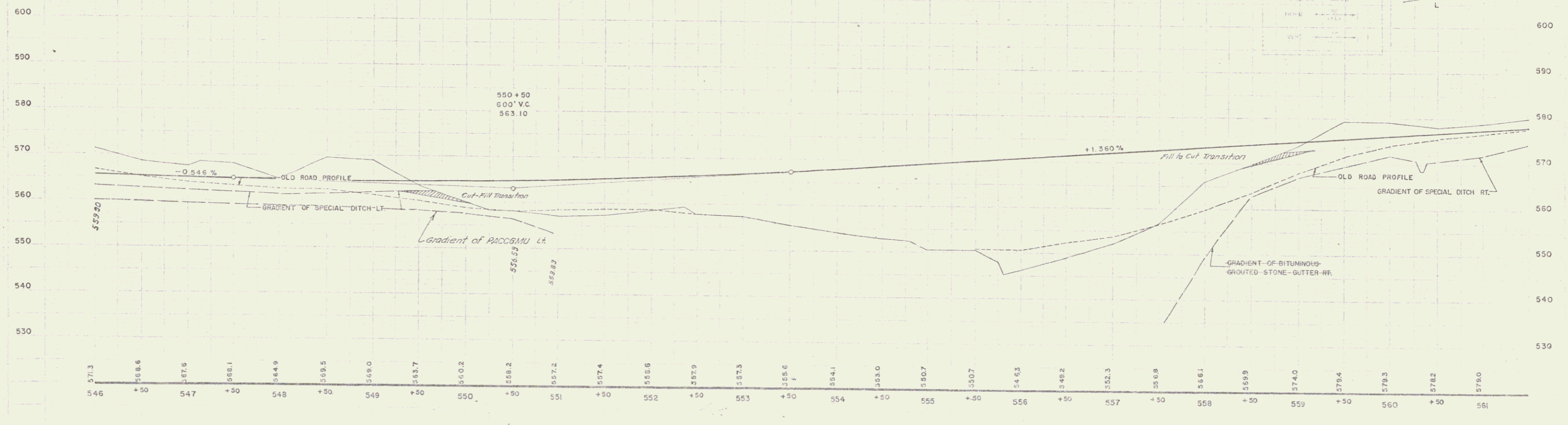
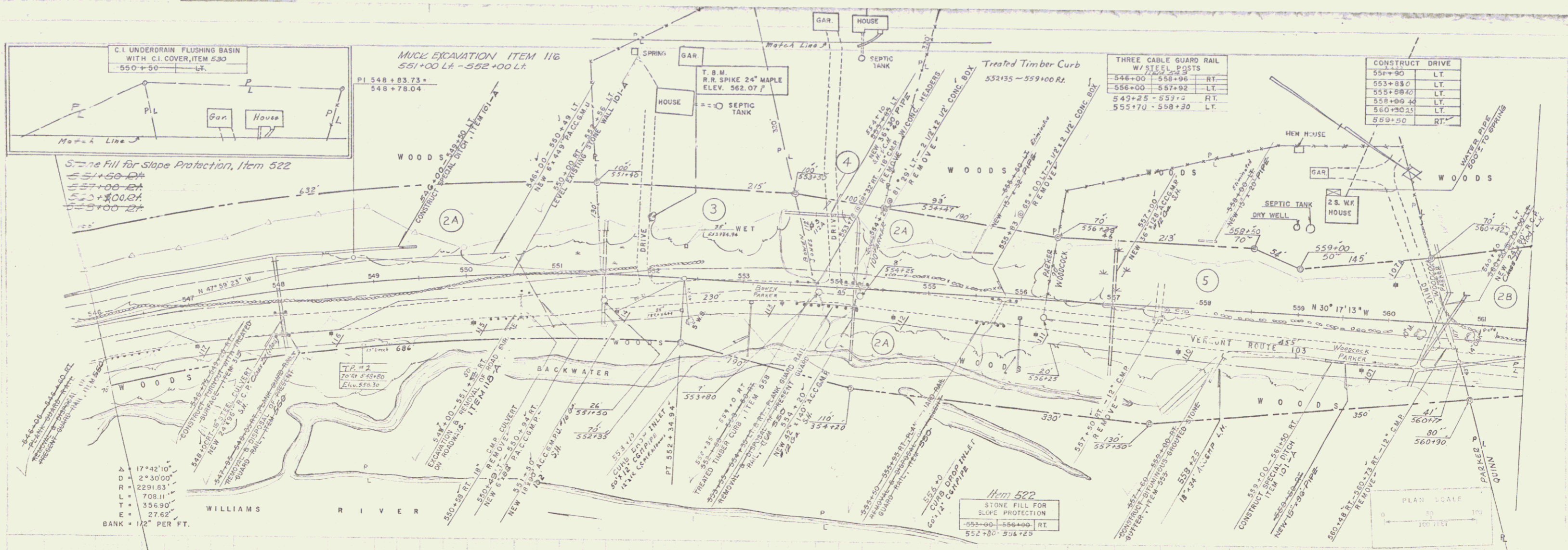


MUCK EXCAVATION ITEM 116
551+00 LT - 552+00 LT

THREE CABLE GUARD RAIL	
W/STEEL POSTS	
546+00 - 546+96	RT.
556+00 - 557+92	LT.
549+25 - 553+00	RT.
555+70 - 558+30	LT.

CONSTRUCT DRIVE	
551+90	LT.
553+80	LT.
555+80	LT.
558+80	LT.
560+30	LT.
559+00	RT.

Stone Fill for Slope Protection, Item 522
551+50 RT
557+00 RT
553+00 RT
553+00 RT



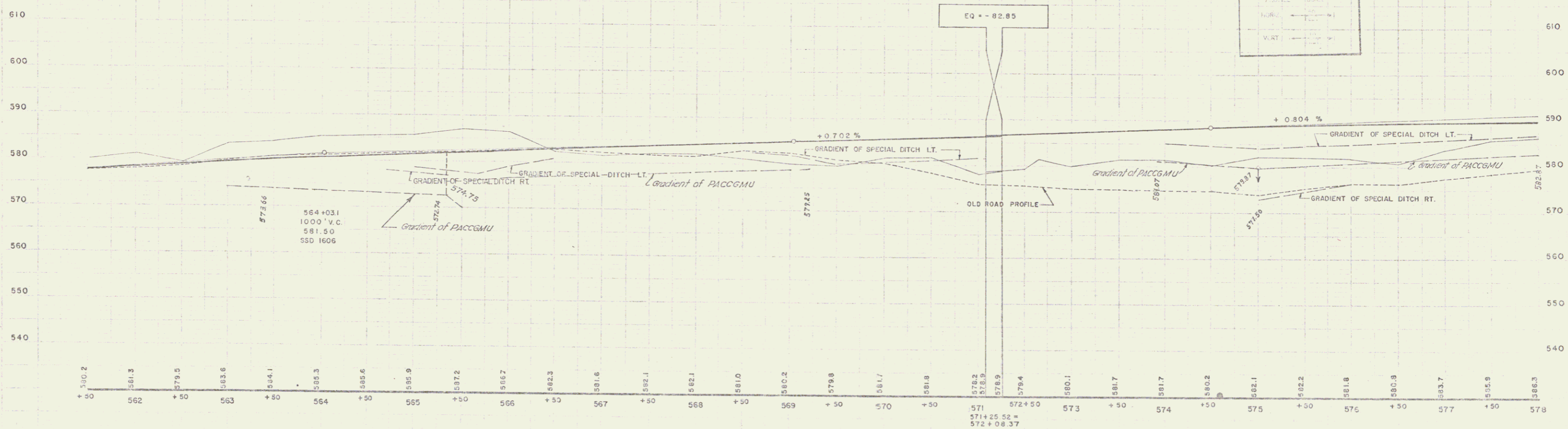
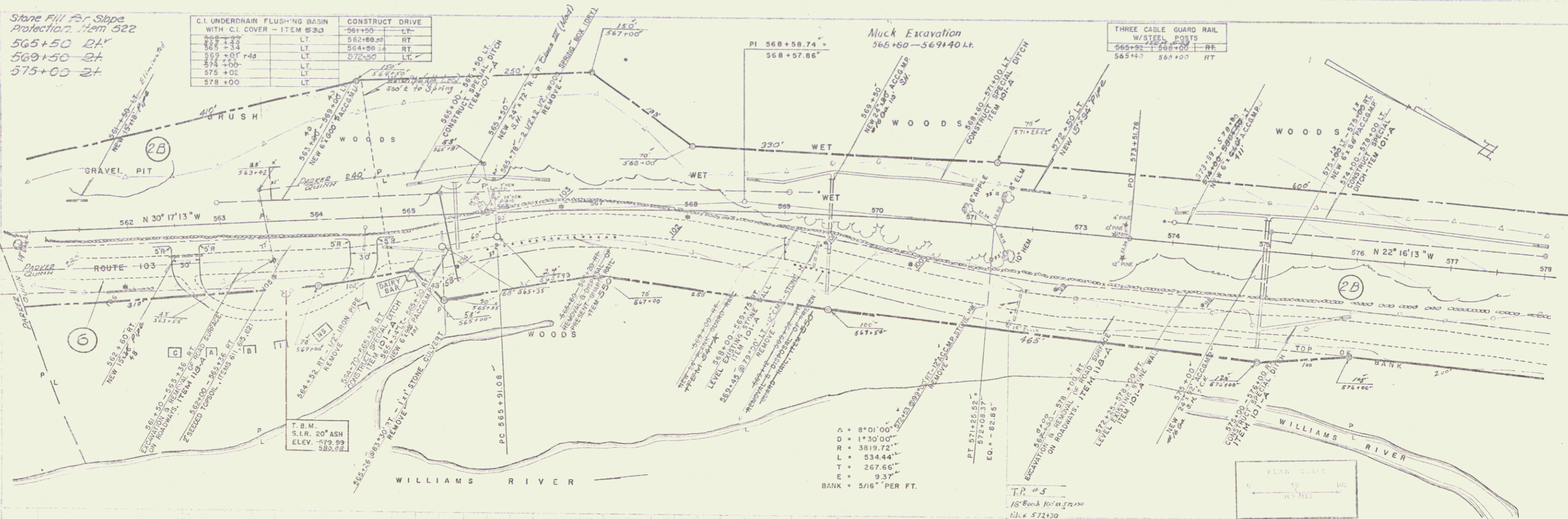
TBM 65' LT. 551+96 RR SPIKE 24" MAPLE ELEV. 562.07

Stone Fill for Slope Protection Item 522
 565+50 DA
 569+50 DA
 575+00 DA

C.I. UNDERDRAIN FLUSHING BASIN WITH C.I. COVER - ITEM 530		CONSTRUCT DRIVE	
565+20	LT	562+00	RT
565+34	LT	564+50	RT
569+01	LT	572+50	LT
574+00	LT		
575+00	LT		
578+00	LT		

Muck Excavation 565+50-569+40 LT

THREE CABLE GUARD RAIL W/STEEL POSTS
 565+92 - 568+00 RT
 565+40 - 568+00 RT



T.B.M. 79' RT. 563+65 S.I.R. 20' ASH ELEV. 579.99

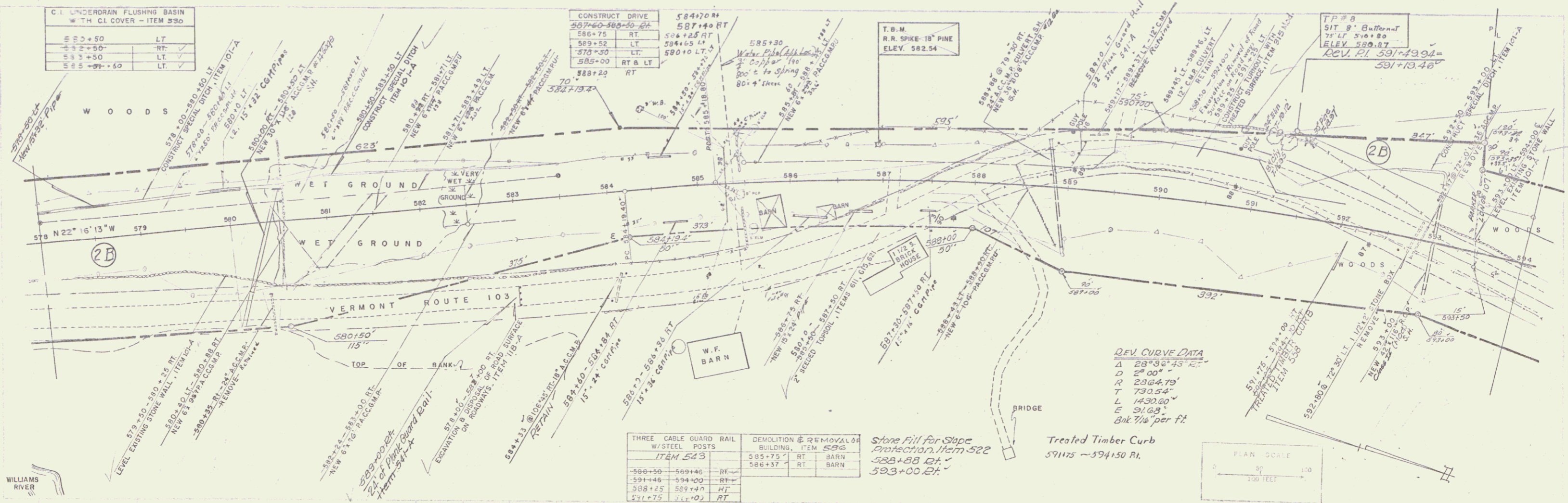
CHESTER PROJECT No. 025-1(15)
 SHEET 12 OF 73

C.I. UNDERDRAIN FLUSHING BASIN W TH. CL COVER - ITEM 530	
582+50	LT
583+50	RT
584+50	LT
585+50	LT

CONSTRUCT DRIVE 584470 R	
587+60-588+50	RT
588+75	RT
589+52	LT
589+50	LT
585+00	RT & LT
588+20	RT

T.B.M.
R.R. SPIKE-18" PINE
ELEV. 582.54

F.P.# 8
SIT. 8' Buffer at
75' LT 580+80
ELEV. 580.87
REV. P.I. 591+13.48

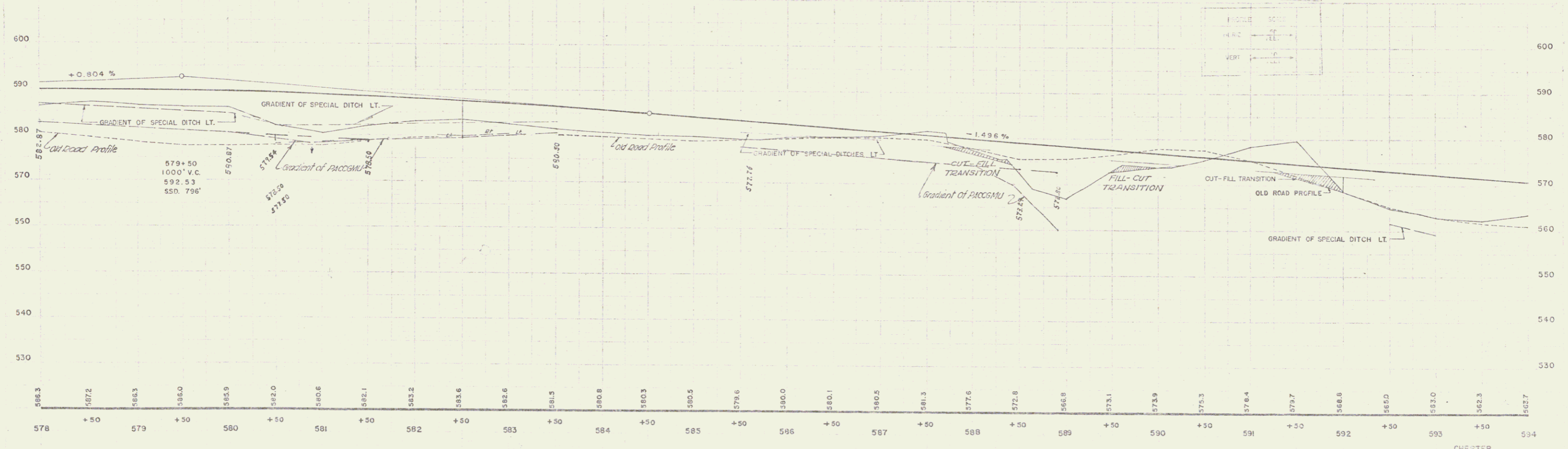
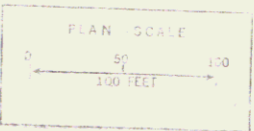


DEV. CURVE DATA
 Δ 28°35'45" RT
 D 2°00'
 R 2364.79'
 T 730.54'
 L 1430.80'
 E 31.68'
 Ank 1/8" per ft.

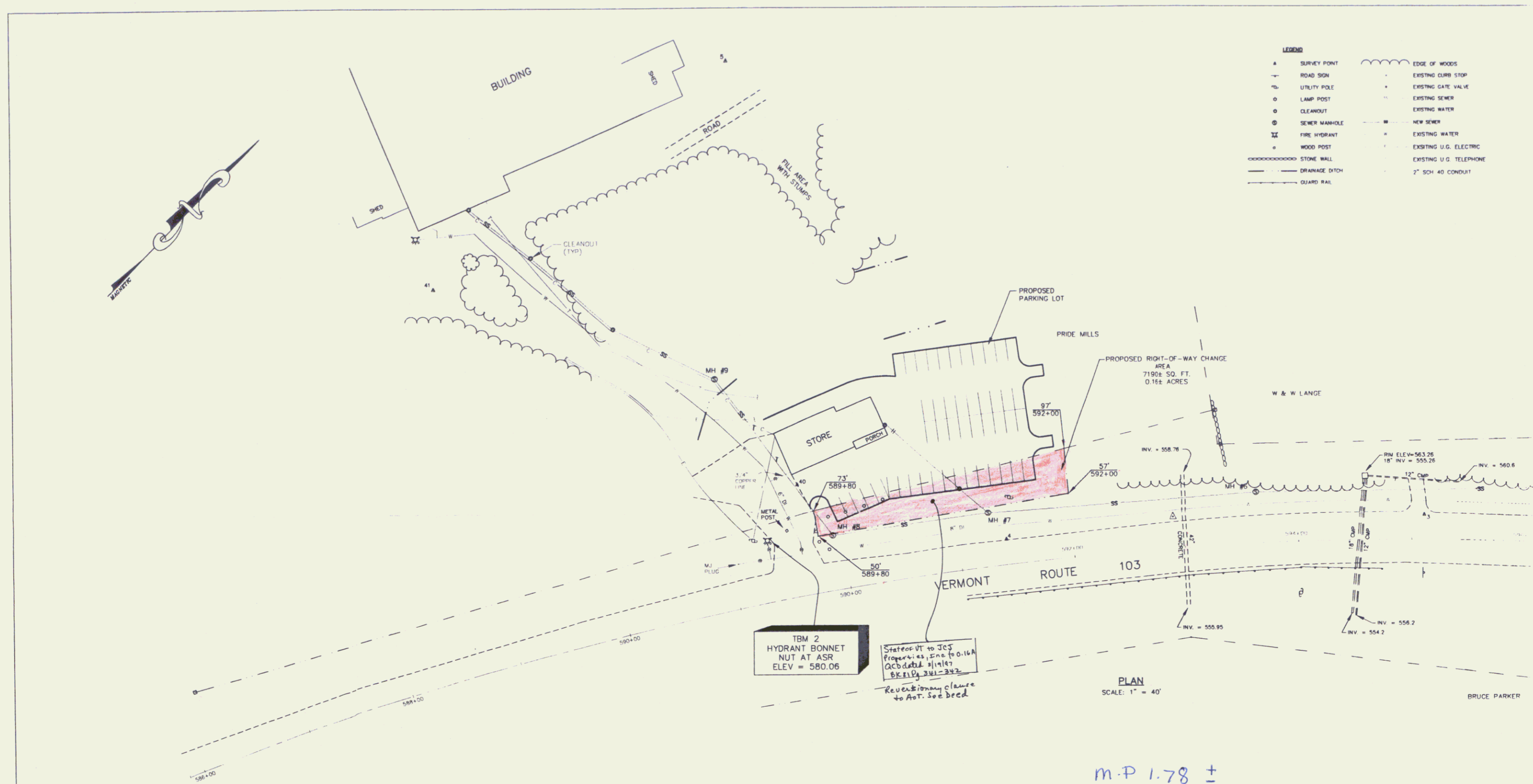
THREE CABLE GUARD RAIL W/STEEL POSTS ITEM 543		DEMOLITION & REMOVAL OF BUILDING, ITEM 526	
590+50	RT	589+75	RT BARN
591+46	RT	586+37	RT BARN
588+25	RT		
581+75	LT		

Stone Fill for Slope
Protection, Item 522
583+88 RT
593+00 RT

Treated Timber Curb
591+75 - 594+50 RT.



T.B.M. 10' LT 586+96 R.R. SPIKE 18" PINE ELEV. 582.54



LEGEND

▲	SURVEY POINT	~~~~~	EDGE OF WOODS
—	ROAD SIGN	—	EXISTING CURB STOP
⊕	UTILITY POLE	+	EXISTING GATE VALVE
○	LAMP POST	—	EXISTING SEWER
○	CLEANOUT	—	EXISTING WATER
⊙	SEWER MANHOLE	—	NEW SEWER
⊕	FIRE HYDRANT	—	EXISTING WATER
⊕	WOOD POST	—	EXISTING U.G. ELECTRIC
⊕	STONE WALL	—	EXISTING U.G. TELEPHONE
—	STONE WALL	—	2" SCH 40 CONDUIT
—	DRAINAGE DITCH		
—	GUARD RAIL		

TBM 2
HYDRANT BONNET
NUT AT ASR
ELEV = 580.06

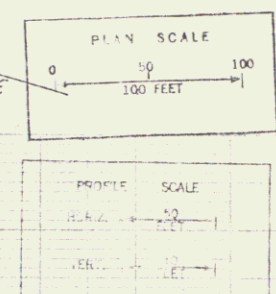
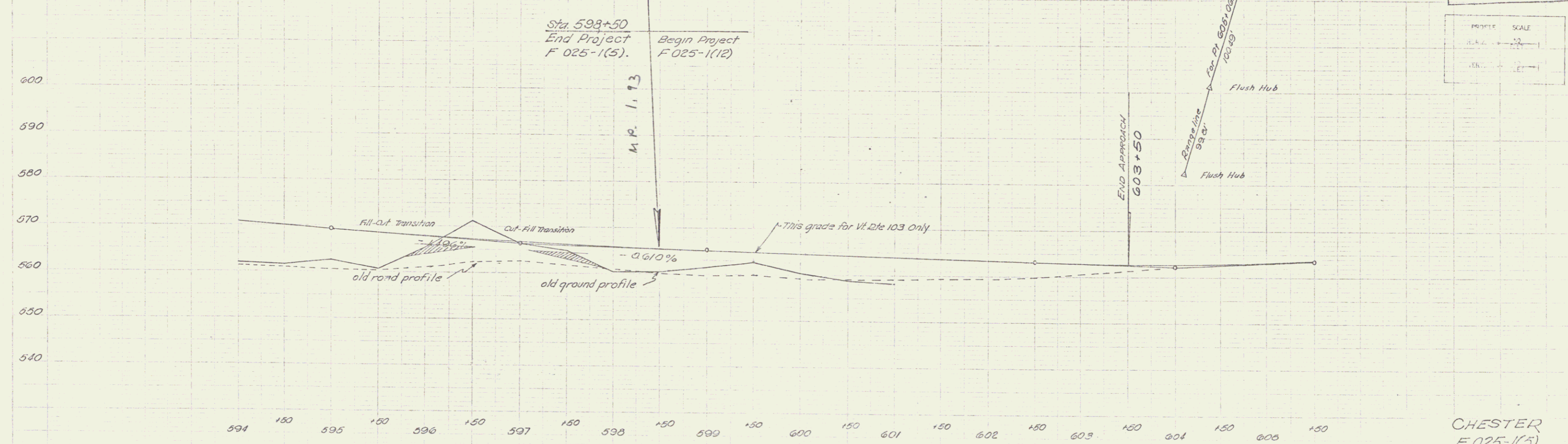
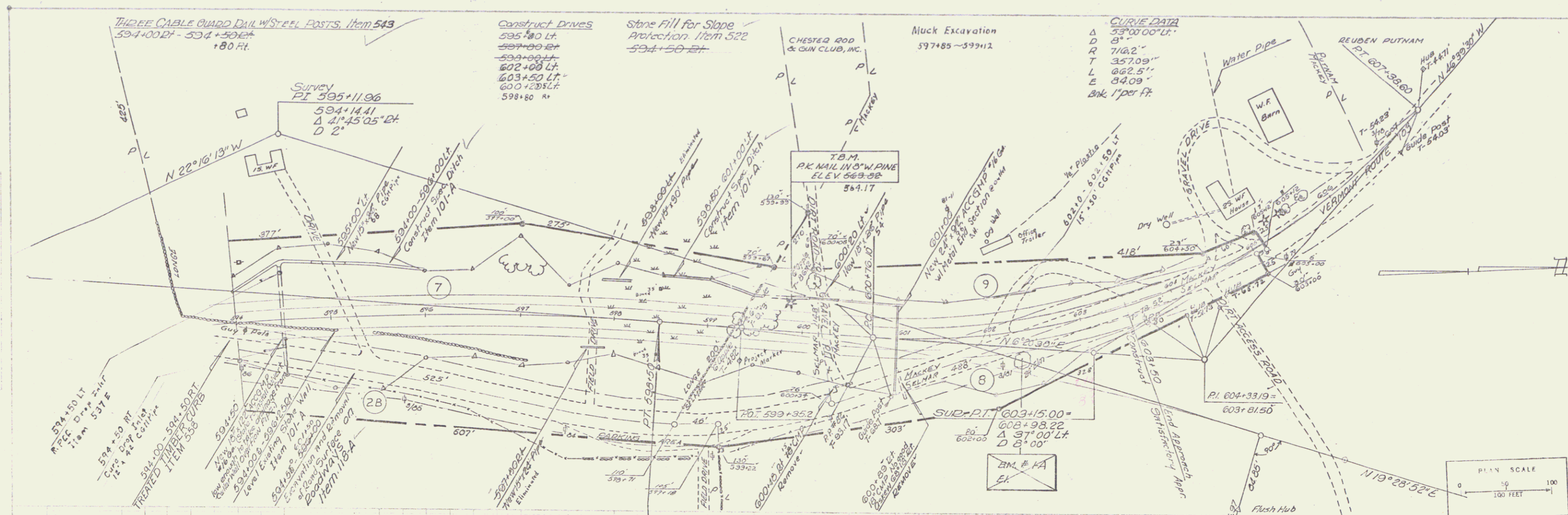
Stationed VT to JCS
Property as shown to 0.16±
Acres by 1/14/97
BK 110, 341-342
Revisions clause
to Art. 5 of deed

PLAN
SCALE: 1" = 40'

M.P. 1.78 ±

RIGHT-OF-WAY DIVISION
TOWN FILE
PERPETUAL
Town of Chester VT 103
(To Be returned To R.O.W. Division)

BRUNO ASSOCIATES INC. P.C. ENGINEERS, PLANNERS, SURVEYORS WOODSTOCK, VERMONT			
© 1996 BRUNO ASSOCIATES INC. P.C.	TITLE PROPOSED RIGHT-OF-WAY SITE PLAN FOR PUTNEY PASTA IN CHESTER, VERMONT		SHEET 13B
SCALE: AS SHOWN	DATE: 8/2/96	SURVEYED: JMB, FM DRAWN: KH	DESIGNED: CHECKED: ESC
DRAWING NO. PUTNEY\PUT-ROW			REVISIONS: 7 E-202796



CHESTER
F 025-1(5).
Sheet 12 of 73