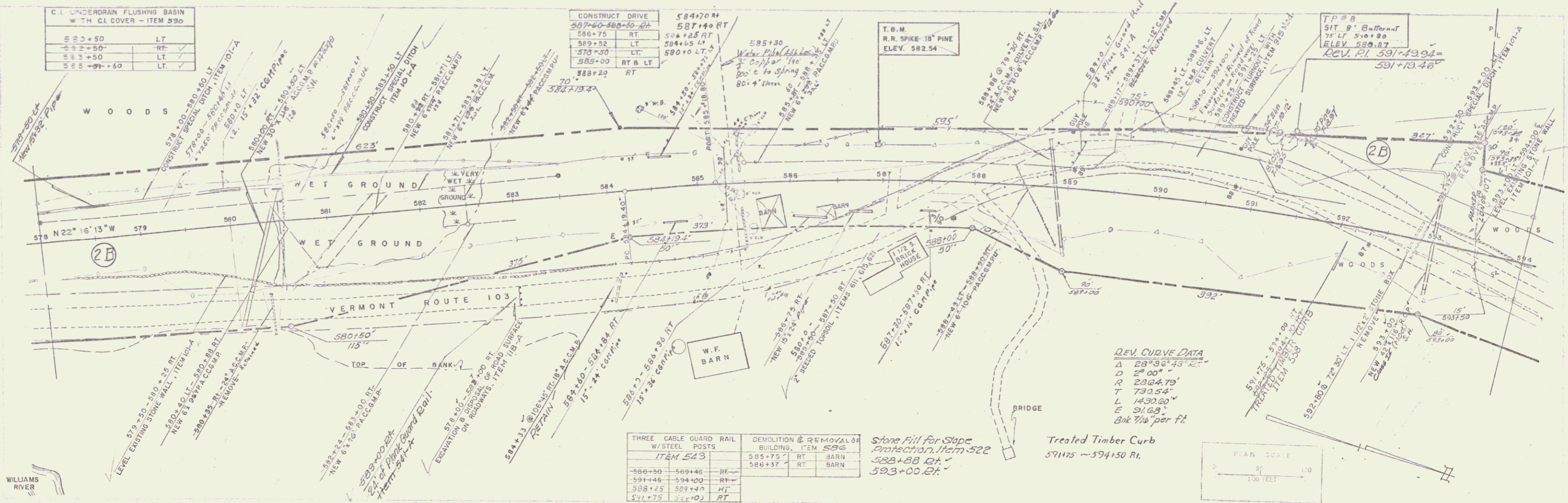


C.I. UNDERDRAIN FLUSHING BASIN W TH. CL COVER - ITEM 530	
582+50	LT
583+50	RT
584+50	LT
585+50	LT

CONSTRUCT DRIVE 584470 R	
587+60-588+50	RT
588+75	RT
589+52	LT
589+50	LT
585+00	RT & LT
588+20	RT

T.B.M.
R.R. SPIKE-18" PINE
ELEV. 582.54

F.P.# 8
SIT. 8' Buffer at
75' LT 590+80
ELEV. 580.87
REV. P.I. 591+13.48

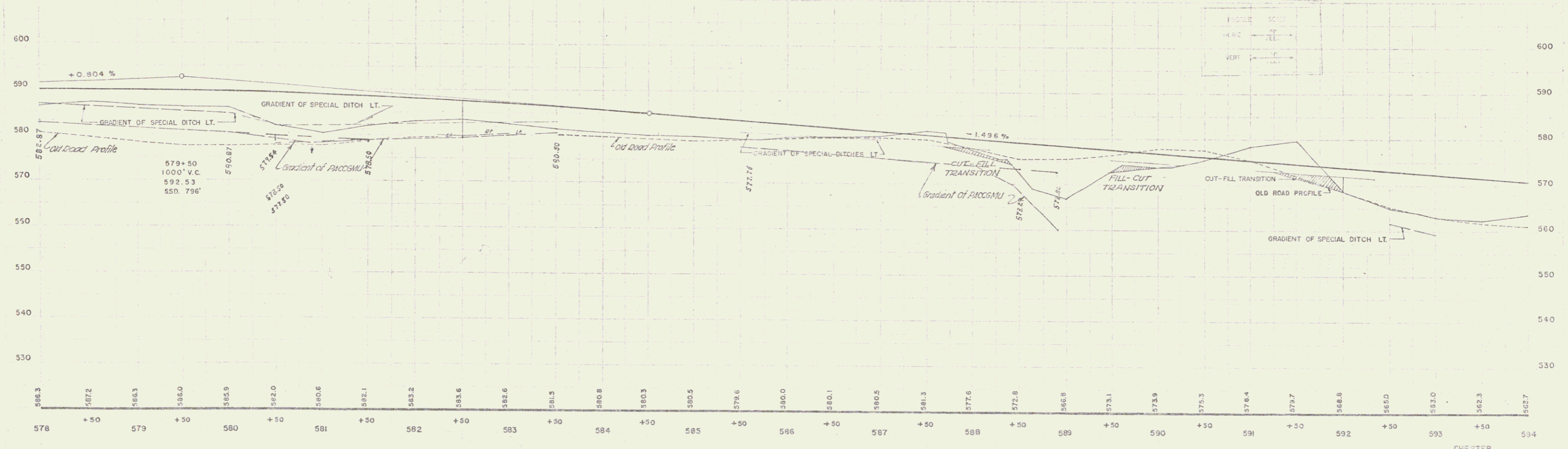
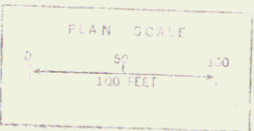


DEV. CURVE DATA
 Δ 28°36'45" RT
 D 2°00'
 R 2364.79'
 T 730.54'
 L 1430.80'
 E 31.68'
 Ank 1/8" per ft.

THREE CABLE GUARD RAIL W/STEEL POSTS ITEM 543		DEMOLITION & REMOVAL OF BUILDING, ITEM 526	
590+50	RT	589+75	RT BARN
591+46	RT	586+37	RT BARN
588+25	RT		
581+75	RT		

Stone Fill for Slope
Protection, Item 522
583+88 RT
593+00 RT

Treated Timber Curb
591+75 - 594+50 RT



T.B.M. 10' LT 586+96 R.R. SPIKE 18" PINE ELEV. 582.54

CHESTER
PROJECT F No. 025-1151
SHEET 13 of 73

5