

INDEX OF SHEETS	
SHEET NO.	TITLE PAGE
1	TYPICAL CROSS-SECTIONS OF IMPROVEMENT
2	QUANTITY SHEET (ITEMS)
3	QUANTITY SHEET (DRAINAGE)
4	EARTHWORK SHEETS
5	PLAN AND PROFILE SHEETS
21	DETAILS OF 12" x 12" CORR. GALV. METAL PLATE PIPE @ 445475
27	DETAILS OF 6" x 6" CORR. GALV. METAL PLATE PIPE @ 512440
37	DETAILS OF REIN. CONC. BOX CULVERT @ 214+24 (SUB-AREA ON SHEET 25 OF 214)
38	A-C DRILLING AND BLASTING OF SOLID ROCK SUBGRADE, MOD.
39	B-1 BANKING TABLES
40	B-5 TYPICAL SLOPE GRADING
41	B-6 MUCK EXCAVATION
42	C-1 CURBS
43	D-1 PRECAST REINFORCED CONCRETE PIPE DROP IN'FF WITH COVER
44	D-2 CEMENT RUBBLE MASONRY
45	D-3 TREATED GUTTERS
46	D-4 FLUSHING BASIN
47	D-12 TOPS FOR ASPH. CTD. CORR. GALV. PIPE DROP INLETS
48	E-1 BARRICADES, SIGNS, AND LIGHTS
49	E-2 CONSTRUCTION IDENTIFICATION SIGNS
50	G-3 THREE CABLE GUARD RAIL WITH STEEL POSTS
50A	G-4 STEEL MARKER POSTS
50B	J-1 PROJECT MARKERS
74	CROSS SECTIONS-MAINLINE
75	"
79	"
81	"
82	"
83	"
84	"
87	"
88	"
89	"
97	"
98	"
99	"
199	"
199C	"
204	"
207	"
208	"
212	"

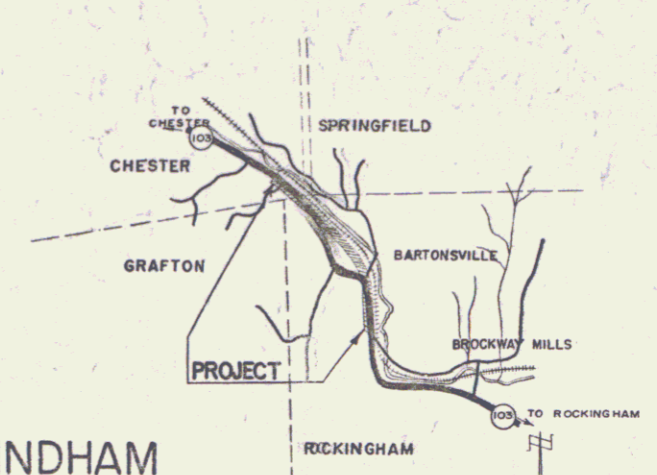
**STATE OF VERMONT  
DEPARTMENT OF HIGHWAYS  
PROPOSED IMPROVEMENT**

FEDERAL AID PROJECT

**TOWN OF ROCKINGHAM-COUNTY OF WINDHAM**

**TOWN OF CHESTER-COUNTY OF WINDSOR**

**VERMONT ROUTE 103  
BELLOWS FALLS-CHESTER ROAD**

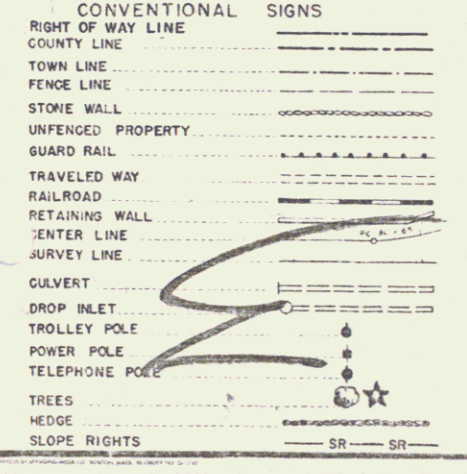
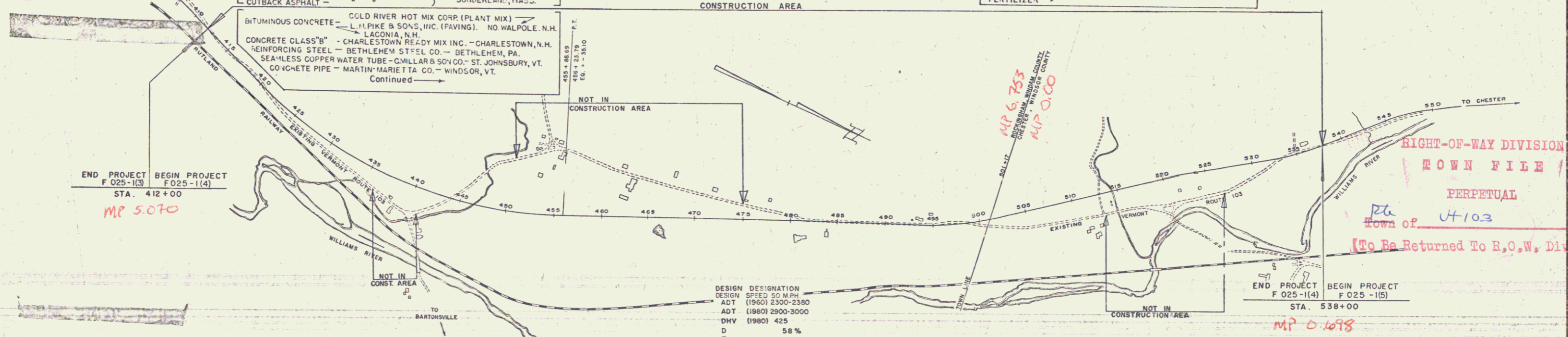


REGION	STATE	PROJECT NO.	SHEET NO.	TOTAL SHEETS
VT	VT	F 025-104	214	214

PROJECT NAME	PROJECT NO.
ROCKINGHAM-CHESTER	F-025-104
TYPE	PAVEMENT AREA
BIT. CONC.	30,300 SQ. YD.

ACCGMP	NORTHEASTERN METAL CULVERT CO. INC.
COMP	WESTMINSTER, VERMONT
3 CABLE GUARD RAIL	WESTMINSTER, VERMONT
STEEL MARKER POSTS	MAINLINE FENECO.
BOUNDARY MARKERS	WESTBROOK, MAINE
GRASS SEED	WIRTHMORE STORES
RYE SEED	CHESTER & BELLOWS FALLS, VT.
FERTILIZER	CHESTER & BELLOWS FALLS, VT.

CONTRACTOR - CALEDONIA SAND & GRAVEL CO. INC.  
ST. JOHNSBURY, VT.  
RESIDENT ENGINEER - R. W. BUTLER  
INSPECTOR - M. F. SANDERSON  
RECORD PLANS - R. W. BUTLER  
CONTRACT: DATED - OCTOBER 10, 1961  
STARTED - OCTOBER 12, 1961  
COMPLETED - OCTOBER 16, 1962  
ACCEPTED - OCTOBER 16, 1962



GROUND ELEVATION	DATUM	LINE
DATE	DATE	DATE

SCALE	TITLE
1" = 800'	TITLE
1" = 2.67'	TYPICAL PLAN
1" = 50'	PROFILE HORIZONTAL
1" = 10'	PROFILE VERTICAL
1" = 5'	CROSS-SECTIONS

BEGINNING AT A POINT APPROXIMATELY 5.09 MI. NORTHWEST OF THE INTERSECTION OF U.S. ROUTE 5 AND VERMONT ROUTE 103 AND EXTENDING NORTHWESTERLY 2.380 MILES

LENGTH OF PROJECT IN TOWN OF ROCKINGHAM 8884.90 FEET = 1.683 MILES

LENGTH OF PROJECT IN TOWN OF CHESTER 3680.00 FEET = 0.697 MILES

TOTAL LENGTH OF PROJECT 12564.90 FEET = 2.380 MILES

THESE PLANS ARE SUBJECT TO SUCH REVISIONS AS MAY BE REQUIRED BY THE BUREAU OF PUBLIC ROADS OR THE COMMISSIONER OF HIGHWAYS.

CONSTRUCTION IS TO BE CARRIED ON IN ACCORDANCE WITH THE PLANS AND THE STANDARD SPECIFICATIONS FOR HIGHWAY AND BRIDGE CONSTRUCTION OF JANUARY 1956 SUBMITTED TO THE BUREAU OF PUBLIC ROADS AS APPROVED JULY 5, 1956, INCLUDING ALL SUBSEQUENT APPROVED REVISIONS AND SUCH REVISED SPECIFICATIONS AND SPECIAL PROVISIONS AS ARE SUBMITTED WITH THE PLANS.

APPROVED	APPROVED	APPROVED	APPROVED	APPROVED	APPROVED
SECONDARY ENGINEER	DATE 9/25/59	DATE 10/6/1959	DATE 1-19-59	DATE 10/6/1959	DATE 9/25/59

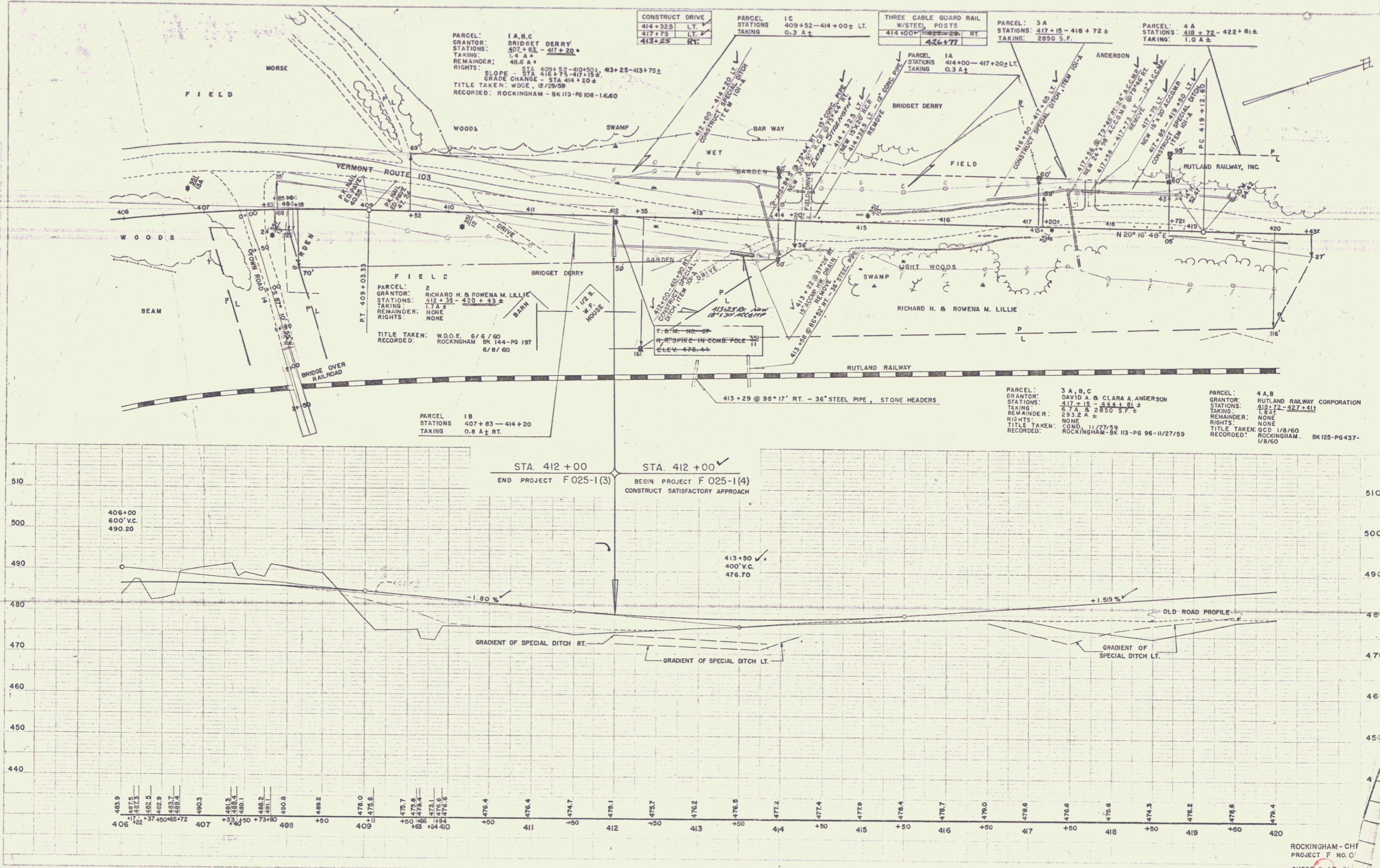
NOTE: ANY REVISIONS CONCERNING FINAL QUANTITIES AND COSTS MUST BE MADE RELATIVE TO THE ORIGINAL PLAN AND SPECIFICATIONS AND MUST BE SUBMITTED TO THE BUREAU OF PUBLIC ROADS.

DEPARTMENT OF COMMERCE  
BUREAU OF PUBLIC ROADS  
Pin # ODR147

PROJECT F NO 025-104  
SHEET 1 OF 214 SHEETS

GORDON E. ANSWORTH & ASSOCIATES  
REGISTERED PROFESSIONAL ENGINEERS  
AND LANDSCAPE ARCHITECTS

GORDON E. ANSWORTH & ASSOCIATES  
REGISTERED PROFESSIONAL ENGINEERS  
AND LANDSCAPE ARCHITECTS

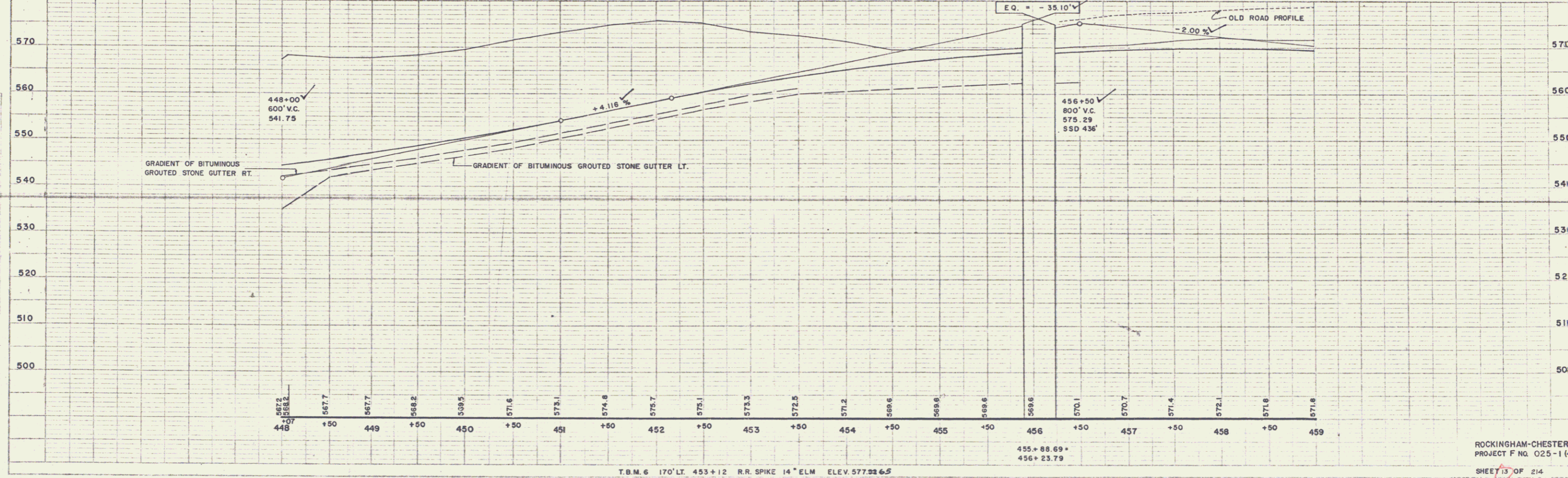
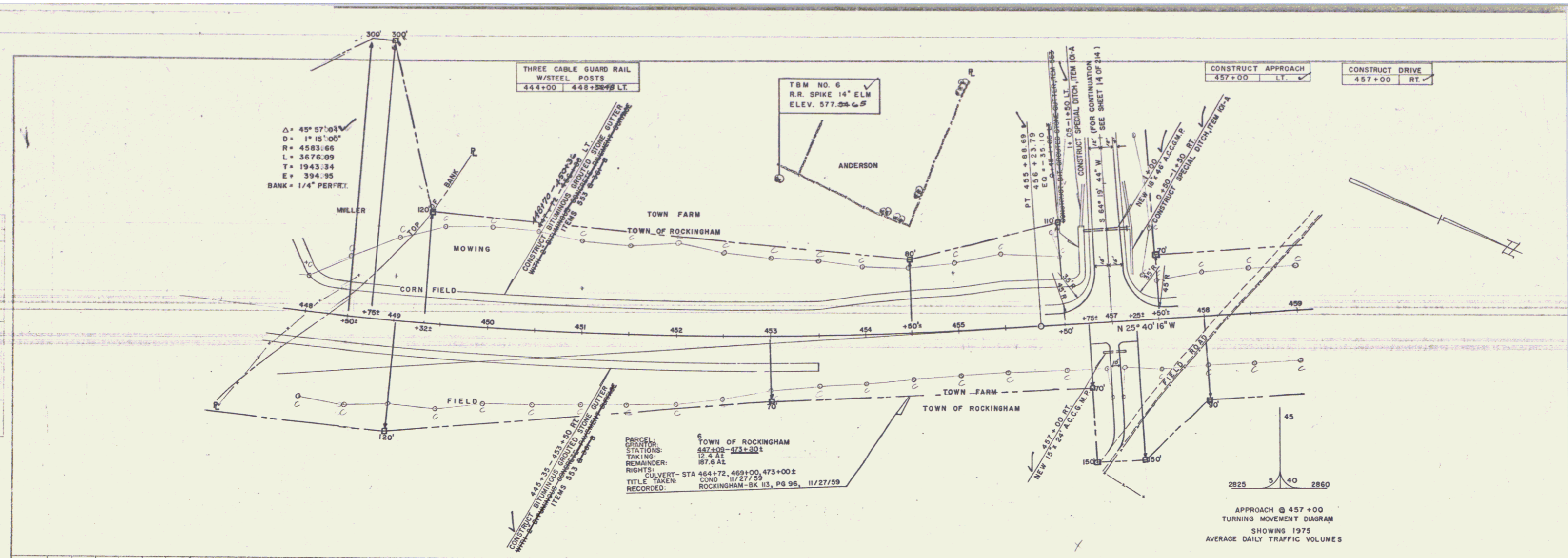






PLAN  
 GORDON E. ANSWORTH & ASSOCIATES  
 REGISTERED ENGINEERS, SURVEYORS  
 AND LANDSCAPE ARCHITECTS  
 1975 NORTH 2005 WEST  
 NO. 1000

PROFILE  
 GORDON E. ANSWORTH & ASSOCIATES  
 REGISTERED ENGINEERS, SURVEYORS  
 AND LANDSCAPE ARCHITECTS  
 1975 NORTH 2005 WEST  
 NO. 1000



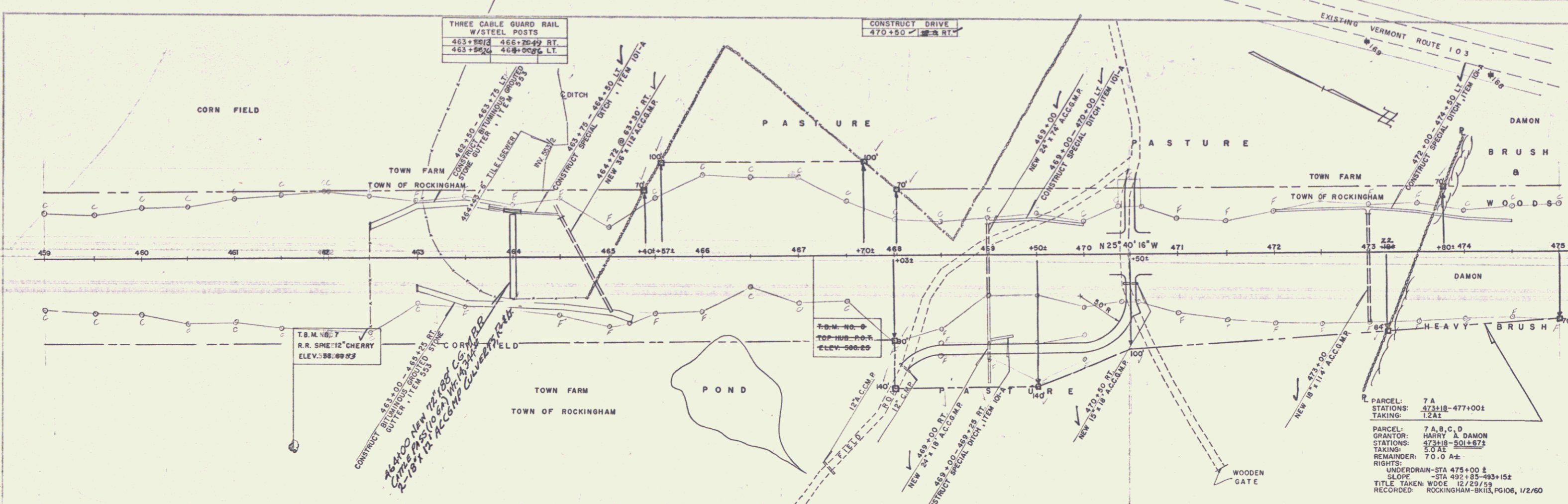
T.B.M. 6 170' LT. 453+12 R.R. SPIKE 14" ELM ELEV. 577.22 ± 6.5

455+88.69 ±  
 456+23.79

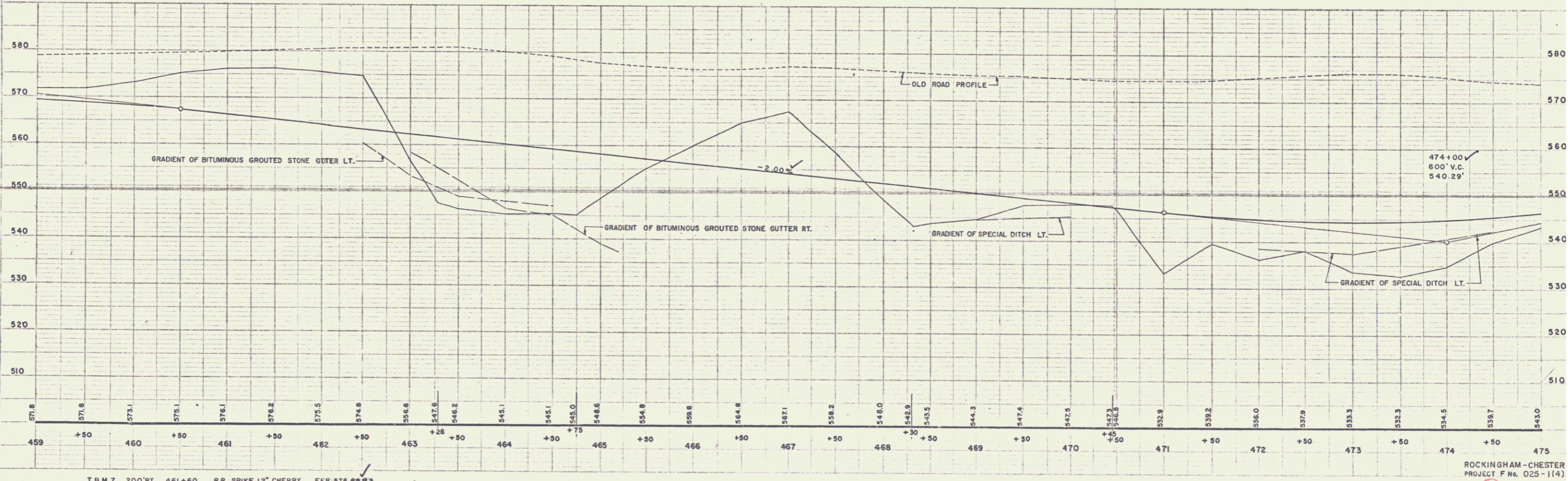
ROCKINGHAM-CHESTER  
 PROJECT F NO. 025-1 (4)  
 SHEET 13 OF 214  
 GORDON E. ANSWORTH & ASSOC.  
 REGISTERED ENGINEERS, SURVEYORS  
 AND LANDSCAPE ARCHITECTS



PLAN  
 GORDON E. ANSWORTH & ASSOCIATES  
 REGISTERED ENGINEERS, SURVEYORS  
 AND LANDSCAPE ARCHITECTS  
 125 WEST 10TH STREET  
 WASHINGTON, D.C. 20004  
 1971



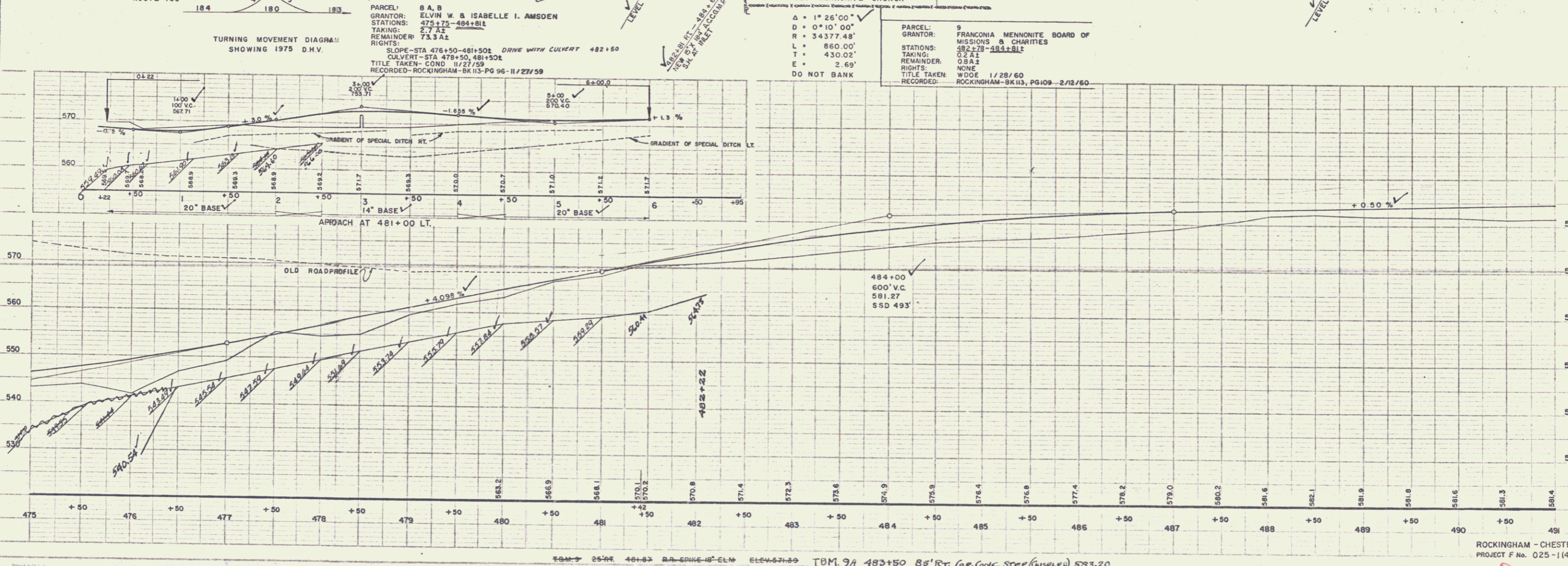
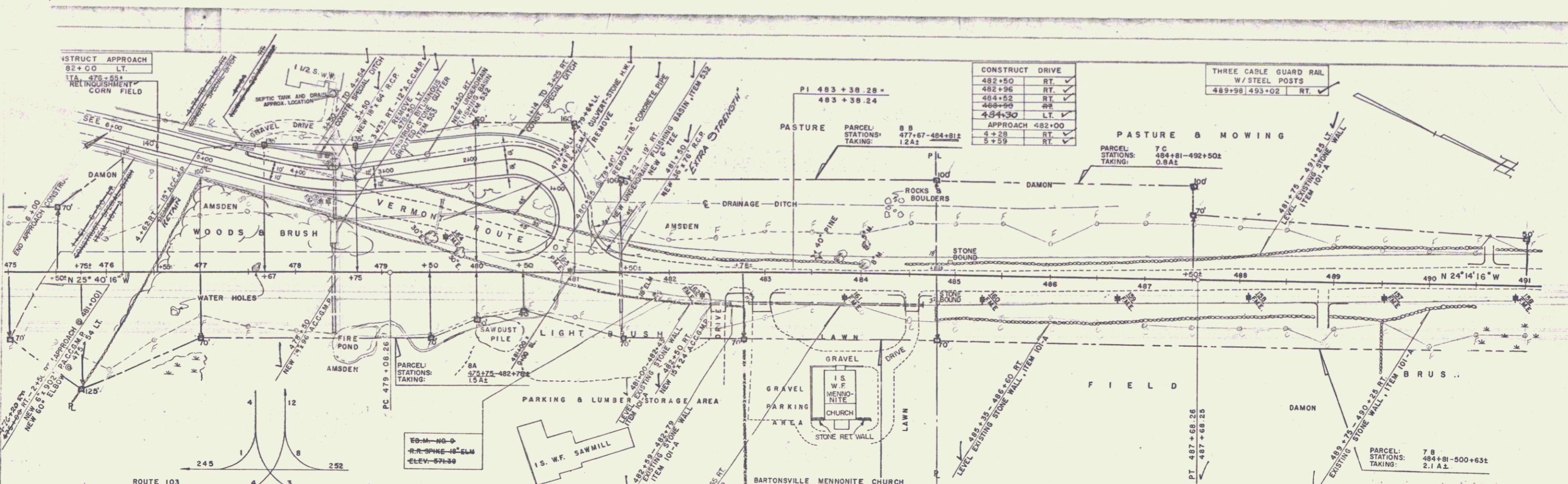
PROFILE  
 GORDON E. ANSWORTH & ASSOCIATES  
 REGISTERED ENGINEERS, SURVEYORS  
 AND LANDSCAPE ARCHITECTS  
 125 WEST 10TH STREET  
 WASHINGTON, D.C. 20004  
 1971



ROCKINGHAM-CHESTER  
 PROJECT F No. 025-1(4)  
 SHEET 15 OF 214  
 GORDON E. ANSWORTH & ASSOCIATES  
 REGISTERED ENGINEERS, SURVEYORS  
 AND LANDSCAPE ARCHITECTS  
 1971

GORDON E. ANSWORTH & ASSOCIATES  
 ARCHITECTS AND LANDSCAPE ARCHITECTS  
 100 N. 10th St., Raleigh, N.C. 27601  
 TEL: 336-785-1111

FIGURE 1  
 GORDON E. ANSWORTH & ASSOCIATES  
 ARCHITECTS AND LANDSCAPE ARCHITECTS  
 100 N. 10th St., Raleigh, N.C. 27601  
 TEL: 336-785-1111



CONSTRUCT DRIVE	
482+50	RT ✓
482+96	RT ✓
484+52	RT ✓
486+90	RT ✓
484+30	LT ✓
APPROACH 482+00	
4+28	RT ✓
5+59	RT ✓

THREE CABLE GUARD RAIL W/ STEEL POSTS	
489+98	493+02 RT ✓

PARCEL 8 A, B  
 GRANTOR: ELVIN W & ISABELLE I. AMSDEN  
 STATIONS: 475+75-494+81E  
 TAKING: 2.7 A.Z.  
 REMAINDER: 73.3 A.Z.  
 RIGHTS: NONE  
 TITLE TAKEN: COND 11/27/59  
 RECORDED: ROCKINGHAM - BK113-PG 96-11/27/59

PARCEL 7 C  
 GRANTOR: FRANCONIA MENNONITE BOARD OF MISSIONS & CHARITIES  
 STATIONS: 482+78-484+81E  
 TAKING: 0.2 A.Z.  
 REMAINDER: 0.8 A.Z.  
 RIGHTS: NONE  
 TITLE TAKEN: WOOD 1/28/60  
 RECORDED: ROCKINGHAM - BK113, PG109-2/12/60

ROCKINGHAM - CHESTER  
 PROJECT F No. 025-1(4)

SHEET 16 OF 214  
 GORDON E. ANSWORTH & ASSOCIATES  
 ARCHITECTS AND LANDSCAPE ARCHITECTS  
 100 N. 10th St., Raleigh, N.C. 27601  
 TEL: 336-785-1111





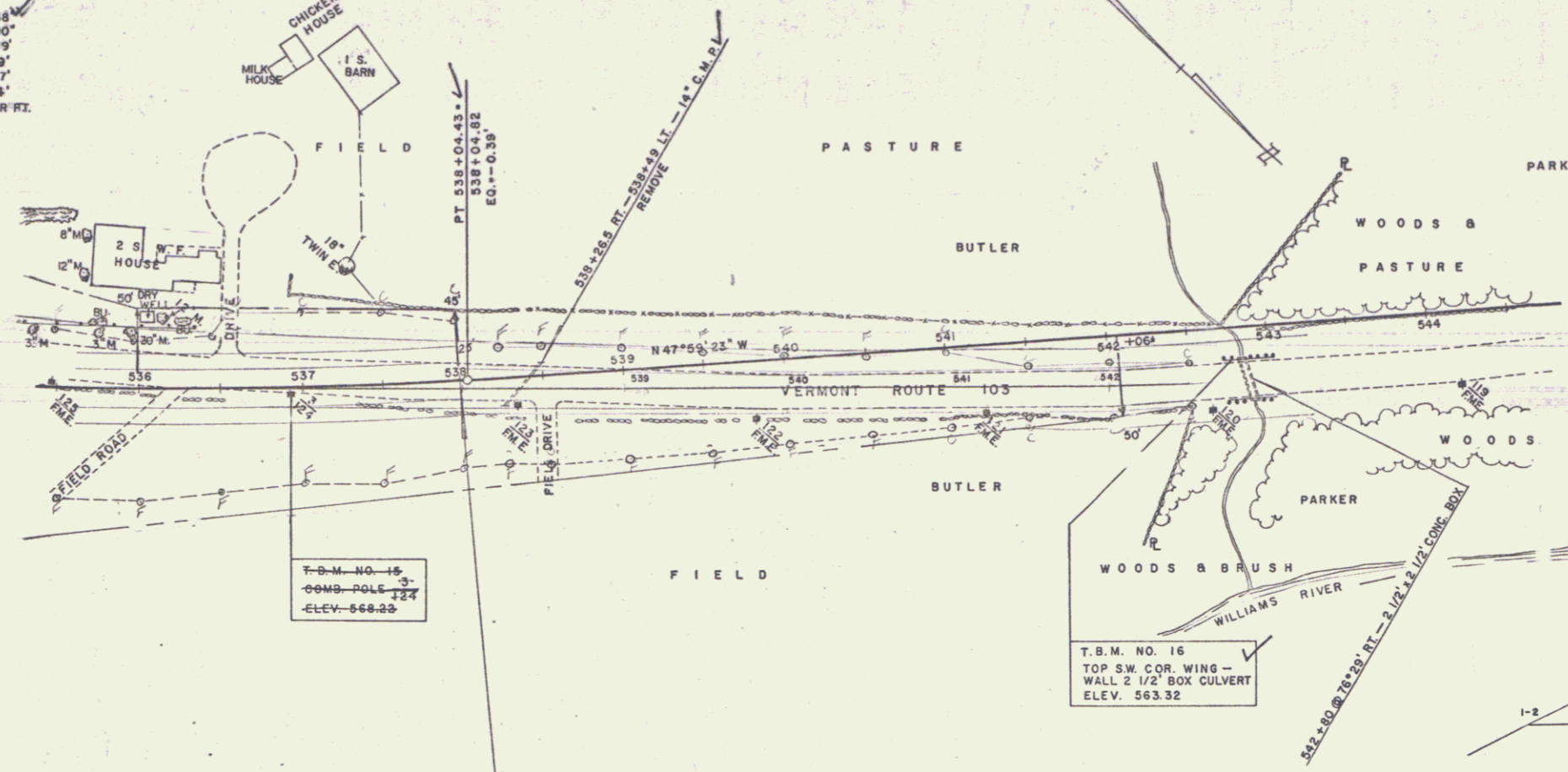


GORDON E. ANSICORR & ASSOCIATES  
REGISTERED ENGINEERS AND ARCHITECTS

GORDON E. ANSICORR & ASSOCIATES  
REGISTERED ENGINEERS AND ARCHITECTS

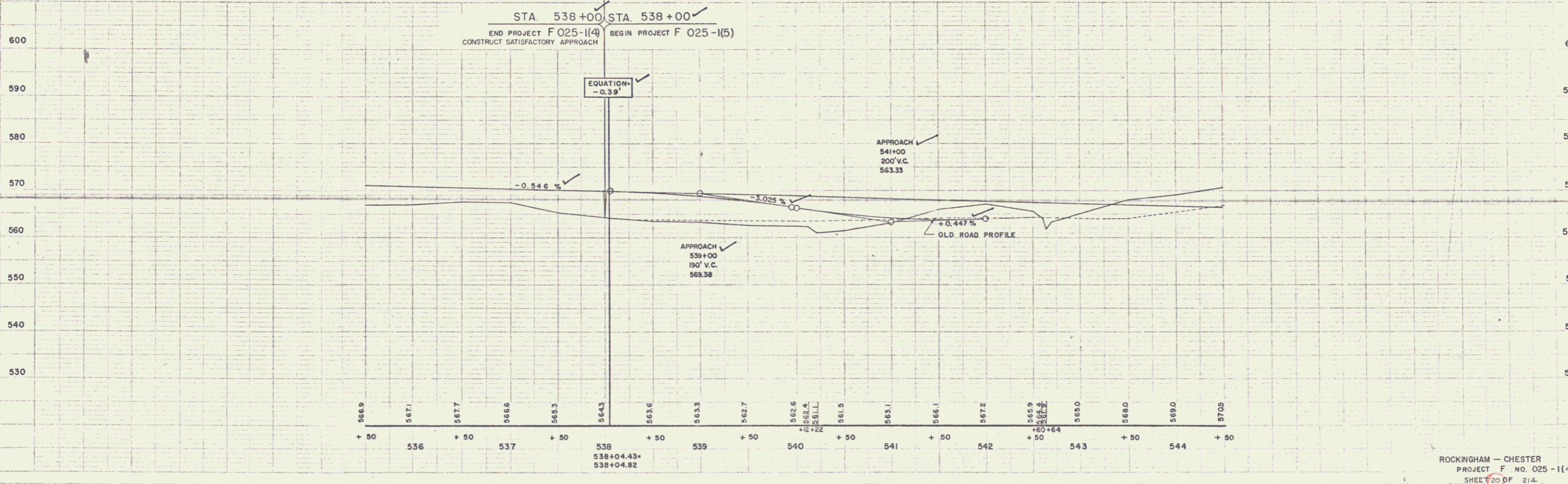
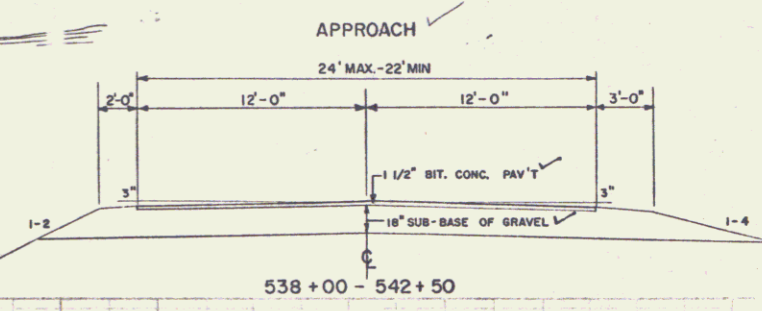
$\Delta = 12^{\circ}14'38''$   
 $D = 2^{\circ}00'00''$   
 $R = 2864.79'$   
 $L = 612.19'$   
 $T = 307.27'$   
 $E = 16.14'$   
 $BANK = 7/16" PER FT.$

CONSTRUCT DRIVE  
 536+55 LT  
 541+50 RT



T.B.M. NO. 16  
 COMB. POLE  
 ELEV. 568.23

T.B.M. NO. 16  
 TOP S.W. COR. WING -  
 WALL 2 1/2" BOX CULVERT  
 ELEV. 563.32



ROCKINGHAM - CHESTER  
 PROJECT F NO. 025-1(4)  
 SHEET NO. DF 214  
 GORDON E. ANSICORR & ASSOCIATES  
 REGISTERED ENGINEERS AND ARCHITECTS