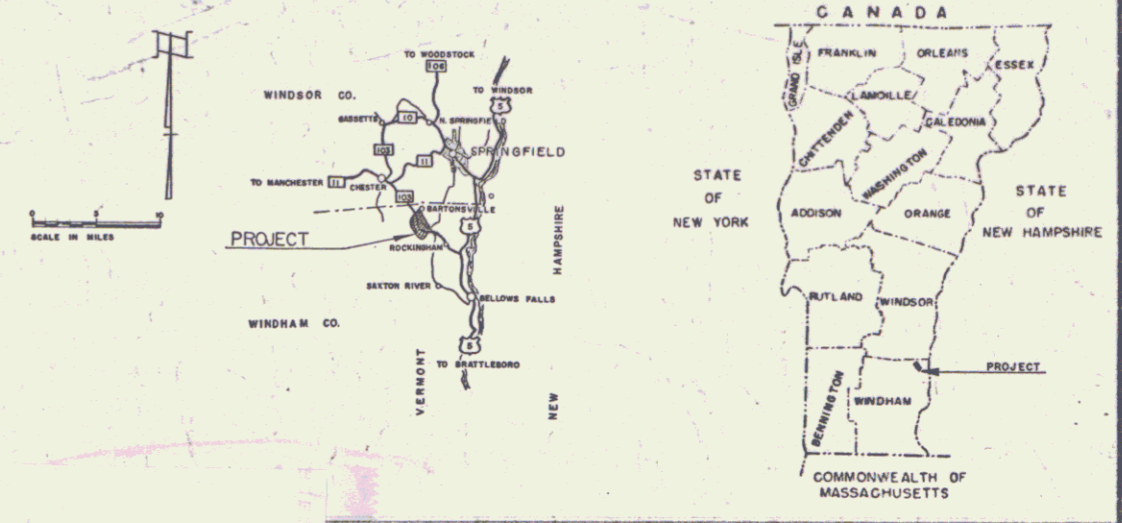


INDEX OF SHEETS

- SHEET NO. 1 TITLE PAGE
- 2 TYPICAL CROSS SECTION OF IMPROVEMENT, 3" BITUMINOUS CONCRETE PAVEMENT ITEM 261.9, MOD.
- 3 QUANTITY SHEET (ITEMS)
- 4 QUANTITY SHEET (DRAINAGE)
- 5-7 EARTHWORK SHEET
- 8-17 PLAN AND PROFILE SHEETS
- 18 STANDARD SHEET SB-PP #1 ROUND PLATE PIPE
- 19 STANDARD SHEET SB-PP #2 ROUND PLATE PIPE
- 20 STANDARD SHEET A-61 (DRILLING AND BLASTING OF SOLID ROCK SUB-GRADE)
- 21 STANDARD SHEET B-1 (BANKING TABLES)
- 22 STANDARD SHEET B-5 (TYPICAL SLOPE GRADING)
- 23 STANDARD SHEET B-6 (MUCK EXCAVATION)
- 24 STANDARD SHEET D-2 (DRAINAGE)
- 25 STANDARD SHEET D-3 (GUTTERS)
- 26 STANDARD SHEET D-4 (FLUSHING BASINS)
- 27 STANDARD SHEET D-8 (REIN. CONC. DROP INLET)
- 27-A STANDARD SHEET E-9 CONSTRUCTION IDENTIFICATION SIGNS
- 28 STANDARD SHEET E-1 (BARRICADES, SIGNS AND LIGHTS)
- 29 STANDARD SHEET G-3 (THREE CABLE GUARD RAIL WITH STEEL POSTS)
- 30 STANDARD SHEET G-4 (STEEL MARKER POSTS AND PLANK GUARD RAIL)
- 31 STANDARD SHEET J-1 (PROJECT AND BOUNDARY MARKERS)
- 32-86 CROSS SECTIONS
- 87-90 CHANNEL SECTIONS

STATE OF VERMONT
DEPARTMENT OF HIGHWAYS
PROPOSED IMPROVEMENT
FEDERAL PROJECT
TOWN OF ROCKINGHAM
COUNTY OF WINDHAM
VERMONT ROUTE 103
BELLOWS FALLS-CHESTER ROAD

| FED. ROAD DISTRICT | STATE | PROJECT NO. | SHEET NO. | TOTAL SHEETS |
|--------------------|-------|-------------|-----------|--------------|
| 1 | VT | F 025-1(3) | 1 | 90 |



| PROJECT NAME & NUMBER | TYPE | PAVEMENT | AREA |
|-----------------------|---------------------|-------------|------|
| ROCKINGHAM F 025-1(3) | BITUMINOUS CONCRETE | 28,681 S.Y. | |

RECORD PLANS MATERIALS

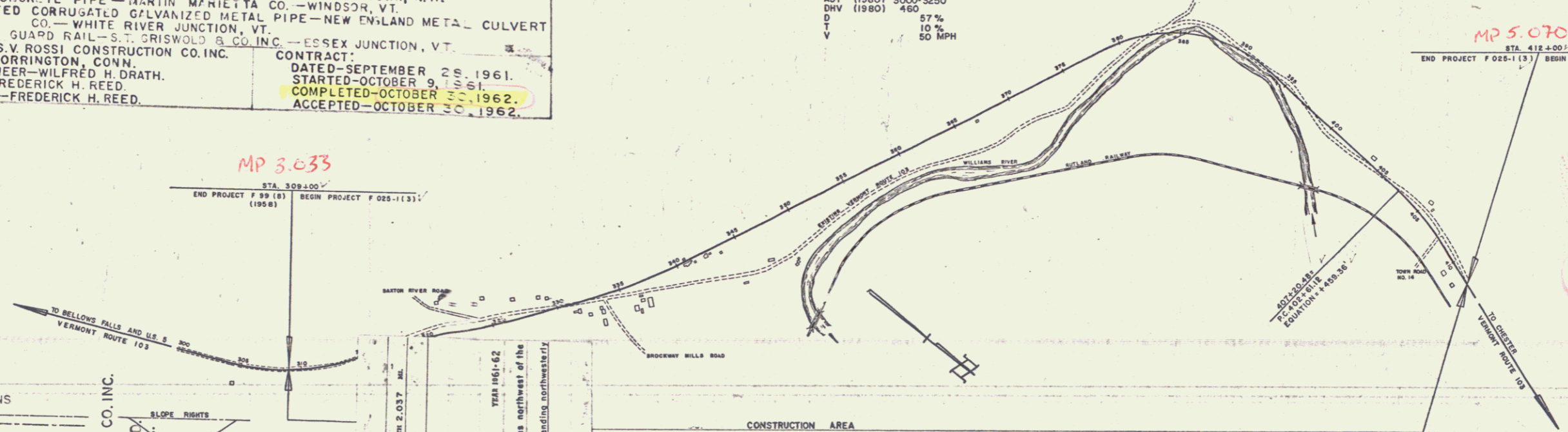
SUBBASE OF GRAVEL - WOODFORD PIT - ROCKINGHAM, VT. - ROVETTI PIT - ROCKINGHAM, VT.
 SUBBASE OF SAND - F.W. WHITCOMB PIT - ROCKINGHAM, VT.
 CRUSHED GRAVEL - CALEDONIA SAND & GRAVEL CO. (WILLIAMS RIVER) - ROCKINGHAM, VT.
 ASPHALT - E.S.C.O. - EVERETT, MASS.
 REFINED TAR - WHITCO CHEMICAL CO. - WORCESTER, MASS.
 BITUMINOUS CONCRETE - COLD RIVER HOT MIX CORP. - NC. WALPOLE, N.H.
 CONCRETE CLASS "B" - CHARLESTOWN READY MIX INC. - CHARLESTOWN, N.H.
 REINFORCED CONCRETE PIPE - MARTIN MARIETTA CO. - WINDSOR, VT.
 ASPHALT COATED CORRUGATED GALVANIZED METAL PIPE - NEW ENGLAND METAL CULVERT CO. - WHITE RIVER JUNCTION, VT.
 CABLE & WOOD GUARD RAIL - S.T. CRISWOLD & CO. INC. - ESSEX JUNCTION, VT.
 CONTRACTOR - S.V. ROSSI CONSTRUCTION CO. INC. - TORRINGTON, CONN.
 RESIDENT ENGINEER - WILFRED H. DRATH.
 INSPECTOR - FREDERICK H. REED.
 RECORD PLANS - FREDERICK H. REED.

CONTRACT DATED - SEPTEMBER 2, 1961.
 STARTED - OCTOBER 9, 1961.
 COMPLETED - OCTOBER 30, 1962.
 ACCEPTED - OCTOBER 30, 1962.

BEGINNING AT A POINT APPROXIMATELY 3.14 MILES NORTHWEST OF THE INTERSECTION OF U.S. ROUTE 5 AND VERMONT ROUTE 103 AND EXTENDING NORTH-WESTERLY 2.037 MILES.

LENGTH OF PROJECT 10,759.36 FEET = 2.037 MILES

| DESIGNATION | DESIGNATION |
|-------------|-------------|
| ADT (1960) | 2380-2600 |
| ADT (1980) | 3000-3250 |
| DIV (1980) | 460 |
| D | 57% |
| T | 10% |
| V | 50 MPH |



RIGHT-OF-WAY DIVISION
TOWN FILE
PERPETUAL
Town of UT 103
(To Be Returned To R.O.W. Division)

CONVENTIONAL SIGNS

| | | | | | | | | | | | | | | | | | | |
|-----|-------------|-----------|------------|------------|-------------------|------------|--------------|----------|----------------|-------------|-------------|---------|------------|--------------|------------|----------------|-------|-------|
| ROW | COUNTY LINE | TOWN LINE | FENCE LINE | STONE WALL | UNFENCED PROPERTY | GUARD RAIL | TRAVELED WAY | RAILROAD | RETAINING WALL | CENTER LINE | SURVEY LINE | CULVERT | DROP INLET | TROLLEY POLE | POWER POLE | TELEPHONE POLE | TREES | HEDGE |
|-----|-------------|-----------|------------|------------|-------------------|------------|--------------|----------|----------------|-------------|-------------|---------|------------|--------------|------------|----------------|-------|-------|

ROCKINGHAM F 025-1(3)
 CONTRACTOR - S.V. ROSSI CONSTRUCTION CO. INC.
 RECORD PLANS - FREDERICK H. REED

ROCKINGHAM F 025-1(3)
 TYPE BITUMINOUS CONCRETE PAVEMENT
 TORRINGTON, CONN.
 Location Beginning at a point approximately 3.14 miles northwest of the intersection of U.S. Route 5 and Vt. Route 103 and extending westerly 2.037 miles.

THESE PLANS ARE SUBJECT TO SUCH REVISIONS AS MAY BE REQUIRED BY THE BUREAU OF PUBLIC ROADS OR THE COMMISSIONER OF HIGHWAYS.
 CONSTRUCTION IS TO BE CARRIED ON IN ACCORDANCE WITH THE PLANS AND THE STANDARD SPECIFICATIONS FOR HIGHWAY AND BRIDGE CONSTRUCTION OF JANUARY 1955 SUBMITTED TO THE BUREAU OF PUBLIC ROADS AS APPROVED JULY 5, 1956, INCLUDING ALL SUBSEQUENT APPROVED REVISIONS AND SUCH REVISED SPECIFICATIONS AND SPECIAL PROVISIONS AS ARE SUBMITTED WITH THE PLANS.

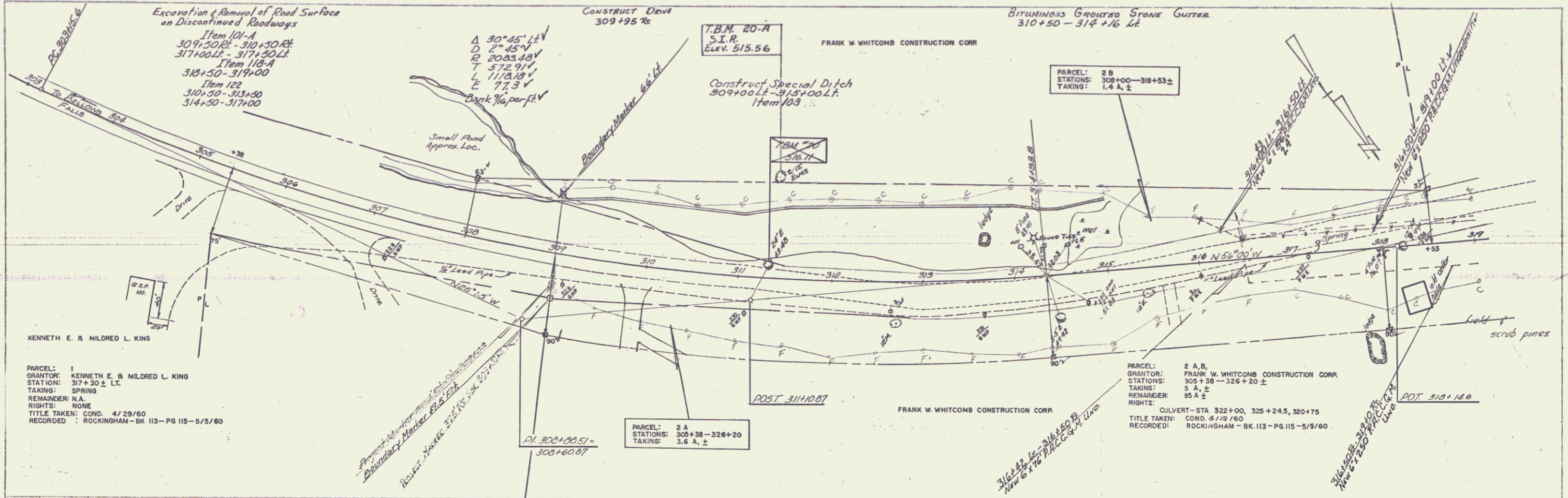
DEPARTMENT OF COMMERCE
BUREAU OF PUBLIC ROADS
Pin # 00R146

APPROVED _____ DATE _____
 DIVISION ENGINEER

PROJECT F NO. 025-1(3)
 SHEET 1 OF 90 SHEETS

| | | | | | |
|---|--|--|--|--|---|
| APPROVED _____ DATE _____ SECONDARY ENGINEER | APPROVED <i>E.H. [Signature]</i> DATE 4/29/60 CONSTRUCTION ENGINEER | APPROVED _____ DATE _____ BRIDGE ENGINEER | APPROVED <i>J.H. Chase</i> DATE 4/29/60 DISTRICT ENGINEER | APPROVED <i>G.M. Lane</i> DATE 4/29/60 HIGHWAY ENGINEER | APPROVED <i>A.D. [Signature]</i> DATE _____ SUPERVISOR |
|---|--|--|--|--|---|

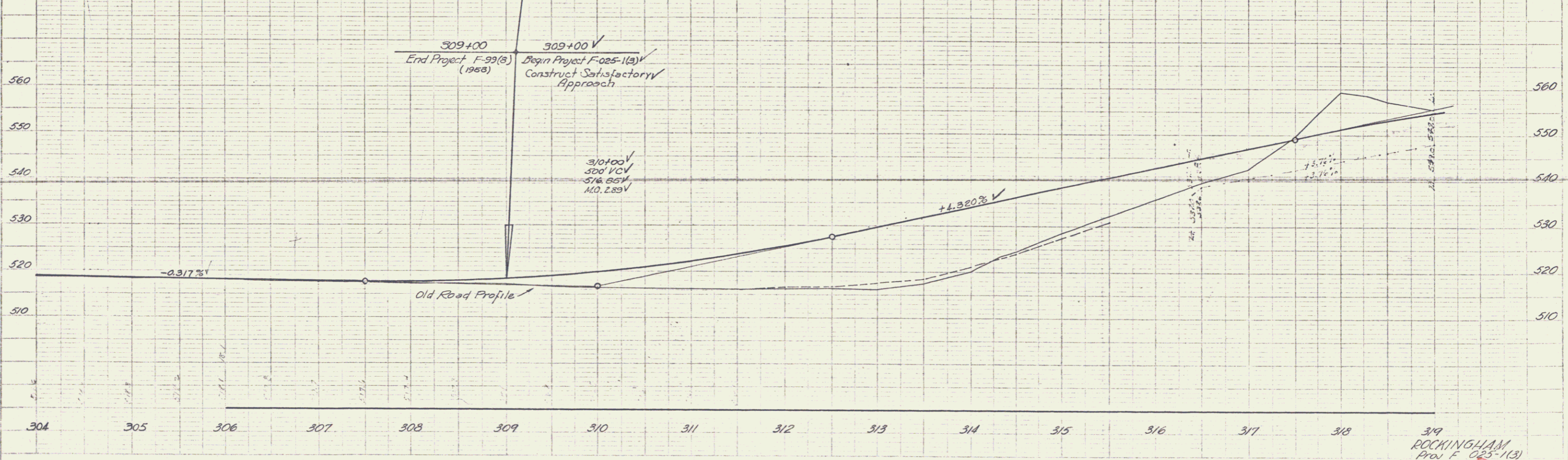
PLAN
 DATE: 1/15/60
 DRAWN BY: [Signature]
 CHECKED BY: [Signature]



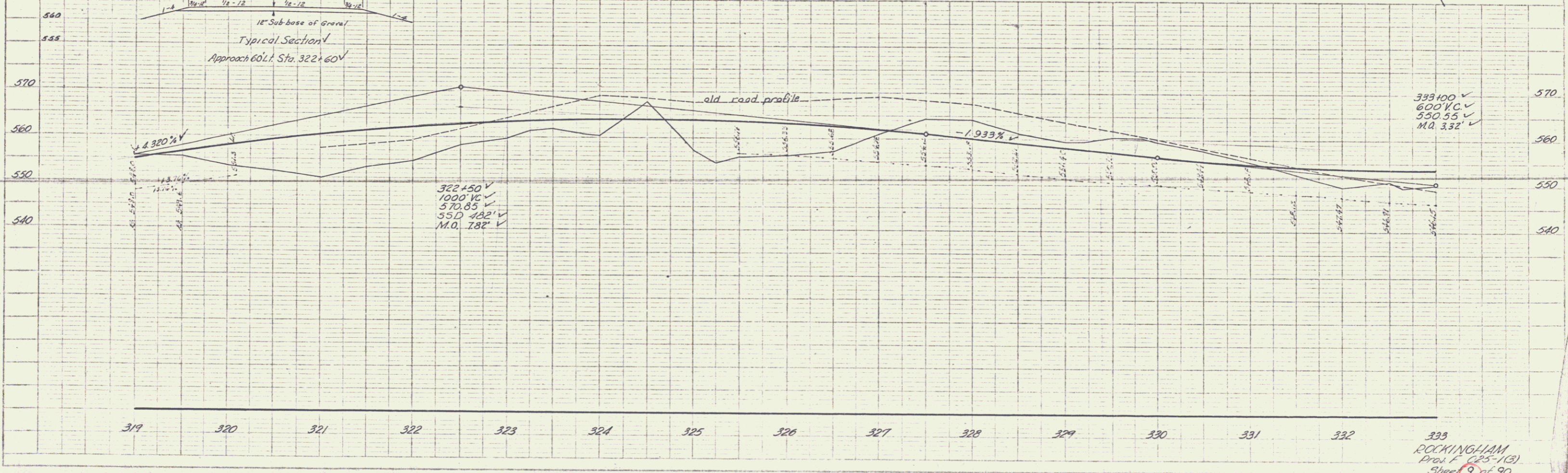
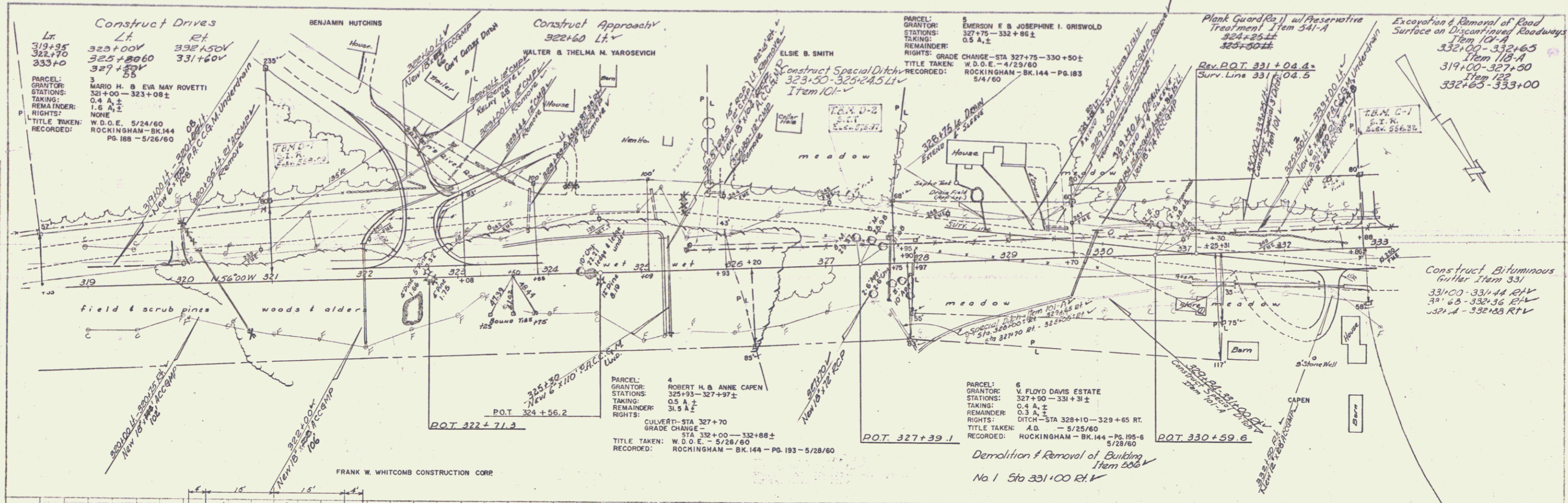
PARCEL: 1
 GRANTOR: KENNETH E. & MILDRED L. KING
 STATION: 317+30 ± LT.
 TAKING: SPRING
 REMAINDER: N.A.
 RIGHTS: NONE
 TITLE TAKEN: COND. 4/29/60
 RECORDED: ROCKINGHAM - BK 113 - PG 115 - 5/5/60

PARCEL: 2 A
 STATIONS: 305+38 - 326+20
 TAKING: 3.6 A. ±

PARCEL: 2 B
 STATIONS: 308+00 - 318+53 ±
 TAKING: 1.4 A. ±



ROCKINGHAM
 Proj. F-025-1(A)
 Sheet (8) of 90



PLAN
SCALE: 1" = 40'
DATE: 5/28/60
BY: [Signature]

PROFILE
SCALE: 1" = 10'
DATE: 5/28/60
BY: [Signature]

Construct Drives
Lt
332+96.18
336+60

Construct Bituminous
Cut/ter Item 331
Appro. 0+44-+100 Rt ✓

Construct Special Ditch
Item 103-A
Appro. 100-2+00 Rt ✓

STEEL GUARD POSTS
Provide & install Water Pipe
Sleeve for Water Pipe
346+20 180° skew 66° Rt
E.S.

Provide & install 3/4"
Copper Water Pipe
345+20 270°
E.S. 305'

Three Cable Guard Rail w/ Steel Posts
Item 543
345+00 Rt - 346+12 Rt

Plank Guard Rail w/ Preservative
Treatment Item 344A
333+30 Rt ✓

CONST. TURNOUT
339+25 Lt - 342+50 Lt ✓

WINDSOR LUMBER CO.

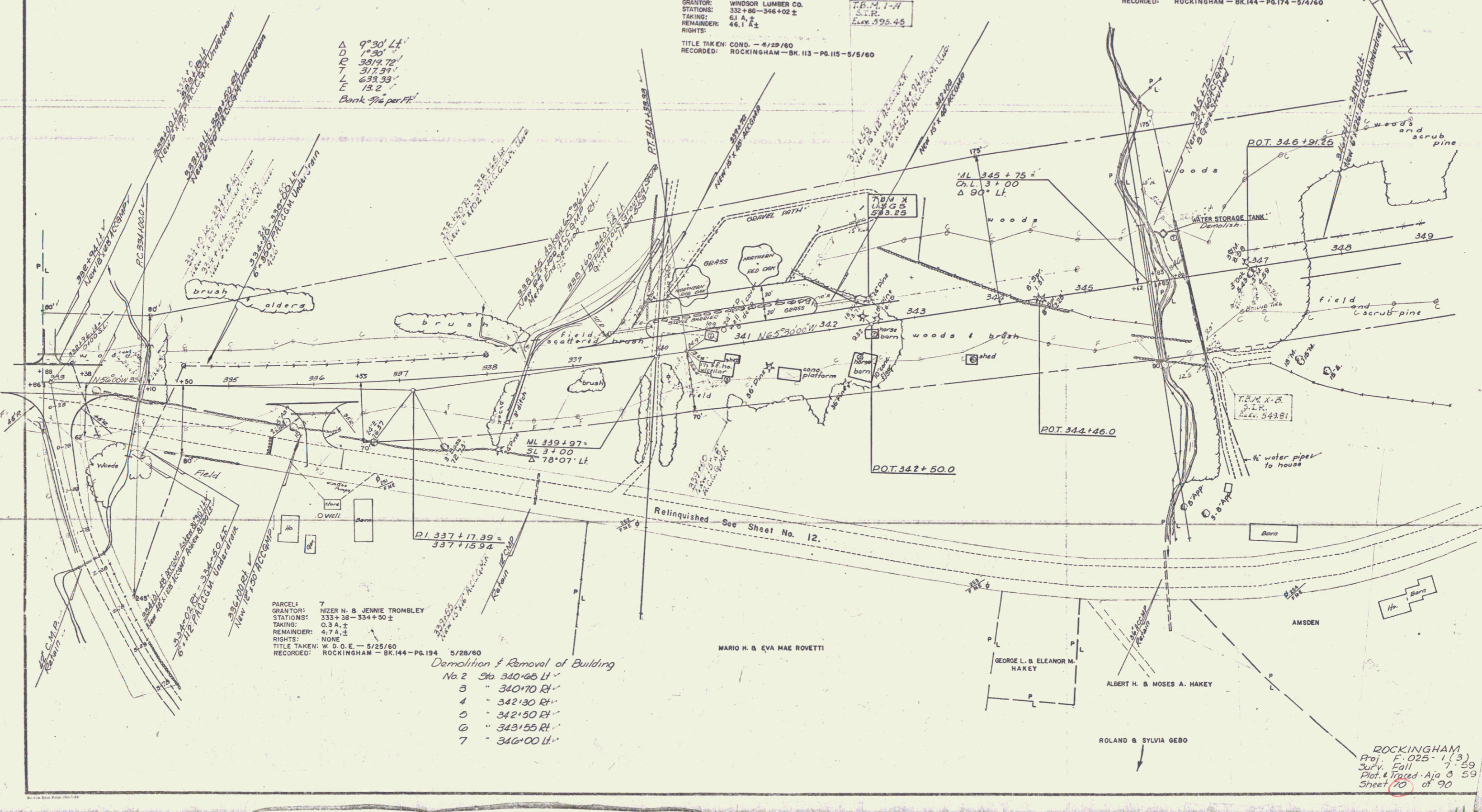
PARCEL 8
GRANTOR: WINDSOR LUMBER CO.
STATIONS: 332+86-346+02 ±
TAKING: 61 A ±
REMAINDER: 46.1 A ±
RIGHTS:

F.B.M. 1-A
S.I.R.
Elev. 595.45

TITLE TAKEN: COND. - 4/22/60
RECORDED: ROCKINGHAM - BK. 113 - PG. 115 - 5/5/60

PARCEL 9
GRANTOR: VERNON R. & EDITH B. AMSDEN
STATIONS: 345+62 - 363+24 ±
TAKING: 11.3 A ±
REMAINDER: 28.7 A ±
RIGHTS: WATER LINE - STA 345+00
DITCHING - STA 345+75 RT.
STA 356+50 LT.
CULVERT - STA 352+00
TITLE TAKEN: W. D. O. E. - 5/2/60
RECORDED: ROCKINGHAM - BK. 144 - PG. 174 - 5/4/60

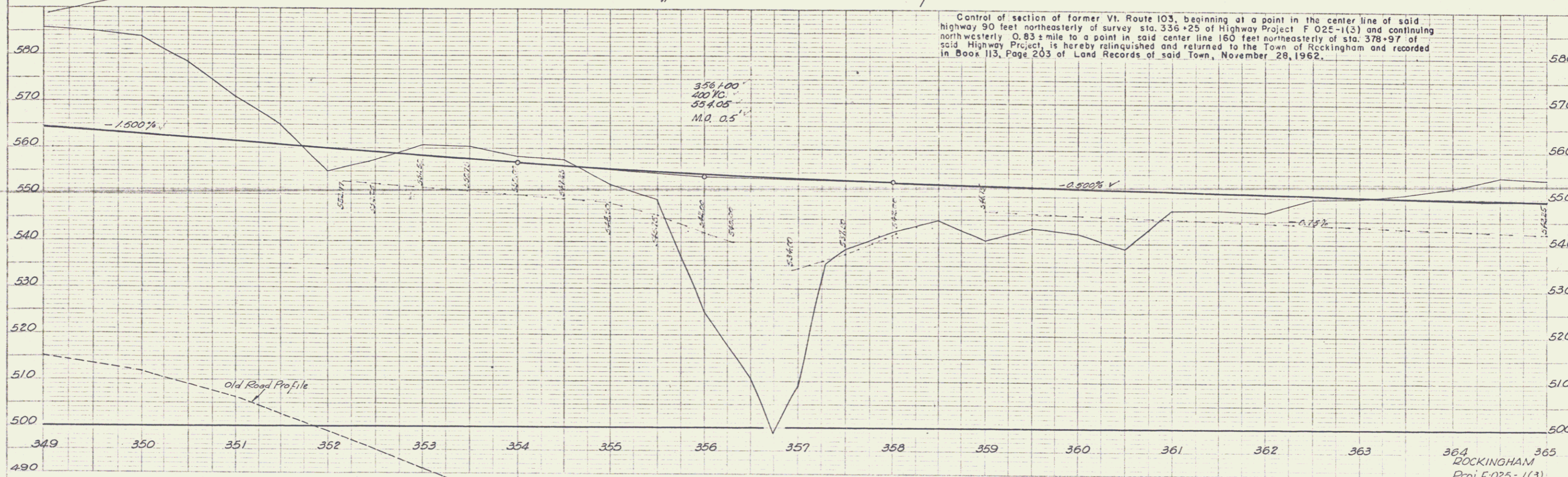
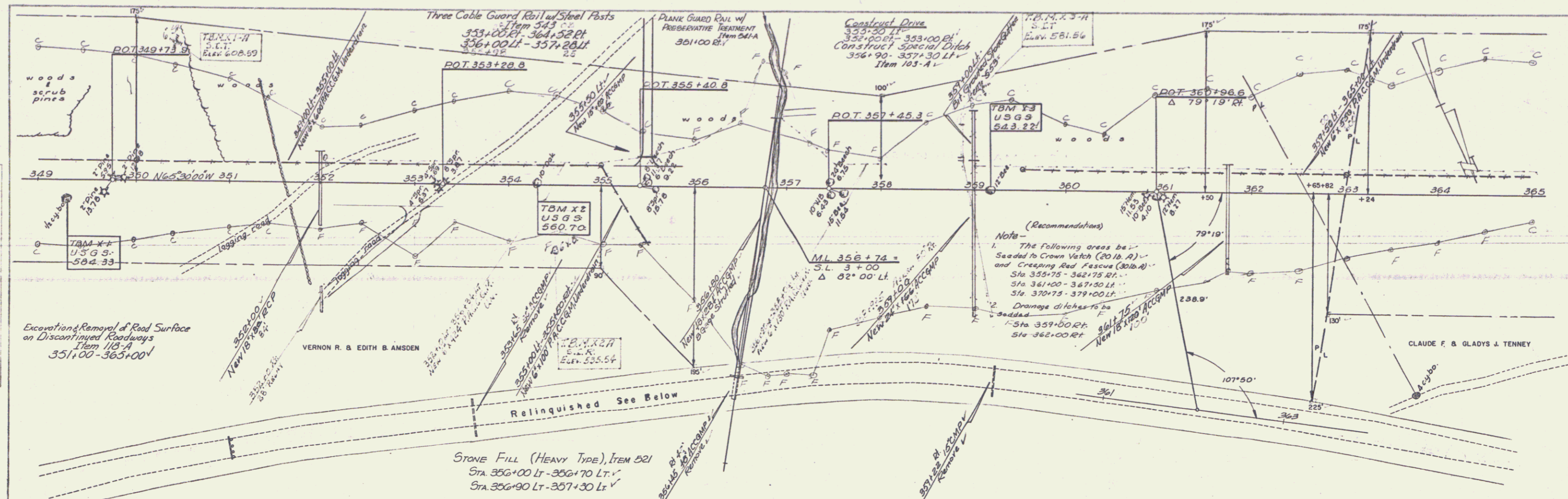
Δ 9° 30' Lt
D 1° 30'
E 3819.72'
T 317.39'
L 633.33'
E 13.2'
Bank 3/4 per ft



PARCEL 7
GRANTOR: NIZER N. & JENNIE TROMBLEY
STATIONS: 333+38 - 334+50 ±
TAKING: 0.3 A ±
REMAINDER: 4.7 A ±
RIGHTS: NONE
TITLE TAKEN: W. D. O. E. - 5/25/60
RECORDED: ROCKINGHAM - BK. 144 - PG. 194

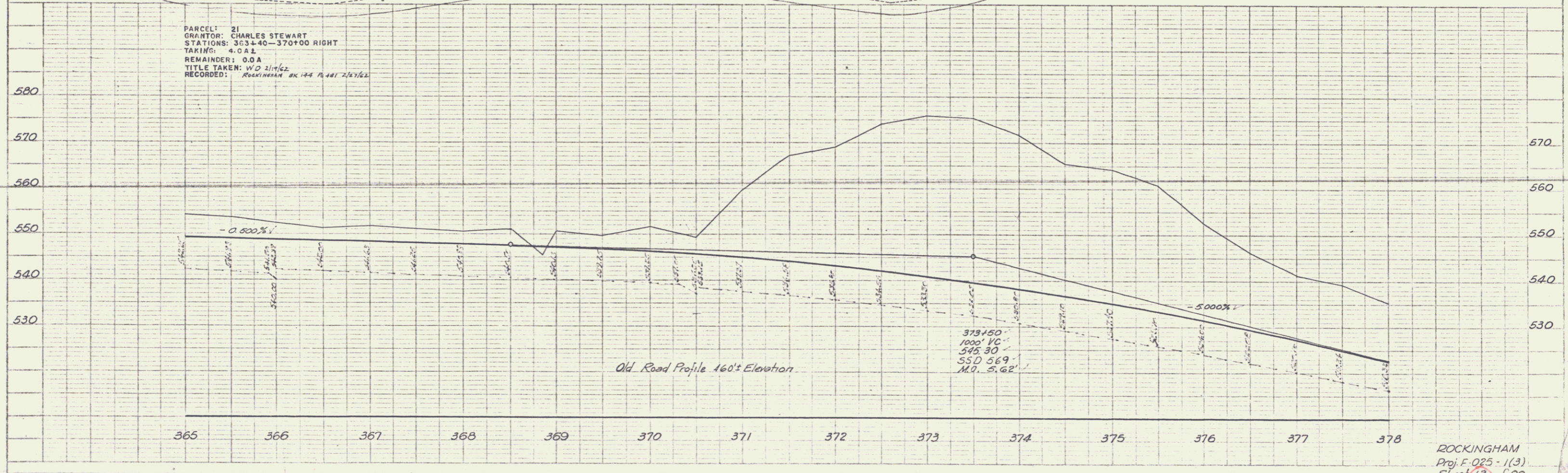
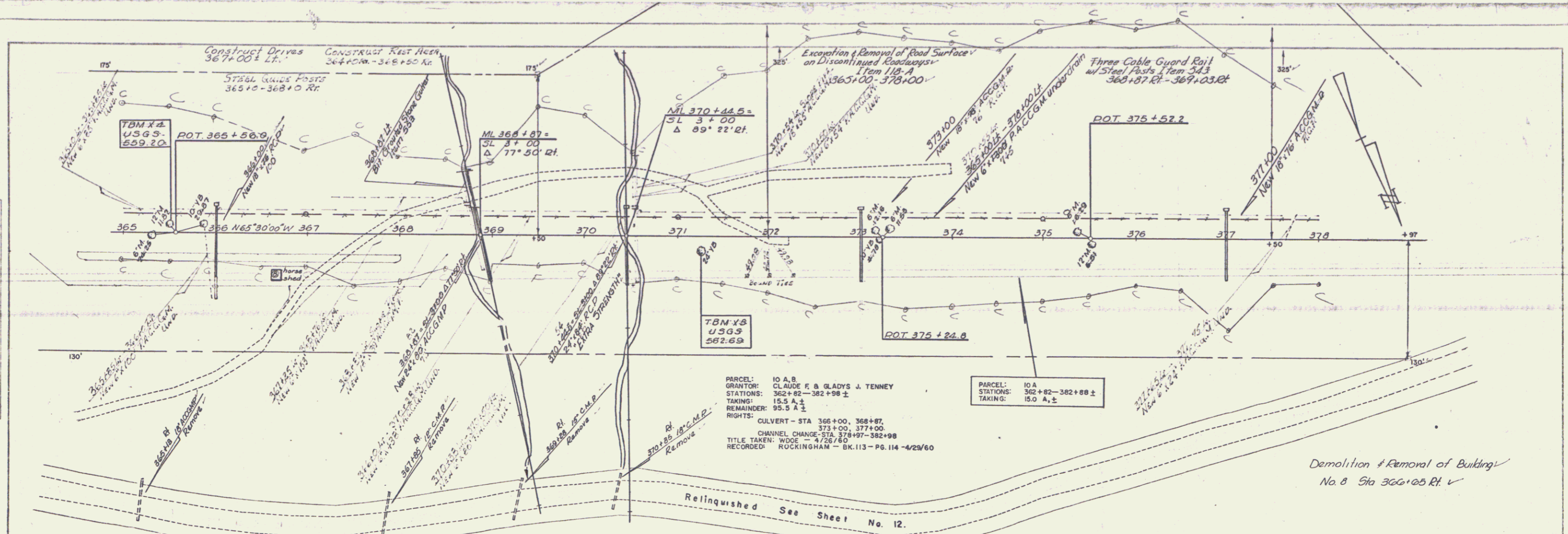
Demolition & Removal of Building
No. 2 Sta 340+65 Lt ✓
3 " 340+70 Rt ✓
4 " 342+30 Rt ✓
5 " 342+50 Rt ✓
6 " 343+55 Rt ✓
7 " 346+00 Lt ✓

ROCKINGHAM
Proj. F. 025-1(3)
Supv. Fall
Plot & Traced - Aja 8 59
Sheet 70 of 90



PLAN
 DATE BOOK BY CHECKED BY
 2/68
 2/68

PLAN
 DATE BOOK BY CHECKED BY
 2/68
 2/68



PLAN
 DATE: 2/25/62
 DRAWN BY: J.W.
 CHECKED BY: J.W.
 IN CHARGE: J.W.

PROFILE
 DATE: 2/25/62
 DRAWN BY: J.W.
 CHECKED BY: J.W.
 IN CHARGE: J.W.

CONSTRUCT
RUST AREA
383+00-384+70

Construct Drives
384+00 Lt to 385+00 Lt
393+65 Lt
388+62 Lt to 390+61 Lt
380+00+24
381+50 Lt

CLAUDE F & GLADYS J TENNEY
Excavation & Removal of Road Surface
on Discontinued Roadways
Item 10-A
378+00-380+10
385+38-387+10
Item 10-B
392+21-394+00

Remove & Disposal of Present
Guard Rail Item 530
385+35 Lt - 386+10 Lt
385+10 Lt - 386+75 Lt

STONE FILL (HEAVY TYPE) ITEM 521
Sta 386+01 Rt - 384+00 Rt (NEAR SIDE)
Sta 381+82 Rt - 384+10 Rt (FAR SIDE)

PARCEL: 12 A
STATIONS: 382+83-385+04 ±
TAKING: 0.4 A ±

STEEL LAGERS Posts
384+30-384+35 ±

Survey
P.I. 386+67.7
384+63.7
Δ 87°55'45" E
D 5°

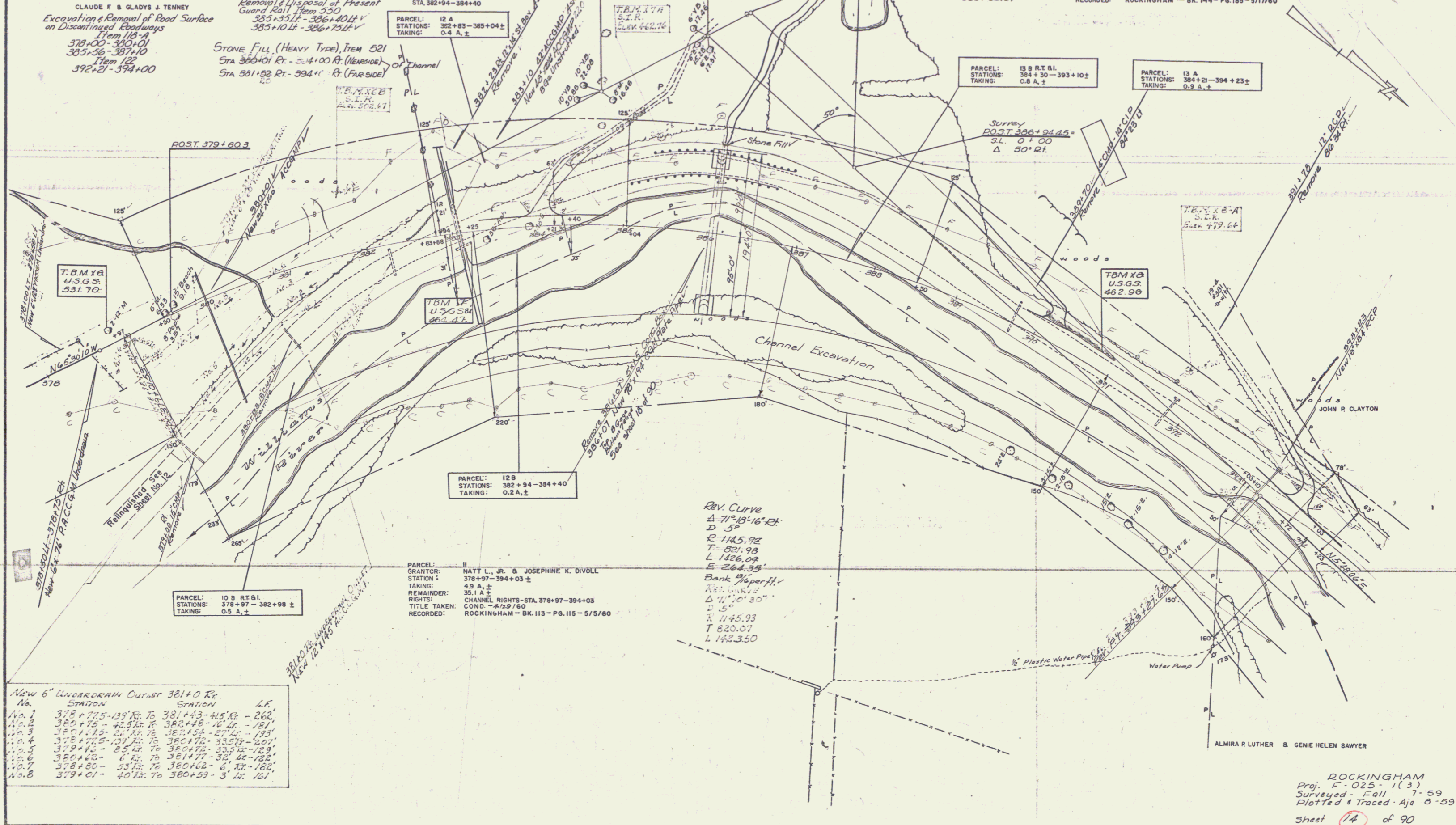
PARCEL: 13 A, B
GRANTOR: JAMES E. & MADEON COMPTON
STATIONS: 384+21 - 394+23 ±
TAKING: 1.7 A ±
REMAINDER: 53.3 A ±
RIGHTS: CHANNEL CHANGE - 384+50-393+10
TITLE TAKEN: W. D. O. E. - 5/12/60
RECORDED: ROCKINGHAM - BK. 144 - PG. 185 - 5/17/60

Three Cable Guard Rail w/ Steel Posts
3.5 ft. = Item 543
379+00 Rt - 384+00 Rt
384+35 Lt - 389+18 Lt
80 388+48

PARCEL: 13 B R.T. B.I.
STATIONS: 384+30-393+10 ±
TAKING: 0.8 A ±

PARCEL: 13 A
STATIONS: 384+21-394+23 ±
TAKING: 0.9 A ±

Survey
POST 386+94.45 ±
S.L. 0+00
Δ 50° Rt.



T.B.M. #4
U.S.G.S.
531.70

PARCEL: 12 B
STATIONS: 382+94-384+40 ±
TAKING: 0.2 A ±

PARCEL: 11
GRANTOR: NATT L., JR. & JOSEPHINE K. DIVOLL
STATION: 378+97-394+03 ±
TAKING: 4.9 A ±
REMAINDER: 35.1 A ±
RIGHTS: CHANNEL RIGHTS - STA. 378+97-394+03
TITLE TAKEN: COND. - 4/12/60
RECORDED: ROCKINGHAM - BK. 113 - PG. 115 - 5/5/60

REV. CURVE
Δ 71°18'16" E
D 5°
R 1145.92
T 821.98
L 1426.09
E 264.35

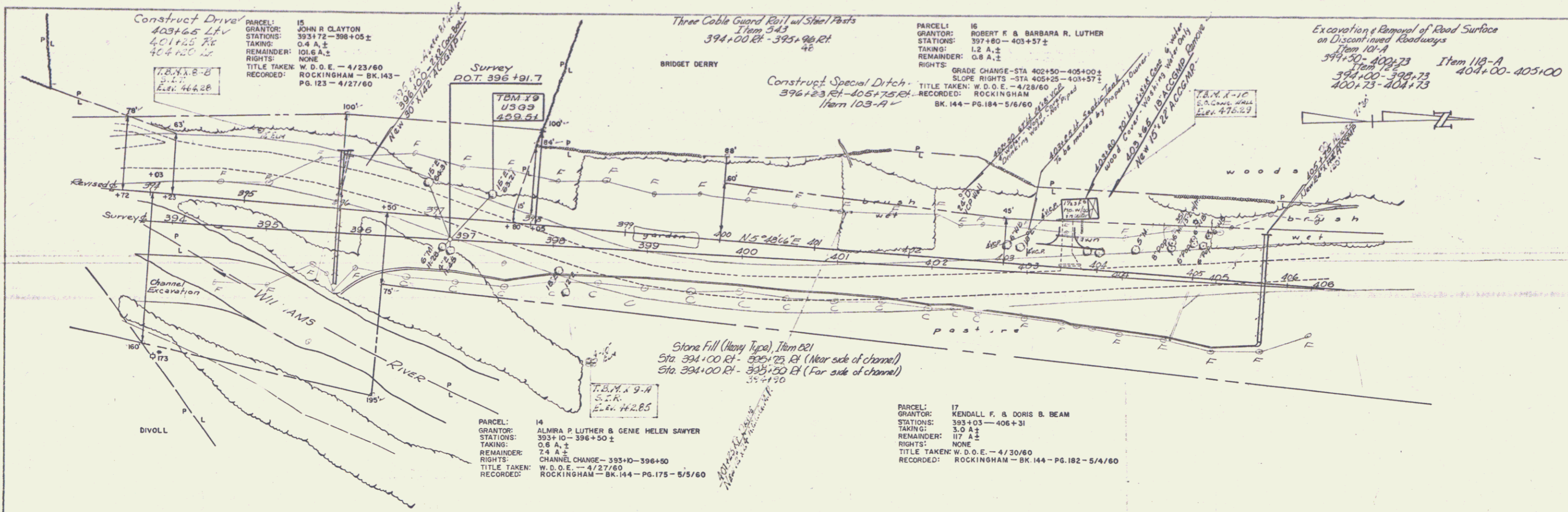
Bank Paperfly
Δ 71°10'30"
D 5°
R 1145.93
T 820.07
L 1423.50

New 6" LINCOLNWAY OUTLET 381+0 Rt

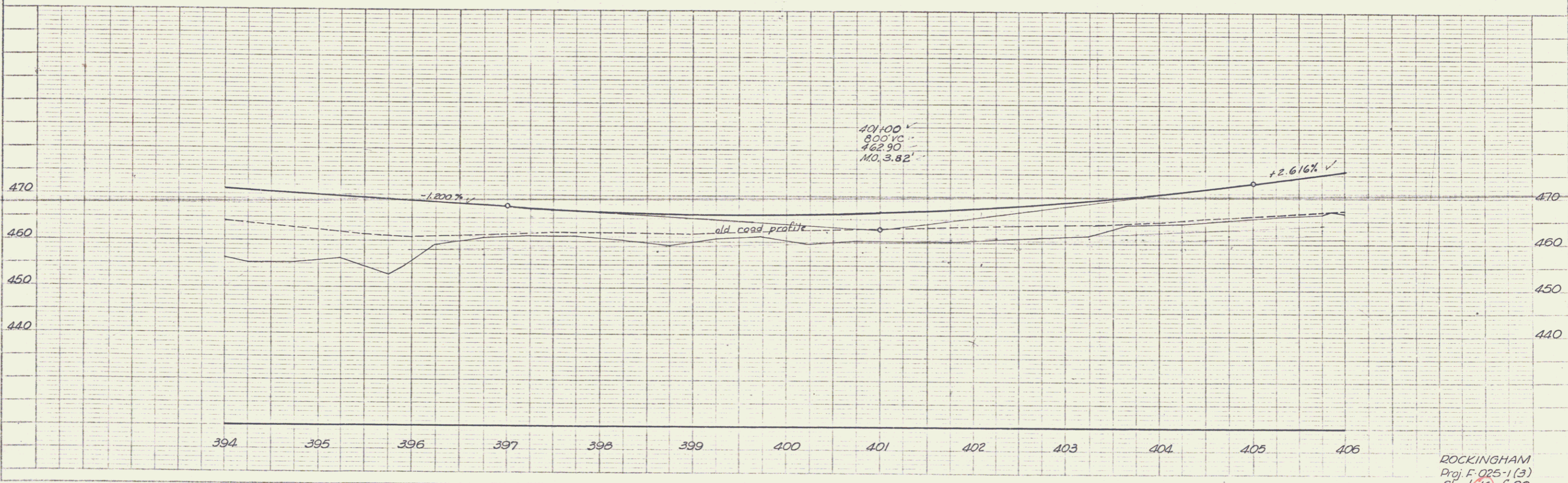
| No. | STATION | STATION | LR |
|-------|--------------------|-----------------------|----|
| No. 1 | 378+75-13' Rt. 75 | 381+43-15' Lt. - 262' | |
| No. 2 | 380+75-42' Lt. 75 | 382+48-12' Lt. - 181' | |
| No. 3 | 380+115-21' Lt. 75 | 382+54-27' Lt. - 193' | |
| No. 4 | 378+75-13' Lt. 75 | 380+72-33' Lt. - 207' | |
| No. 5 | 379+45-25' Lt. 75 | 380+72-33' Lt. - 189' | |
| No. 6 | 380+45-6' Lt. 75 | 381+77-32' Lt. - 182' | |
| No. 7 | 378+80-55' Lt. 75 | 380+62-6' Lt. - 182' | |
| No. 8 | 379+01-40' Lt. 75 | 380+59-3' Lt. - 161' | |

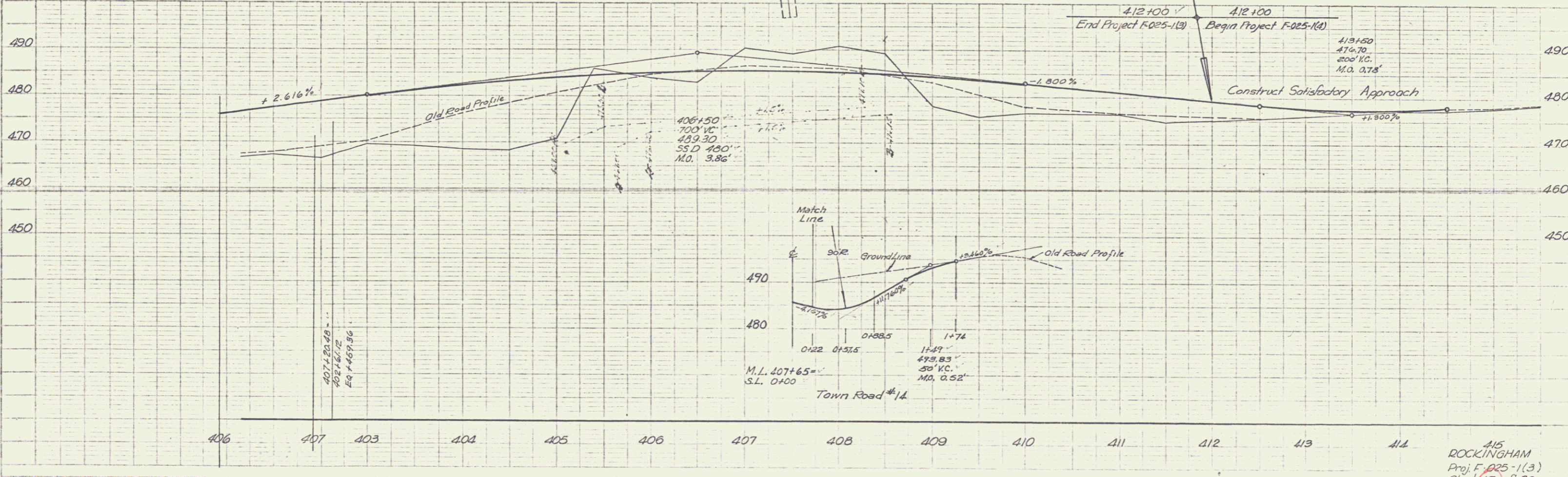
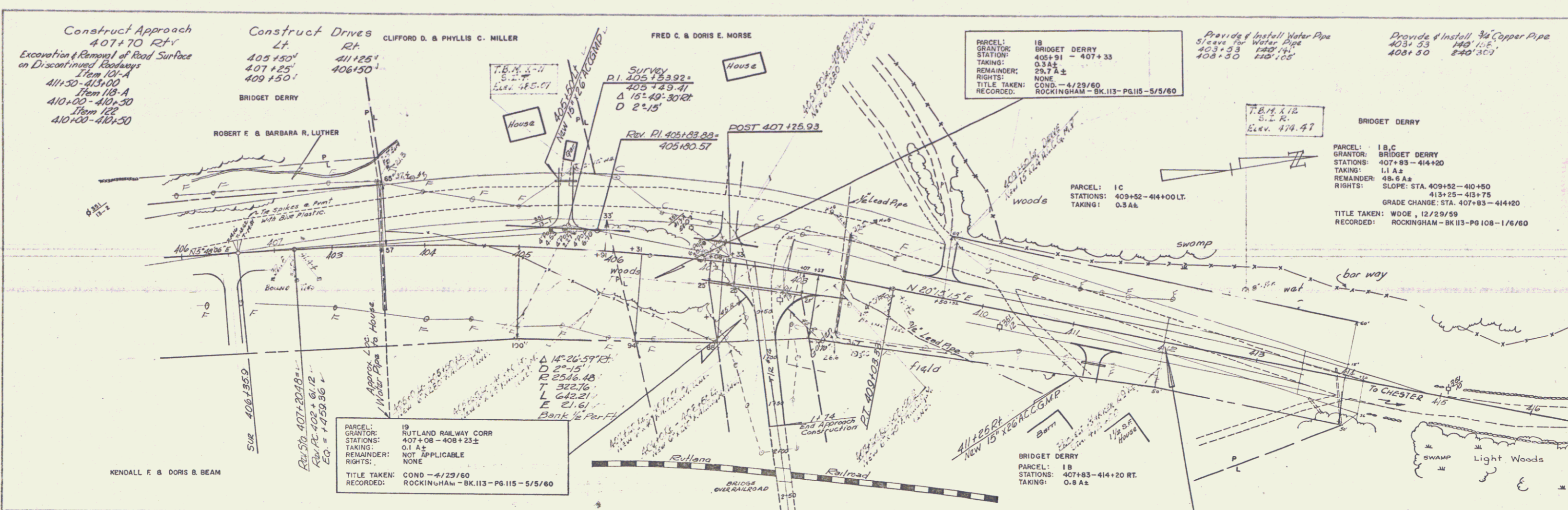
ROCKINGHAM
Proj. F-025-1(3)
Surveyed - Fall
Plotted & Traced - Aja 8-59
Sheet 14 of 90

PLAN
 DATE: 7-59
 BY: J.A.
 CHECKED: J.A.
 TITLE: F.O. 25-1(3)
 SHEET: 16 OF 90



PROFILE
 DATE: 7-59
 BY: J.A.
 CHECKED: J.A.
 TITLE: F.O. 25-1(3)
 SHEET: 16 OF 90





| | |
|-------|-------|
| 7-59 | 8-59 |
| 9-59 | 10-59 |
| 11-59 | 12-59 |
| 1-60 | 2-60 |
| 3-60 | 4-60 |
| 5-60 | 6-60 |
| 7-60 | 8-60 |
| 9-60 | 10-60 |
| 11-60 | 12-60 |
| 1-61 | 2-61 |
| 3-61 | 4-61 |
| 5-61 | 6-61 |
| 7-61 | 8-61 |
| 9-61 | 10-61 |
| 11-61 | 12-61 |
| 1-62 | 2-62 |
| 3-62 | 4-62 |
| 5-62 | 6-62 |
| 7-62 | 8-62 |
| 9-62 | 10-62 |
| 11-62 | 12-62 |
| 1-63 | 2-63 |
| 3-63 | 4-63 |
| 5-63 | 6-63 |
| 7-63 | 8-63 |
| 9-63 | 10-63 |
| 11-63 | 12-63 |
| 1-64 | 2-64 |
| 3-64 | 4-64 |
| 5-64 | 6-64 |
| 7-64 | 8-64 |
| 9-64 | 10-64 |
| 11-64 | 12-64 |
| 1-65 | 2-65 |
| 3-65 | 4-65 |
| 5-65 | 6-65 |
| 7-65 | 8-65 |
| 9-65 | 10-65 |
| 11-65 | 12-65 |
| 1-66 | 2-66 |
| 3-66 | 4-66 |
| 5-66 | 6-66 |
| 7-66 | 8-66 |
| 9-66 | 10-66 |
| 11-66 | 12-66 |
| 1-67 | 2-67 |
| 3-67 | 4-67 |
| 5-67 | 6-67 |
| 7-67 | 8-67 |
| 9-67 | 10-67 |
| 11-67 | 12-67 |
| 1-68 | 2-68 |
| 3-68 | 4-68 |
| 5-68 | 6-68 |
| 7-68 | 8-68 |
| 9-68 | 10-68 |
| 11-68 | 12-68 |
| 1-69 | 2-69 |
| 3-69 | 4-69 |
| 5-69 | 6-69 |
| 7-69 | 8-69 |
| 9-69 | 10-69 |
| 11-69 | 12-69 |
| 1-70 | 2-70 |
| 3-70 | 4-70 |
| 5-70 | 6-70 |
| 7-70 | 8-70 |
| 9-70 | 10-70 |
| 11-70 | 12-70 |

| | |
|-------|-------|
| 7-59 | 8-59 |
| 9-59 | 10-59 |
| 11-59 | 12-59 |
| 1-60 | 2-60 |
| 3-60 | 4-60 |
| 5-60 | 6-60 |
| 7-60 | 8-60 |
| 9-60 | 10-60 |
| 11-60 | 12-60 |
| 1-61 | 2-61 |
| 3-61 | 4-61 |
| 5-61 | 6-61 |
| 7-61 | 8-61 |
| 9-61 | 10-61 |
| 11-61 | 12-61 |
| 1-62 | 2-62 |
| 3-62 | 4-62 |
| 5-62 | 6-62 |
| 7-62 | 8-62 |
| 9-62 | 10-62 |
| 11-62 | 12-62 |
| 1-63 | 2-63 |
| 3-63 | 4-63 |
| 5-63 | 6-63 |
| 7-63 | 8-63 |
| 9-63 | 10-63 |
| 11-63 | 12-63 |
| 1-64 | 2-64 |
| 3-64 | 4-64 |
| 5-64 | 6-64 |
| 7-64 | 8-64 |
| 9-64 | 10-64 |
| 11-64 | 12-64 |
| 1-65 | 2-65 |
| 3-65 | 4-65 |
| 5-65 | 6-65 |
| 7-65 | 8-65 |
| 9-65 | 10-65 |
| 11-65 | 12-65 |
| 1-66 | 2-66 |
| 3-66 | 4-66 |
| 5-66 | 6-66 |
| 7-66 | 8-66 |
| 9-66 | 10-66 |
| 11-66 | 12-66 |
| 1-67 | 2-67 |
| 3-67 | 4-67 |
| 5-67 | 6-67 |
| 7-67 | 8-67 |
| 9-67 | 10-67 |
| 11-67 | 12-67 |
| 1-68 | 2-68 |
| 3-68 | 4-68 |
| 5-68 | 6-68 |
| 7-68 | 8-68 |
| 9-68 | 10-68 |
| 11-68 | 12-68 |
| 1-69 | 2-69 |
| 3-69 | 4-69 |
| 5-69 | 6-69 |
| 7-69 | 8-69 |
| 9-69 | 10-69 |
| 11-69 | 12-69 |
| 1-70 | 2-70 |
| 3-70 | 4-70 |
| 5-70 | 6-70 |
| 7-70 | 8-70 |
| 9-70 | 10-70 |
| 11-70 | 12-70 |

415
ROCKINGHAM
Proj. F-025-1(3)
Sheet 17 of 90