

INDEX OF SHEETS

SHEET NO. 1 TITLE PAGE

2 TYPICAL CROSS SECTION OF IMPROVEMENT 3" BITUMINOUS CONCRETE PAVEMENT ITEM 381-B

3 QUANTITY SHEET (ITEMS)

4 QUANTITY SHEET (DRAINAGE)

5-6 EARTHWORK SHEETS

7-10 PLAN & PROFILE SHEETS

11 DETAILS OF 84" X 264" CGMPP STA. 274+00

12-14 CHANNEL SECTIONS STA. 273+93

15 DETAILS OF 72" X 112" CGMPP STA. 279+76

16 ROADWAY STANDARD SHEET RS 56-1 (BANKING TABLES)

17 ROADWAY STANDARD SHEET RS 56-3 (MARKERS)

18 ROADWAY STANDARD SHEET RS 56-4 (DRAINAGE)

19 ROADWAY STANDARD SHEET RS 56-6 (TYPICAL GRADING & TURNOUTS)

20 ROADWAY STANDARD SHEET RS 56-9 (DRILLING & BLASTING OF SOLID ROCK SUBGRADE)

21 ROADWAY STANDARD SHEET RS 56-11 (THREE CABLE GUARD RAIL WITH STEEL POSTS)

22 ROADWAY STANDARD SHEET RS 56-12 (BARRICADES, SIGNS, & LIGHTS)

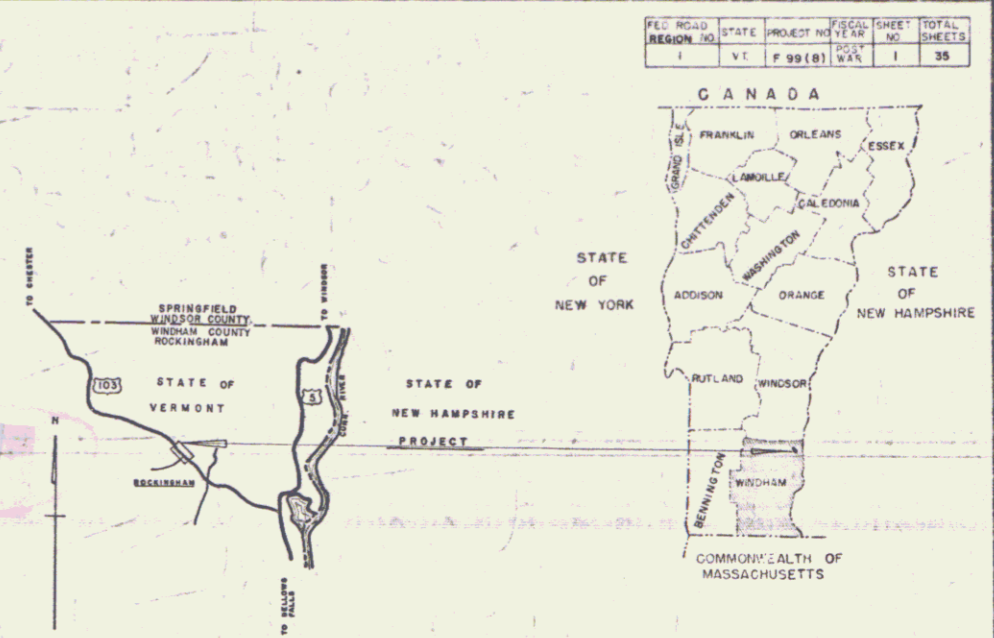
23-35 CROSS SECTIONS

STATE OF VERMONT  
DEPARTMENT OF HIGHWAYS

PROPOSED IMPROVEMENT

STATE PROJECT

**TOWN OF ROCKINGHAM**  
COUNTY OF WINDHAM  
VERMONT ROUTE 103  
BELLOWS FALLS - CHESTER ROAD

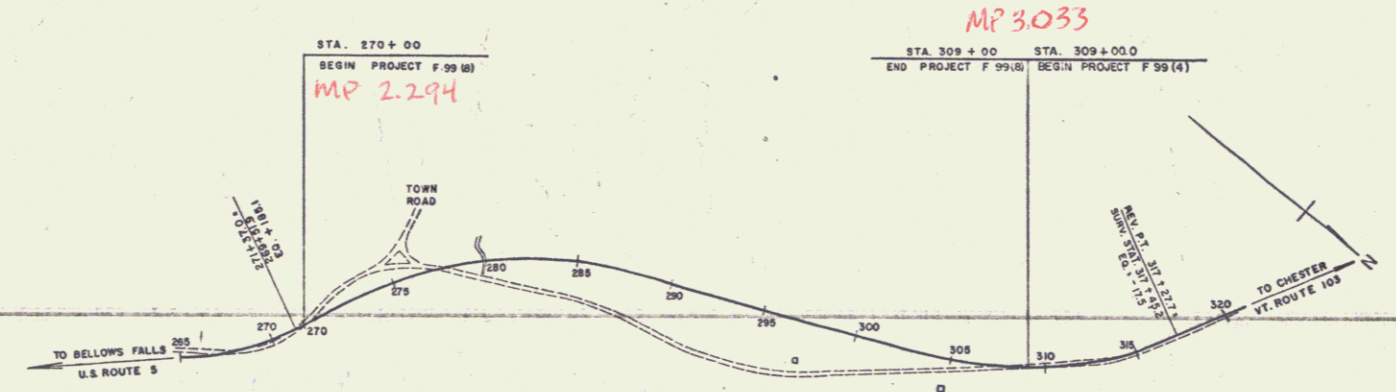


PROJECT NAME & NO.	TYPE	PAVEMENT AREA
ROCKINGHAM F 99(8)	BIT. CONC. PAVE	12379 SQ. YDS.
RECORD PLANS		
MATERIALS		
SUBBASE OF GRAVEL FALLS COUNTRY CLUB, & WHITCOMB FITS. ROCKINGHAM, VT.	REINFORCED CONCRETE PIPE VERMONT CONCRETE PIPE CO. WINDSOR, VT. A.C.C.G.M.P. & PLATE PIPE NEW ENGLAND METAL CULVERT CO. PALMER, MASS.	ROVITTI, BELLOWS
MACADAM BASE COURSE SAND & GRAVEL CO. NO. WALPOLE, N.H.	REINFORCING STEEL RYERSON STEEL CO. PALMER, MASS.	OLD COLONY TAR CO. WORCESTER, MASS.
REFINED TAR	THREE CABLE GUARD RAIL	COLD RIVER HOT MIX CORR. NO. WALPOLE, N.H.
BITUMINOUS CONCRETE PAVEMENT	PAULSON WEBBER CORR.-GE CORR. SUNBURY, PA.	CHARLESTON TRANSIT MIX CONC. CO. CHARLESTON, N.H.
CONTRACTOR FRANK W. WHITCOMB CONST. CORP. NO. WALPOLE, N.H.	CONTRACT DATED FEBRUARY 26, 1958. CONTRACT STARTED APRIL 20, 1958. CONTRACT COMPLETED OCTOBER 22, 1958. CONTRACT ACCEPTED OCTOBER 22, 1958.	
RESIDENT ENGINEER WILFRED H. DRATH		
RECORD PLANS A.G. SPIDLE		

BEGINNING AT A POINT APPROXIMATELY 2.40 MILES NORTHWEST OF THE INTERSECTION OF U.S. ROUTE 5 AND VERMONT ROUTE 103 AND EXTENDING NORTH-WESTERLY 0.738 MILE.

LENGTH OF PROJECT 3,900 FEET = 0.738 MILE

DESIGN	DESIGNATION
ADT (1955)	1920
ADT (1975)	2850
DHV	420
V	57 %
T	10 %



RIGHT-OF-WAY DIVISION  
TOWN FILE  
PERPETUAL  
Town of Rockingham  
(To Be Returned To R.O.W. Division)

NOTE: ANY FURTHER INFORMATION CONCERNING FINAL QUALITIES, MATERIALS OR OTHER DETAILS RELATIVE TO THIS PROJECT MAY BE FOUND IN EITHER THE FIELD BOOKS OR THE ESTIMATE FILE.

CONTRACTOR: Frank W. Whitcomb Const. Corp., No. Walpole, N.H.

RECORD PLANS: A.G. SPIDLE, OCTOBER 22, 1958.

RESIDENT ENGINEER: WILFRED H. DRATH

RECORD PLANS: A.G. SPIDLE

DEFLECTION ANGLE	A
DEGREE OF CURVE	D
RADIUS OF CURVE	R
TANGENT DISTANCE	T
LENGTH OF CURVE	L
EXTERNAL DISTANCE	E
POINT OF INTERSECTION	P.I.
POINT OF CURVE	P.C.
POINT OF TANGENT	P.T.
POINT ON TANGENT	P.O.T.
POINT ON SUB-TANGENT	P.O.S.T.

SCALES

TITLE	1" = 300'
TYPICAL	1" = 25'
PLAN	1" = 50'
PROFILE HORIZONTAL	1" = 50'
PROFILE VERTICAL	1" = 10'
CROSS-SECTIONS	1" = 5'

THESE PLANS ARE SUBJECT TO SUCH REVISIONS AS MAY BE REQUIRED BY THE BUREAU OF PUBLIC ROADS OR THE COMMISSIONER OF HIGHWAYS.

CONSTRUCTION IS TO BE CARRIED ON IN ACCORDANCE WITH THE PLANS AND THE STANDARD SPECIFICATIONS FOR HIGHWAY AND BRIDGE CONSTRUCTION OF JANUARY 1956, INCLUDING ALL SUBSEQUENT APPROVED REVISIONS AND SUCH REVISED SPECIFICATIONS AND SPECIAL PROVISIONS AS ARE SUBMITTED WITH THE PLANS.

DEPARTMENT OF COMMERCE  
BUREAU OF PUBLIC ROADS

Pin # 00R145

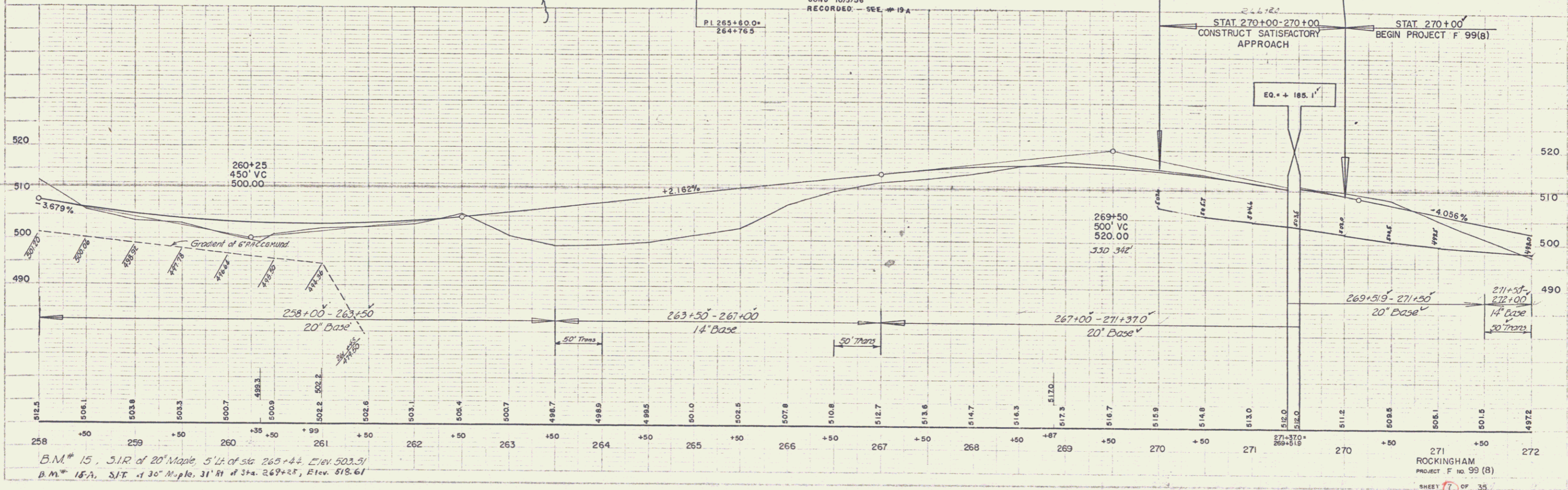
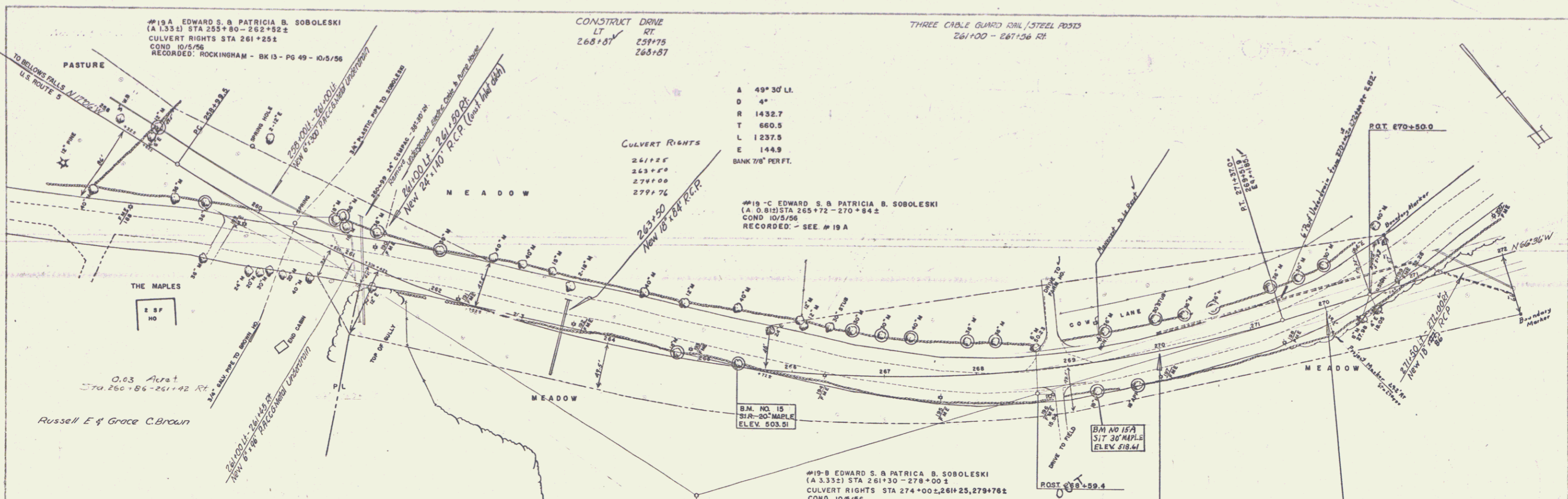
APPROVED: [Signature] ENGINEER DATE: [Date]

PROJECT: F 99(8) NO. 99(8)

SHEET 1 OF 35 SHEETS

APPROVED: [Signature] SECONDARY ENGINEER DATE: [Date]	APPROVED: [Signature] DISTRICT ENGINEER DATE: 1-7-1958	APPROVED: [Signature] DISTRICT ENGINEER DATE: 1/31/58	APPROVED: [Signature] DISTRICT ENGINEER DATE: 1/7/58	APPROVED: [Signature] DISTRICT ENGINEER DATE: 1/7/58
---	--	---	--	--

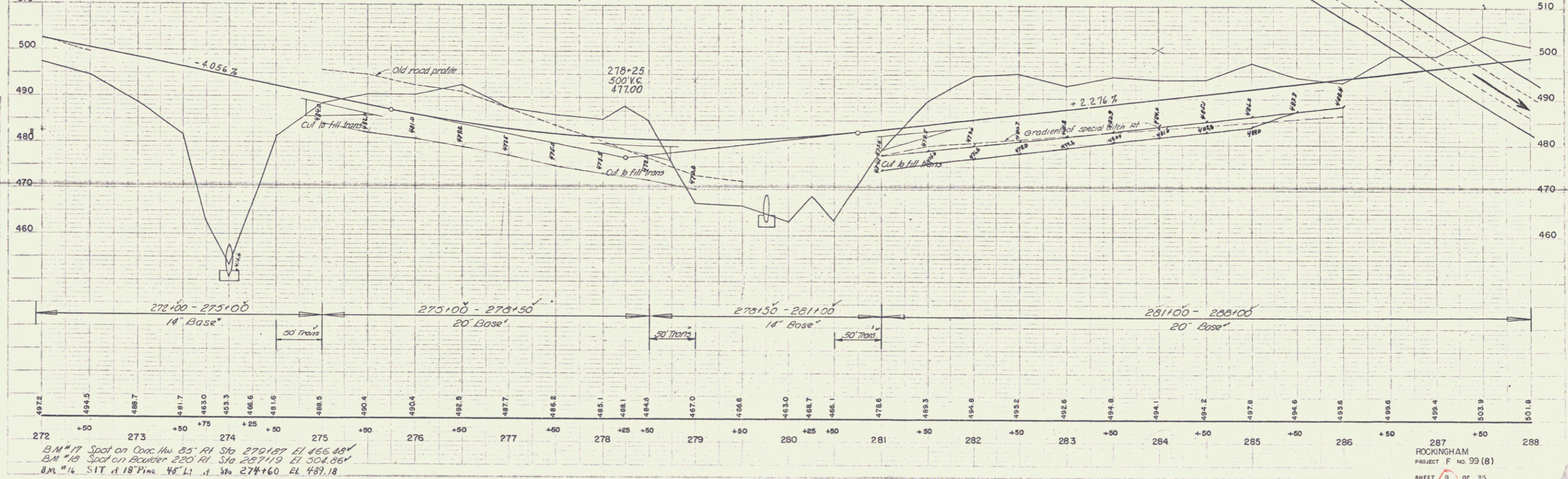
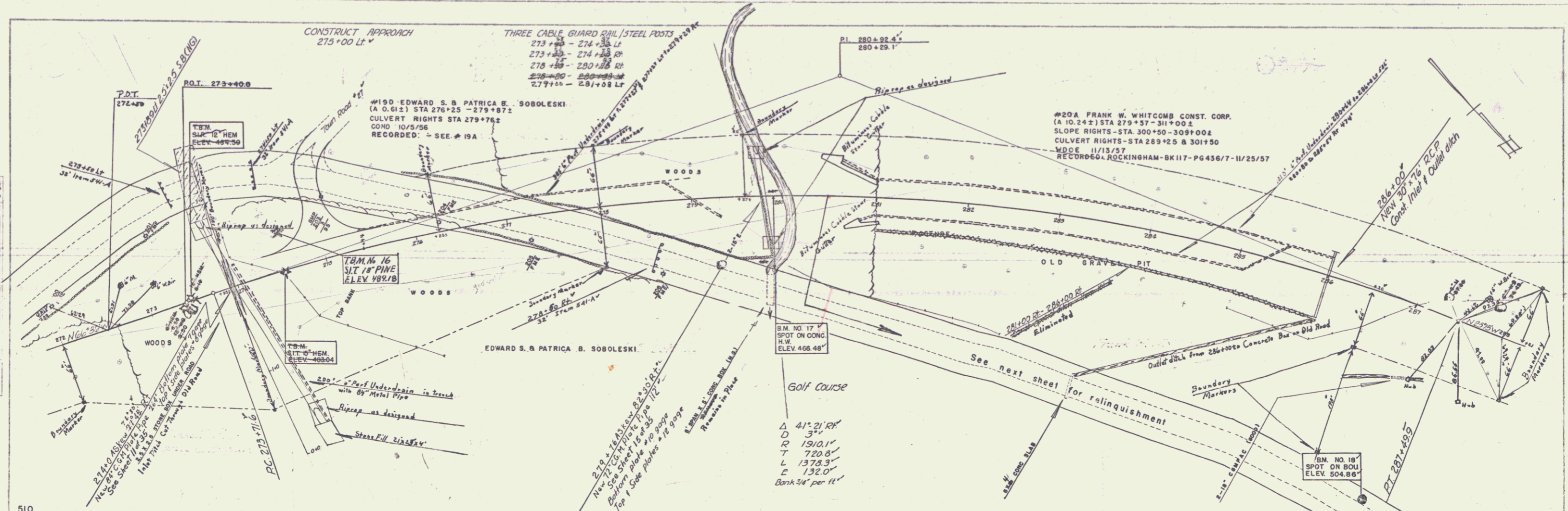
PLAN	BOOK	NO.
SECTION	NO.	
DATE		
BY		
CHECKED		
APPROVED		



B.M. # 15, S.I.R. of 20' Maple, 5' W. of sta. 263+42, Elev. 503.51  
 B.M. # 15A, S.I.R. of 30' Maple, 31' N. of sta. 269+28, Elev. 518.61

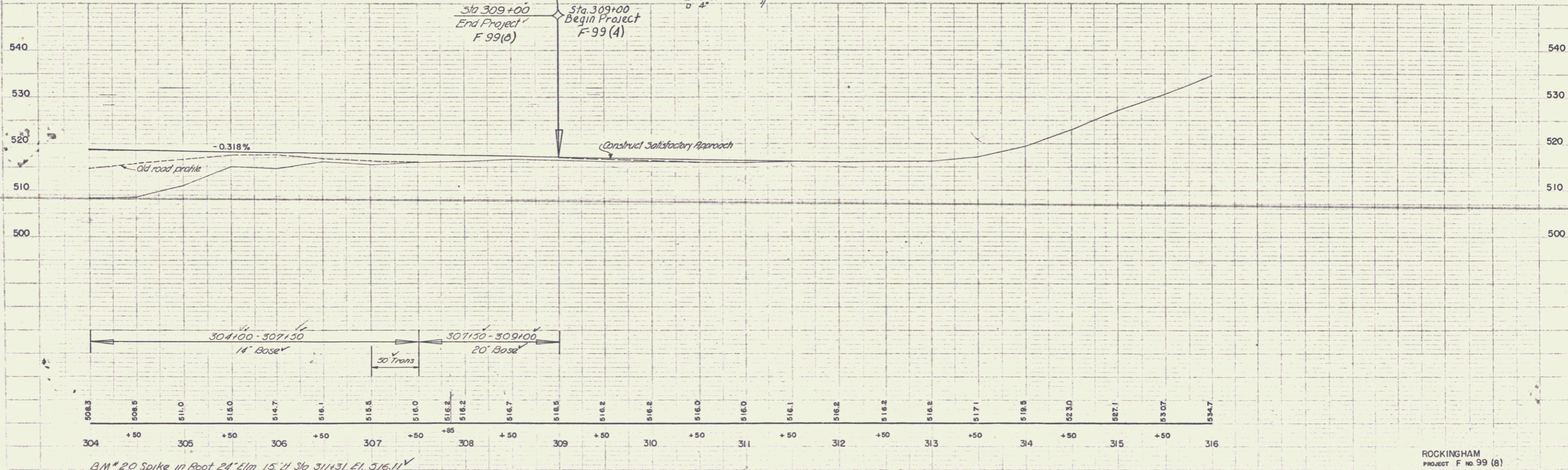
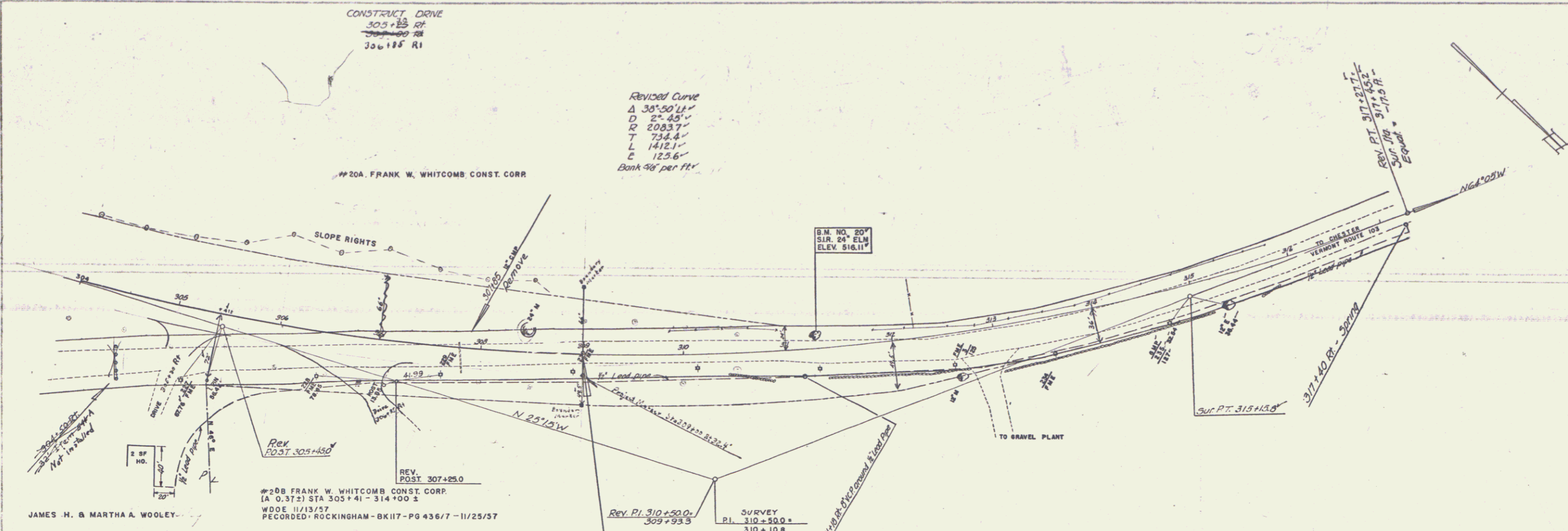
ROCKINGHAM  
 PROJECT F 99 (B)  
 SHEET 7 OF 35

PLAN  
 POINT  
 A1A  
 B-34  
 B-34  
 P-34





DATE	8-54
BY	8-54
CHKD	8-54
APP'D	8-54
TR	AJA



5