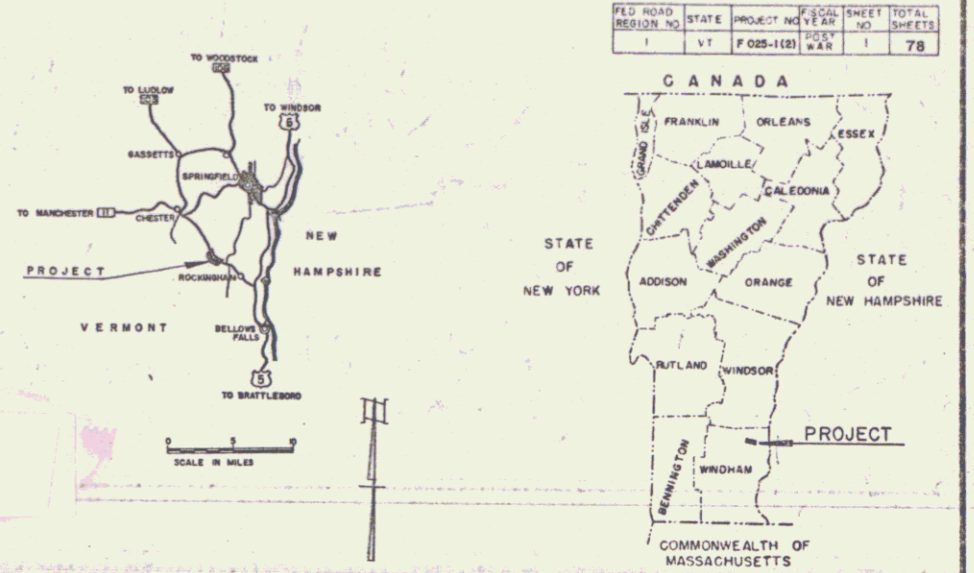


INDEX OF SHEETS

SHEET NO.	TITLE PAGE
1	TYPICAL CROSS-SECTION OF IMPROVEMENT 3" BITUMINOUS CONCRETE PAVEMENT, ITEM 351-B MOD.
2	QUANTITY SHEET (ITEMS)
3	QUANTITY SHEET (DRAINAGE)
4	EARTHWORK SHEETS
5-6	PLAN AND PROFILE SHEETS
7-14	SB-PP # 1
15	SB-PP # 2
16	A-61 (DRILLING AND BLASTING)
17	B-1 (BANKING TABLES)
18	B-5 (TYPICAL SLOPE GRADING)
19	ISA C-1 (CURBS)
20	D-2 (DRAINAGE)
21	D-3 (GUTTERS)
22	D-4 (FLUSHING BASINS)
23	D-8 (REINFORCED CONCRETE DROP INLET)
24	E-1 (BARRICADES, SIGNS AND LIGHTS)
24A-E-9	(CONSTRUCTION IDENTIFICATION SIGNS)
25	G-2-a (TWO CABLE GUARD RAIL)
26	G-3 (THREE CABLE GUARD RAIL WITH STEEL POSTS)
27	G-4 (STEEL MARKER POSTS AND PLANK GUARD RAIL)
28	J-1 (PROJECT AND BOUNDARY MARKERS)
29-A-76	CROSS-SECTIONS
77-78	CHANNEL SECTIONS

STATE OF VERMONT
DEPARTMENT OF HIGHWAYS
PROPOSED IMPROVEMENT
FEDERAL AID PROJECT
TOWN OF ROCKINGHAM
COUNTY OF WINDHAM
VERMONT ROUTE 103
BELLOWS FALLS-CHESTER ROAD



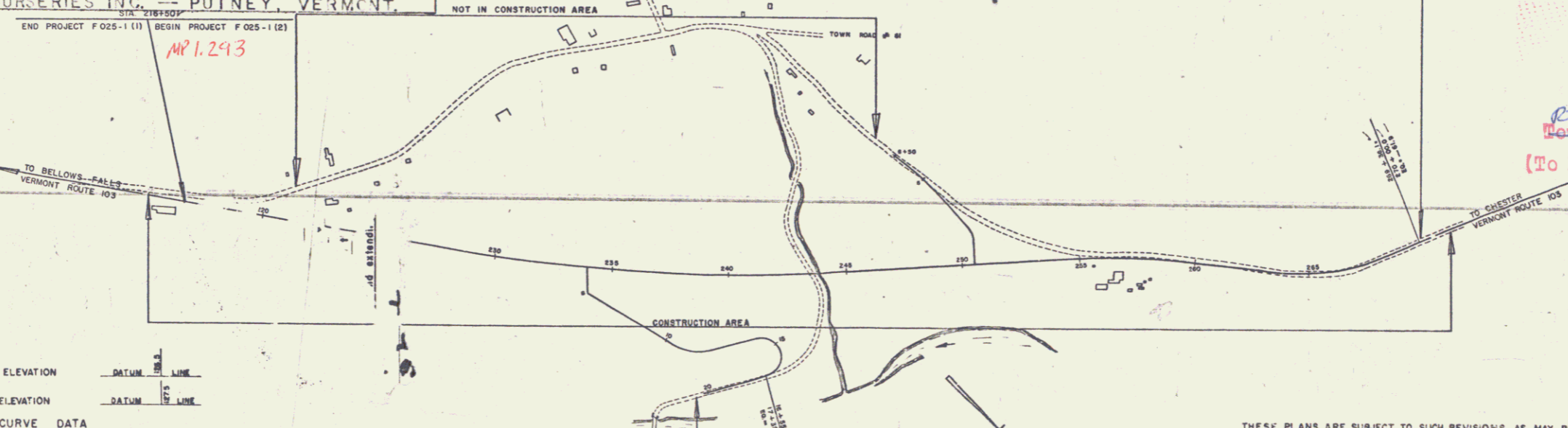
BEGINNING AT POINT 1.37 MILES NORTHWEST OF THE INTERSECTION OF U.S. ROUTE 5 AND VERMONT ROUTE 103 AND EXTENDING NORTHWESTERLY 1.002 MILES
LENGTH OF PROJECT 5,288.1 FEET = 1.002 MILES.

ADT 1960	2500 - 2750
ADT 1980	3100 - 3400
DHV 1980	480
D	57%
T	8%
V	50 M.P.H.

PROJECT NAME & NUMBER TYPE PAVEMENT AREA
ROCKINGHAM F 025-1(2) BIT. CONC. PAVT. 14,102 SY
RECORD PLANS
MATERIALS

SUB BASE OF GRAVEL - TOWN OF ROCKINGHAM PIT, SMITH PIT & ROVETTI PIT - ROCKINGHAM, VT.
CRUSHED GRAVEL BASE COURSE, GRAVEL SHOULDERS & BITUMINOUS CONCRETE PAVEMENT & CURB - COLD RIVER SAND AND GRAVEL CO. - NO. WALPOLE, NEW HAMPSHIRE.
REFINED TAR - OLD COLONY TAR CO. - EVERETT, MASSACHUSETTS.
CUTBACK ASPHALT - ESSO - EVERETT, MASSACHUSETTS.
ASPHALT CEMENT - TRIMOUNT BITUMINOUS PRODUCTS CO. - EVERETT, MASSACHUSETTS.
CONCRETE CLASS "B" - CHARLESTOWN READY MIX INC. - CHARLESTOWN, NEW HAMPSHIRE.
REINFORCING STEEL - VERMONT STRUCTURAL STEEL CO. - BURLINGTON, VERMONT.
REINFORCED CONCRETE PIPE - MARTIN MARIETTA CO. - WINDSOR, VERMONT.
ASPHALT COATED CORRUGATED GALVANIZED METAL PIPE - NORTHEASTERN CULVERT CORP. - WESTMINSTER, VT. - 8' NEW ENGLAND METAL CULVERT CO. - WHITE RIVER JUNCTION, VT.
CAST IRON COVERS FOR FLUSHING BASINS - NORTHEASTERN CULVERT CORP. - WESTMINSTER, VT.
CAST IRON DROP INLET GRATES - E.L. LEBARON FOUNDRY CO. - BROCKTON, MASSACHUSETTS.
TWO & THREE CABLE GUARD RAIL, STEEL GUIDE & MARKER POSTS - S.T. GRISWOLD & CO. INC. - ESSEX JUNCTION, VERMONT.
TREES, SHRUBS & VINES - PUTNEY NURSERIES INC. - PUTNEY, VERMONT.

CONTRACTOR - ROGERS BROTHERS, RANDOLPH, VERMONT.
RESIDENT ENGINEER - GEORGE J. ABAIR.
RECORD PLANS - A.G. SPIDLE.
CONTRACT DATED - OCTOBER 4, 1961.
STARTED - OCTOBER 9, 1961.
COMPLETED - SEPTEMBER 5, 1962.
ACCEPTED - SEPTEMBER 5, 1962.



CONVENTIONAL SIGNS

RIGHT OF WAY	-----
COUNTY LINE	-----
TOWN LINE	-----
FENCE LINE	-----
STONE WALL	-----
UNFENCED PROPERTY	-----
GUARD RAIL	-----
TRAVELED WAY	-----
RAILROAD	-----
RETAINING WALL	-----
CENTER LINE	-----
SURVEY LINE	-----
GULVERT	-----
DROP INLET	-----
TROLLEY POLE	-----
POWER POLE	-----
TELEPHONE POLE	-----
TREES	-----
RESIDE	-----
SLOPE RIGHTS	-----

ROCKINGHAM F 025-1(2)
CONTRACTOR - ROGERS BROS., RANDOLPH, VT.
RECORD PLANS - A.G. SPIDLE.
CONSTRUCTION COMPLETED - SEPTEMBER 5, 1962.

SCALES

TITLE	1" = 300'
TYPICAL	3/8" = 1'
PLAN	1" = 50'
PROFILE HORIZONTAL	1" = 50'
PROFILE VERTICAL	1" = 10'
CROSS-SECTIONS	1" = 10'

RIGHT-OF-WAY DIVISION
TOWN FILE
PERPETUAL
Town of UT 103
(To Be Returned To R.O.W. Division)

NOTE: ANY FURTHER INFORMATION CONCERNING FINAL QUANTITIES SHOULD BE OBTAINED FROM THE FIELD OFFICE OF THE BUREAU OF PUBLIC ROADS.

THESE PLANS ARE SUBJECT TO SUCH REVISIONS AS MAY BE REQUIRED BY THE BUREAU OF PUBLIC ROADS OR THE COMMISSIONER OF HIGHWAYS.
CONSTRUCTION IS TO BE CARRIED ON IN ACCORDANCE WITH THE PLANS AND THE STANDARD SPECIFICATIONS FOR HIGHWAY AND BRIDGE CONSTRUCTION OF JANUARY 1956 SUBMITTED TO THE BUREAU OF PUBLIC ROADS AS APPROVED JULY 5, 1956, INCLUDING ALL SUBSEQUENT APPROVED REVISIONS AND SUCH REVISED SPECIFICATIONS AND SPECIAL PROVISIONS AS ARE SUBMITTED WITH THE PLANS.

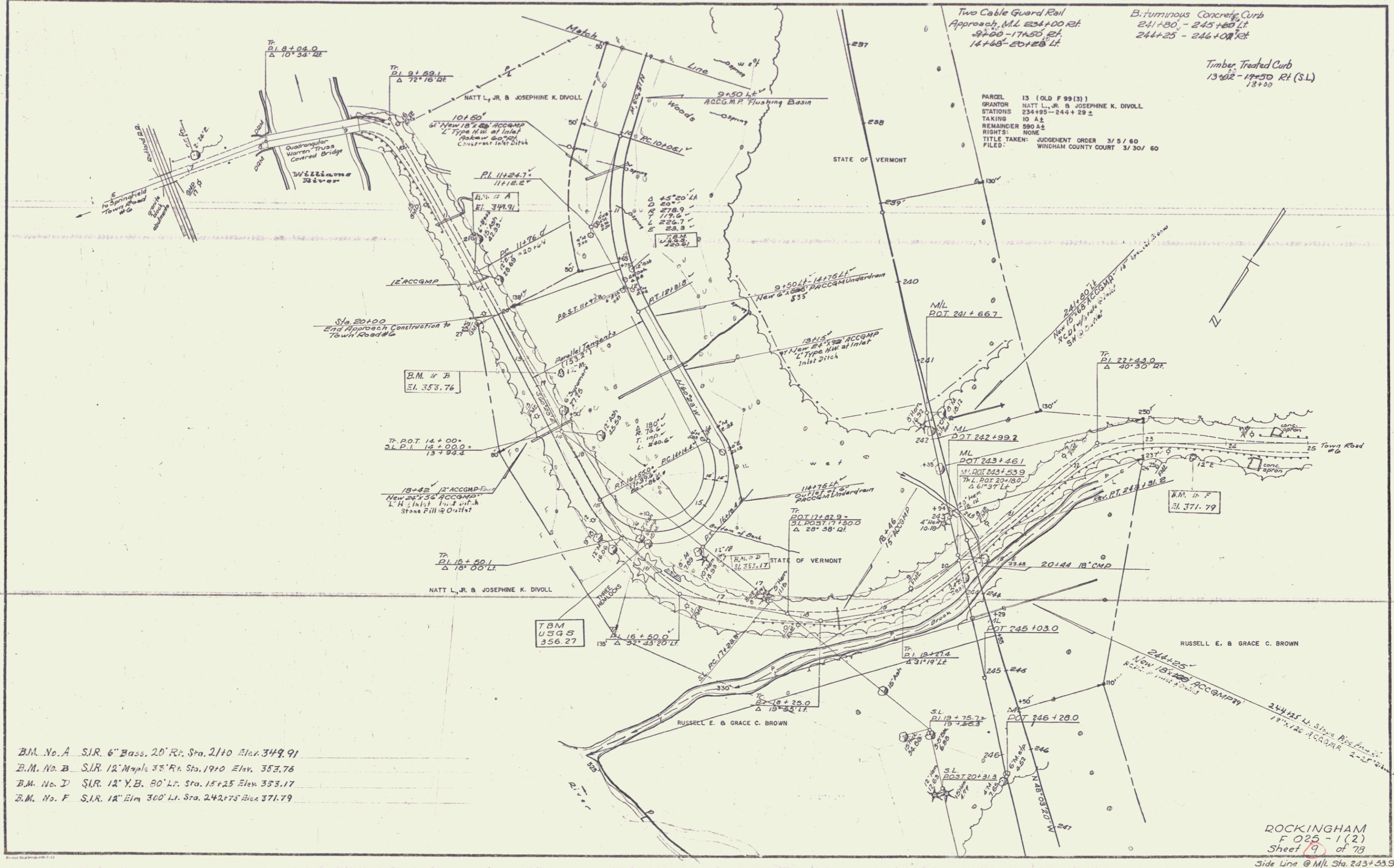
DEPARTMENT OF COMMERCE
BUREAU OF PUBLIC ROADS
Pin # 002144

APPROVED _____
DIVISION ENGINEER DATE _____

PROJECT F NO. 025-1(2)
SHEET 1 OF 78 SHEETS

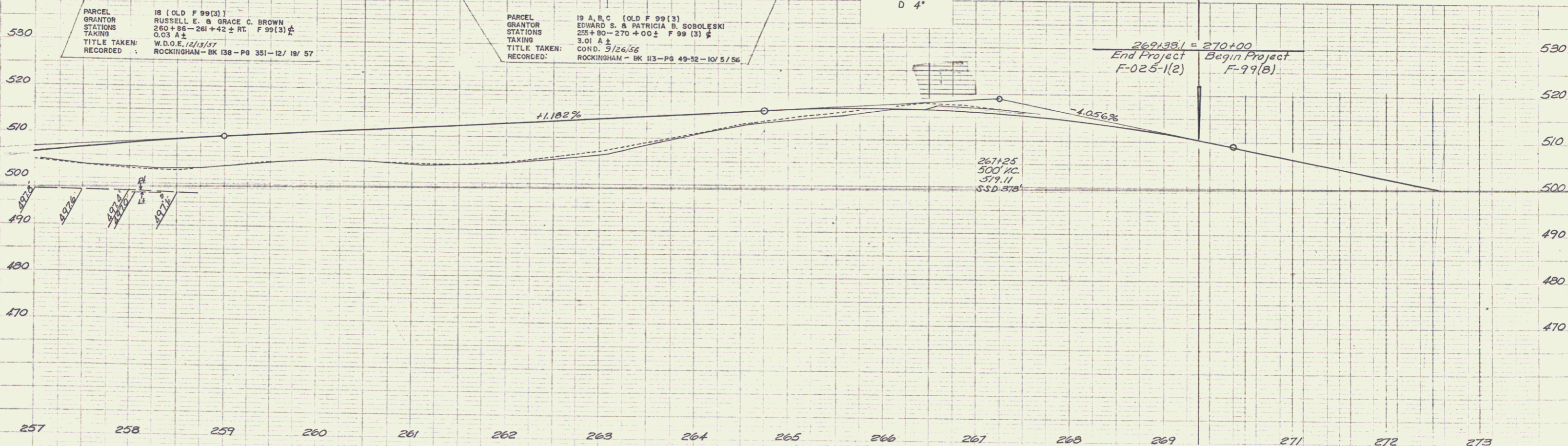
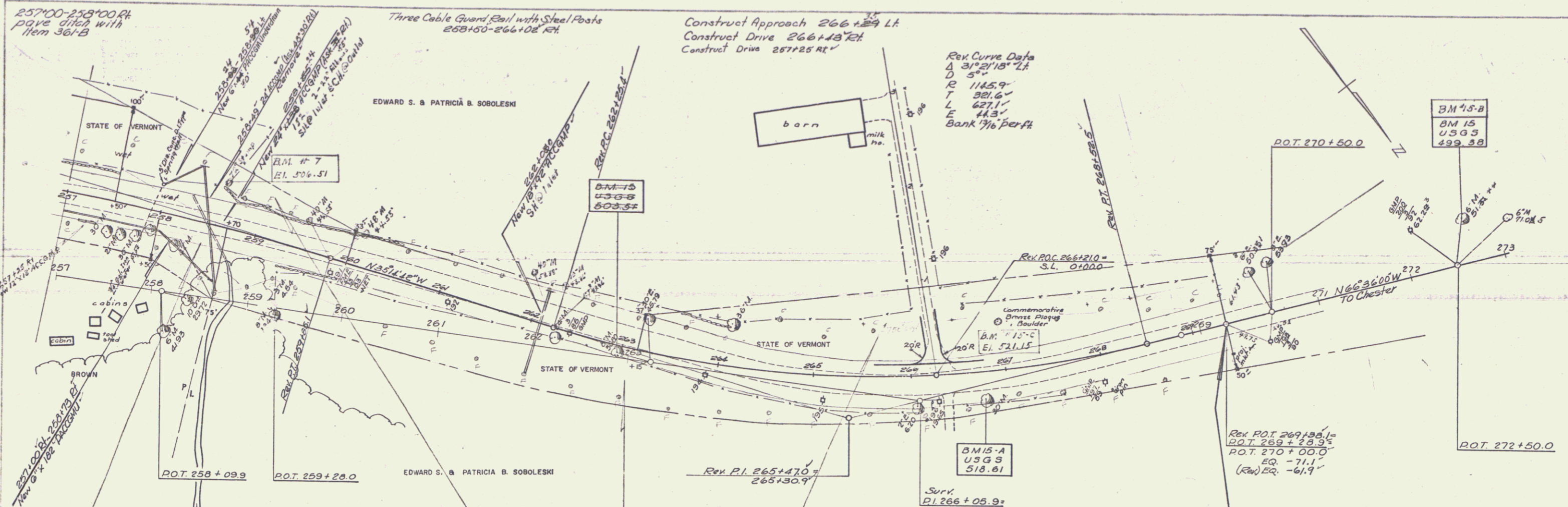
APPROVED _____ DATE _____ SECONDARY ENGINEER	APPROVED <i>E.H. O'Keefe</i> DATE _____ CONSTRUCTION ENGINEER	APPROVED _____ DATE _____ BRIDGE ENGINEER	APPROVED <i>J.S. Chan</i> DATE 10/27/60 DISTRICT ENGINEER	APPROVED <i>G.M. P.</i> DATE 10/25/60 PROJECT ENGINEER	APPROVED <i>A.S. B.</i> DATE 10-25-60 SUPERVISOR
--	---	---	---	--	--

DATE	BY	REVISION
3-30-60	W. J.
3-30-60	W. J.
3-30-60	W. J.



B.M. No. A S.I.R. 6" Bass. 20' Rr. Sta. 2110 Elev. 349.91
 B.M. No. B S.I.R. 12" Maple 33' Rr. Sta. 1910 Elev. 353.76
 B.M. No. D S.I.R. 12" Y.B. 80' Lr. Sta. 15+25 Elev. 353.17
 B.M. No. F S.I.R. 18" Elm 300' Lr. Sta. 242+75 Box 371.79

ROCKINGHAM
 F 025-1(2)
 Sheet 19 of 78
 Side Line @ M.L. Sta. 243+53.9



B.M. No. 15-C Bronze Mark - 52" U. Sta. 267+0 Elev. 521.15

B.M. No. 15-B S.T. 6" Maple 50" U. Sta. 272+50 Elev. 499.38

B.M. No. 7 S.T. 72" Maple Stamp 45" U. Sta. 258+58 Elev. 506.51

273
ROCKINGHAM
F 025-1 (2)
Sheet 14 of 78