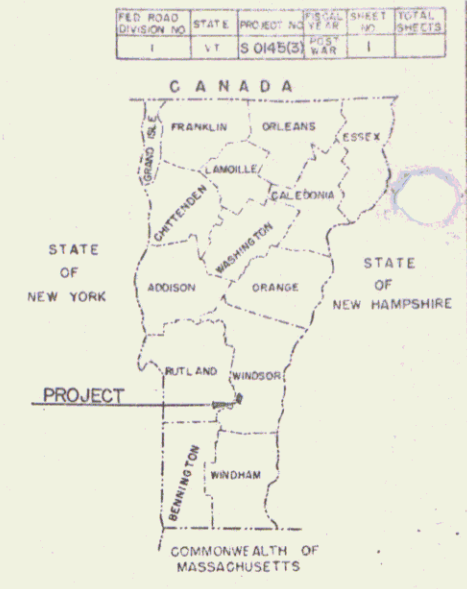
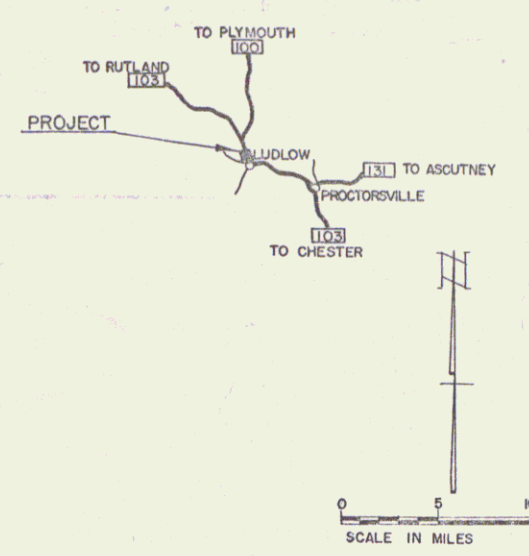


INDEX OF SHEETS

Sheet No.	Title Page
1	Typical Cross Section of Improvement
2	Item Quantity Sheet
3	Drainage Quantity Sheet
4	Earthwork Sheets
5-6	Plan & Profile Sheets
7-10	ROW DETAIL SHEET
11	A-1 Drilling & Blasting of Solid Rock Subgrade, Mod.
12	B-1 Banking Tables
13	D-5 Typical Slope Grading
14	Blank
15	D-2 Drainage
16	D-4 Flushing Basins
17	D-6 Reinforced Concrete Drop Inlet
18	E-1 Barricades, Signs & Lights
19	E-3 Federal Aid Construction Identification Signs
20	G-3 Three Cable Guard Rail w/Steel Posts
21	G-5 Steel Marker Posts and Flank Guard Rail
22	J-1 Project & Boundary Markers
23	Blank
24	Gross Sections
25-40	DRAINAGE SHEETS (REC. PLANS)

STATE OF VERMONT  
DEPARTMENT OF HIGHWAYS  
PROPOSED IMPROVEMENT

TOWN OF LUDLOW  
COUNTY OF WINDSOR  
VERMONT ROUTE 103  
RUTLAND-LUDLOW ROAD



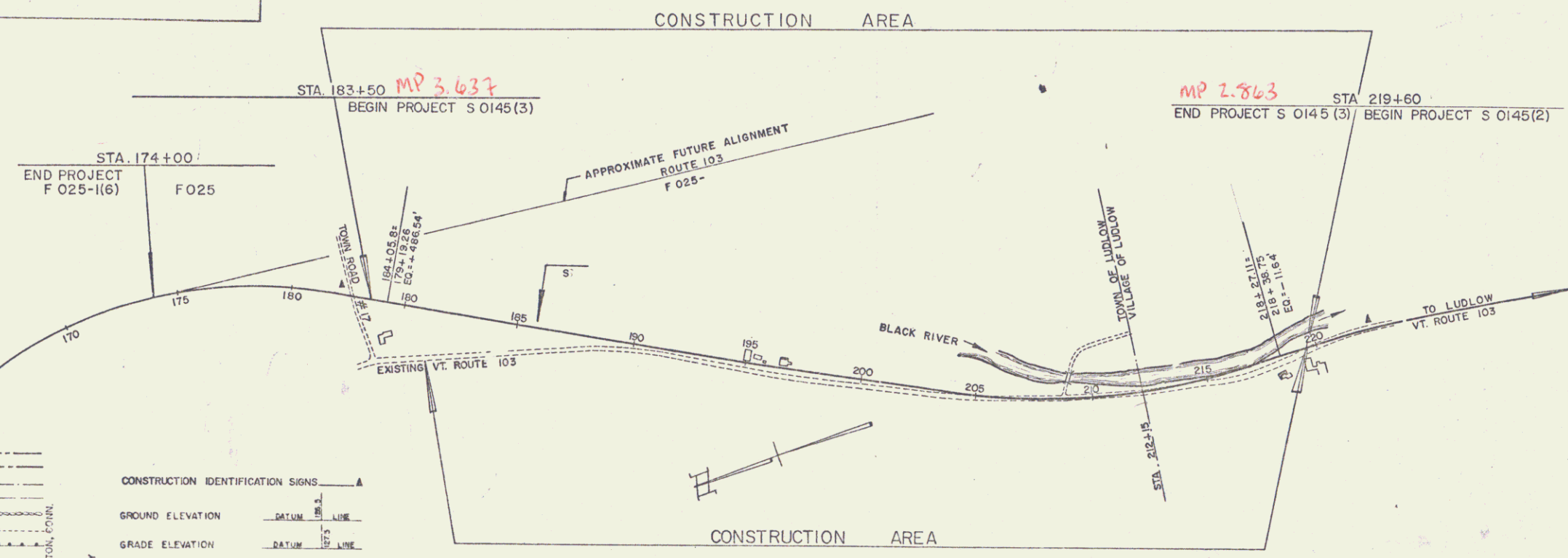
NAME, NUMBER, TYPE, & PAVEMENT AREA  
LUDLOW S 0145 (3) BIT. CONC. 11,000 SQ. YD.  
REC. PLANS  
MATERIALS:  
SUB BASE OF GRAVEL-PIERCE PIT & LAMPERT PIT LUDLOW, VERMONT  
SUB BASE OF SAND-LAMPERT PIT LUDLOW, VERMONT  
CUT BACK ASPHALT-TORRINGTON, HUMBLE OIL CO. BOSTON, MASS.  
BIT. CONC.-FRANK W. WHITCOMB M. WALDPOLE, NEW HAMPSHIRE  
METAL CULVERT PIPE-NEW ENGLAND METAL CULVERT CORR WHITE RIVER JCT., VT.  
REINFORCED CONC. PIPE, THREE CABLE GUARD RAIL, STEEL MARKER POSTS,  
BOUNDARY MARKERS & PRE-CAST RCI- ST. GRISHOLD & CO. INC. WILLISTON, VT.  
CONTRACTOR: S. V. ROSSI, TORRINGTON, CONN.  
RES. ENG. R. W. BUTLER, ASST. M. SANDERSON  
INSPECTORS: H. DUKE, J. ST. PETER  
REC. PLANS: SPENCER H. WHITNEY  
CONTRACT:

BEGINNING AT A POINT 0.634 MILE NORTHERLY OF THE  
LUDLOW TOWN-LUDLOW VILLAGE LINE AND EXTENDING  
SOUTHERLY 0.773 MILE.

LENGTH OF PROJECT 4084.90 FEET = 0.773 MILE

ADT 1960	2870
ADT 1985	2050
DHV 1985	320
D	65%
T	5%
V	50 M.P.H.

LUDLOW  
PROJECT S 0145 (3)  
TYPE BITUMINOUS CONCRETE  
CONTRACTOR S.V. ROSSI CONSTRUCTION CO., INC.  
TORRINGTON, CONN.  
LOCATION Ludlow Village Line and extending southerly 0.773 miles  
3840 Box 246

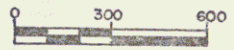


CONVENTIONAL SIGNS

ROADWAY	---
COUNTY LINE	---
TOWN LINE	---
FENCE LINE	---
STONE WALL	---
UNFENCED PROPERTY	---
GUARD RAIL	---
TRAVELED WAY	---
RAILROAD	---
RETAINING WALL	---
CENTER LINE	---
SURVEY LINE	---
CULVERT	---
DROP INLET	---
TROLLEY POLE	---
POWER POLE	---
TELEPHONE POLE	---
TREES	---
HEDGE	---

CONSTRUCTION IDENTIFICATION SIGNS

GROUND ELEVATION	DATUM	---
GRADE ELEVATION	DATUM	---
CURVE DATA	---	---
DEFLECTION OF ANGLE	Δ	---
DEGREE OF CURVE	D	---
RADIUS OF CURVE	R	---
TANGENT DISTANCE	T	---
LENGTH OF CURVE	L	---
EXTERNAL DISTANCE	E	---
POINT OF INTERSECTION	P.I.	---
POINT OF CURVE	P.C.	---
POINT OF TANGENT	P.T.	---
POINT ON TANGENT	P.O.T.	---
POINT ON SUB-TANGENT	P.O.S.T.	---



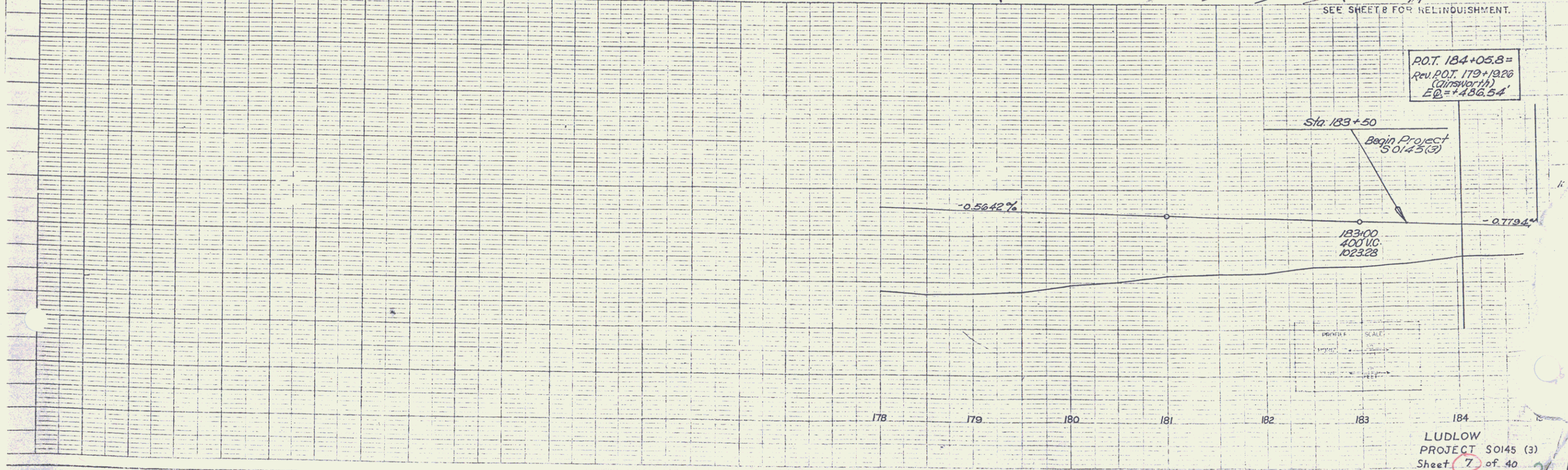
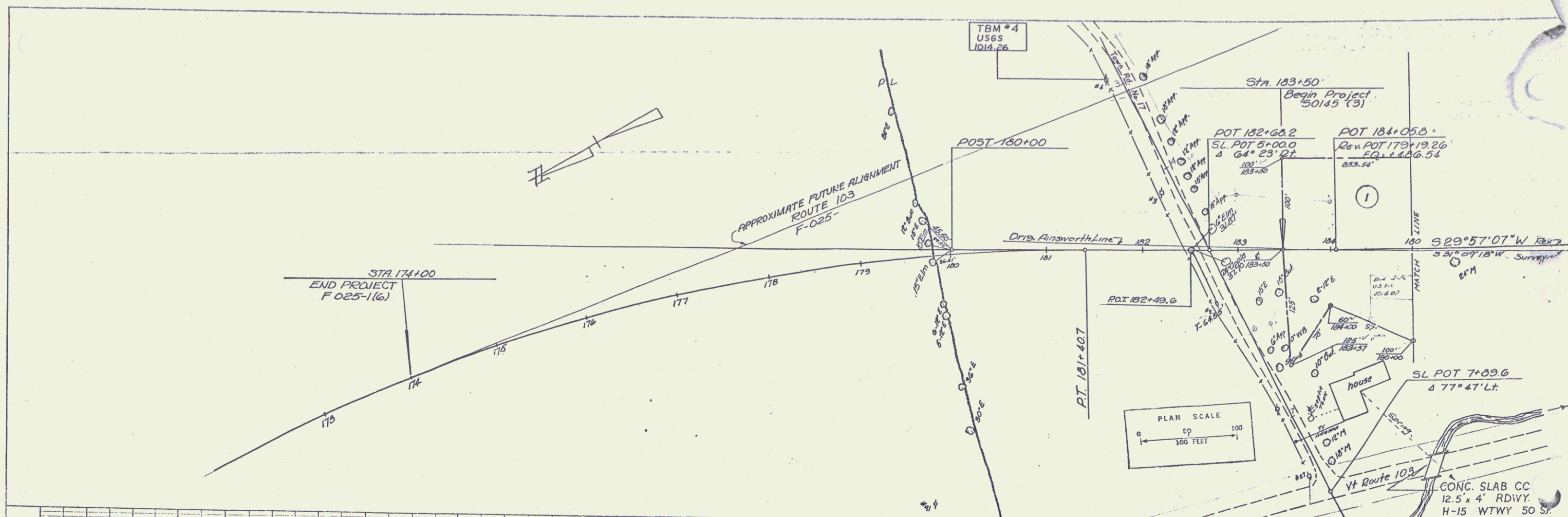
APPROVED: <i>[Signature]</i> ASST. CHIEF ENGINEER DATE 7/5/63	APPROVED: <i>[Signature]</i> SECONDARY ENGINEER DATE 6/25/63	APPROVED: <i>[Signature]</i> CONSTRUCTION ENGINEER DATE 6/27/63	APPROVED: _____ BRIDGE ENGINEER DATE _____	APPROVED: <i>[Signature]</i> DISTRICT ENGINEER DATE 7/1/63	APPROVED: <i>[Signature]</i> HIGHWAY ENGINEER DATE 6/25/63	APPROVED: <i>[Signature]</i> CHIEF ENGINEER DATE June 26, 1963
---	--	---	--	--	--	--

DEPARTMENT OF COMMERCE  
BUREAU OF PUBLIC ROADS

APPROVED: \_\_\_\_\_  
DISTRICT ENGINEER

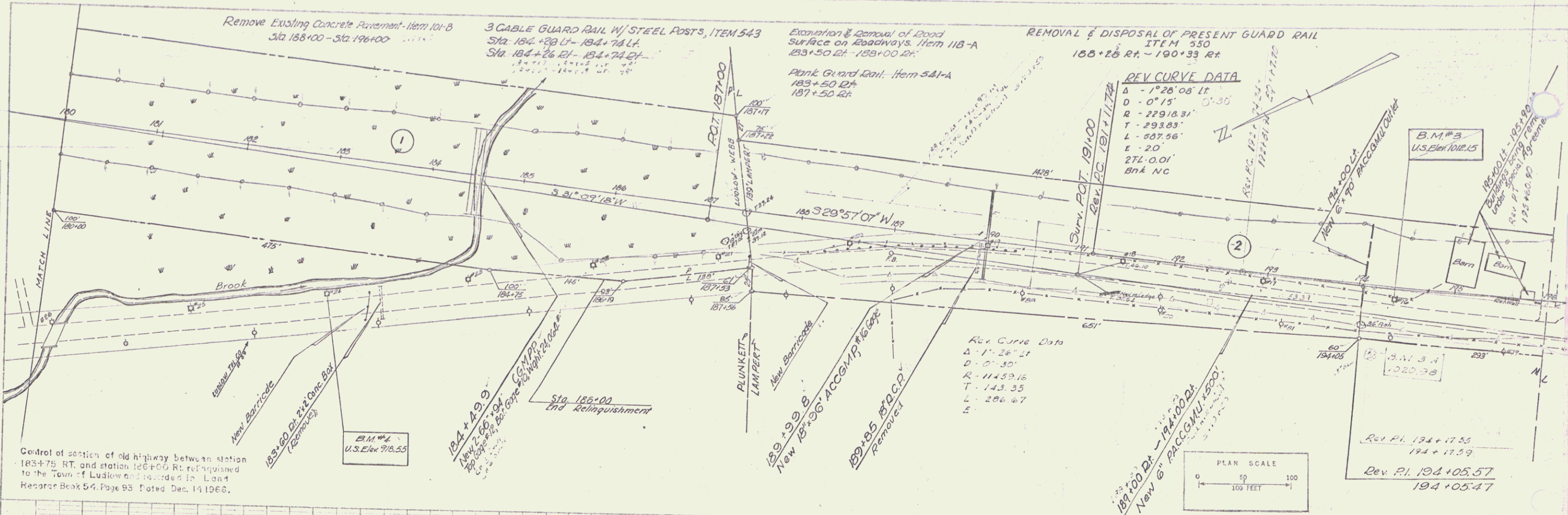
PROJECT S NO. 0145(3)  
SHEET 1 OF 40 SHEETS

Pin # 00R142  
Date 7/5/1963

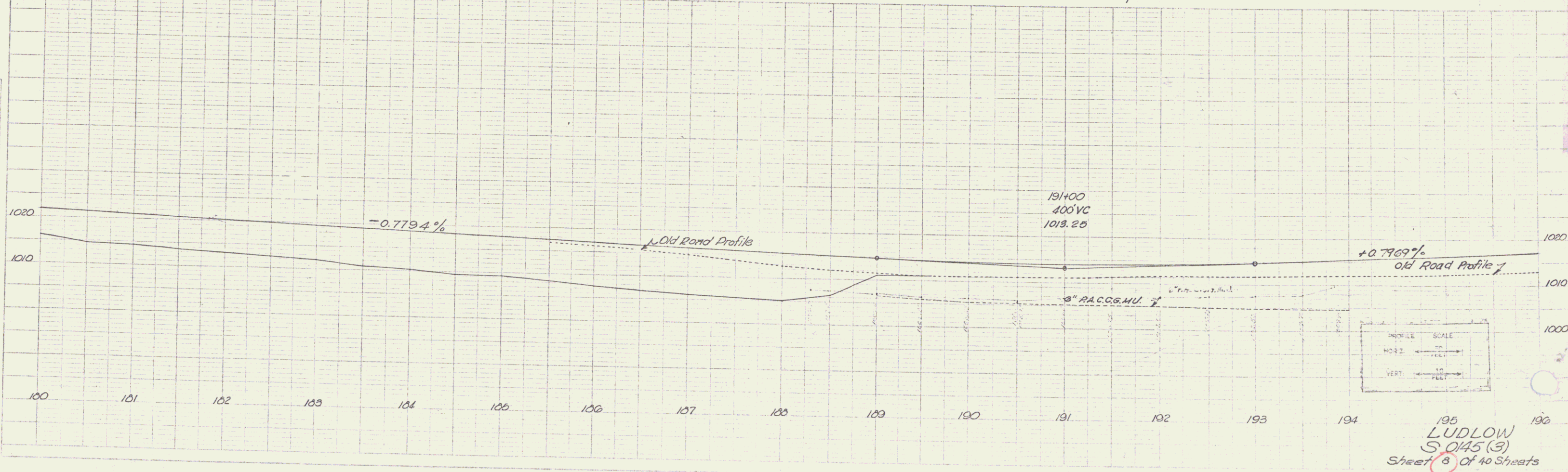


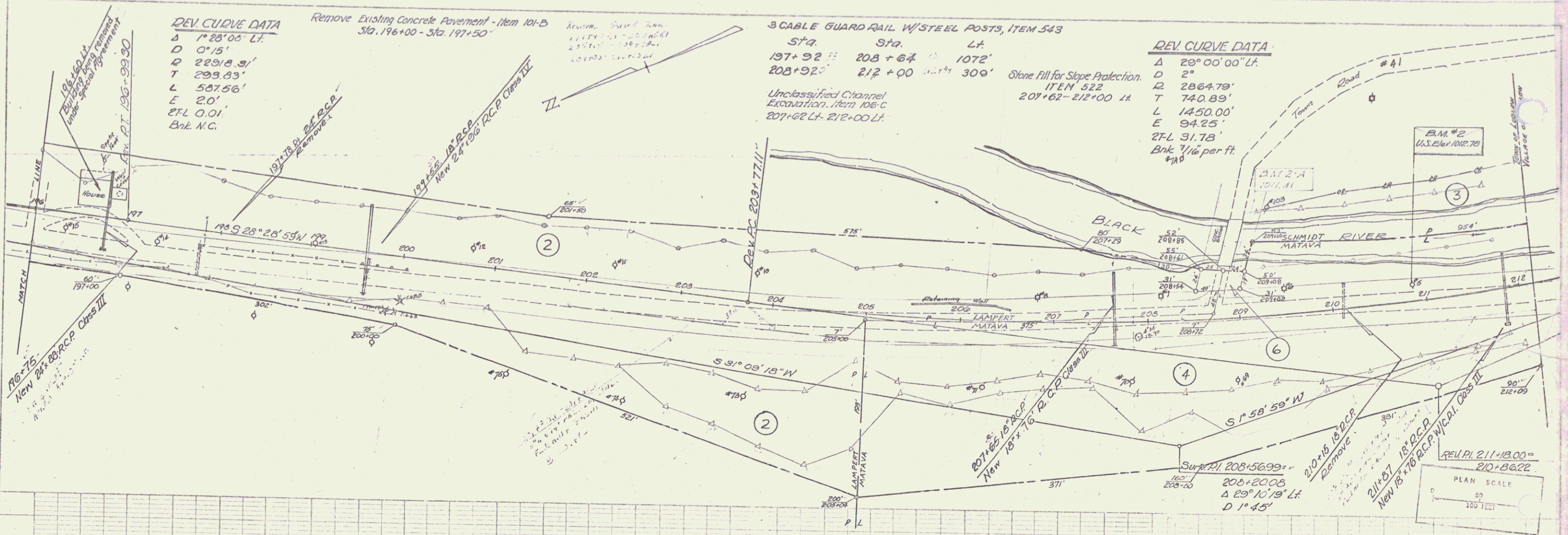
P.O.T. 184+05.8 =  
 Rev. P.O.T. 179+19.26  
 (CUTTSBORO)  
 E.C. = 1436.54

PLAN  
 DATE  
 DRAWN BY  
 CHECKED BY  
 APPROVED BY



Control of section of old highway between station 185+75 RT, and station 126+00 RT, explained to the Town of Ludlow and recorded in Land Record Book 54, Page 93, Dated Dec. 14 1966.



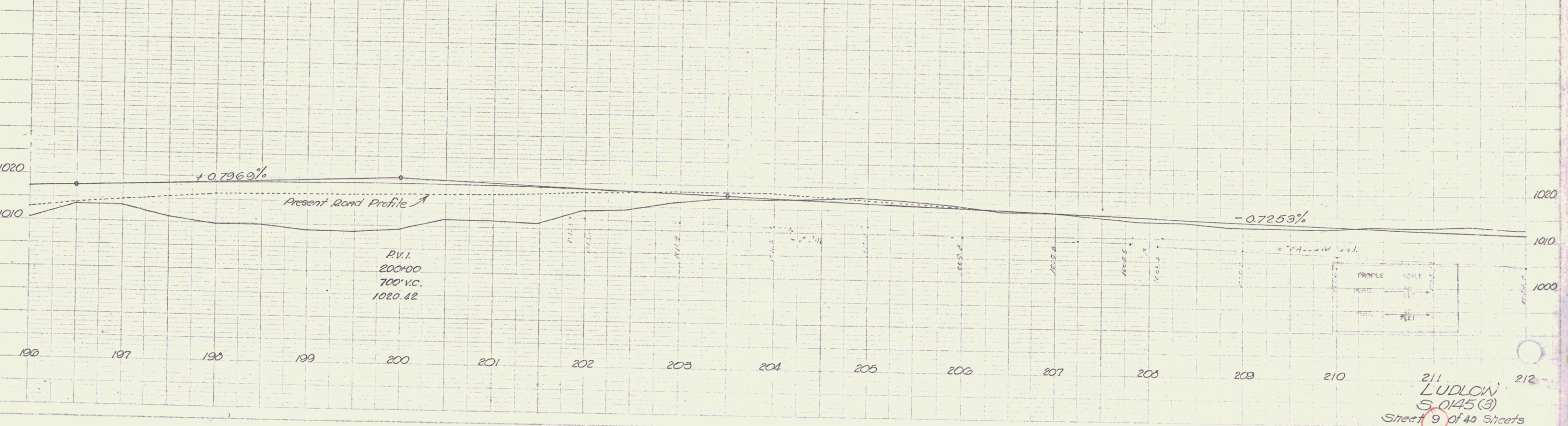


DEV CURVE DATA  
 $\Delta$  1° 28' 00" LT  
 D 0' 15"  
 R 22918.31'  
 T 299.83'  
 L 587.56'  
 E 20'  
 EFL 0.01'  
 Bnk. N.C.

Remove Existing Concrete Pavement - Item 101-B  
 Sta. 196+00 - Sta. 197+50

3 CABLE GUARD RAIL W/ STEEL POSTS, ITEM 543  
 Sta. Sta. Lt.  
 197+92 208+64 1072'  
 208+92 212+00 308'

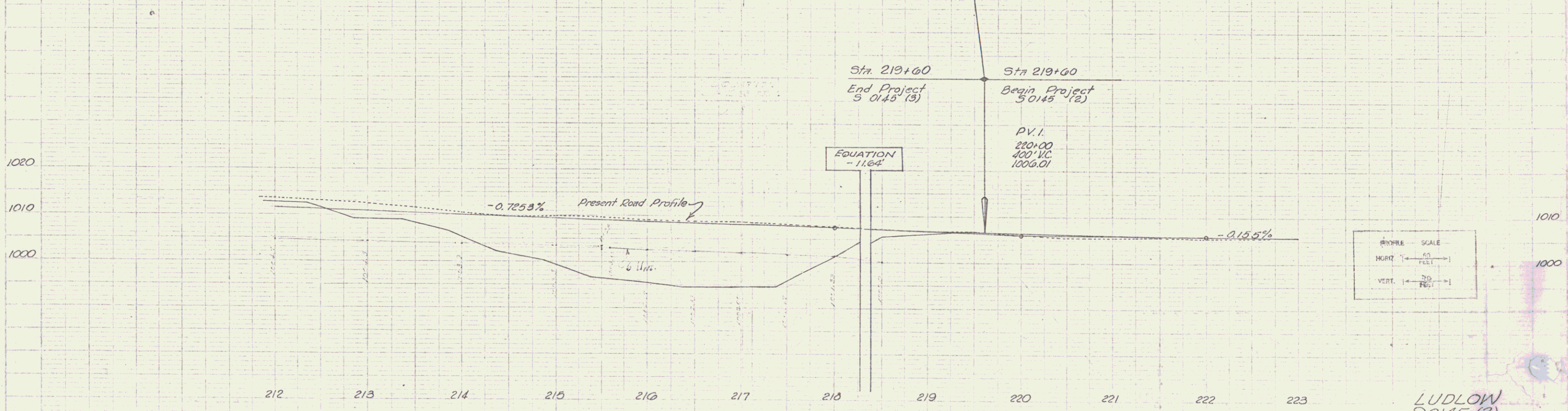
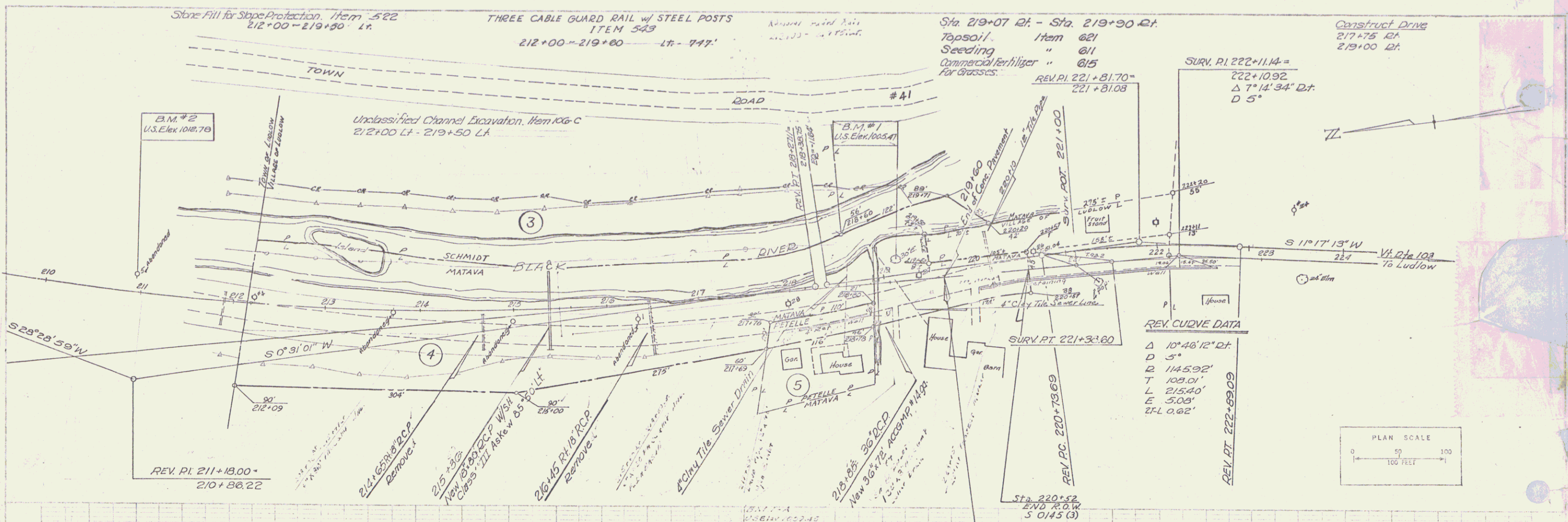
DEV CURVE DATA  
 $\Delta$  29° 00' 00" LT  
 D 2°  
 R 2864.79'  
 T 740.89'  
 L 1450.00'  
 E 94.25'  
 EFL 31.78'  
 Bnk 7 1/2 per ft



R.V.I.  
 200+00  
 700' V.C.  
 1020.42

211  
 LUDLOW  
 S. 0145 (3)  
 Sheet 9 of 40 Sheets

4



LUDLOW  
50145 (3)  
Sheet 10 of 40 Sheets  
5